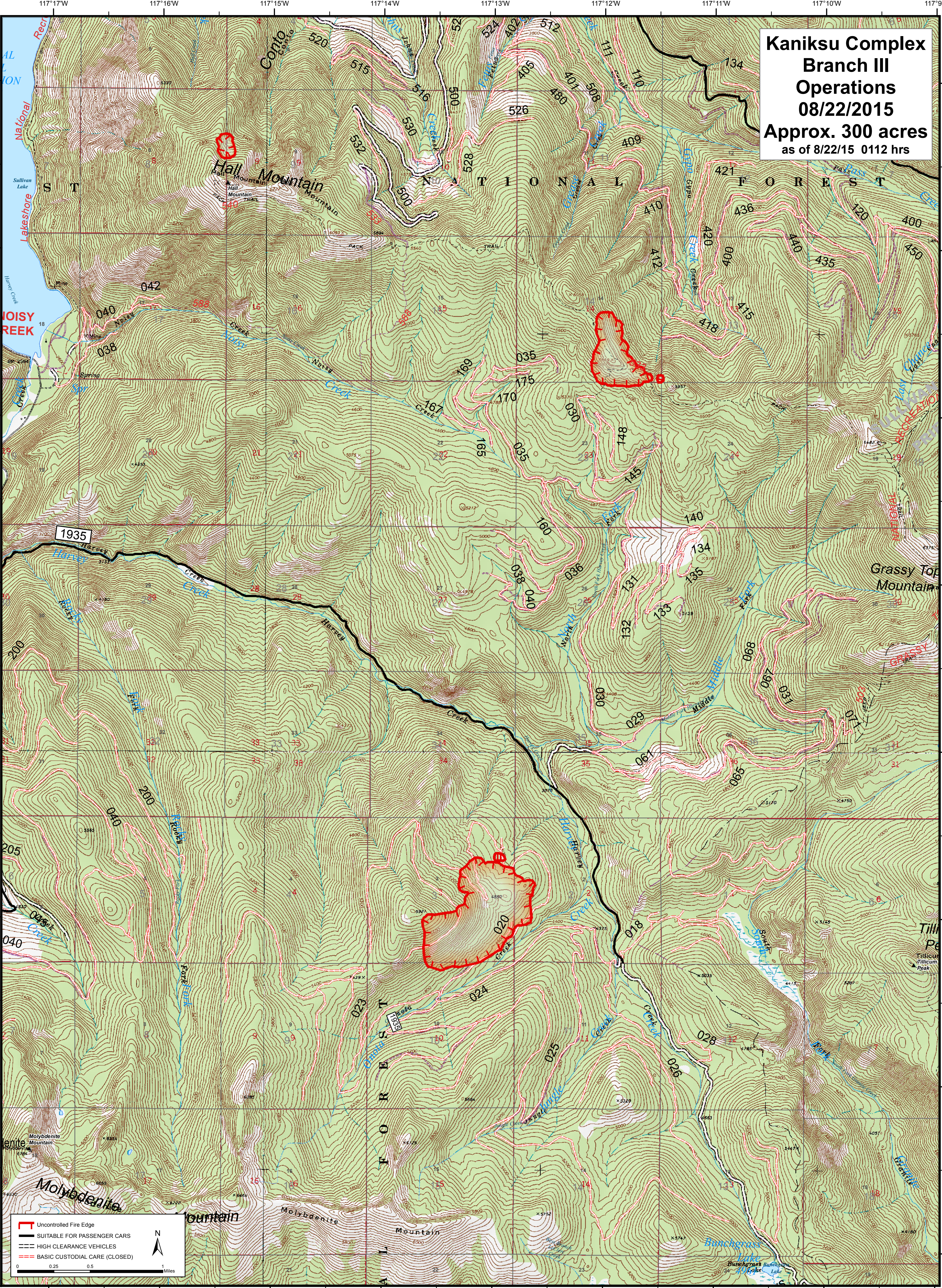


**Kaniksu Complex
Branch III
Operations
08/22/2015
Approx. 300 acres
as of 8/22/15 0112 hrs**



Legend:

- Uncontrolled Fire Edge
- SUITABLE FOR PASSENGER CARS
- HIGH CLEARANCE VEHICLES
- BASIC CUSTODIAL CARE (CLOSED)

Scale: 0, 0.25, 0.5 Miles

North Arrow