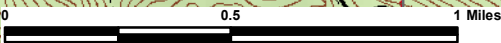


117°6'W

117°5'W

117°4'W

117°3'W



Page # 1

48°34'N

48°34'N

48°33'N

48°33'N

48°32'N

48°32'N

48°31'N

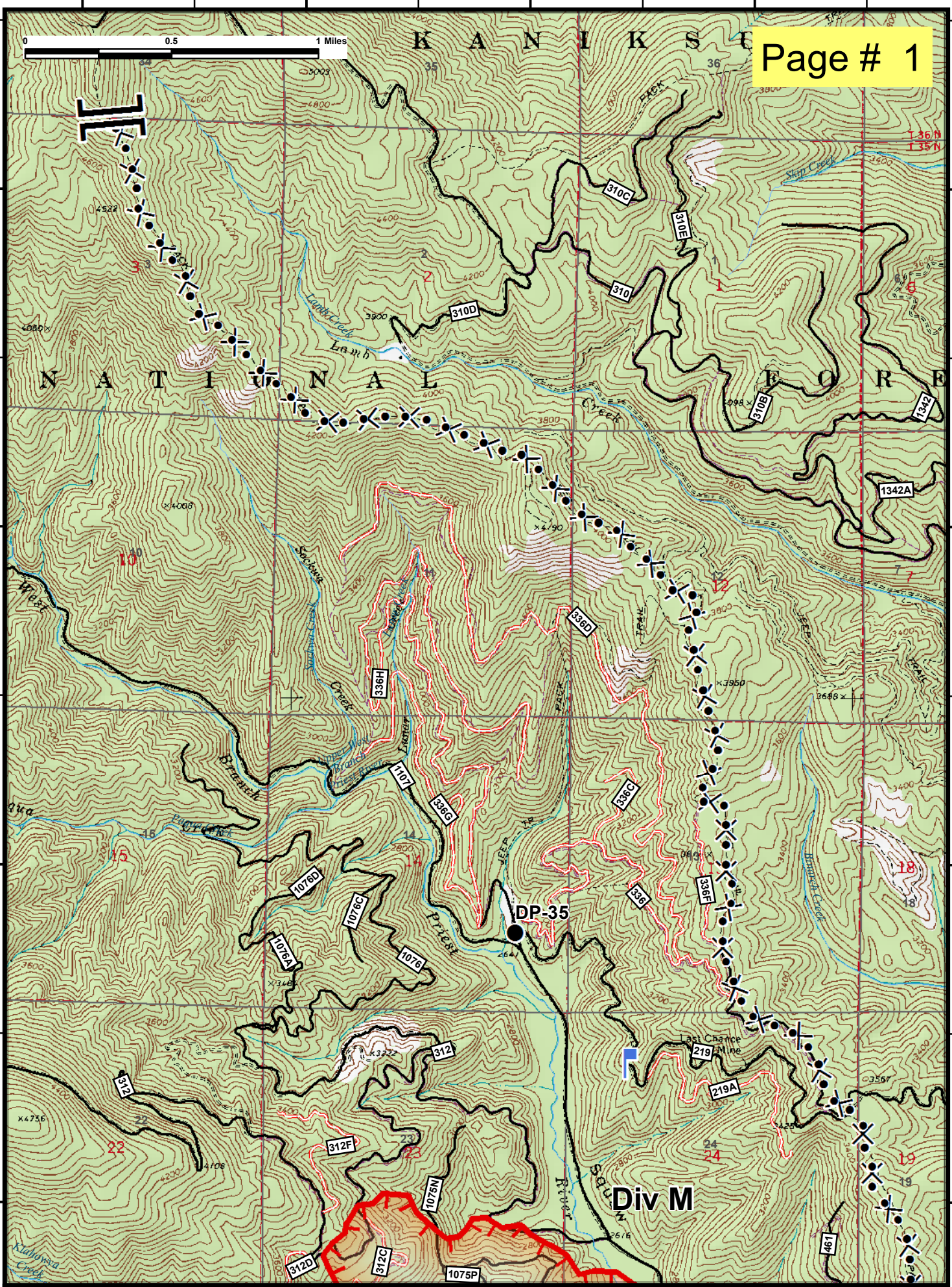
48°31'N

K A N I K S E E

N A T I O N A L F O R E

DP-35

Div M



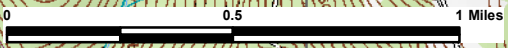
117°10'W

117°9'W

117°8'W

117°7'W

117°6'W



WX

Div B

48°31'N

48°31'N

48°30'N

48°30'N

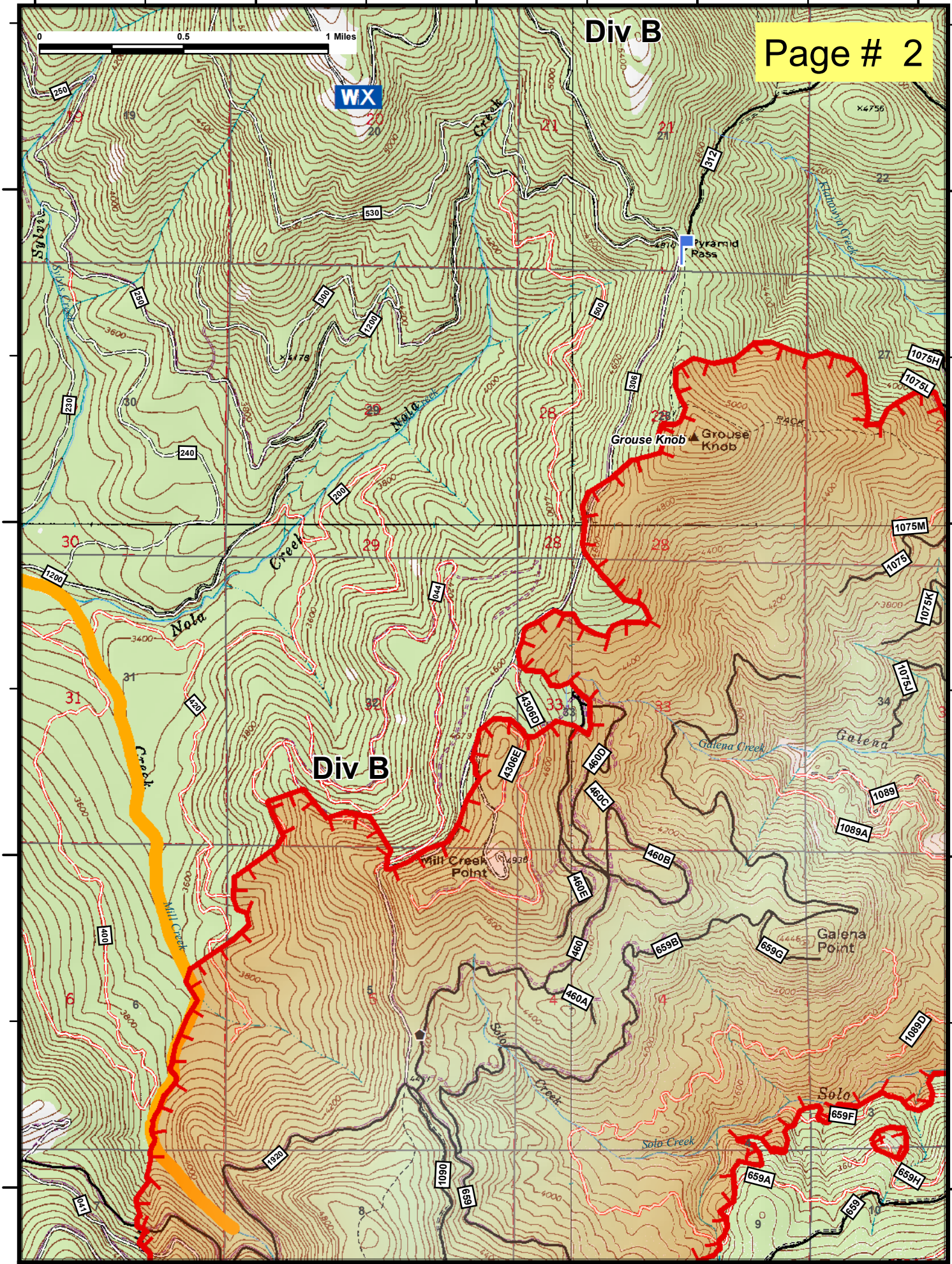
48°29'N

48°29'N

48°28'N

48°28'N

Div B



117°10'W

117°9'W

117°8'W

117°7'W

117°6'W

117°6'W

117°5'W

117°4'W

117°3'W

Div M

Squaw Valley

DP-25

48°31'N

48°31'N

48°30'N

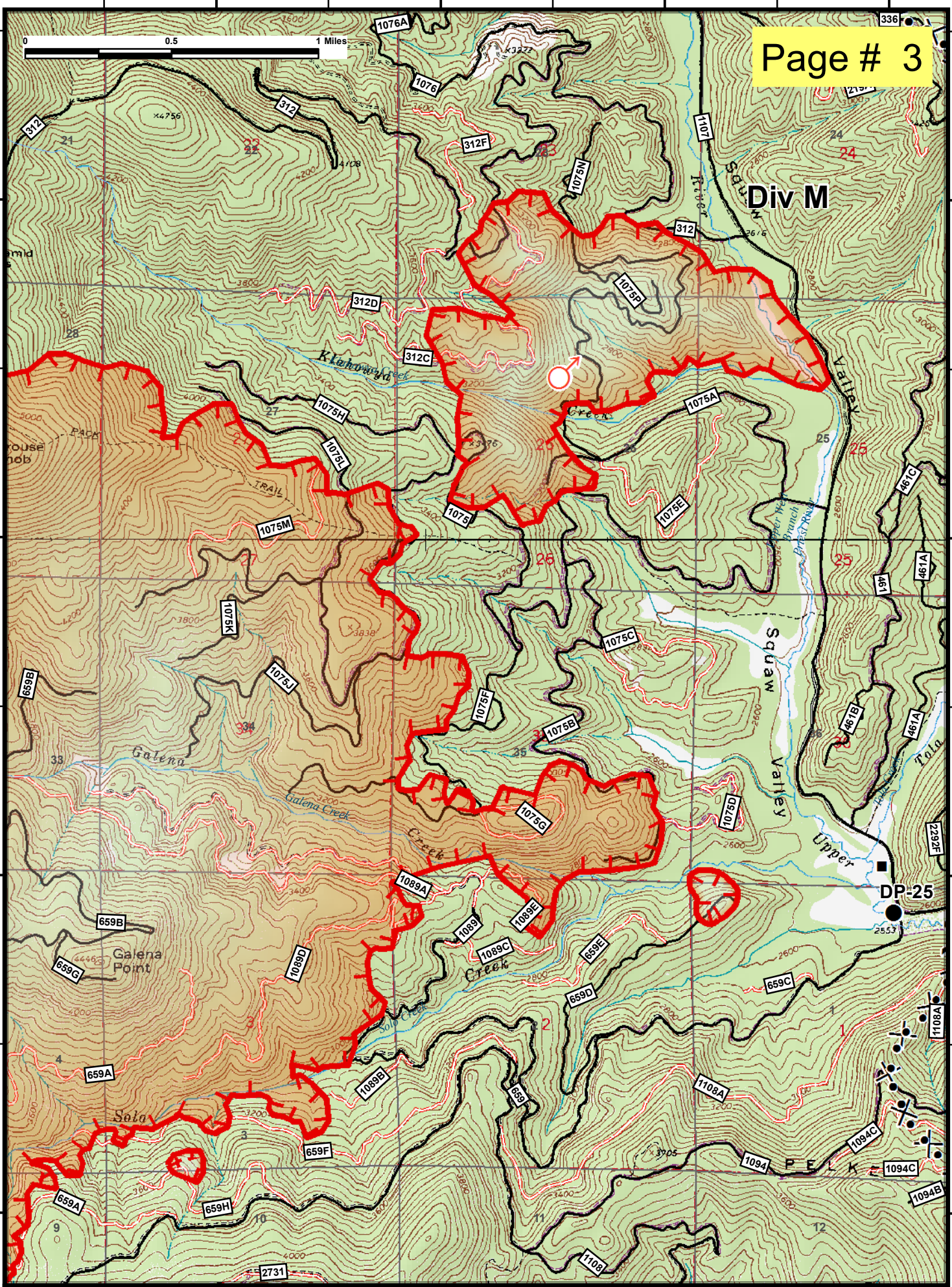
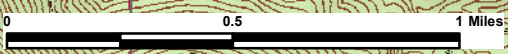
48°30'N

48°29'N

48°29'N

48°28'N

48°28'N

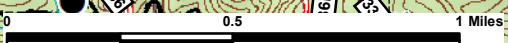


117°4'W

117°3'W

117°2'W

117°1'W



48°31'N

48°31'N

48°30'N

48°30'N

48°29'N

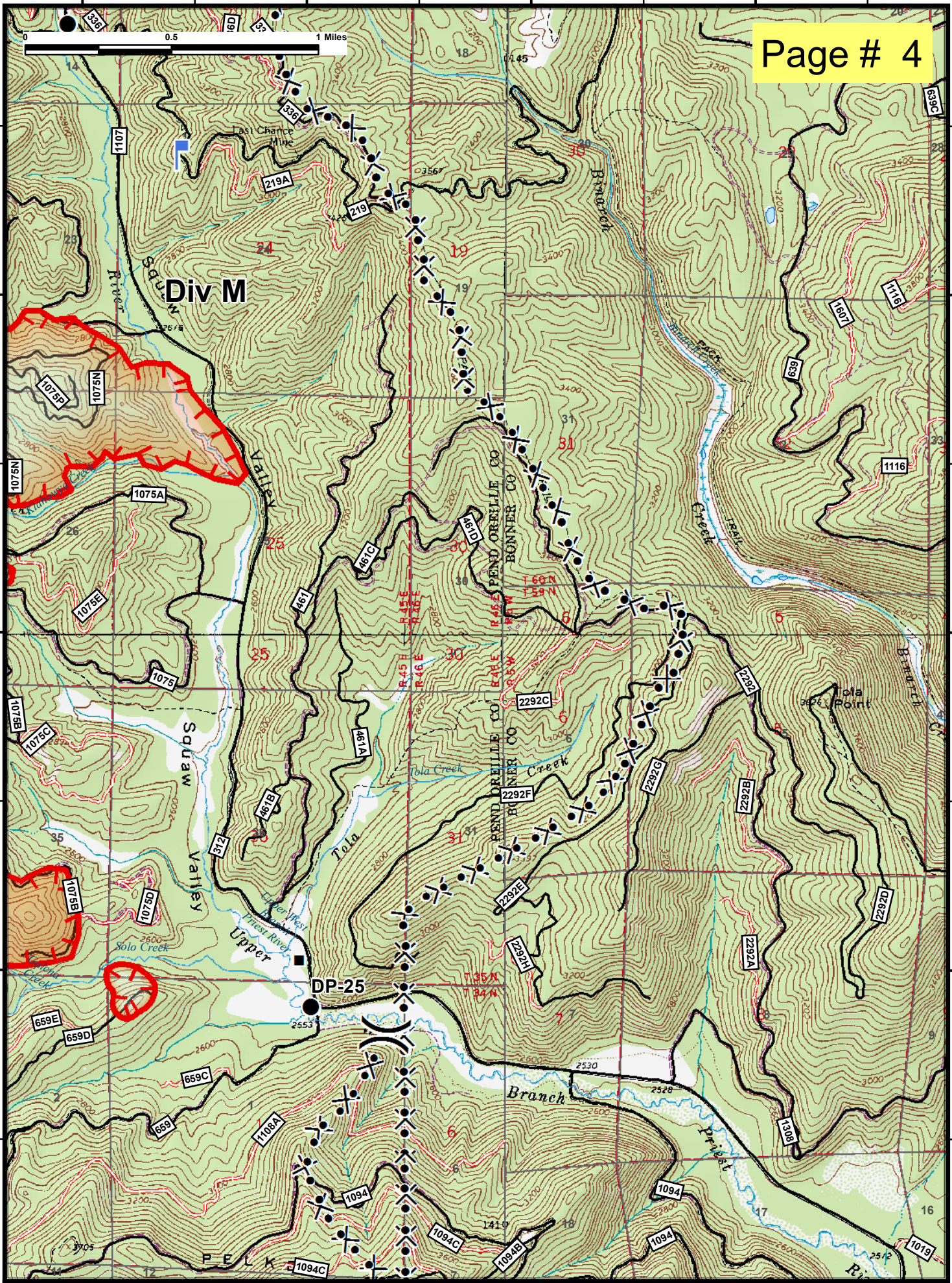
48°29'N

117°4'W

117°3'W

117°2'W

117°1'W



Div M

Squaw Valley

Tola Creek

Upper River

DP-25

Branch

1094

1094

1094

1107

1075A

1075E

1075

1075B

1075D

659E

659D

659C

659

1108A

1094

1094C

1094B

461C

461

461A

461B

461

2292E

2292D

2292C

2292F

2292A

2292B

2292G

1607

1116

1116

1116

1116

1116

1116

1116

1116

1116

1116

1116

1607

1116

1116

1116

1116

1116

1116

1116

1116

1116

1116

1116

1116

1116

1116

1116

1116

1116

1607

1116

1116

1116

1116

1116

1116

1116

1116

1116

1116

1116

1116

1116

1116

1116

1116

1116

1607

1116

1116

1116

1116

1116

1116

1116

1116

1116

1116

1116

1116

1116

1116

1116

1116

1116

1607

1116

1116

1116

1116

1116

1116

1116

1116

1116

1116

1116

1116

1116

1116

1116

1116

1116

Div M

Squaw Valley

Tola Creek

Upper River

DP-25

Branch

1094

1094

1094

1107

1075A

1075E

1075

1075B

1075D

659E

659D

659C

659

1108A

1094

1094C

1094B

461C

461

461A

461B

461

2292E

2292D

2292C

2292F

2292A

2292B

2292G

1607

1116

1116

1116

1116

1116

1116

1116

1116

1116

1116

1116

1607

1116

1116

1116

1116

1116

1116

1116

1116

1116

1116

1116

1116

1116

1116

1116

1116

1116

1607

1116

1116

1116

1116

1116

1116

1116

1116

1116

1116

1116

1116

1116

1116

1116

1116

1116

1607

1116

1116

1116

1116

1116

1116

1116

1116

1116

1116

1116

1116

1116

1116

1116

1116

1116

1607

1116

1116

1116

1116

1116

1116

1116

1116

1116

1116

1116

1116

1116

1116

1116

1116

1116

117°12'W

117°11'W

117°10'W

117°9'W



48°28'N

48°28'N

48°27'N

48°27'N

48°26'N

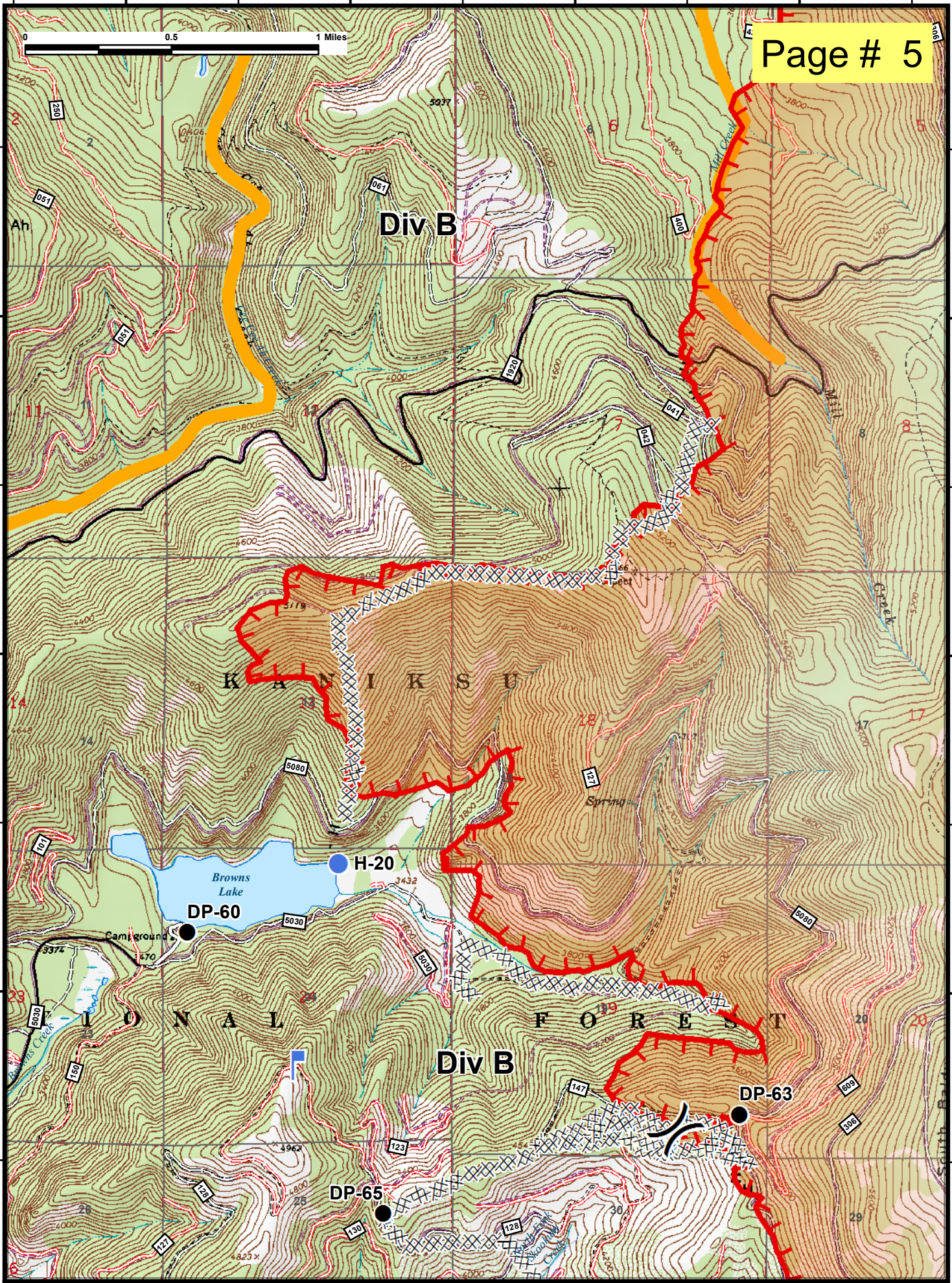
48°26'N

117°12'W

117°11'W

117°10'W

117°9'W



Div B

KANIKSUK

Div B

LONAL FOREST

Browns Lake

H-20

DP-60

DP-63

DP-65

Ah

Lon

Spring

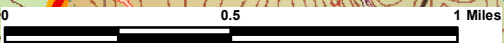
South

117°9'W

117°8'W

117°7'W

117°6'W



Page # 6

48°28'N

48°28'N

48°27'N

48°27'N

48°26'N

48°26'N

48°25'N

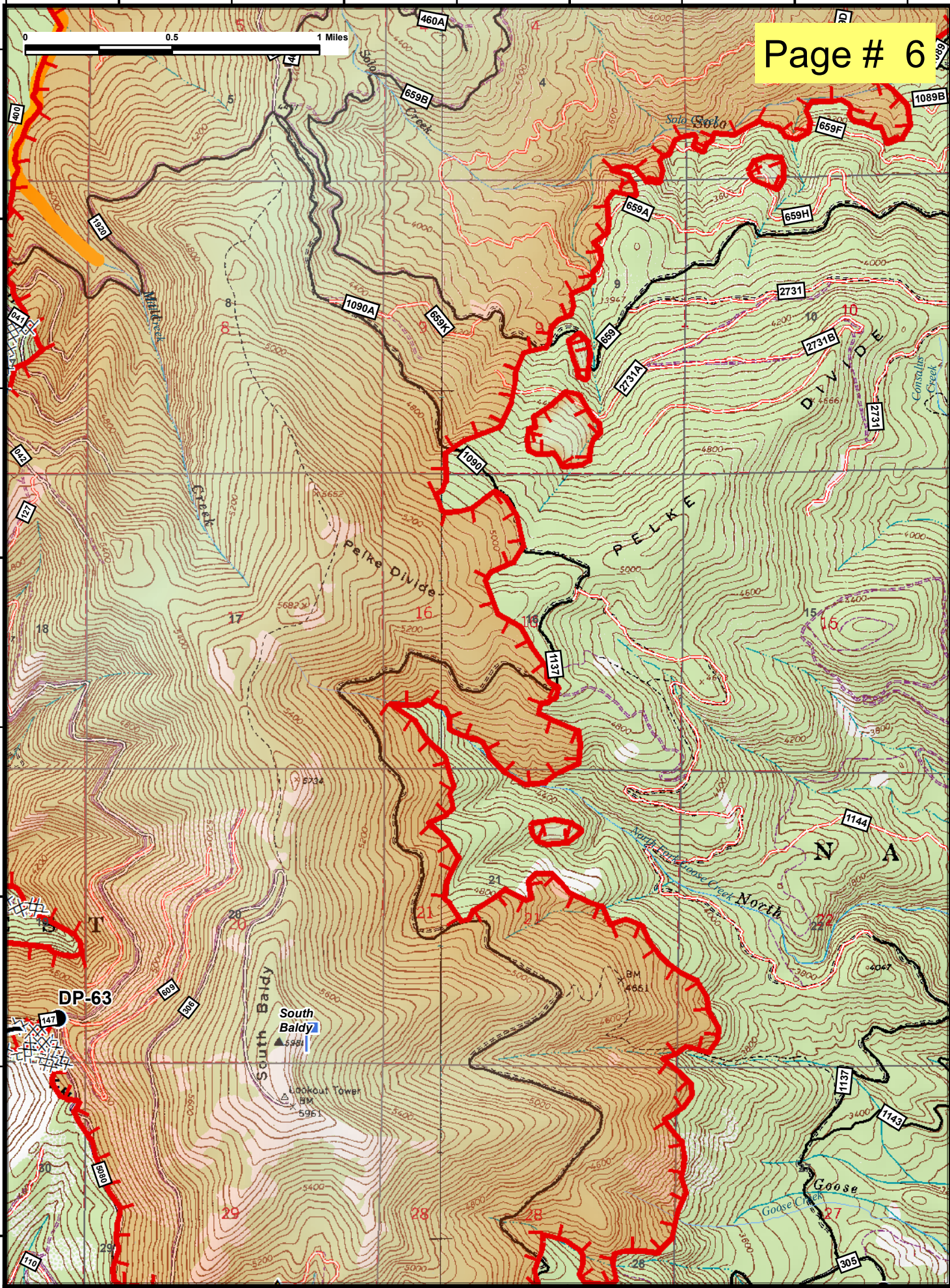
48°25'N

117°9'W

117°8'W

117°7'W

117°6'W

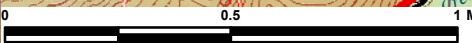


117°6'W

117°5'W

117°4'W

117°3'W



Page # 7

48°28'N

48°28'N

48°27'N

48°27'N

48°26'N

48°26'N

48°25'N

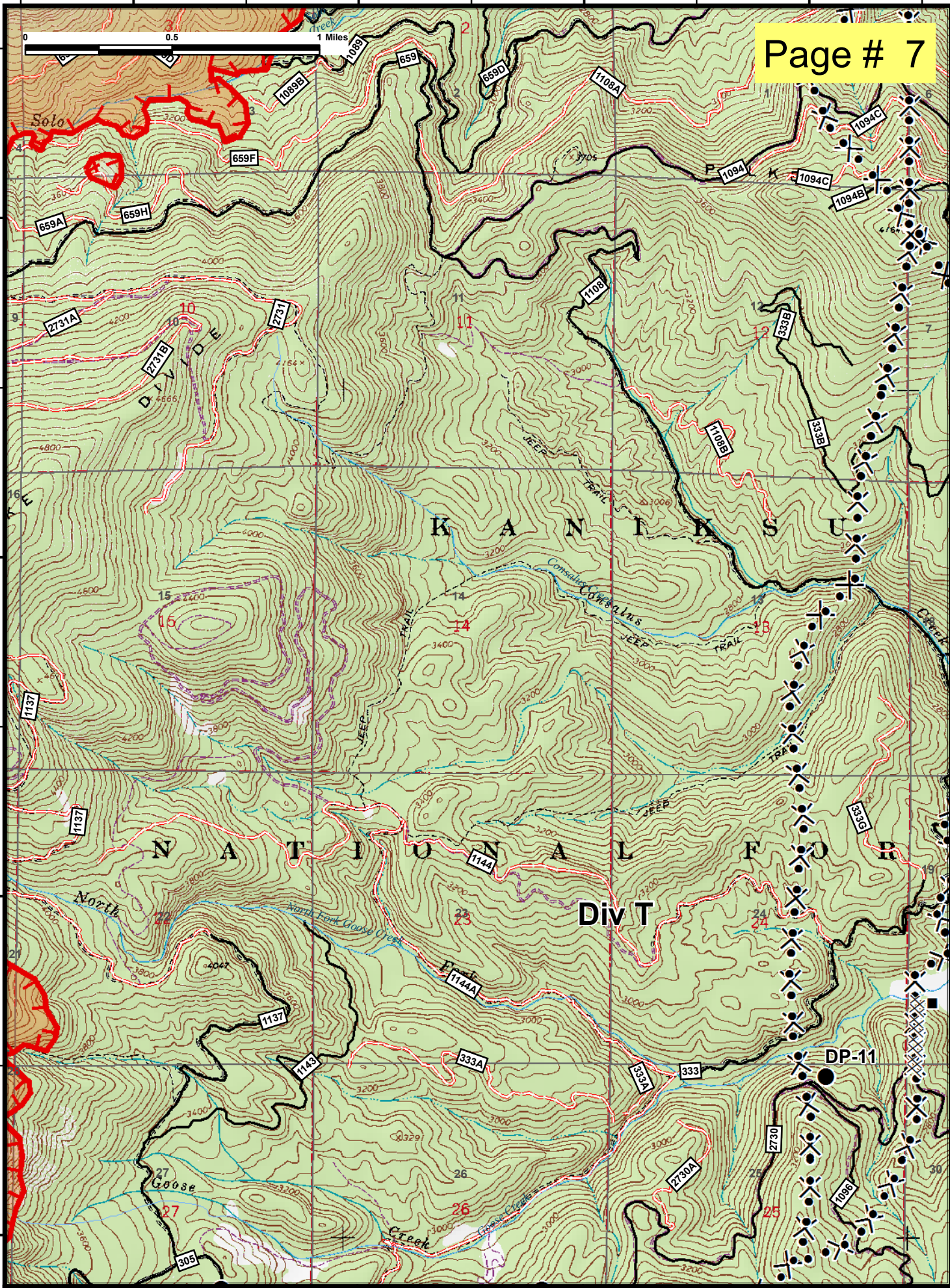
48°25'N

117°6'W

117°5'W

117°4'W

117°3'W



117°3'W

117°2'W

117°1'W

117°0'W

48°29'N

48°29'N

48°28'N

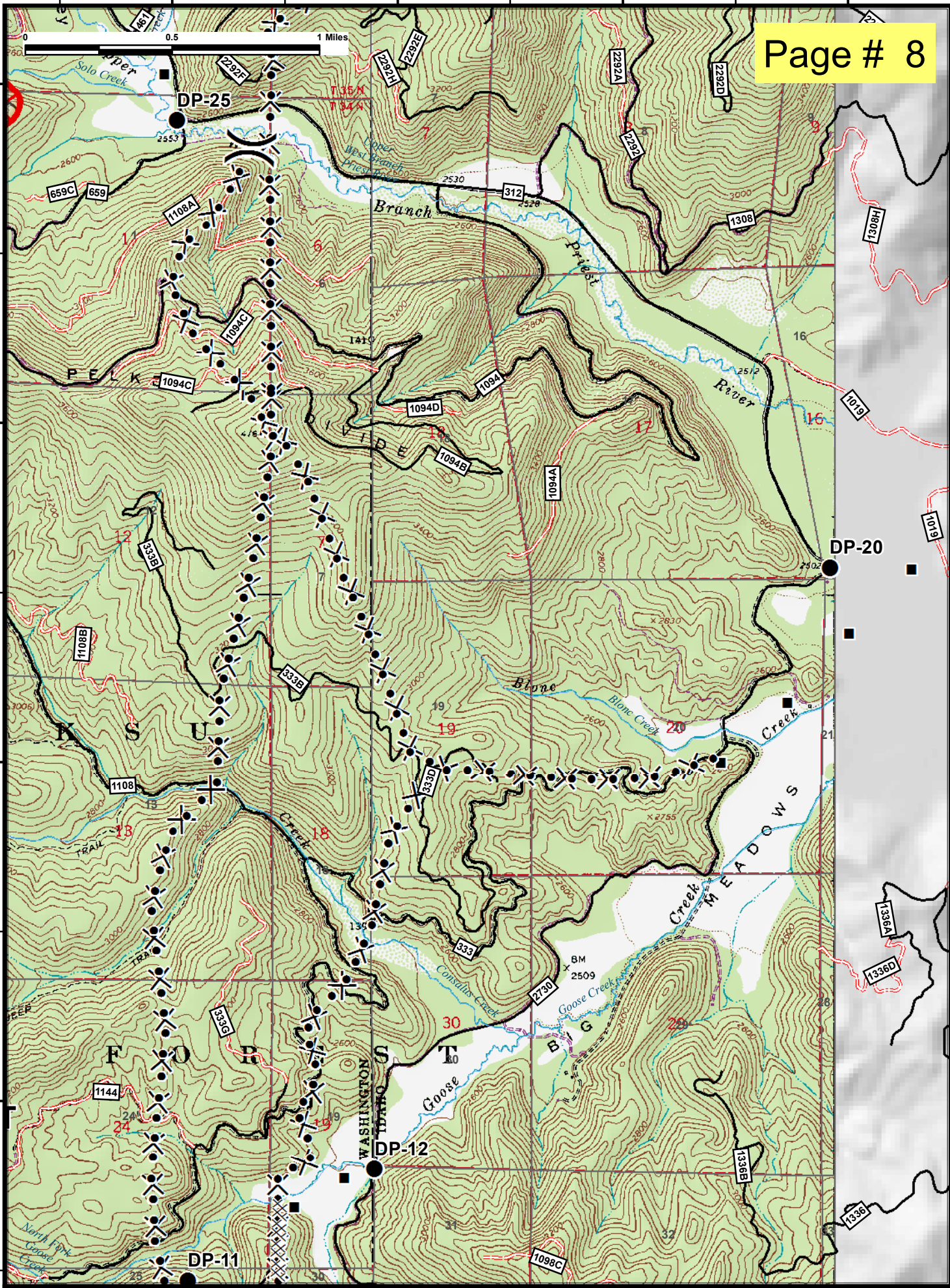
48°28'N

48°27'N

48°27'N

48°26'N

48°26'N



117°3'W

117°2'W

117°1'W

117°0'W





117°11'W

117°10'W

117°9'W

117°8'W

48°26'N

48°26'N

48°25'N

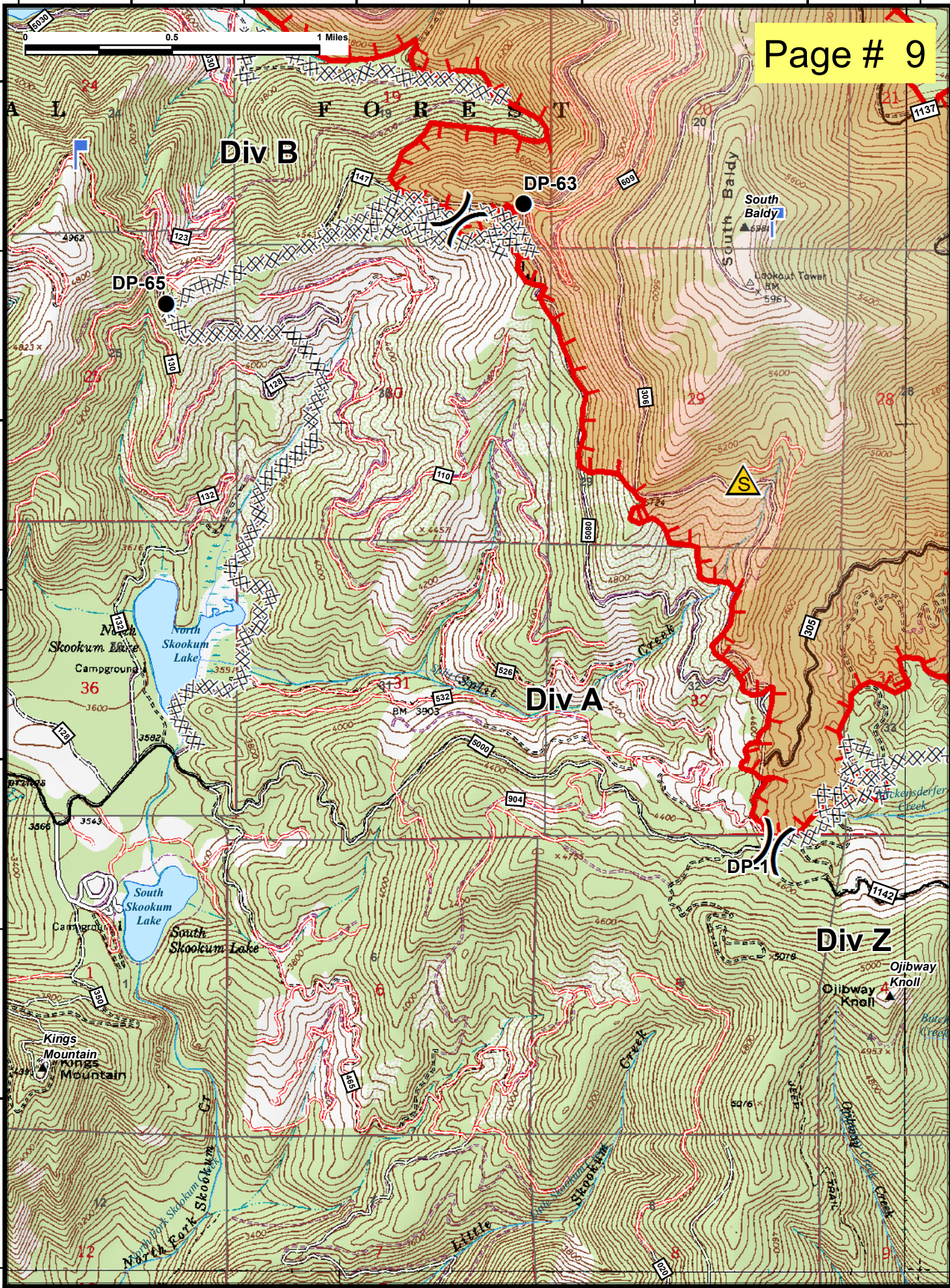
48°25'N

48°24'N

48°24'N

48°23'N

48°23'N



117°11'W

117°10'W

117°9'W

117°8'W

117°8'W

117°7'W

117°6'W

117°5'W

48°26'N

48°26'N

48°25'N

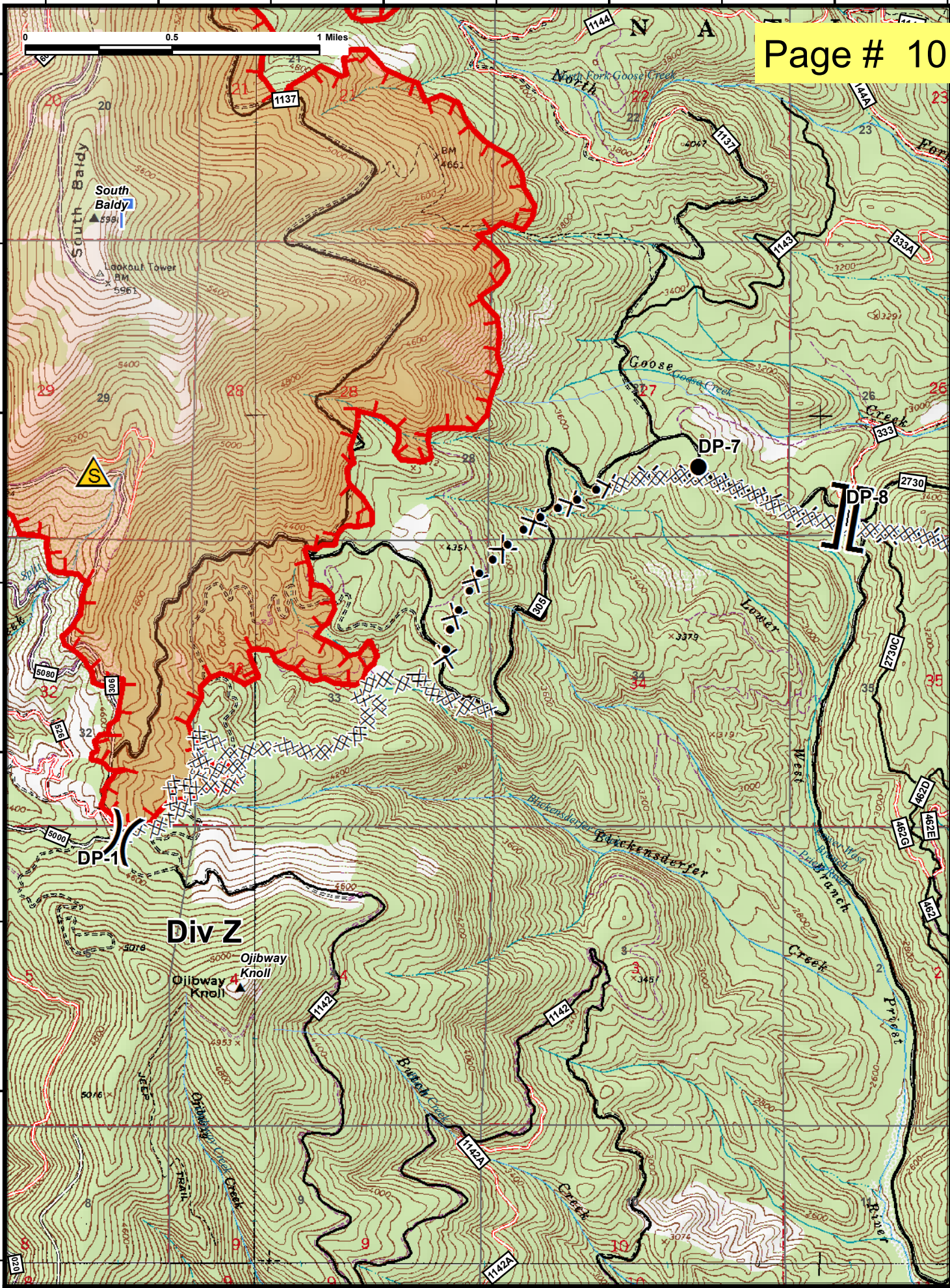
48°25'N

48°24'N

48°24'N

48°23'N

48°23'N



117°8'W

117°7'W

117°6'W

117°5'W

117°5'W

117°4'W

117°3'W

117°2'W

0 0.5 1 Miles

Page # 11

48°26'N

48°26'N

48°25'N

48°25'N

48°24'N

48°24'N

48°23'N

48°23'N

NATIONAL FOREST

Div T

WASHINGTON STATE

Goose Lake

1143

333A

333A

333

1098C

DP-11

DP-12

DP-9

DP-8

2730B

2730A

2730

1096A

1096A

1098B

305

2730C

462D

462E

462B

1095

1096A

1115

462A

462B

462C

462D

462E

462F

1095B

1095A

1098

463A

462

462A

462B

462C

462D

462E

462F

1098B

1106

END OREILLE CO  
BONNER CO

