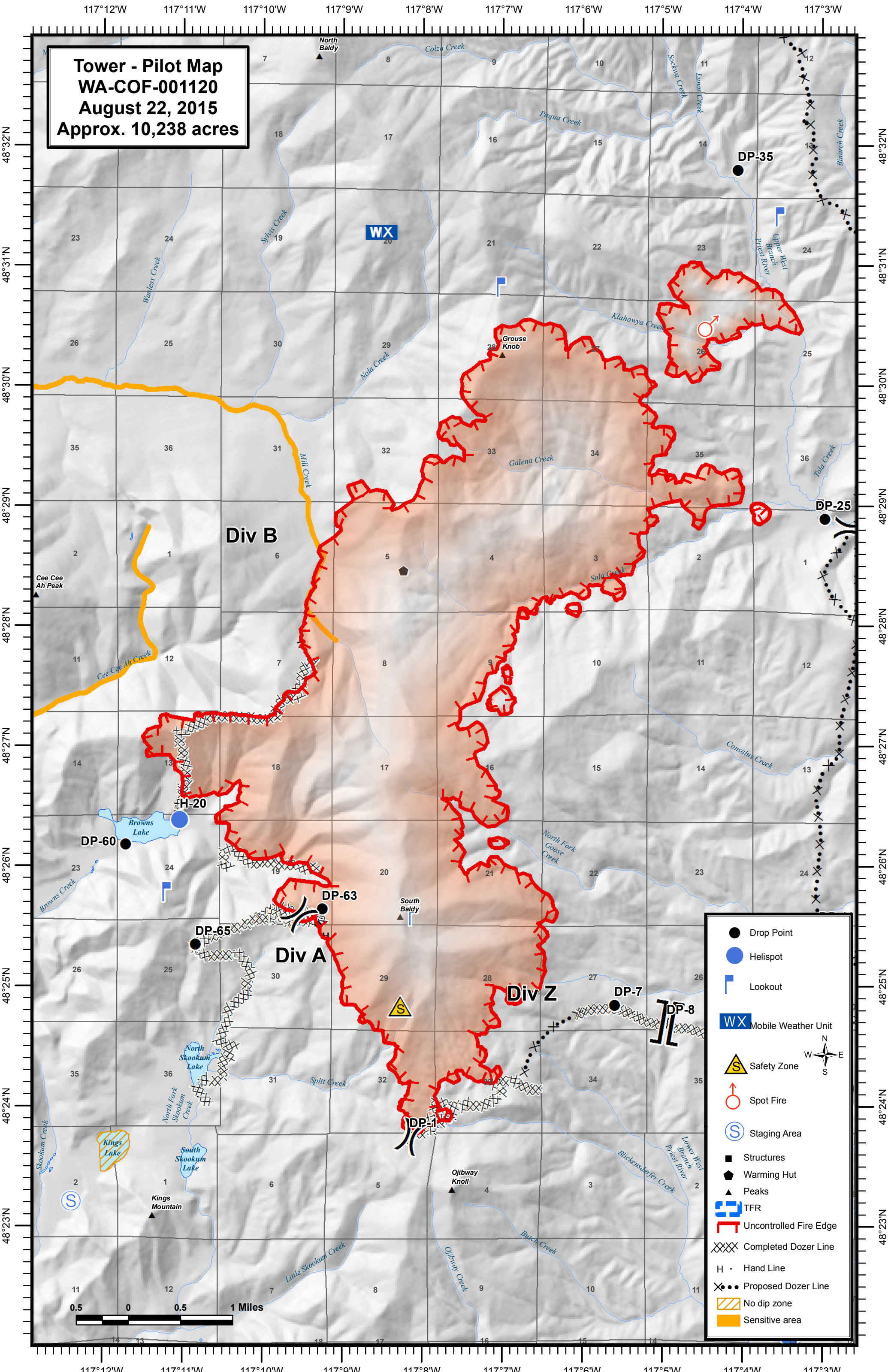


Tower - Pilot Map
WA-COF-001120
August 22, 2015
Approx. 10,238 acres



- Drop Point
- Helispot
- Lookout
- WX Mobile Weather Unit
- ▲ Safety Zone
- Spot Fire
- Staging Area
- Structures
- ◆ Warming Hut
- ▲ Peaks
- ☒ TFR
- ┌┐ Uncontrolled Fire Edge
- XXXX Completed Dozer Line
- H - Hand Line
- X... Proposed Dozer Line
- ▨ No dip zone
- Sensitive area

