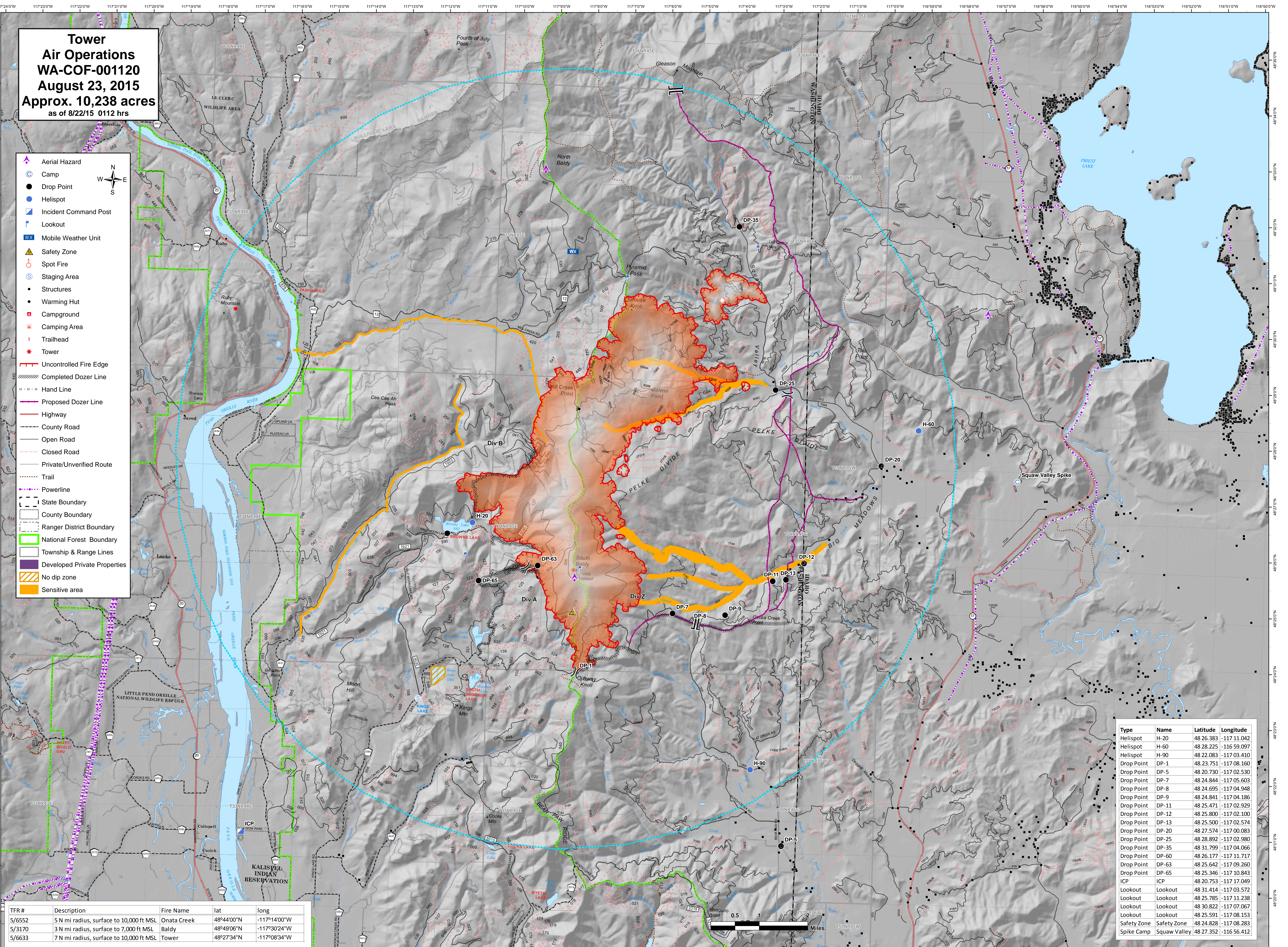
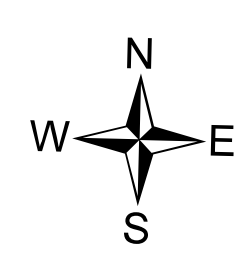


**Tower  
Air Operations  
WA-COF-001120  
August 23, 2015  
Approx. 10,238 acres  
as of 8/22/15 0112 hrs**

- Aerial Hazard
- Camp
- Drop Point
- Helispot
- Incident Command Post
- Lookout
- Mobile Weather Unit
- Safety Zone
- Spot Fire
- Staging Area
- Structures
- Warming Hut
- Campground
- Camping Area
- Trailhead
- Tower
- Uncontrolled Fire Edge
- Completed Dozer Line
- Hand Line
- Proposed Dozer Line
- Highway
- County Road
- Open Road
- Closed Road
- Private/Unverified Route
- Trail
- Powerline
- State Boundary
- County Boundary
- Ranger District Boundary
- National Forest Boundary
- Township & Range Lines
- Developed Private Properties
- No dip zone
- Sensitive area



TFR #	Description	Fire Name	lat	long
5/6552	5 N mi radius, surface to 10,000 ft MSL	Onata Creek	48°44'00"N	-117°14'00"W
5/3170	3 N mi radius, surface to 7,000 ft MSL	Baldy	48°49'06"N	-117°30'24"W
5/6633	7 N mi radius, surface to 10,000 ft MSL	Tower	48°27'34"N	-117°08'34"W

Type	Name	Latitude	Longitude
Helispot	H-20	48 26.383	-117 11.042
Helispot	H-60	48 28.225	-116 59.097
Helispot	H-90	48 22.083	-117 03.410
Drop Point	DP-1	48 23.751	-117 08.160
Drop Point	DP-5	48 20.730	-117 02.530
Drop Point	DP-7	48 24.844	-117 05.603
Drop Point	DP-8	48 24.695	-117 04.948
Drop Point	DP-9	48 24.841	-117 04.186
Drop Point	DP-11	48 25.471	-117 02.929
Drop Point	DP-12	48 25.800	-117 02.100
Drop Point	DP-13	48 25.500	-117 02.574
Drop Point	DP-20	48 27.574	-117 00.083
Drop Point	DP-25	48 28.892	-117 02.980
Drop Point	DP-35	48 31.799	-117 04.066
Drop Point	DP-60	48 26.177	-117 11.717
Drop Point	DP-63	48 25.642	-117 09.260
Drop Point	DP-65	48 25.346	-117 10.843
ICP	ICP	48 20.753	-117 17.049
Lookout	Lookout	48 31.414	-117 03.572
Lookout	Lookout	48 25.785	-117 11.238
Lookout	Lookout	48 30.822	-117 07.067
Lookout	Lookout	48 25.591	-117 08.153
Safety Zone	Safety Zone	48 24.828	-117 08.283
Spike Camp	Squaw Valley	48 27.352	-116 56.412

