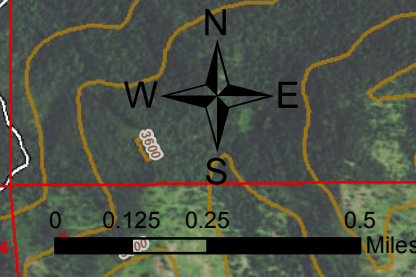
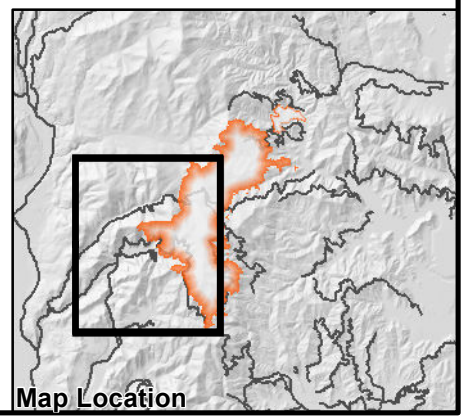


DIV A



Source: Esri, DeLorme, GeoEye, Earthstar Geographics, CNRS/Airbus DS, USDA, USGS, AeroGRID, IGN, SPT, Swire, and the GIS User Community



Tower
WA-COF-001120
August 23, 2015
Approx. 10,238 acres

- Drop Point
- Helispot
- ⬇ Lookout
- ⚠ Safety Zone
- ⬆ Warming Hut
- Uncontrolled Fire Edge
- ⊘ Completed Dozer Line
- Hand Line
- ▨ No dip zone
- Sensitive area