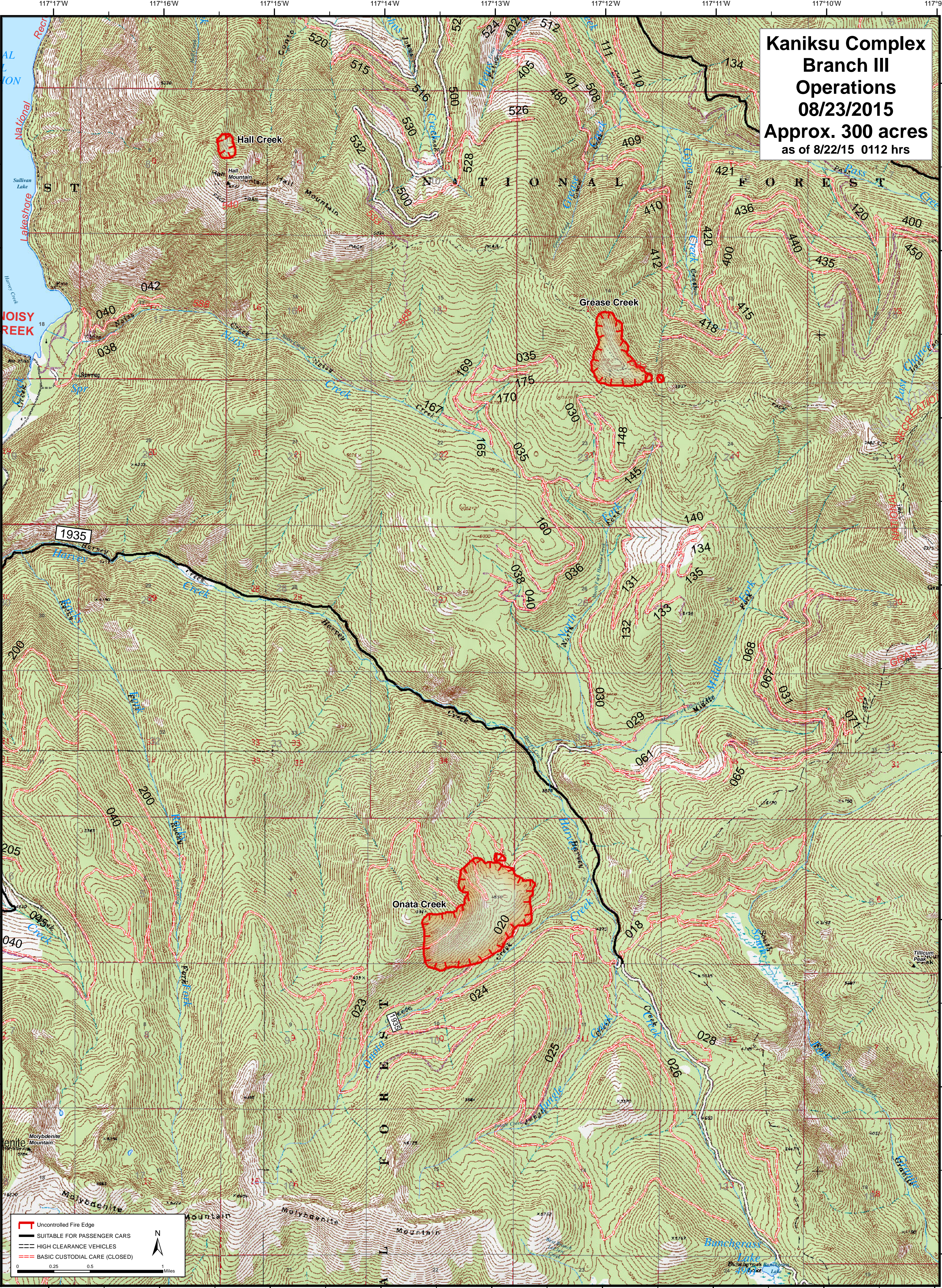


**Kaniksu Complex
Branch III
Operations
08/23/2015
Approx. 300 acres
as of 8/22/15 0112 hrs**



Uncontrolled Fire Edge
SUITABLE FOR PASSENGER CARS
HIGH CLEARANCE VEHICLES
BASIC CUSTODIAL CARE (CLOSED)

0 0.25 0.5 Miles

N