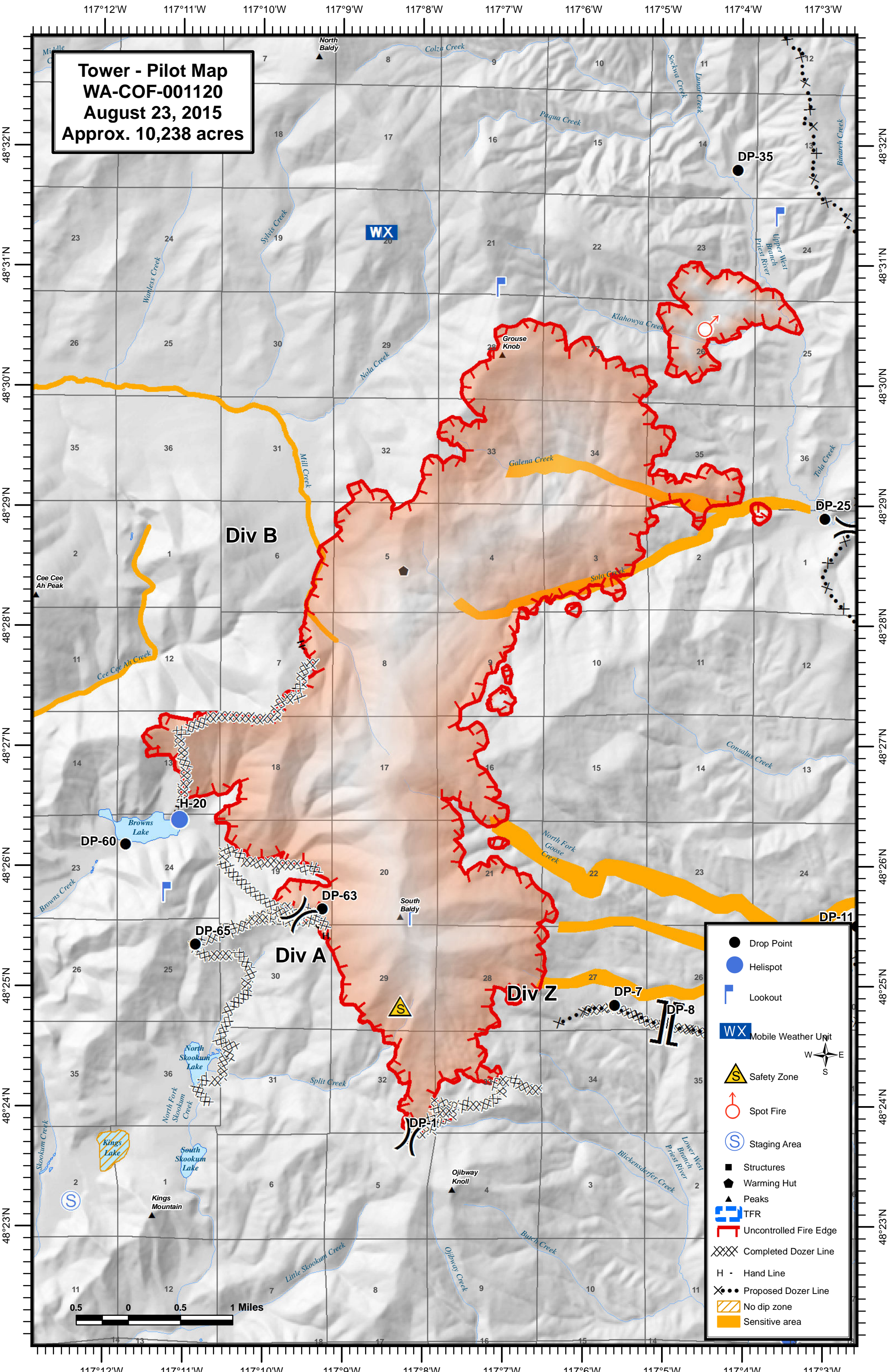


**Tower - Pilot Map**  
**WA-COF-001120**  
**August 23, 2015**  
**Approx. 10,238 acres**



- Drop Point
- Helispot
- Lookout
- Mobile Weather Unit
- Safety Zone
- Spot Fire
- Staging Area
- Structures
- Warming Hut
- Peaks
- TFR
- Uncontrolled Fire Edge
- Completed Dozer Line
- Hand Line
- Proposed Dozer Line
- No dip zone
- Sensitive area