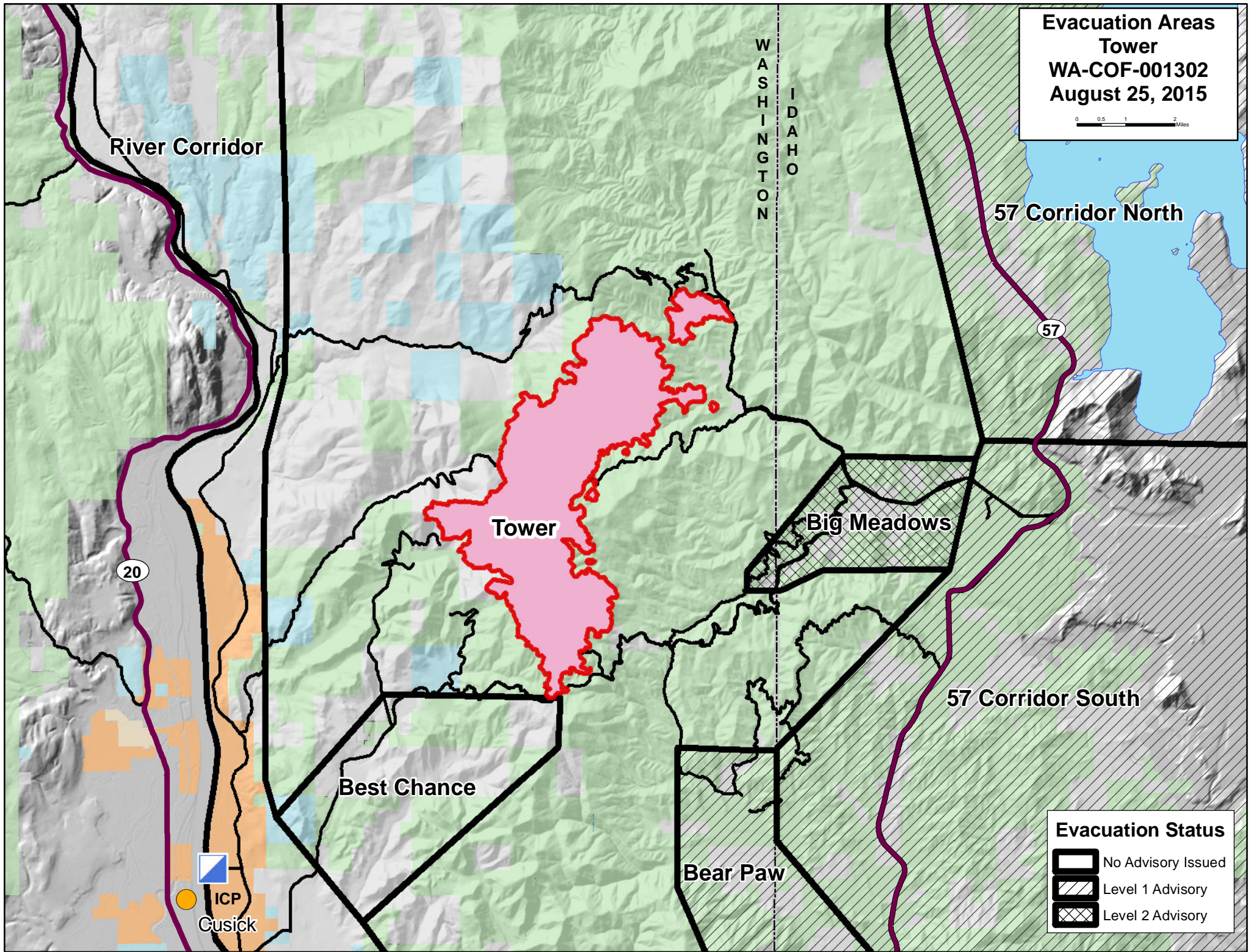


**Evacuation Areas  
Tower  
WA-COF-001302  
August 25, 2015**

0 0.5 1 2 Miles



River Corridor

WASHINGTON  
IDAHO

57 Corridor North

57

20

Tower

Big Meadows




57 Corridor South

Best Chance

Bear Paw

ICP  
Cusick

**Evacuation Status**

-  No Advisory Issued
-  Level 1 Advisory
-  Level 2 Advisory