

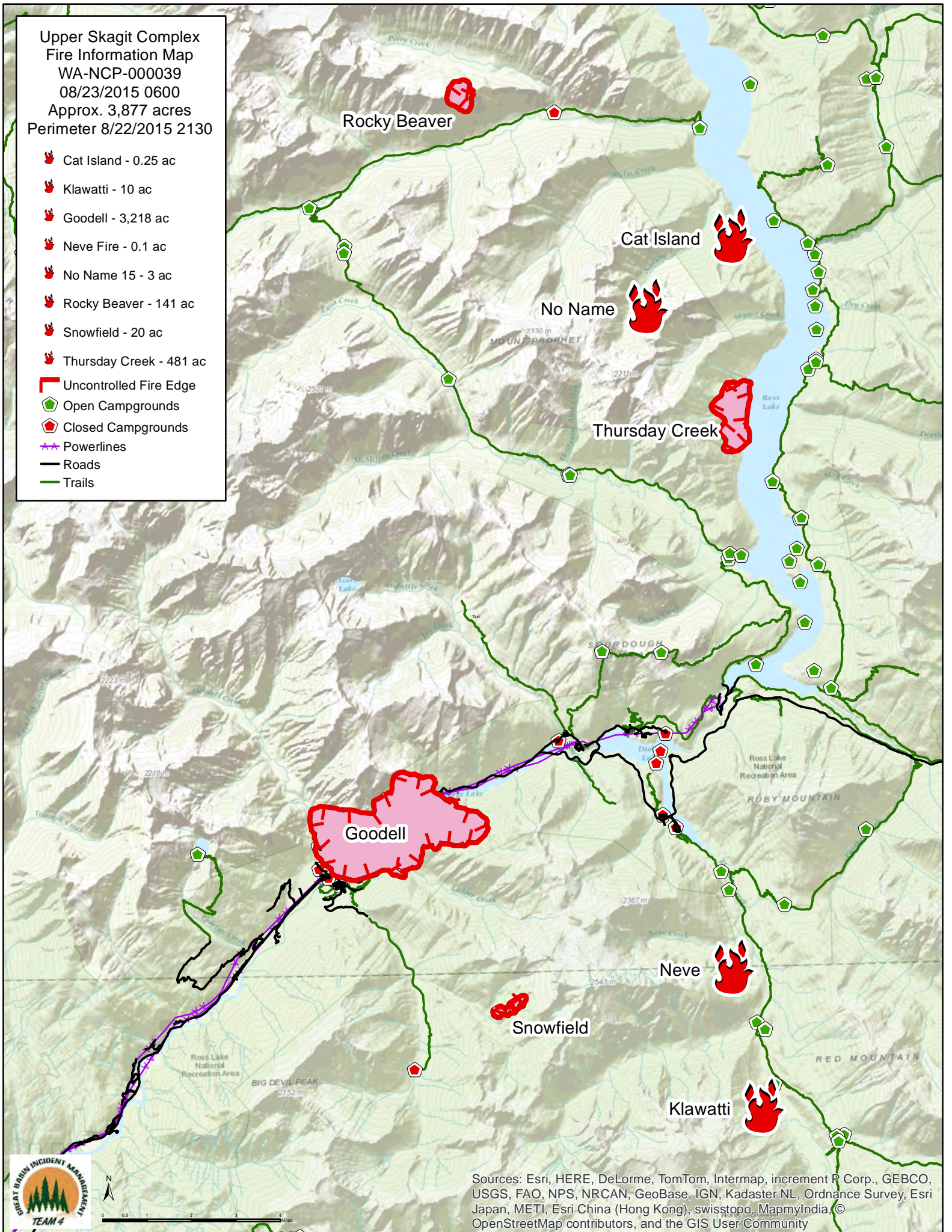


Upper Skagit Complex  
 Fire Information Map  
 WA-NCP-000039  
 08/23/2015 0600  
 Approx. 3,877 acres  
 Perimeter 8/22/2015 2130

-  Cat Island - 0.25 ac
-  Klawatti - 10 ac
-  Goodell - 3,218 ac
-  Neve Fire - 0.1 ac
-  No Name 15 - 3 ac
-  Rocky Beaver - 141 ac
-  Snowfield - 20 ac
-  Thursday Creek - 481 ac
-  Uncontrolled Fire Edge
-  Open Campgrounds
-  Closed Campgrounds
-  Powerlines
-  Roads
-  Trails



Sources: Esri, HERE, DeLorme, TomTom, Intermap, increment P Corp., GEBCO, USGS, FAO, NPS, NRCAN, GeoBase, IGN, Kadaster NL, Ordnance Survey, Esri Japan, METI, Esri China (Hong Kong), swisstopo, MapmyIndia, © OpenStreetMap contributors, and the GIS User Community