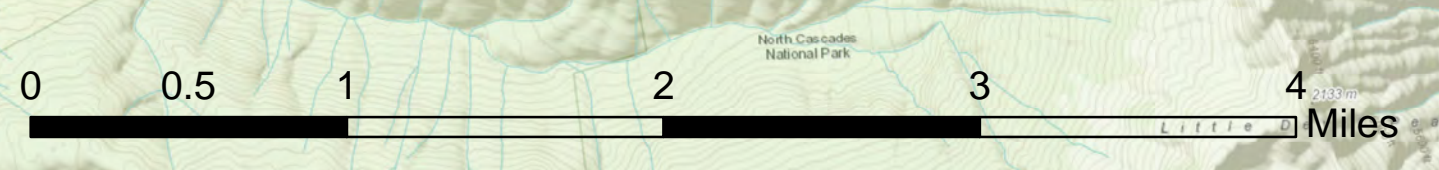
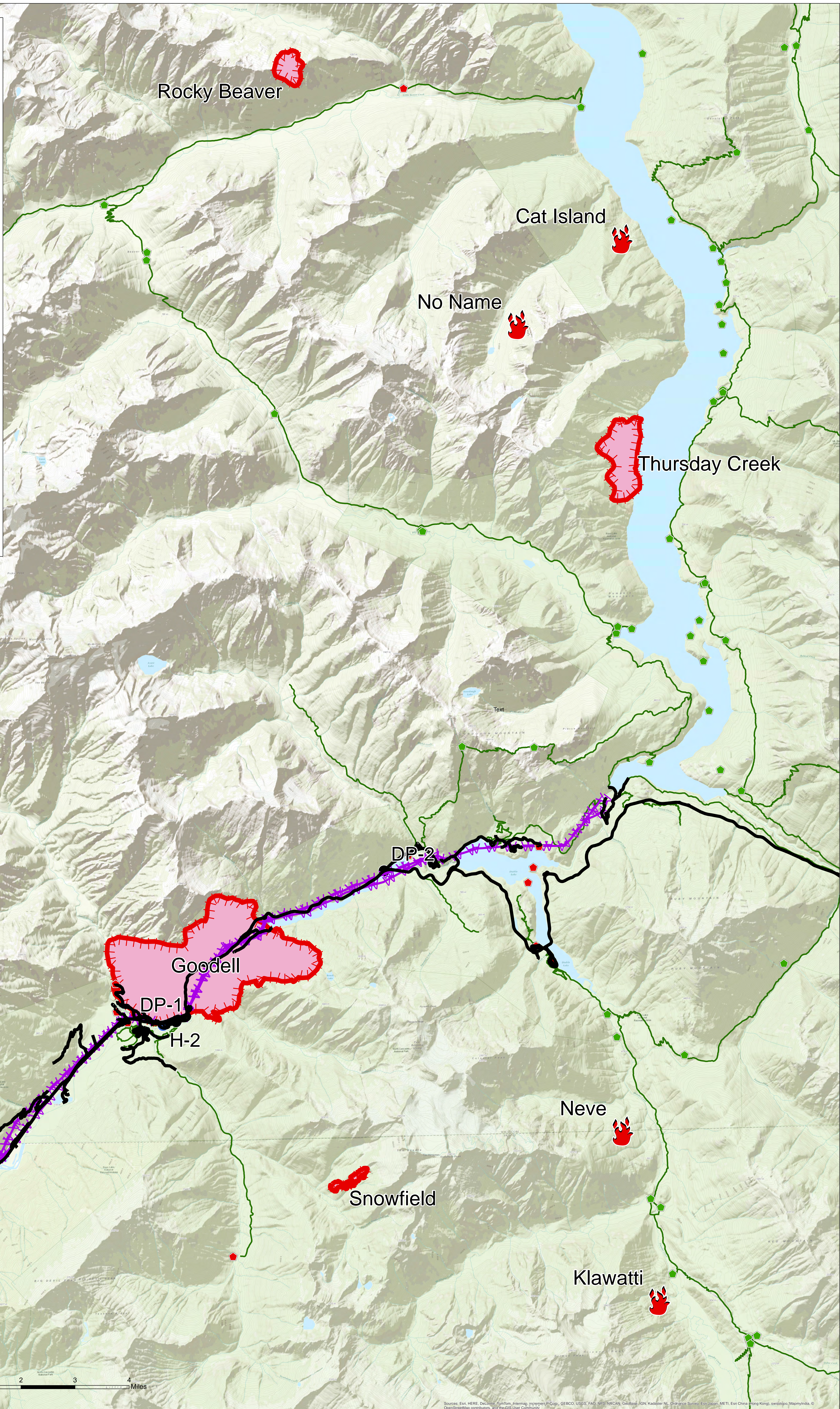


Upper Skagit Complex
 Fire Situation Map
 WA-NCP-000039
 08/23/2015 0600
 Approx. 3,877 acres
 Perimeter 8/22/2015 2130

-  Cat Island - 0.25 ac
-  Klawatti - 10 ac
-  Goodell - 3,218 ac
-  Neve Fire - 0.1 ac
-  No Name 15 - 3 ac
-  Rocky Beaver - 141 ac
-  Snowfield - 20 ac
-  Thursday Creek - 481 ac
-  Roads
-  Open Campgrounds
-  Closed Campgrounds
-  Powerlines
-  Drop Point
-  Helispot
-  Uncontrolled Fire Edge
-  Trails



Sources: Esri, HERE, DeLorme, TomTom, Intermap, iPC, GEBCO, USGS, FAO, NPS, NRCAN, GeBCO, IGN, Kadaster NL, Ordnance Survey, Esri Japan, METI, Esri China (Hong Kong), Swisstopo, Mapbox, © OpenStreetMap contributors, and the GIS User Community