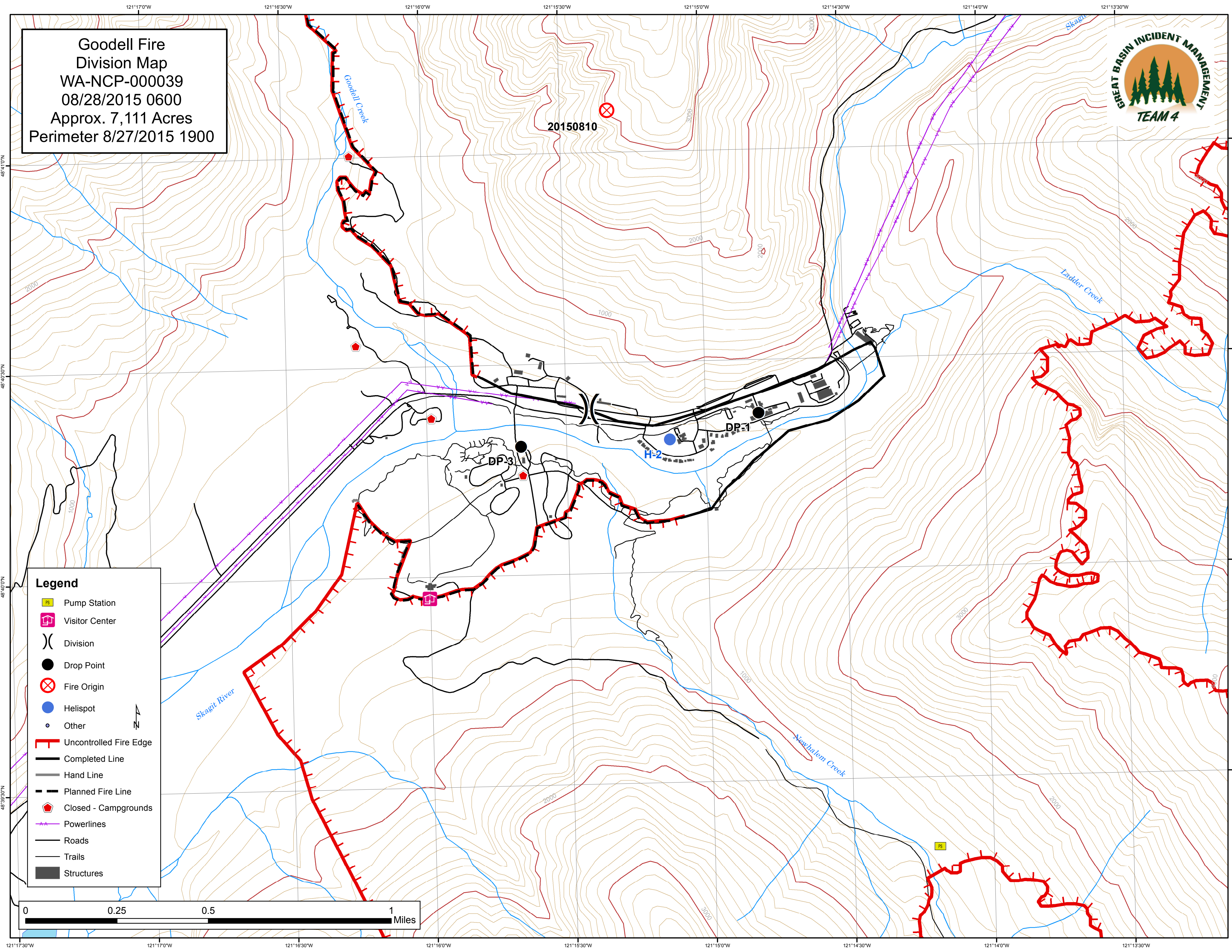
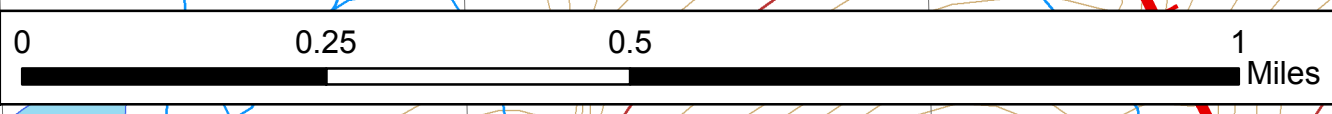


**Goodell Fire**  
 Division Map  
 WA-NCP-000039  
 08/28/2015 0600  
 Approx. 7,111 Acres  
 Perimeter 8/27/2015 1900



- Legend**
- Pump Station
  - Visitor Center
  - Division
  - Drop Point
  - Fire Origin
  - Helispot
  - Other
  - Uncontrolled Fire Edge
  - Completed Line
  - Hand Line
  - Planned Fire Line
  - Closed - Campgrounds
  - Powerlines
  - Roads
  - Trails
  - Structures



121°17'0"W 121°16'30"W 121°16'0"W 121°15'30"W 121°15'0"W 121°14'30"W 121°14'0"W 121°13'30"W  
 48°41'0"N 48°40'30"N 48°40'0"N 48°39'30"N 48°39'0"N 48°38'30"N 48°38'0"N  
 Skagit River Goodell Creek Ladder Creek Newhalem Creek  
 20150810 DP-1 DP-3 H-2  
 2000 1000 3000