

# Wolverine Fire WA-OWF-000287

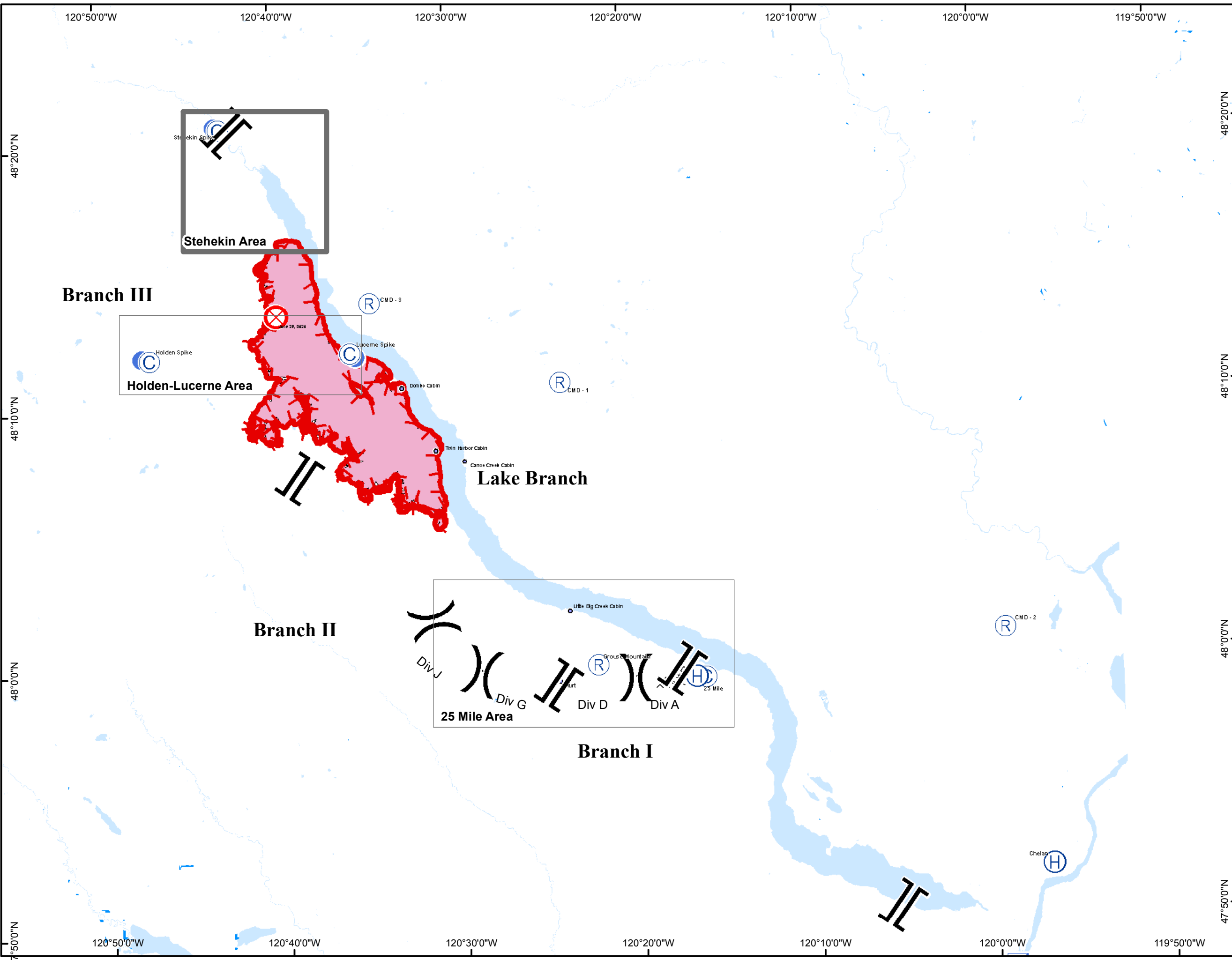
IAP Map  
August 6, 2015

0 1 2 4  
Miles

Stehekin Area  
Map Packet

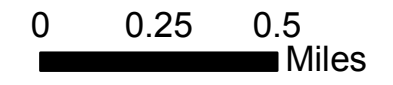
Perimeter as of  
August 3, 2015 at 1850  
25,640 acres

- Other Index Areas
- Stehekin Area



# Wolverine Fire WA-OWF-000287

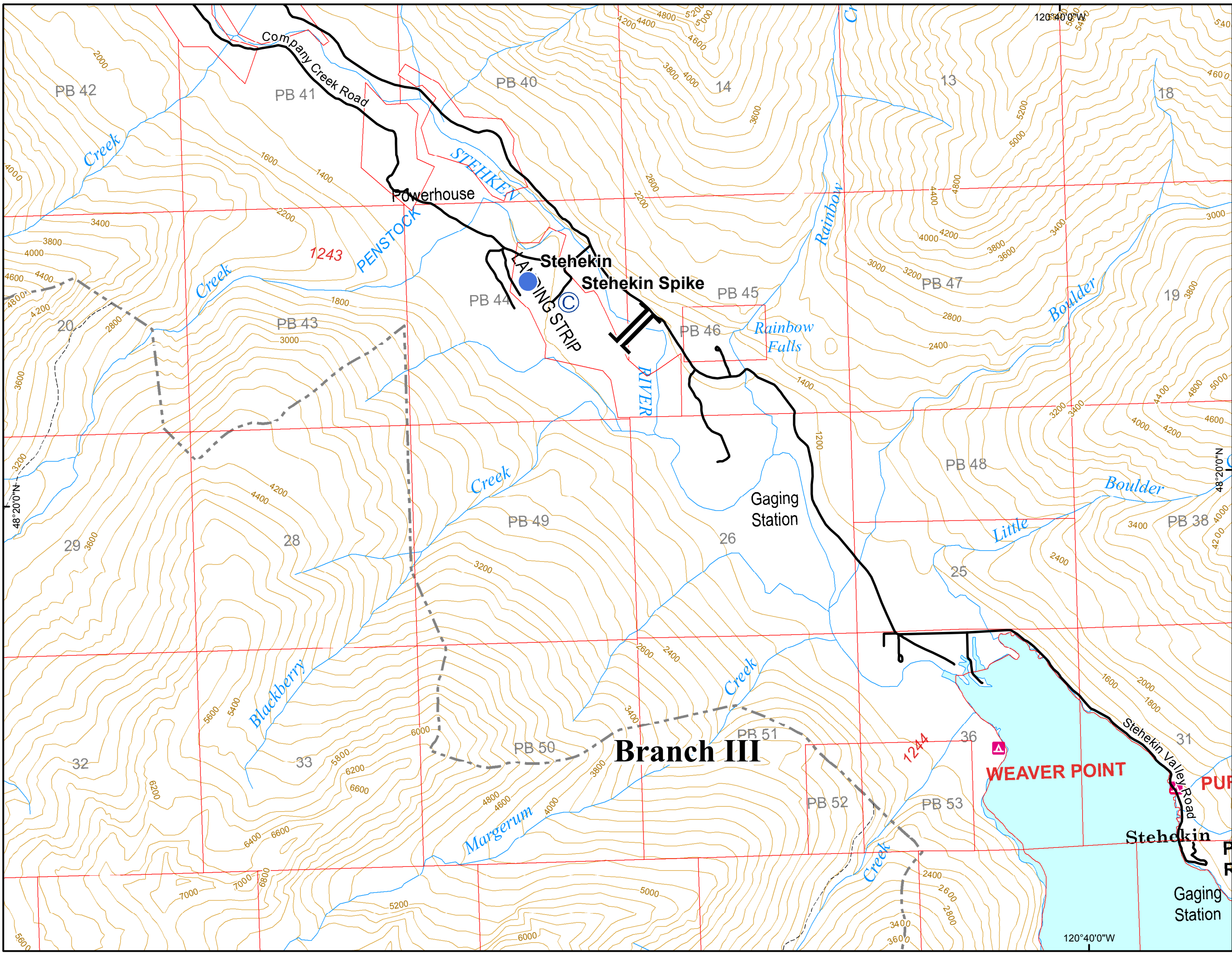
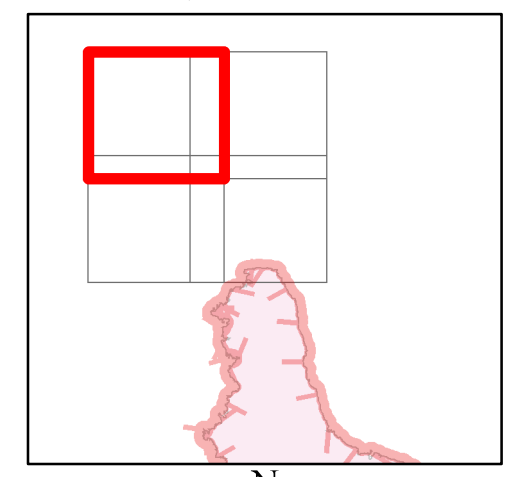
## IAP Map August 6, 2015



Stehekin Area  
Page 1 of 4

- Roads
- || Branch
- © Camp
- Helispot

Perimeter as of  
August 3, 2015 at 1850  
25,640 acres





# Wolverine Fire WA-OWF-000287

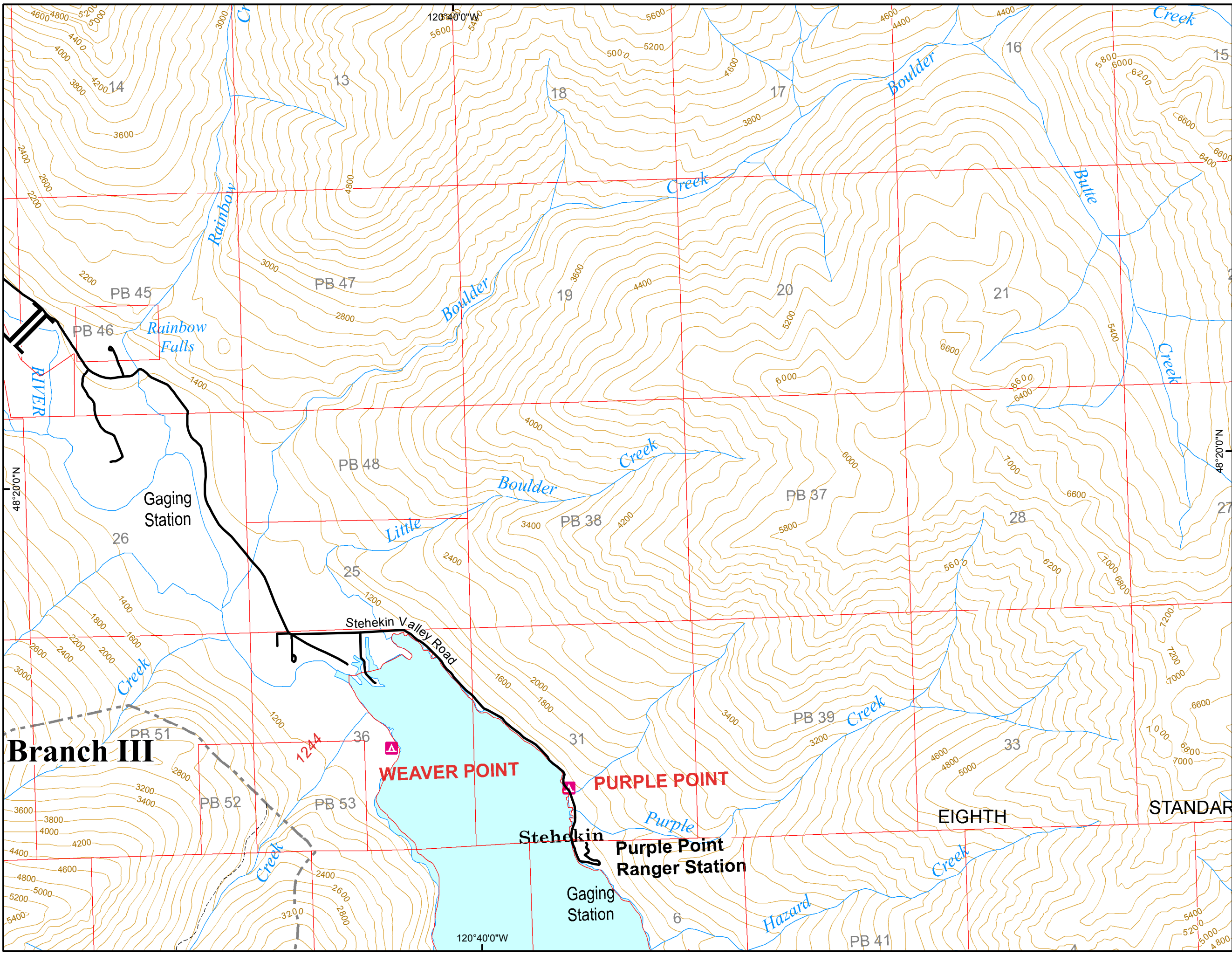
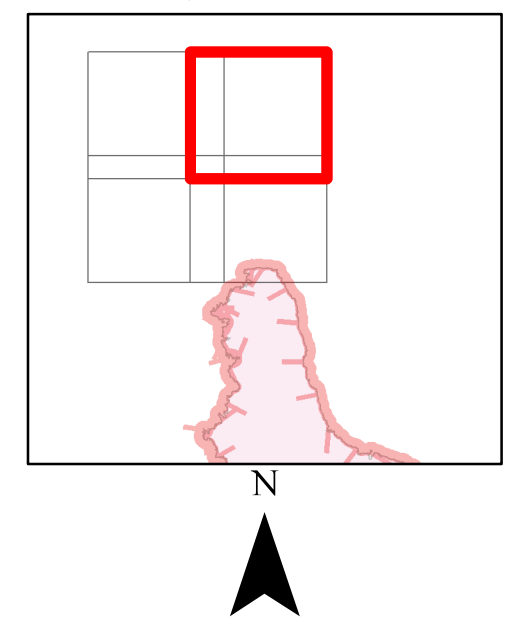
## IAP Map August 6, 2015



Stehekin Area  
Page 2 of 4

- Roads
- || Branch

Perimeter as of  
August 3, 2015 at 1850  
25,640 acres



### Branch III

**WEAVER POINT**

**PURPLE POINT**

**Purple Point  
Ranger Station**

**EIGHTH**

**STANDAR**



# Wolverine Fire WA-OWF-000287

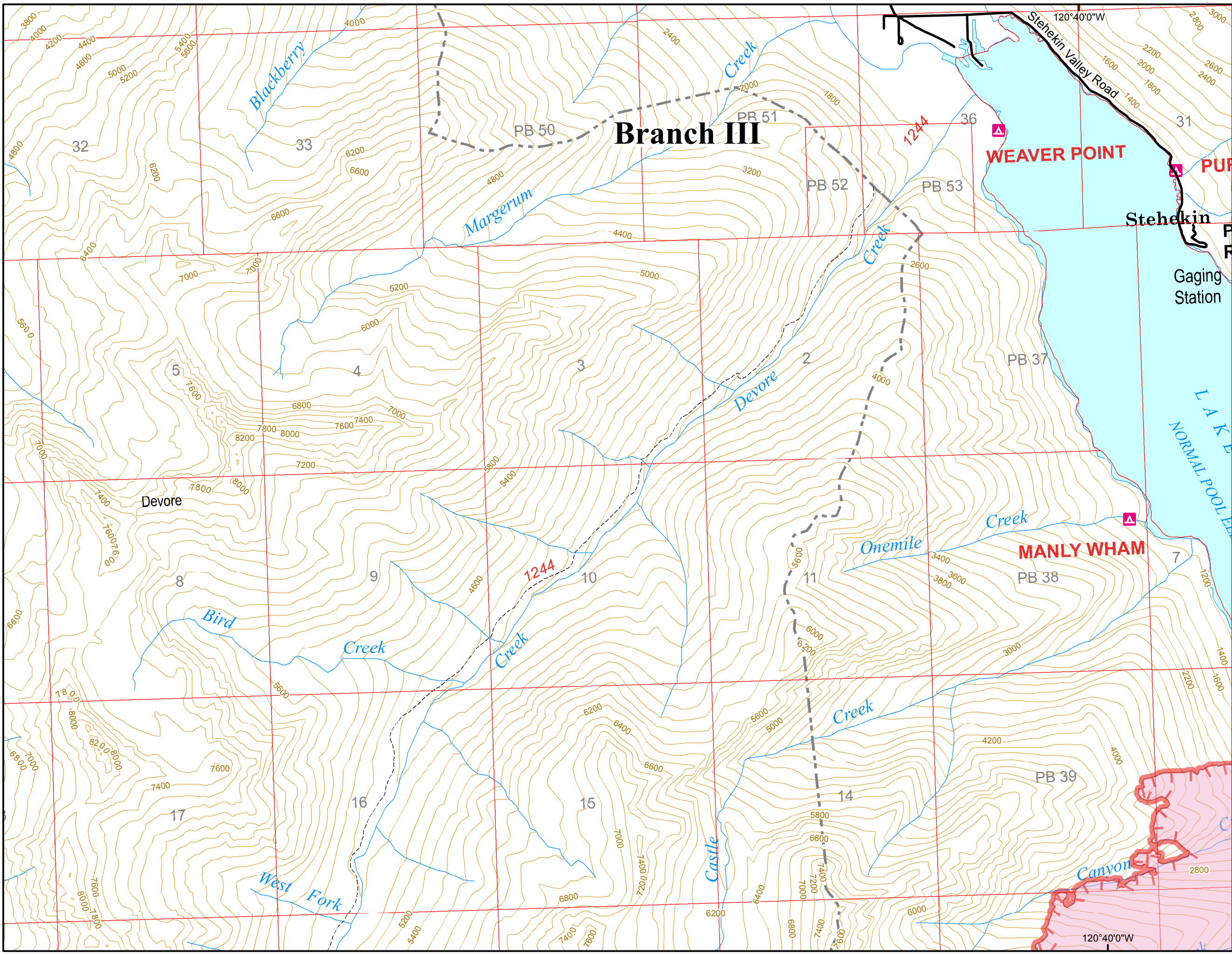
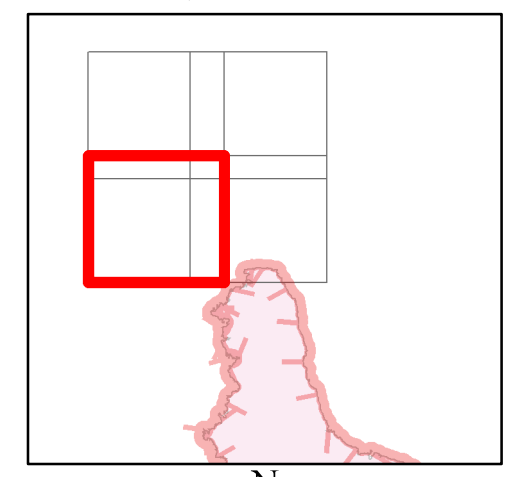
IAP Map  
August 6, 2015



Stehekin Area  
Page 3 of 4

- Roads
- ▬▬▬ Uncontrolled Fire Edge
- FirePolygon

Perimeter as of  
August 3, 2015 at 1850  
25,640 acres





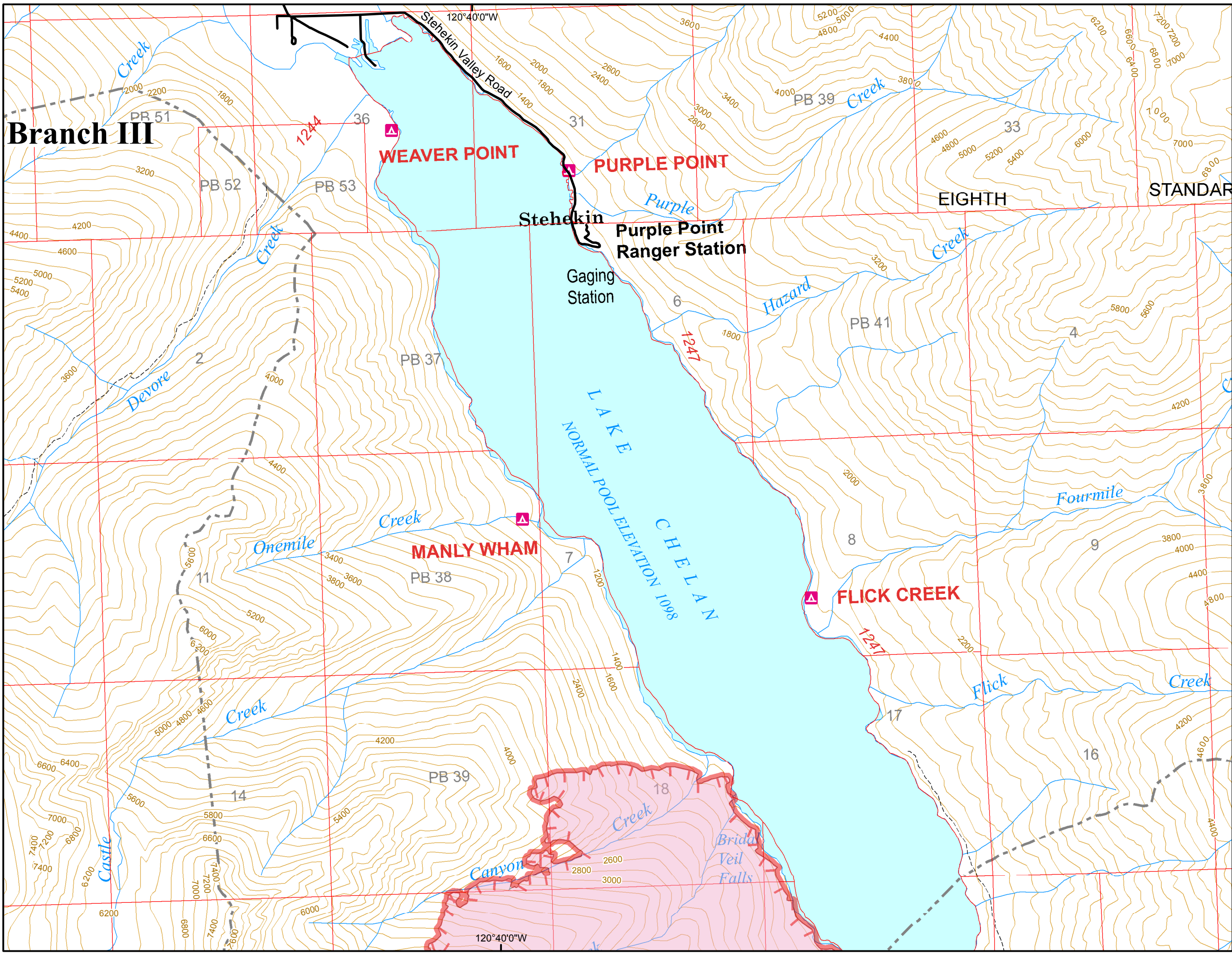
# Wolverine Fire WA-OWF-000287

IAP Map  
August 6, 2015



Stehekin Area  
Page 4 of 4

## Branch III



- Roads
- - - Uncontrolled Fire Edge
- FirePolygon

Perimeter as of  
August 3, 2015 at 1850  
25,640 acres

