

Wolverine Fire

WA-OWF-000287

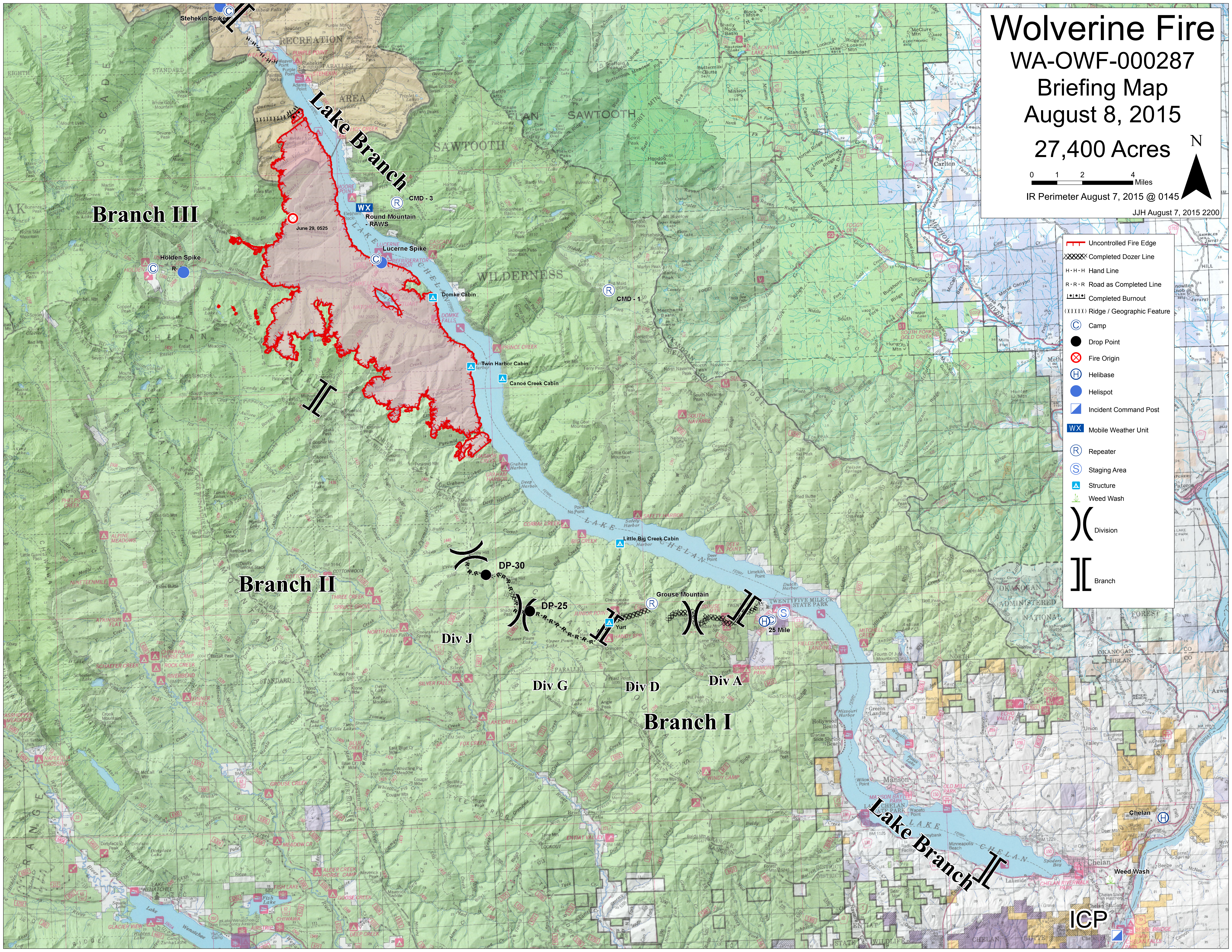
Briefing Map

August 8, 2015

27,400 Acres

IR Perimeter August 7, 2015 @ 0145

JJH August 7, 2015 2200



- Uncontrolled Fire Edge
- Completed Dozer Line
- Hand Line
- Road as Completed Line
- Completed Burnout
- Ridge / Geographic Feature
- Camp
- Drop Point
- Fire Origin
- Helibase
- Helispot
- Incident Command Post
- Mobile Weather Unit
- Repeater
- Staging Area
- Structure
- Weed Wash
- Division
- Branch

June 29, 0525

Branch III

Branch II

Branch I

Div J

Div G

Div D

Div A

ICP