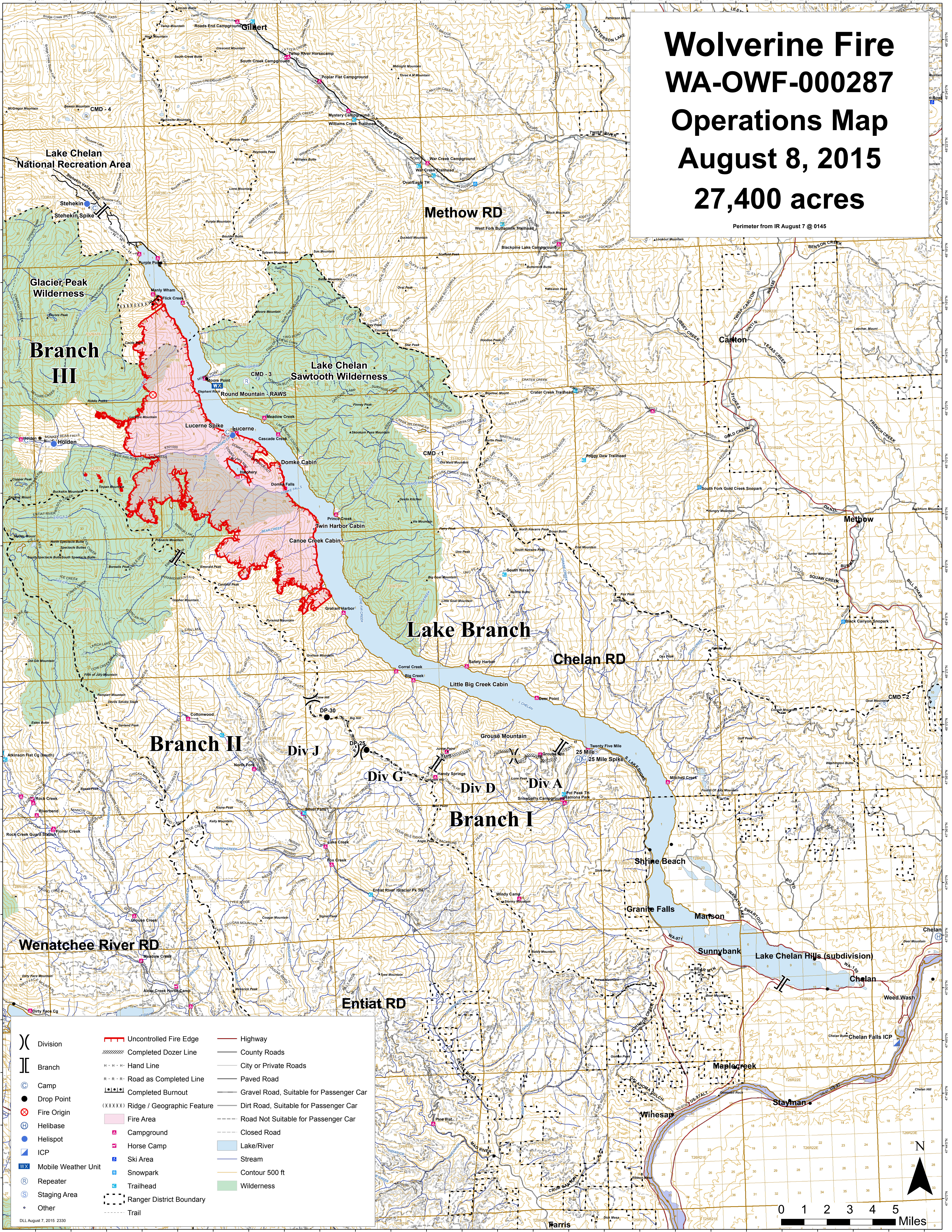


Wolverine Fire WA-OWF-000287 Operations Map August 8, 2015 27,400 acres

Perimeter from IR August 7 @ 0145



(X) Division	Uncontrolled Fire Edge	Highway
(I) Branch	Completed Dozer Line	County Roads
(C) Camp	Hand Line	City or Private Roads
(●) Drop Point	R - R - R Road as Completed Line	Paved Road
(⊗) Fire Origin	Completed Burnout	Gravel Road, Suitable for Passenger Car
(H) Helibase	(XXXXXX) Ridge / Geographic Feature	Dirt Road, Suitable for Passenger Car
(●) Helispot	Fire Area	Road Not Suitable for Passenger Car
(W) Mobile Weather Unit	Campground	Closed Road
(R) Repeater	Horse Camp	Lake/River
(S) Staging Area	Ski Area	Stream
(○) Other	Snowpark	Contour 500 ft
	Trailhead	Wilderness
	Ranger District Boundary	
	Trail	

DLL August 7, 2015 2330

