

Wolverine Fire

WA-OWF-000287

Briefing Map

August 9, 2015

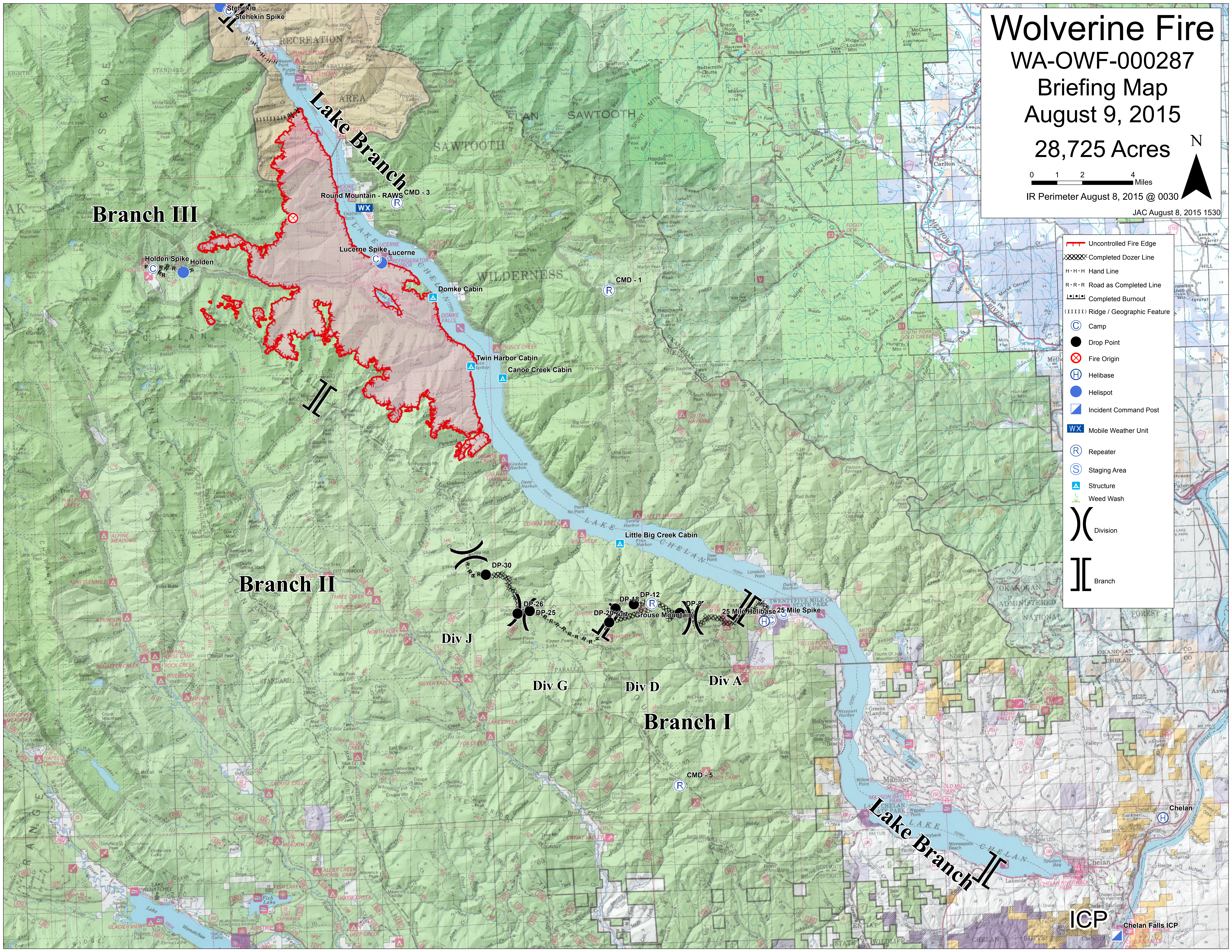
28,725 Acres

0 1 2 4 Miles

IR Perimeter August 8, 2015 @ 0030

JAC August 8, 2015 1530

- Uncontrolled Fire Edge
- Completed Dozer Line
- Hand Line
- Road as Completed Line
- Completed Burnout
- Ridge / Geographic Feature
- Camp
- Drop Point
- Fire Origin
- Helibase
- Helispot
- Incident Command Post
- Mobile Weather Unit
- Repeater
- Staging Area
- Structure
- Weed Wash
- Division
- Branch



Branch III

Branch II

Branch I

Div J

Div G

Div D

Div A

Lake Branch I

ICP Chelan Falls ICP