

Wolverine Fire

WA-OWF-000287

Briefing Map

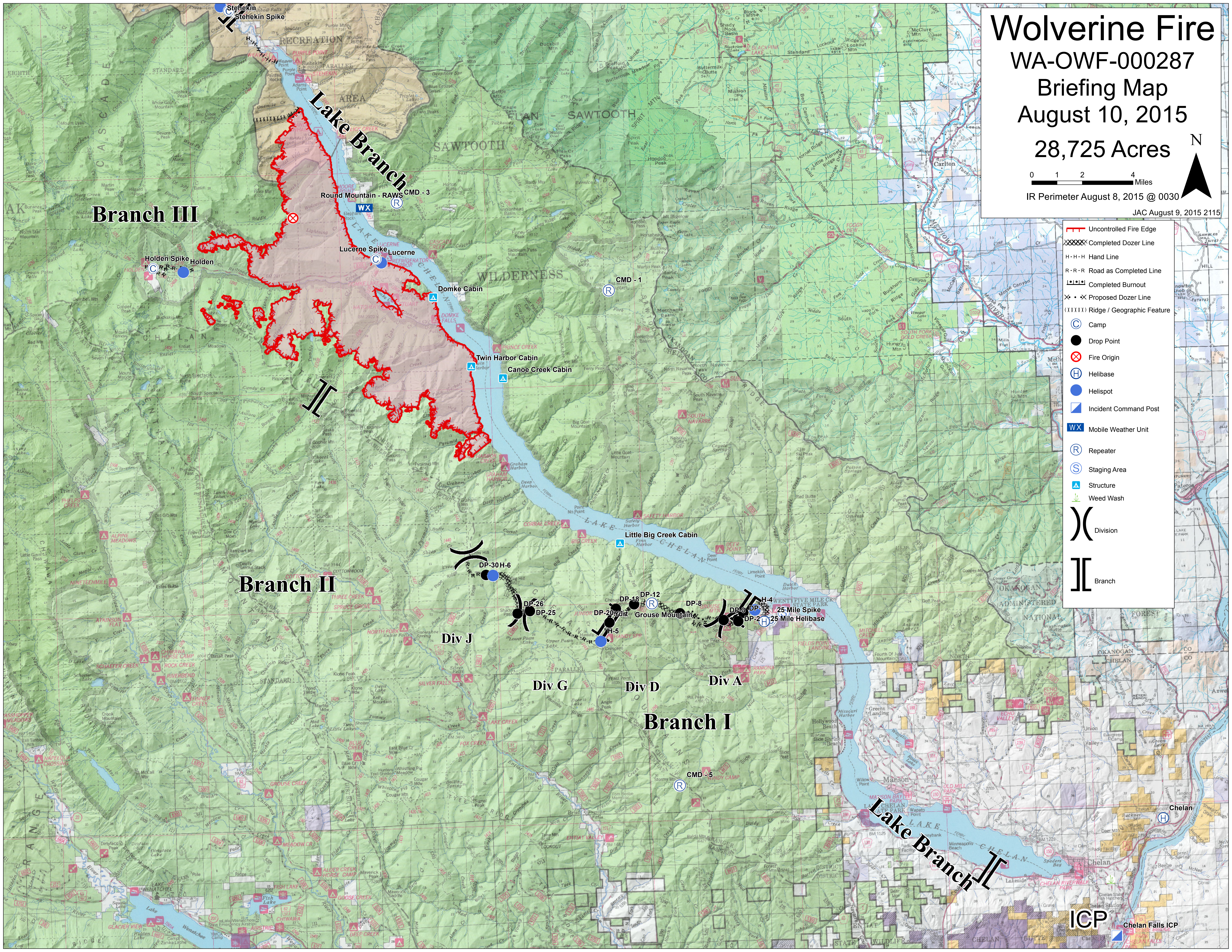
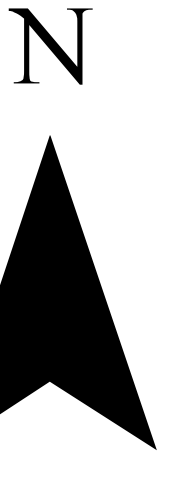
August 10, 2015

28,725 Acres

0 1 2 4 Miles

IR Perimeter August 8, 2015 @ 0030

JAC August 9, 2015 2115



- Uncontrolled Fire Edge
- Completed Dozer Line
- Hand Line
- Road as Completed Line
- Completed Burnout
- Proposed Dozer Line
- Ridge / Geographic Feature
- Camp
- Drop Point
- Fire Origin
- Helibase
- Helispot
- Incident Command Post
- Mobile Weather Unit
- Repeater
- Staging Area
- Structure
- Weed Wash
- Division
- Branch

Branch III

Branch II

Branch I

Div J

Div G

Div D

Div A

Holden Spike

Lucerne

Domke Cabin

Twin Harbor Cabin

Canoe Creek Cabin

CMD - 1

DP-30H-6

DP-26

DP-25

DP-18

DP-12

DP-8

DP-4

DP-2

25 Mile Spike

25 Mile Helibase

CMD - 5

ICP

Chelan Falls ICP