

# Wolverine Fire

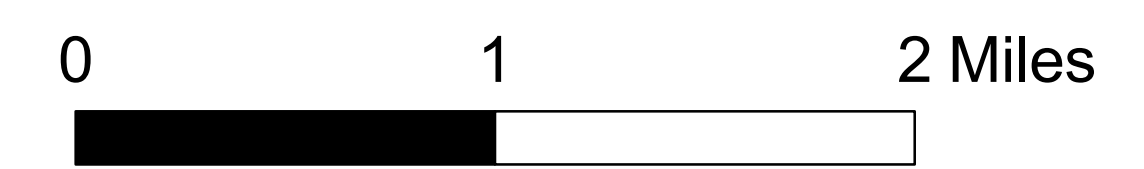
## WA-OWF-000287

### 25 Mile Operations Map

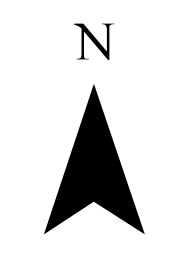
#### August 10, 2015

#### 28,725 acres

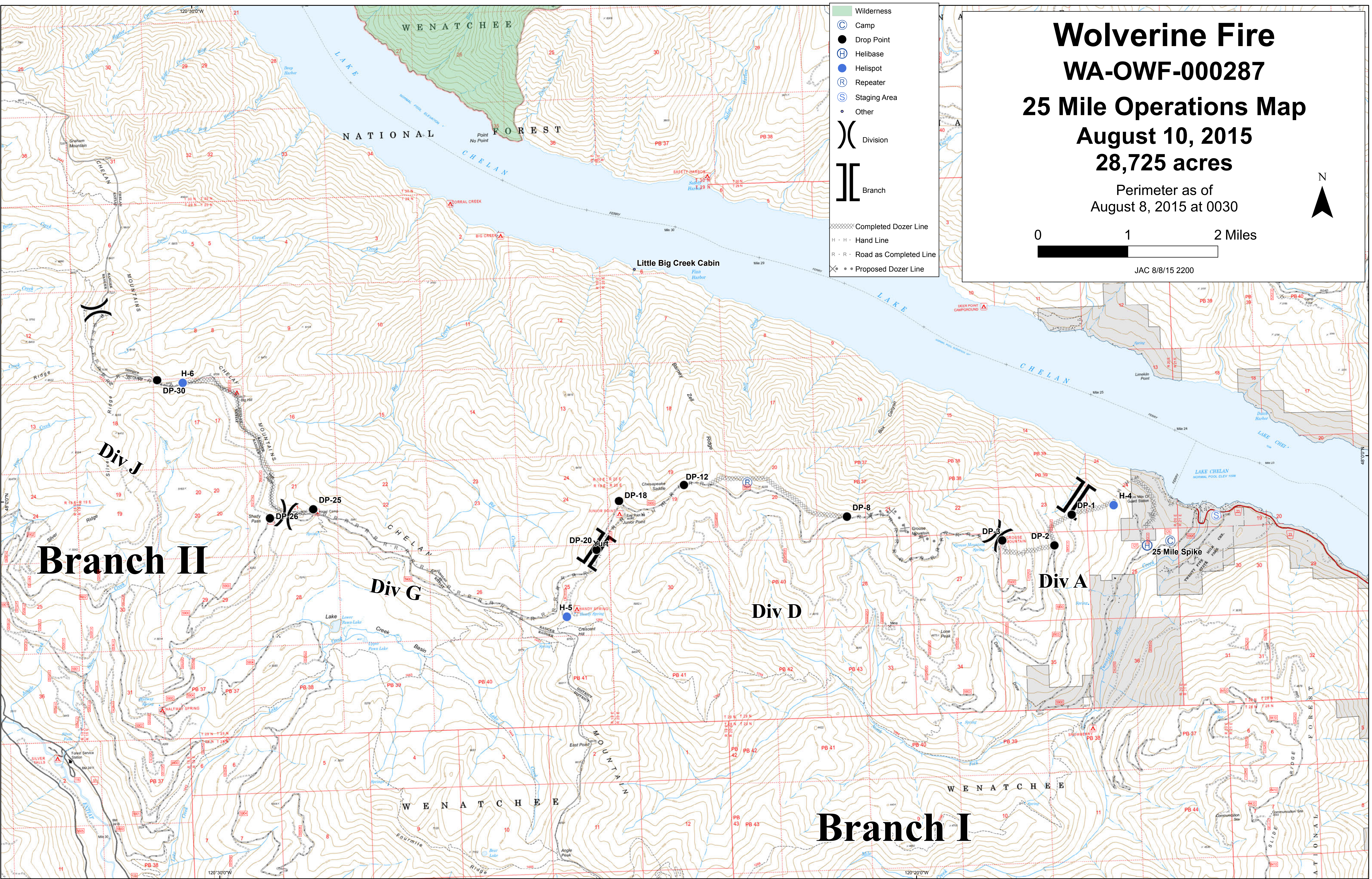
Perimeter as of  
August 8, 2015 at 0030



JAC 8/8/15 2200



- Wilderness
- Camp
- Drop Point
- Helibase
- Helispot
- Repeater
- Staging Area
- Other
- ) Division
- ] Branch
- Completed Dozer Line
- Hand Line
- Road as Completed Line
- Proposed Dozer Line



**Branch II**

**Div D**

**Div A**

**Branch I**

**Div G**

**Div J**