

- Wilderness
- Fire Area
- [[Branch
- © Camp
- Helispot
- Uncontrolled Fire Edge
- Hand Line
- Completed Burnout
- Ridge / Geographic Feature
- Contour 200 ft

Wolverine Fire

WA-OWF-000287

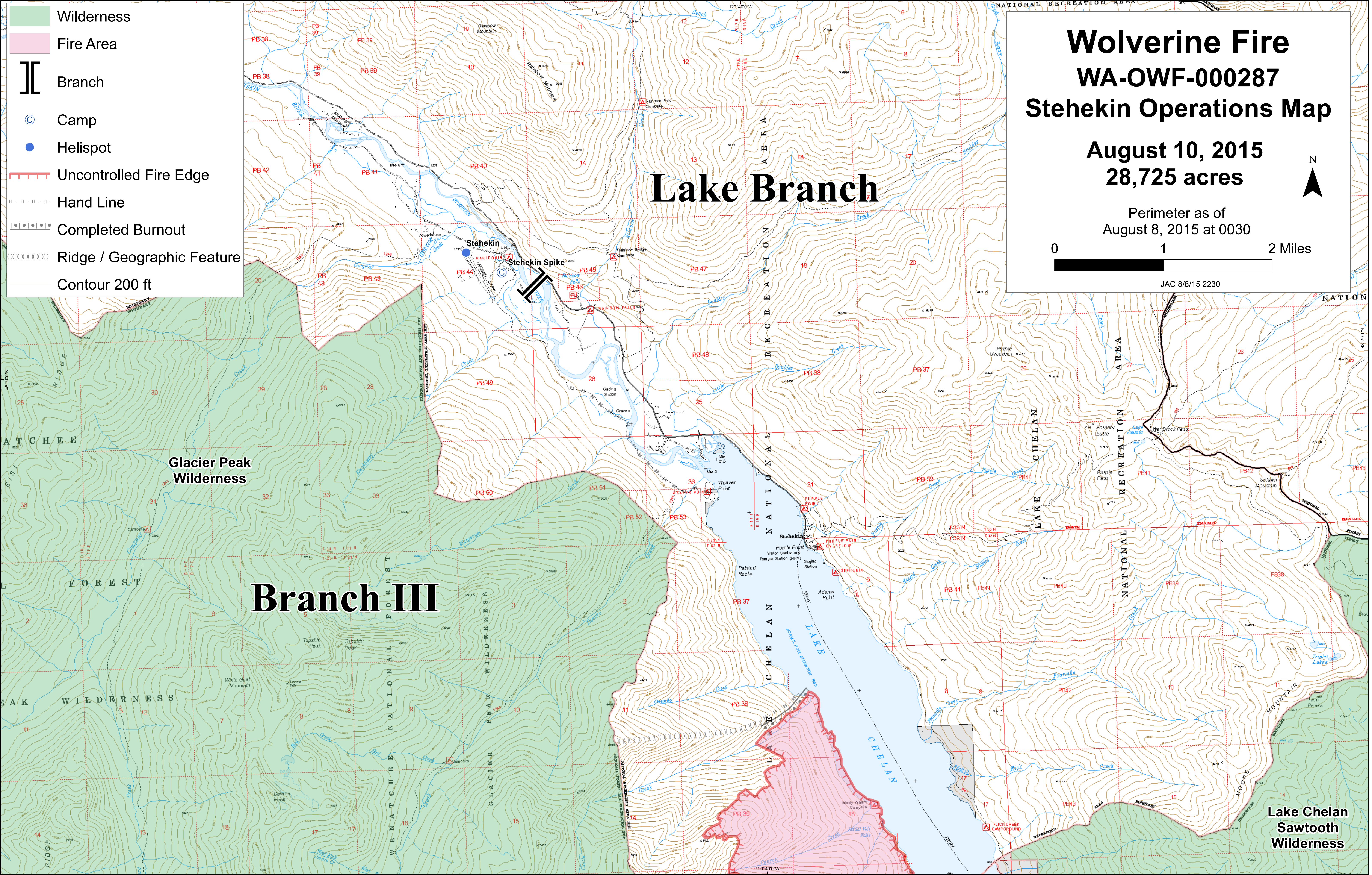
Stehekin Operations Map

August 10, 2015
28,725 acres

Perimeter as of
August 8, 2015 at 0030

0 1 2 Miles

JAC 8/8/15 2230



Branch III

Lake Branch

**Lake Chelan
Sawtooth
Wilderness**