



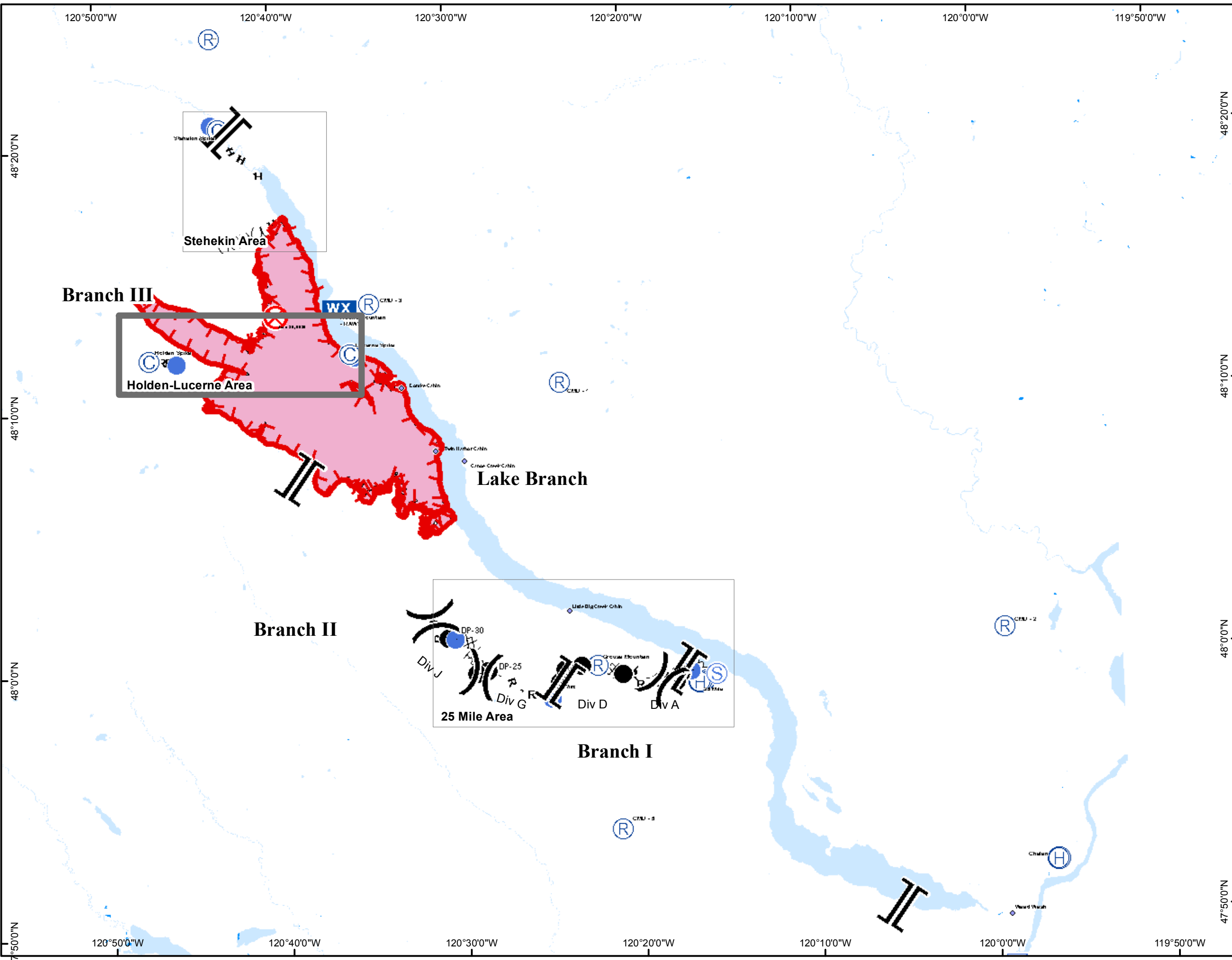
# Wolverine Fire WA-OWF-000287 IAP Map August 11, 2015

0 1 2 4  
Miles

## Holden Lucerne Area Map Packet

Perimeter as of  
August 10, 2015 at 1400  
34,500 acres

 Holden\_Lucerne Area  
 Other Index Areas



# Wolverine Fire WA-OWF-000287 IAP Map August 11, 2015

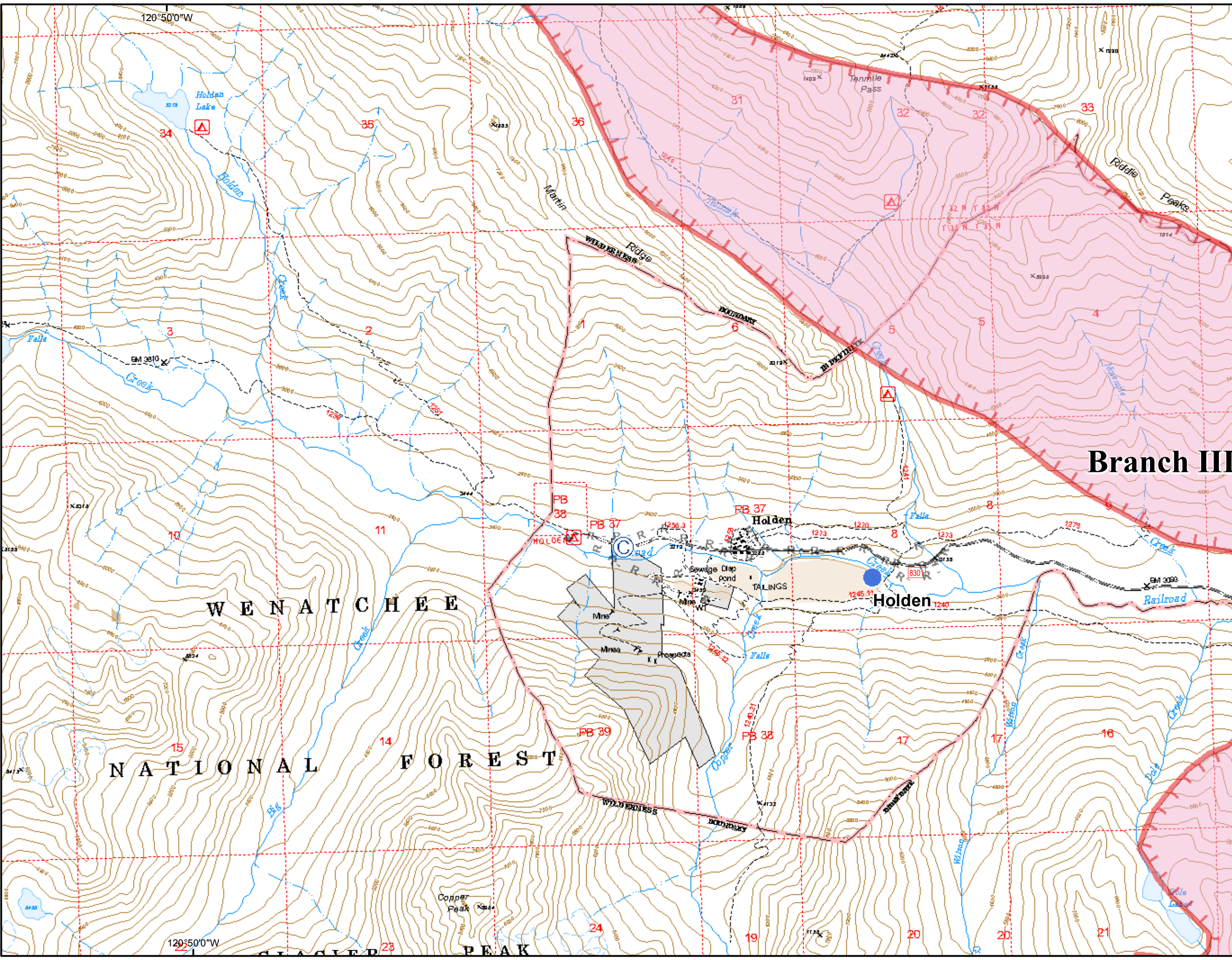
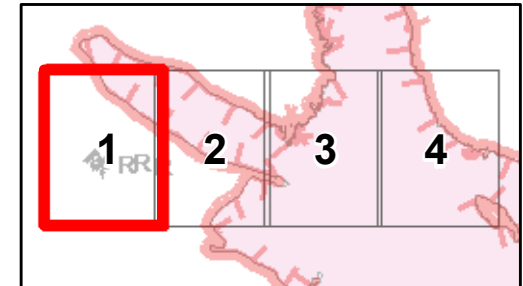
0 0.25 0.5 Miles

## Holden-Lucerne Area Page 1 of 4

Perimeter as of  
August 10, 2015 at 1400  
34,500 acres

**Branch III**

- Ⓒ Camp
- Helispot
- ▬▬▬ Uncontrolled Fire Edge
- - - Hand Line
- R - R - Road as Completed Line
- Fire Area



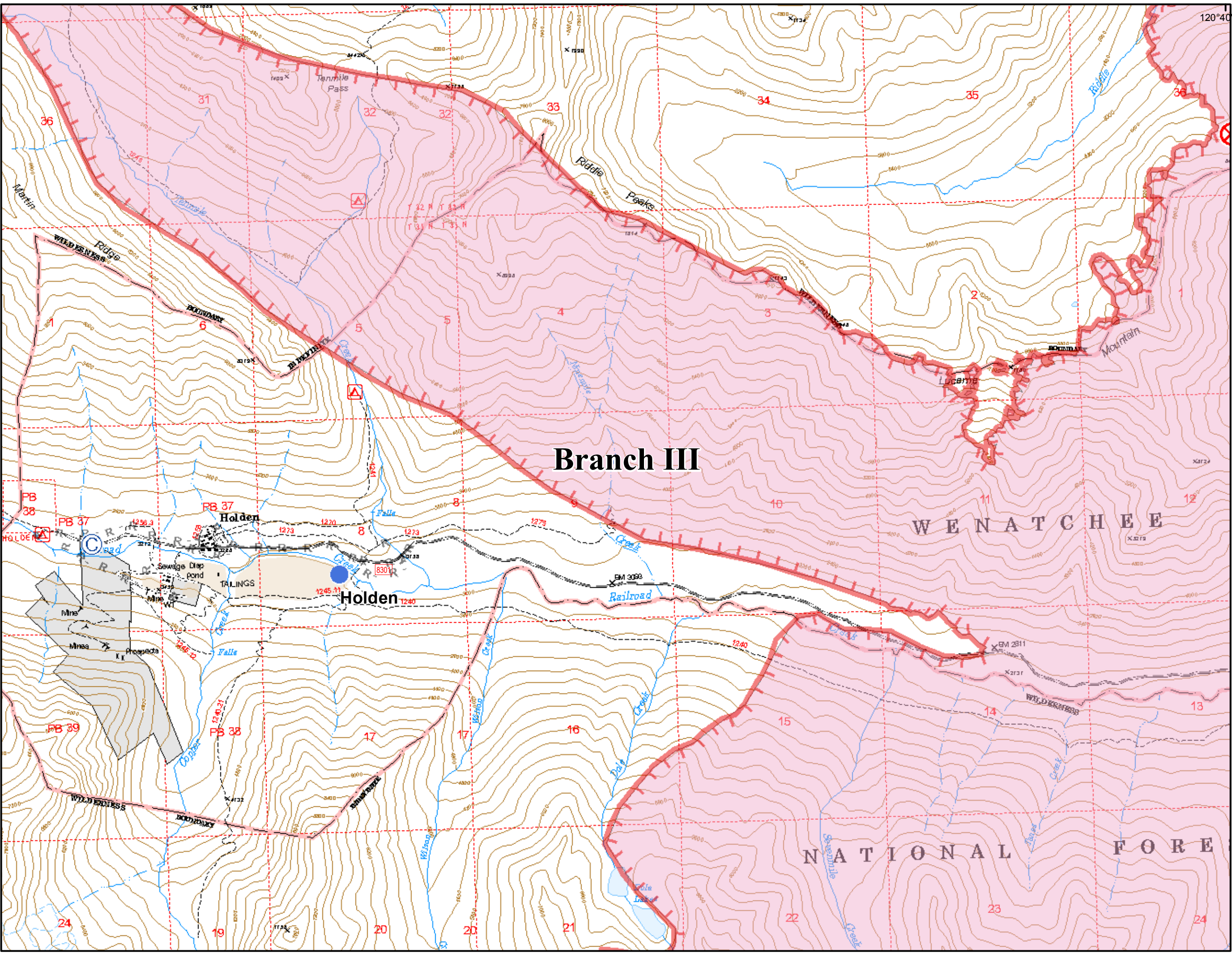
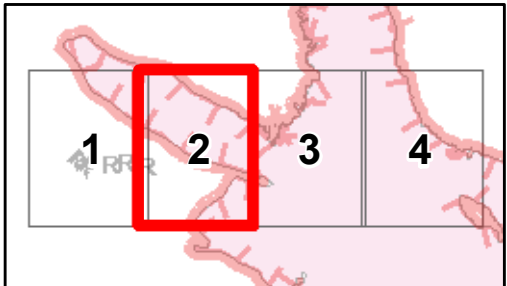
# Wolverine Fire WA-OWF-000287 IAP Map August 11, 2015

0 0.25 0.5  
Miles

## Holden-Lucerne Area Page 2 of 4

Perimeter as of  
August 10, 2015 at 1400  
34,500 acres

- Ⓒ Camp
- ⊗ Fire Origin
- Helispot
- ▬▬▬ Uncontrolled Fire Edge
- - - Hand Line
- . - . Road as Completed Line
- Fire Area

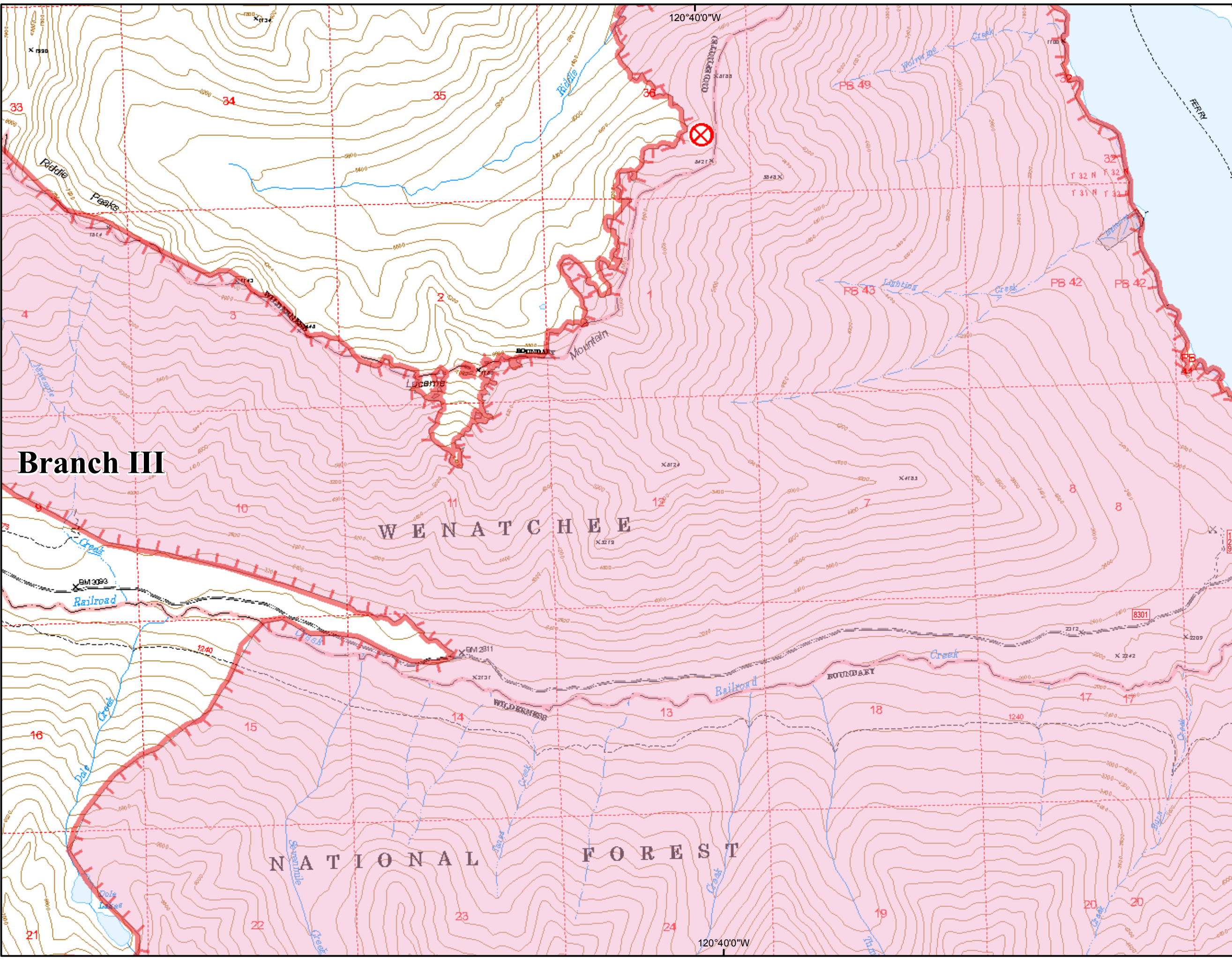


# Wolverine Fire WA-OWF-000287 IAP Map August 11, 2015

0 0.25 0.5  
Miles

## Holden-Lucerne Area Page 3 of 4

Perimeter as of  
August 10, 2015 at 1400  
34,500 acres

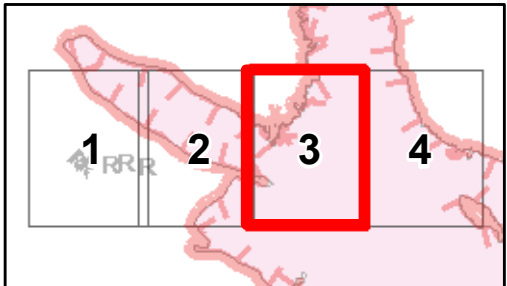


Branch III

WENATCHEE

NATIONAL FOREST

- Fire Origin
- Uncontrolled Fire Edge
- Fire Area










# Wolverine Fire WA-OWF-000287 IAP Map August 11, 2015

0 0.25 0.5 Miles

## Holden-Lucerne Area Page 4 of 4

Perimeter as of  
August 10, 2015 at 1400  
34,500 acres

-  Camp
-  Fire Origin
-  Helispot
-  Mobile Weather Unit
-  Repeater
-  Uncontrolled Fire Edge
-  Fire Area

