

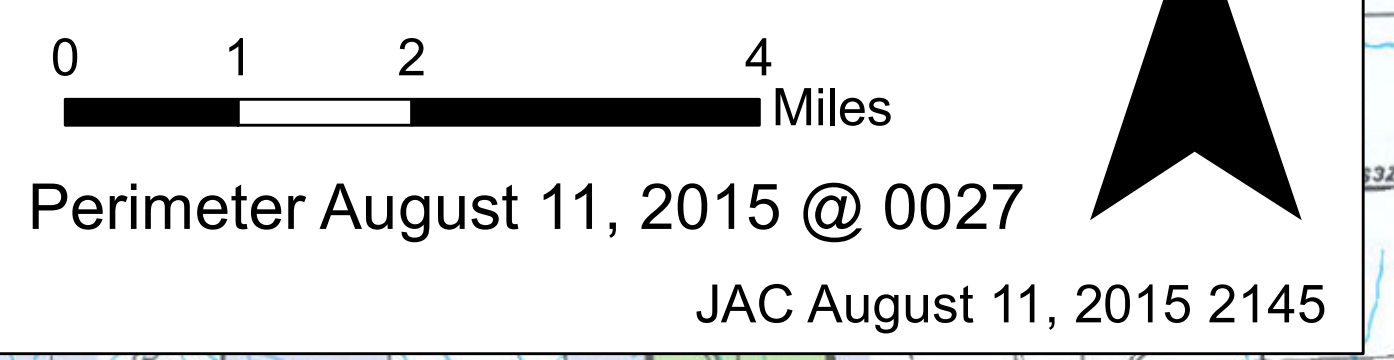
Wolverine Fire

WA-OWF-000287

Briefing Map

August 12, 2015

36,030 Acres



Branch III

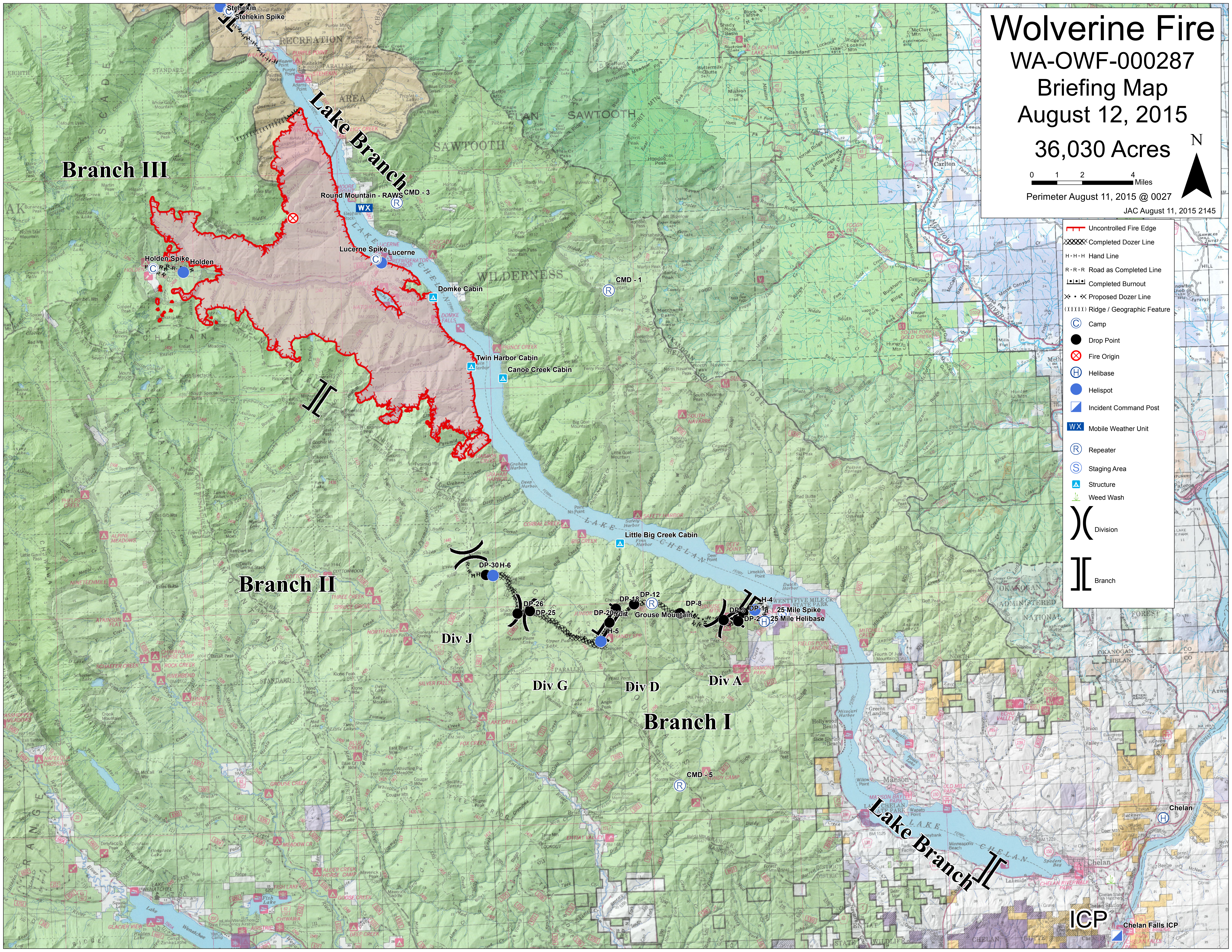
Branch II

Branch I

Lake Branch

Lake Branch II

- Uncontrolled Fire Edge
- Completed Dozer Line
- Hand Line
- Road as Completed Line
- Completed Burnout
- Proposed Dozer Line
- Ridge / Geographic Feature
- Camp
- Drop Point
- Fire Origin
- Helibase
- Helispot
- Incident Command Post
- Mobile Weather Unit
- Repeater
- Staging Area
- Structure
- Weed Wash
- Division
- Branch



ICP Chelan Falls ICP