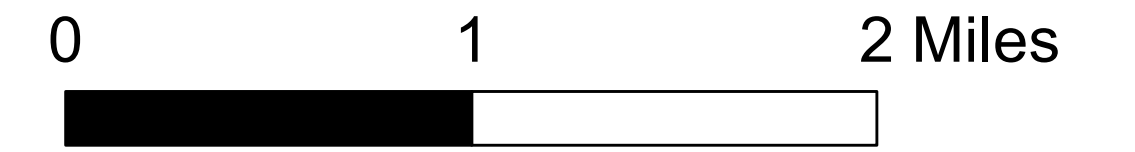


Branch III

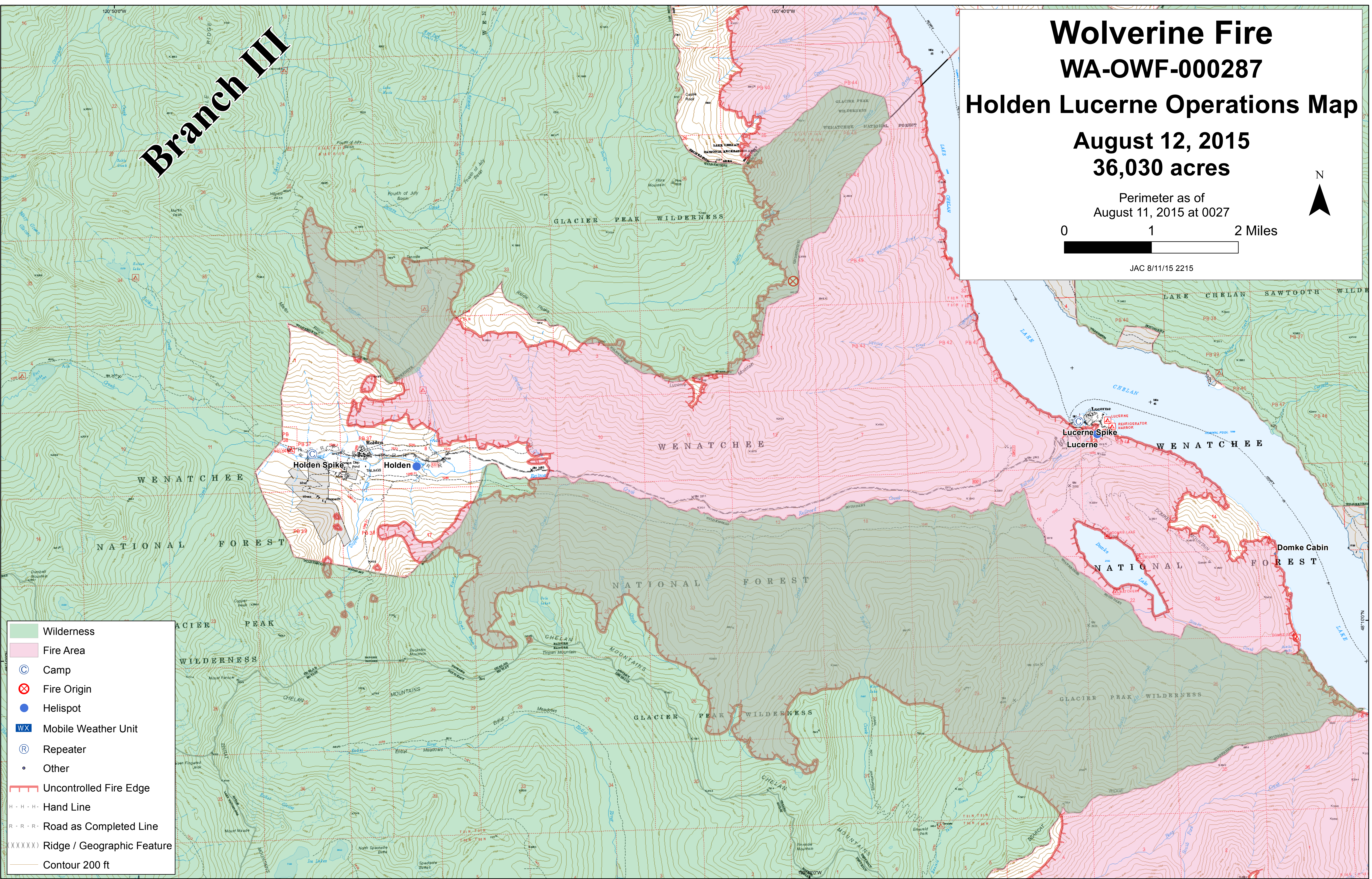
Wolverine Fire WA-OWF-000287 Holden Lucerne Operations Map

**August 12, 2015
36,030 acres**

Perimeter as of
August 11, 2015 at 0027



JAC 8/11/15 2215



- Wilderness
- Fire Area
- Camp
- Fire Origin
- Helispot
- Mobile Weather Unit
- Repeater
- Other
- Uncontrolled Fire Edge
- Hand Line
- Road as Completed Line
- Ridge / Geographic Feature
- Contour 200 ft