

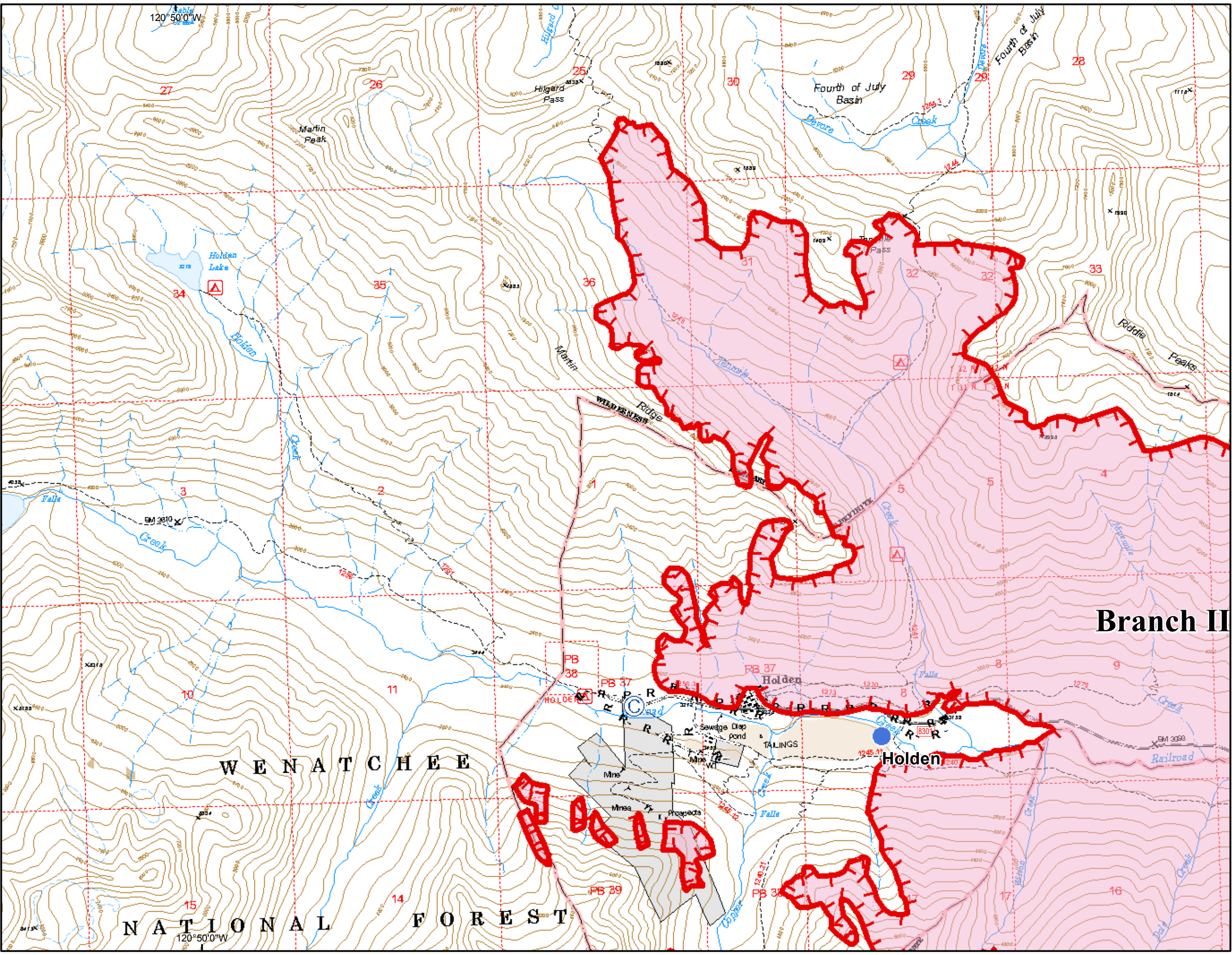
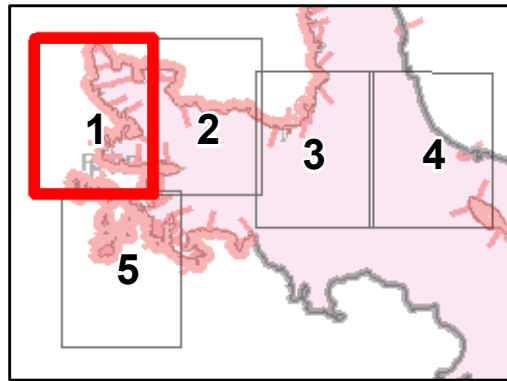
# Wolverine Fire WA-OWF-000287 IAP Map August 14, 2015

0 0.25 0.5 Miles

## Holden-Lucerne Area Page 1 of 5

Perimeter as of  
August 13, 2015 at 0115  
37,792 acres

- Ⓒ Camp
- Helispot
- ▬▬▬ Uncontrolled Fire Edge
- H · H · Hand Line
- R · R · Road as Completed Line
- Fire Area



**Branch II**

WENATCHEE

NATIONAL FOREST



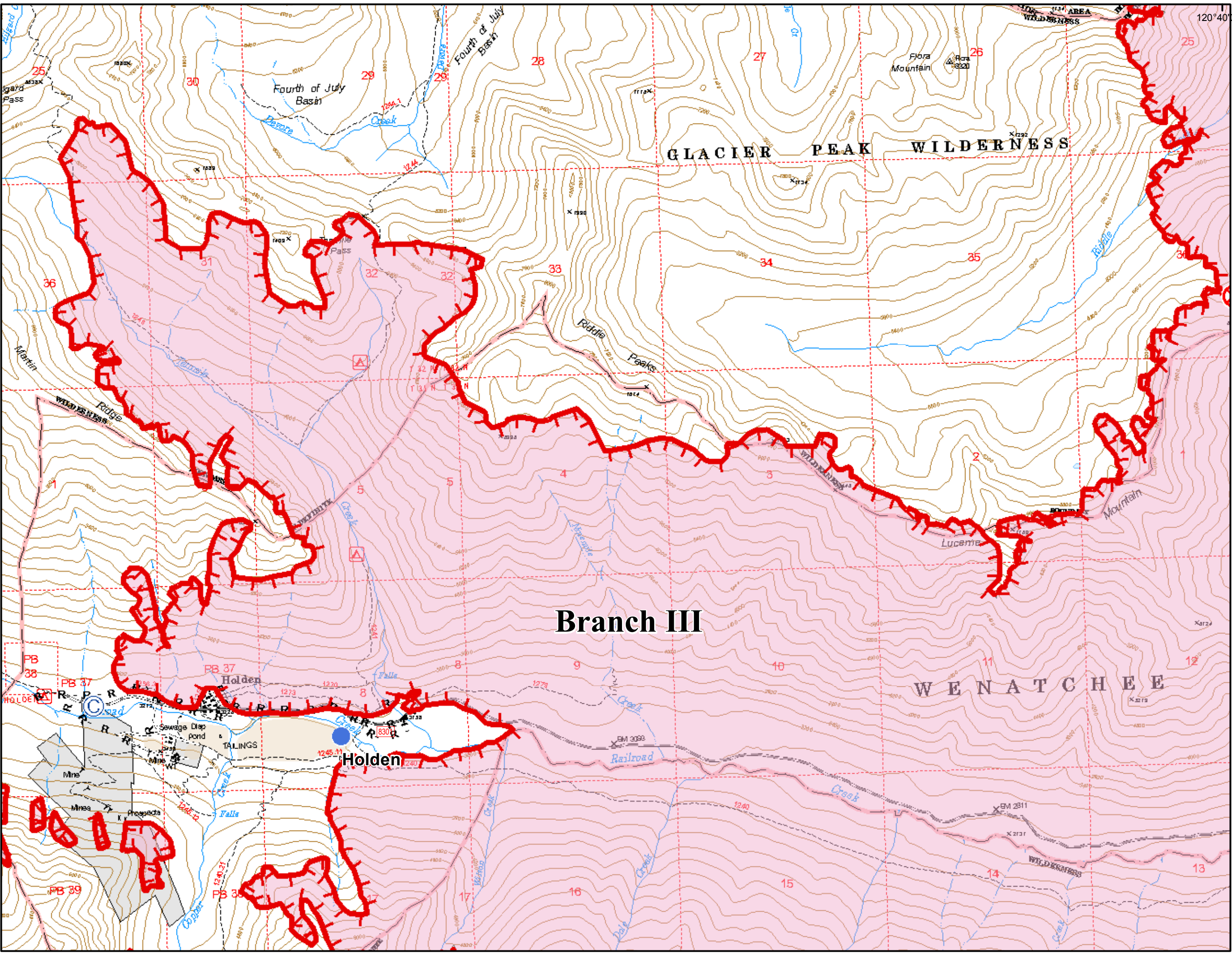
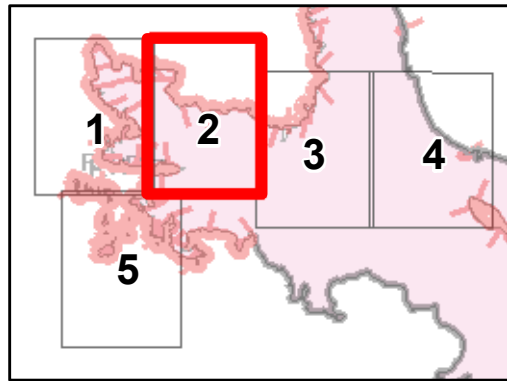
# Wolverine Fire WA-OWF-000287 IAP Map August 14, 2015

0 0.25 0.5  
Miles

## Holden-Lucerne Area Page 2 of 5

Perimeter as of  
August 13, 2015 at 0115  
37,792 acres

- Ⓒ Camp
- ⊗ Fire Origin
- Helispot
- ▬▬▬ Uncontrolled Fire Edge
- H · H · Hand Line
- R · R · Road as Completed Line
- Fire Area





# Wolverine Fire WA-OWF-000287 IAP Map August 14, 2015

0 0.25 0.5  
Miles





## Holden-Lucerne Area Page 3 of 5

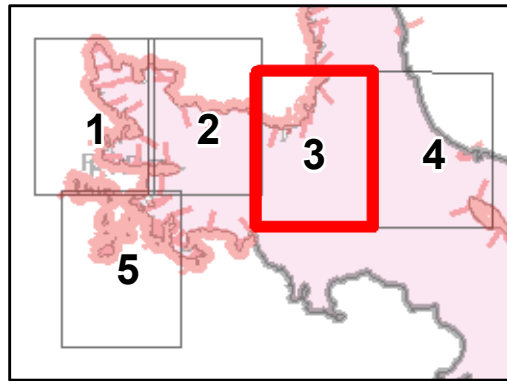
Perimeter as of  
August 13, 2015 at 0115  
37,792 acres

Branch III

WENATCHEE

NATIONAL FOREST

-  Fire Origin
-  Uncontrolled Fire Edge
-  Completed Line
-  Fire Area













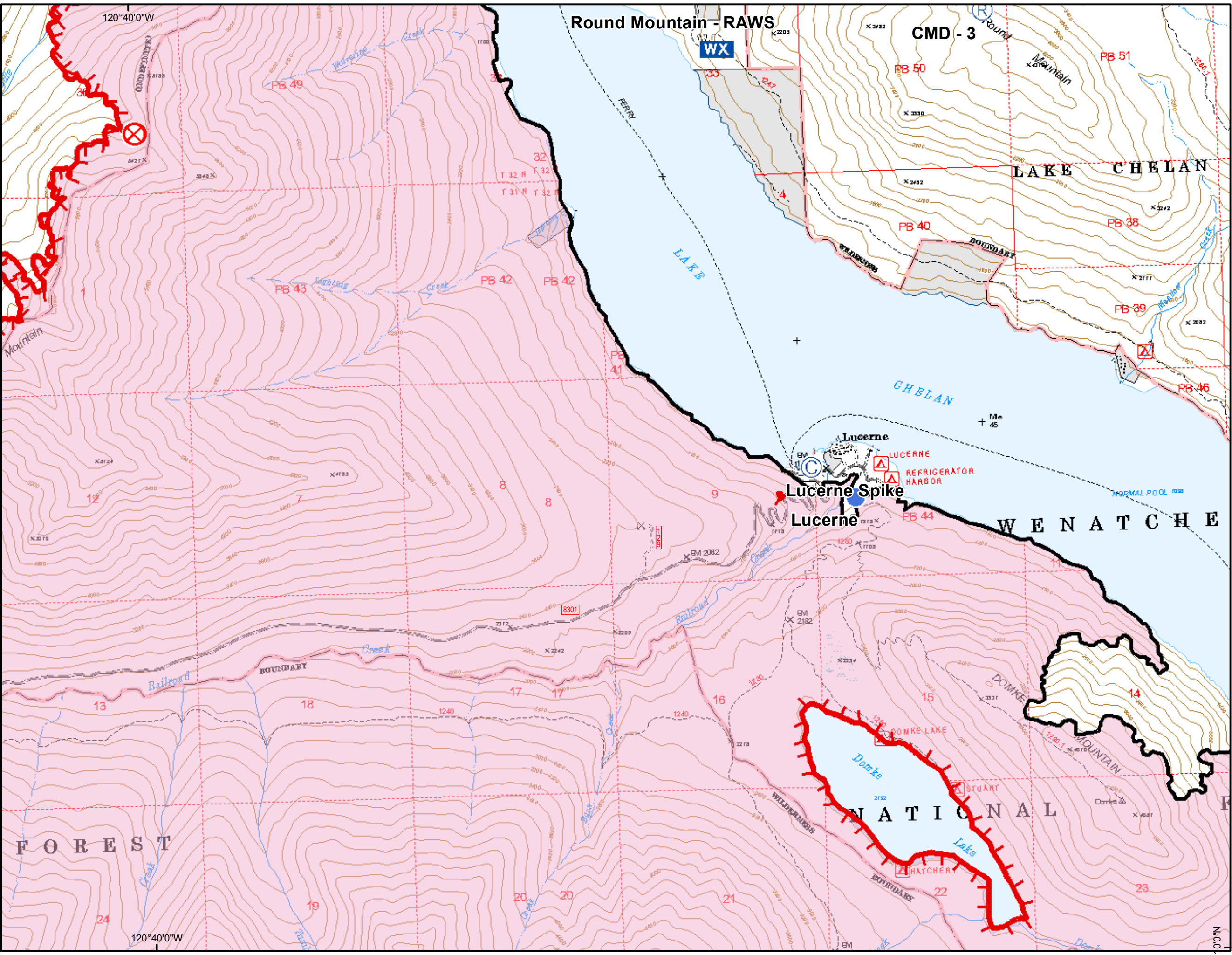
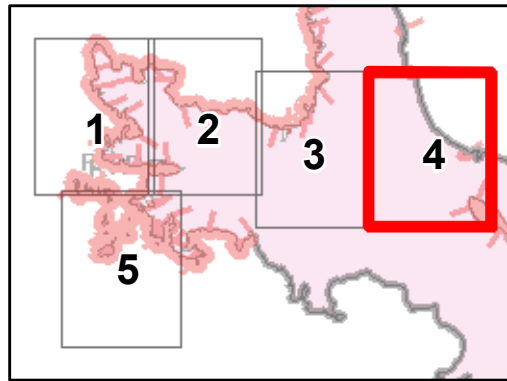
# Wolverine Fire WA-OWF-000287 IAP Map August 14, 2015

0 0.25 0.5 Miles

## Holden-Lucerne Area Page 4 of 5

Perimeter as of  
August 13, 2015 at 0115  
37,792 acres

-  Camp
-  Fire Origin
-  Helispot
-  Mobile Weather Unit
-  Repeater
-  Uncontrolled Fire Edge
-  Completed Line
-  Fire Area





# Wolverine Fire WA-OWF-000287 IAP Map August 14, 2015

0 0.25 0.5  
Miles

## Holden-Lucerne Area Page 5 of 5

Perimeter as of  
August 13, 2015 at 0115  
37,792 acres

- Helispot
- ▬▬▬ Uncontrolled Fire Edge
- · - · - Road as Completed Line
- Fire Area

