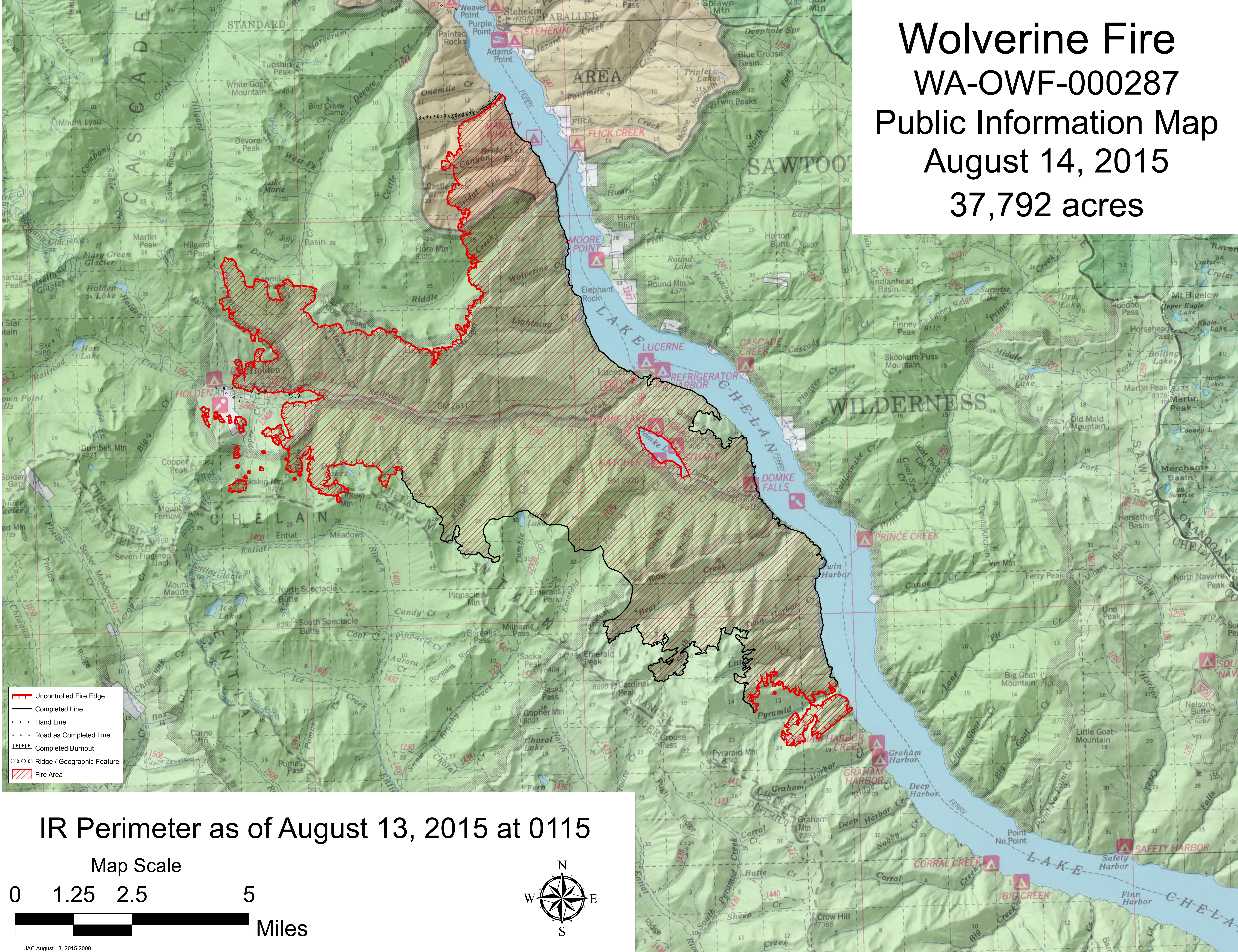


Wolverine Fire WA-OWF-000287 Public Information Map August 14, 2015 37,792 acres



- Uncontrolled Fire Edge
- Completed Line
- Hand Line
- Road as Completed Line
- Completed Burnout
- Ridge / Geographic Feature
- Fire Area

IR Perimeter as of August 13, 2015 at 0115

Map Scale

