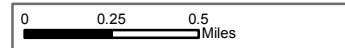


Wolverine IAP
Operational Period 9/06/2015

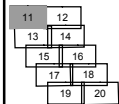
GIS Acres 72,994
9/03/2015 1510
Map Created 9/5/2015 18:22:51 PM RDC



- Helispot
- Planned Fire Line
- Uncontrolled Fire Edge

Neighboring Pages

West Page North Page East Page 12
Douth Page 13



Page 11
X Division
I Branch



Div B

Wolverine Fire
65292 Acres

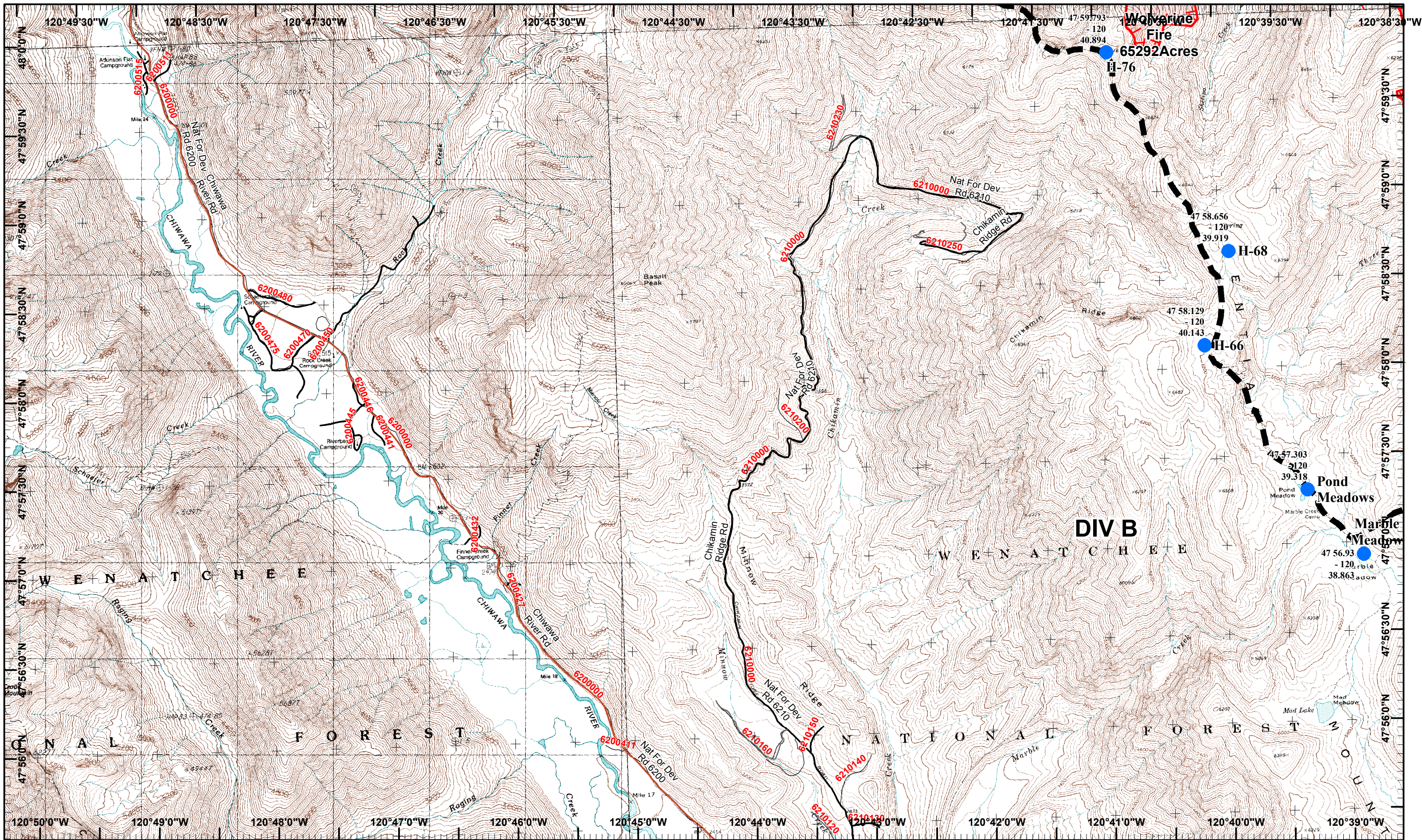
NATIONAL FOREST

NATIONAL FOREST

WOLVERINE MOUNTAINS

WOLVERINE MOUNTAINS

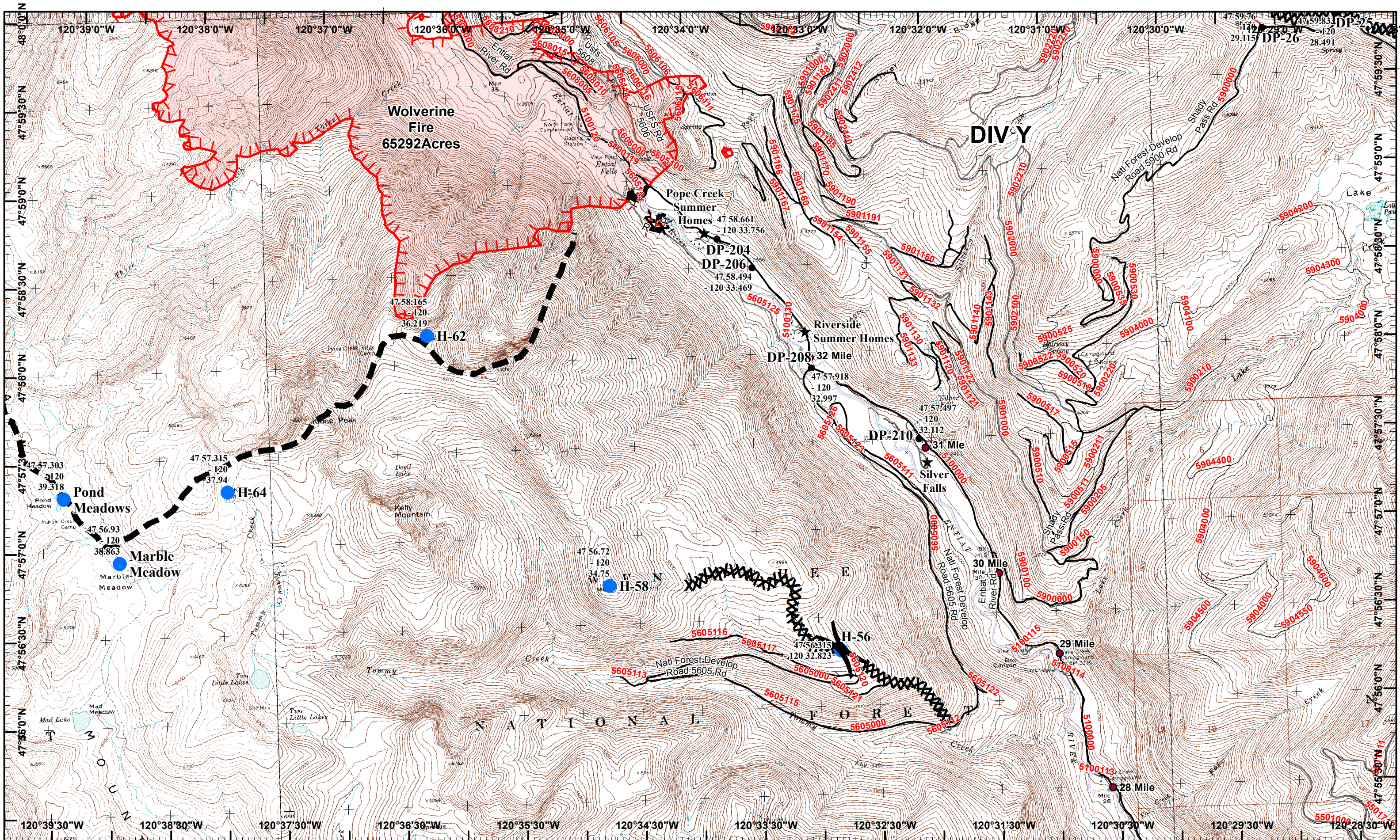
H-76
47.59793
-120
40.894



- Helispot
- Planned Fire Line
- Uncontrolled Fire Edge

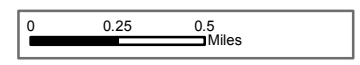
11	12
13	14
15	16
17	18
19	20





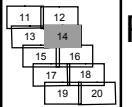
Wolverine IAP
Operational Period 9/06/2015

GIS Acres 72,994
9/03/2015 1510
Map Created 9/5/2015 18:23:50 PM RDC



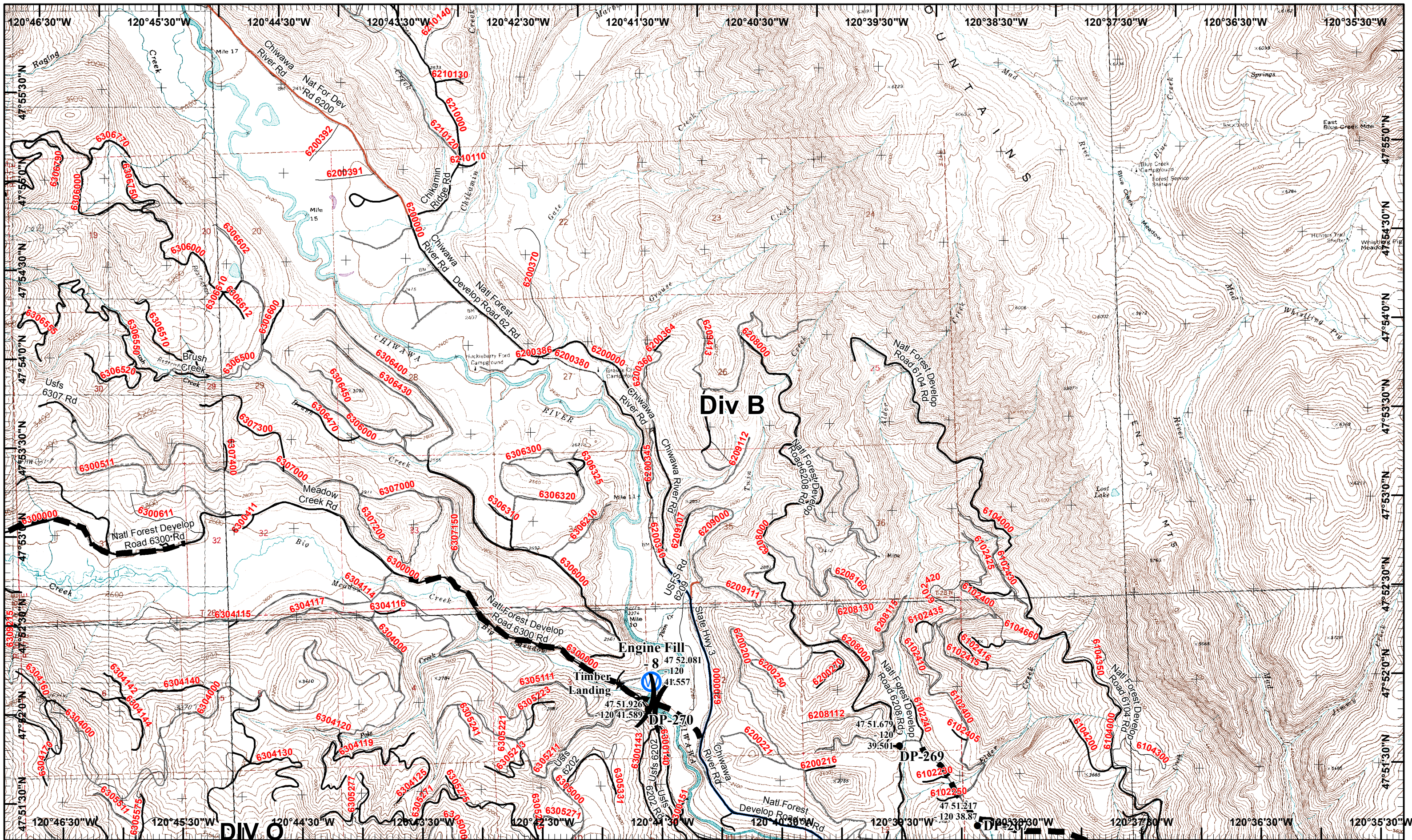
- Helispot
- ★ Other
- R Road as Completed Line
- Completed Line
- Drop Point
- XXXX Completed Dozer Line
- Planned Fire Line
- H Hand Line
- Uncontrolled Fire Edge

Neighboring Pages
West Page 13 North Page 12
Douth Page 16 East Page



Page 14
X Division
I Branch



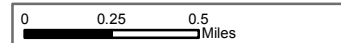


Wolverine IAP

Operational Period 9/06/2015

GIS Acres 72,994
9/03/2015 1510

Map Created 9/5/2015 18:24:10 PM RDC



Water Source

★ Other

■ Planned Fire Line



Drop Point

Neighboring Pages

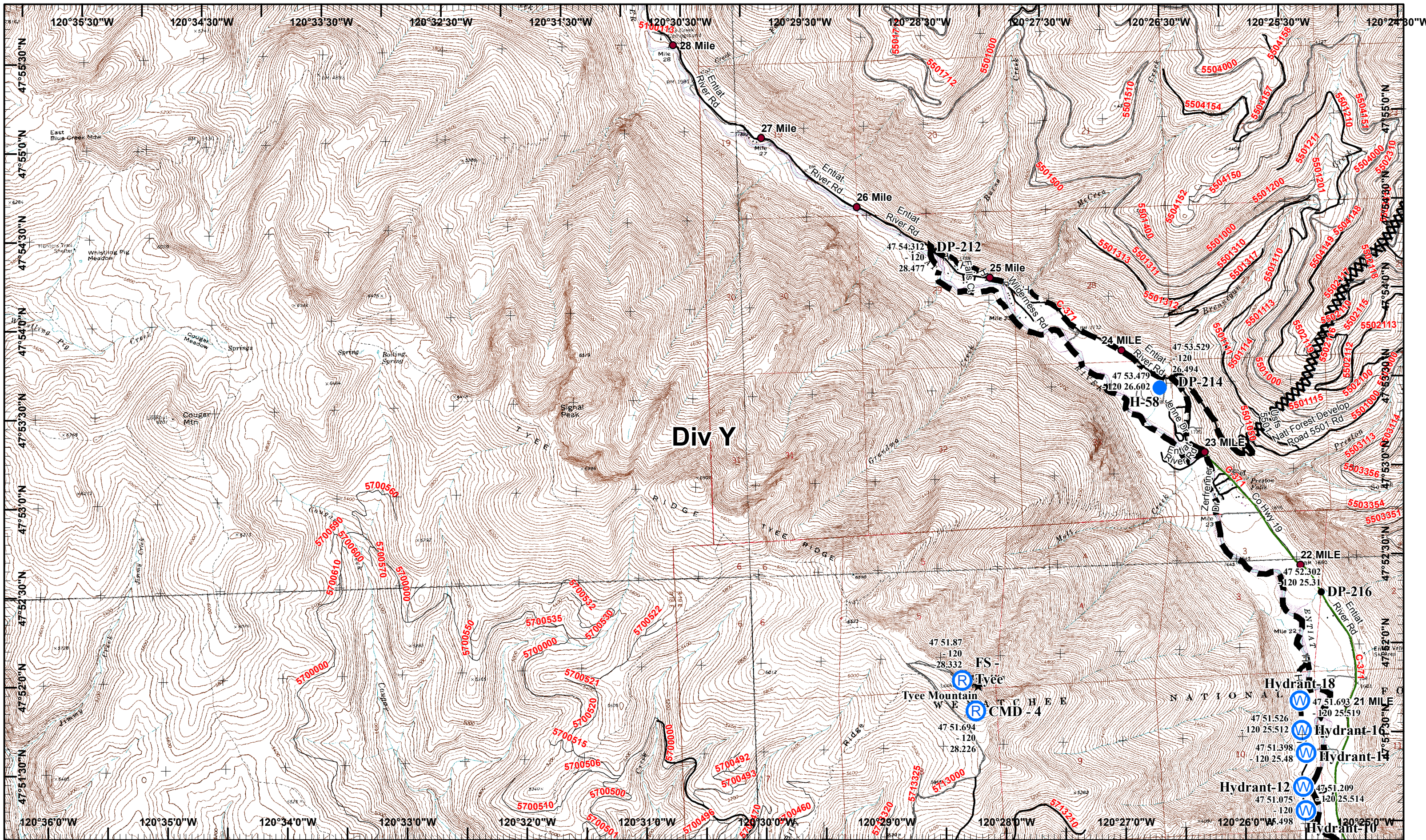
West Page North Page 13 East Page 16
Douth Page 17

11	12
13	14
15	16
17	18
19	20

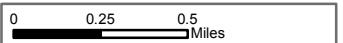
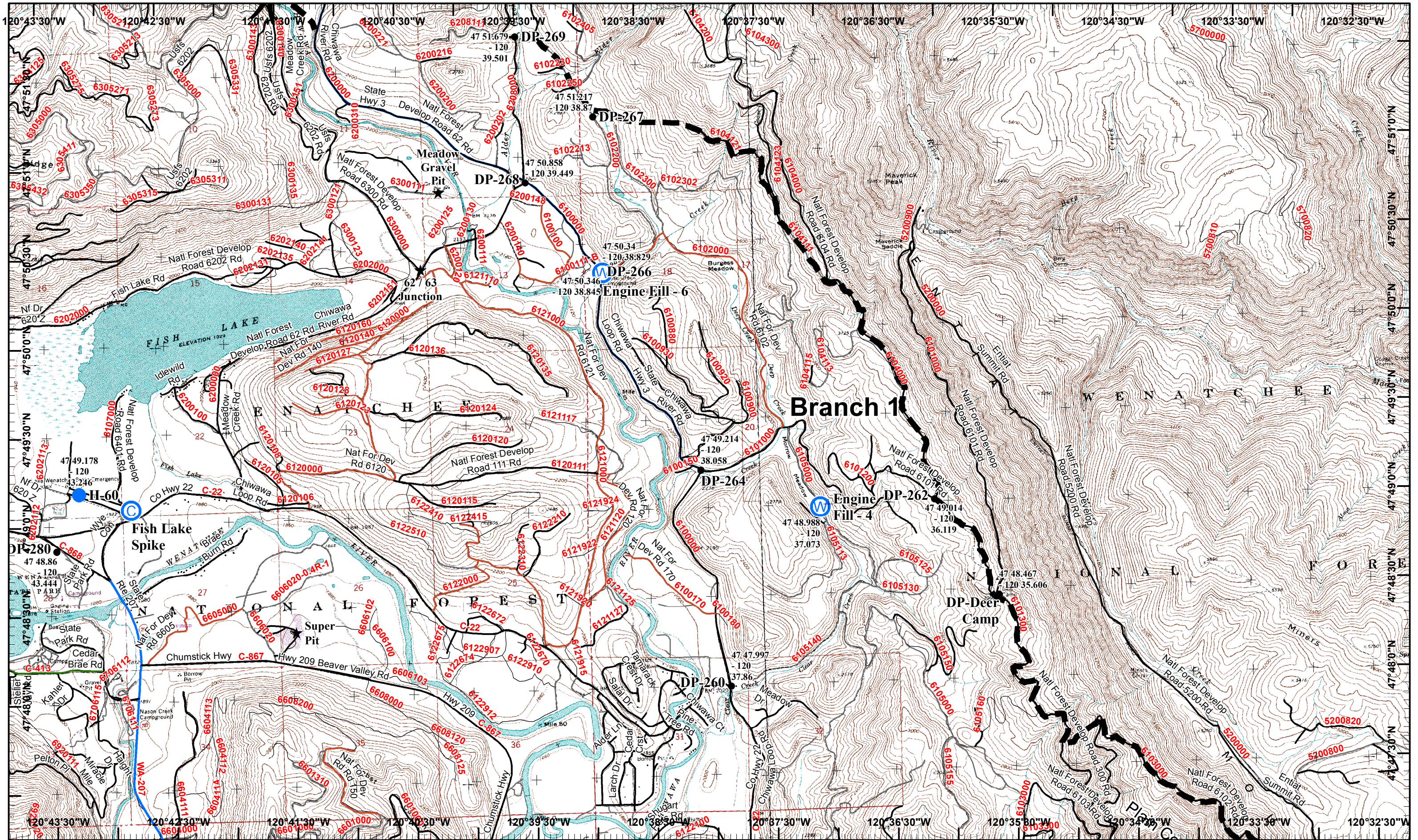
Page 15

X Division
I Branch





- Helispot
- W Water Source
- R Repeater
- ★ Other
- Planned Fire Line
- Hand Line
- Drop Point
- XXXX Completed Dozer Line



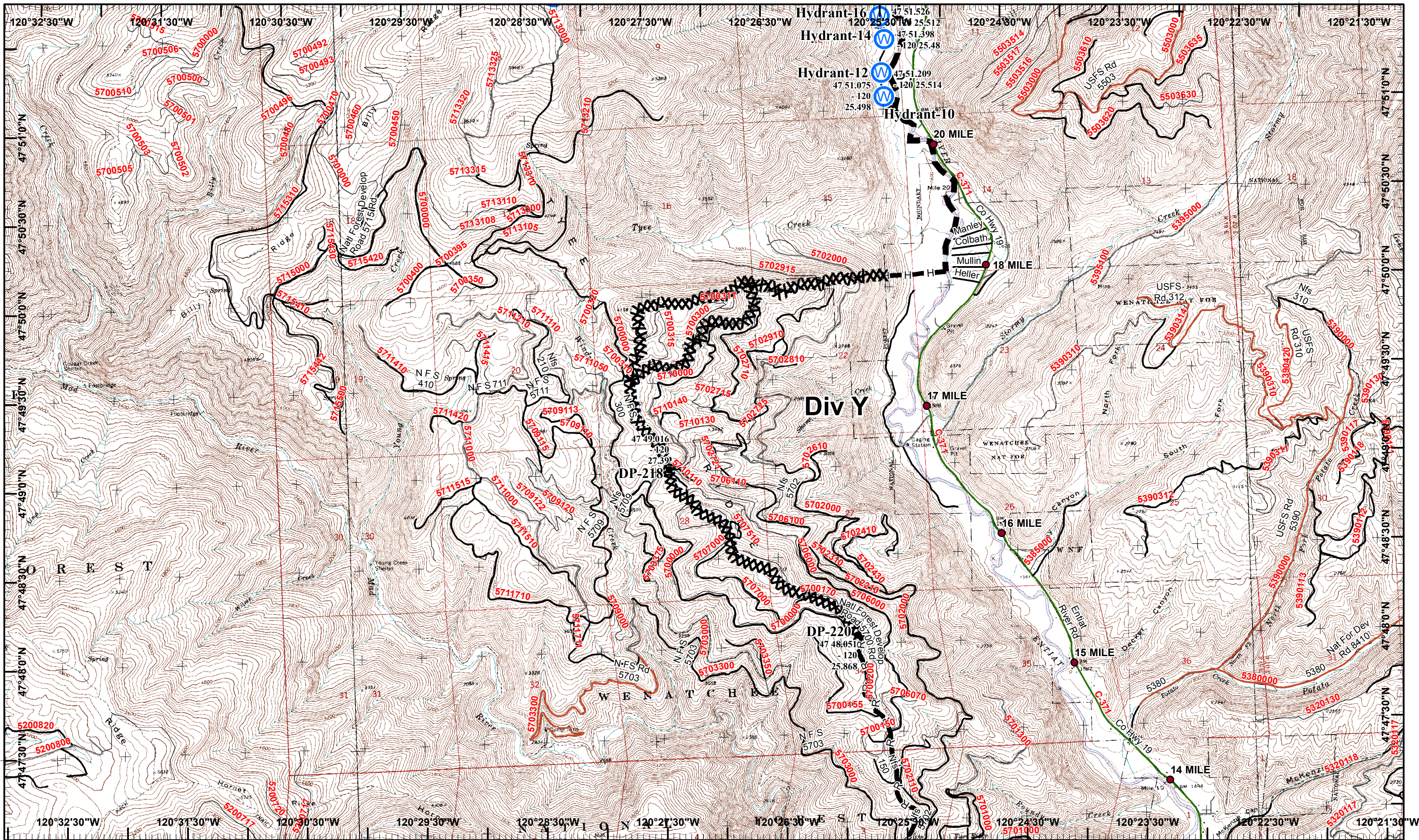
- Helispot
- W Water Source
- C Camp
- Planned Fire Line
- Drop Point
- ★ Other

Neighboring Pages

West Page	North Page 15	East Page 18
	Douth Page 19	

Page 17

X Division
I Branch

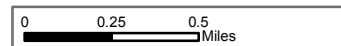


Wolverine IAP

Operational Period 9/06/2015

GIS Acres 72,994
9/03/2015 1510

Map Created 9/5/2015 18:24:58 PM RDC



Water Source



Repeater



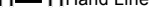
Completed Dozer Line



Planned Fire Line



Drop Point



Road as Completed Line



Hand Line

Neighboring Pages

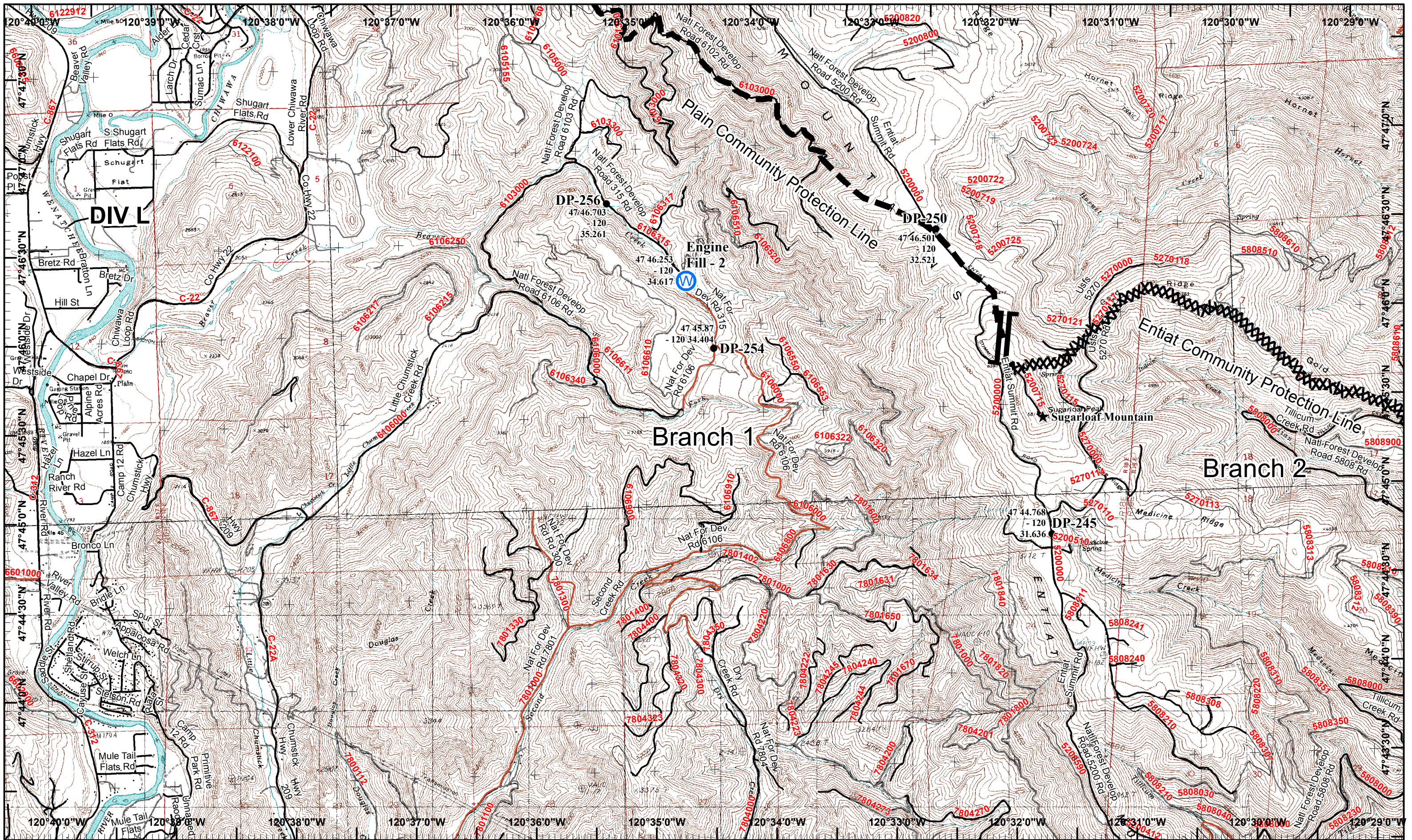
West Page 17 North Page 16
Douth Page 20 East Page

11	12
13	14
15	16
17	18
19	20

Page 18

X Division
I Branch



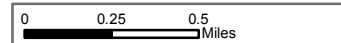


Wolverine IAP

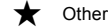
Operational Period 9/06/2015

GIS Acres 72,994
9/03/2015 1510

Map Created 9/5/2015 18:25:13 PM RDC



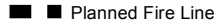
Water Source



Other



Completed Dozer Line



Planned Fire Line



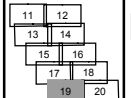
Hand Line



Drop Point

Neighboring Pages

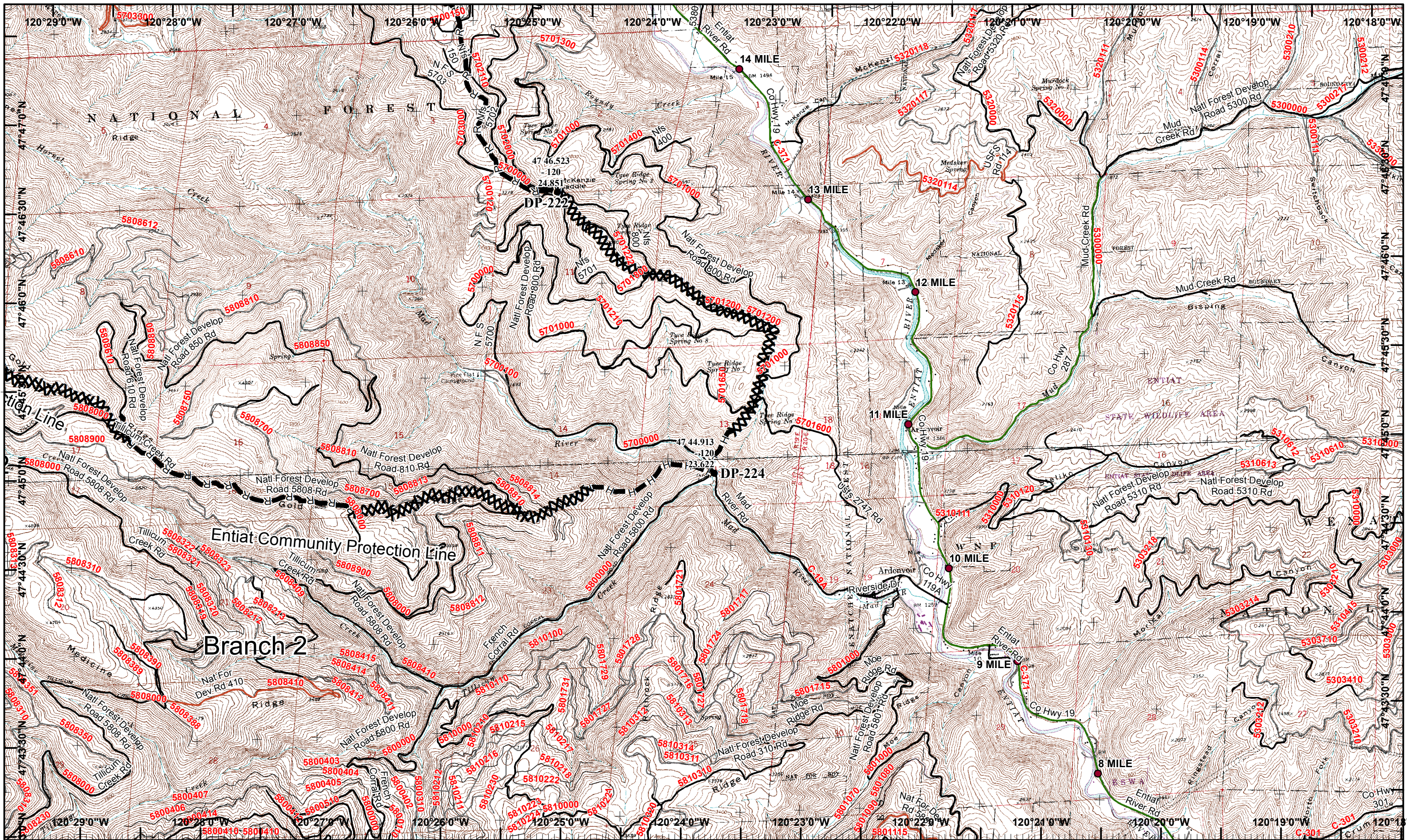
West Page North Page 17
Douth Page East Page 20



Page 19

X Division
I Branch



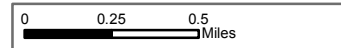


Wolverine IAP

Operational Period 9/06/2015

GIS Acres 72,994
9/03/2015 1510

Map Created 9/5/2015 18:25:29 PM RDC



- Drop Point
- R Road as Completed Line
- XXXX Completed Dozer Line
- H Hand Line

Neighboring Pages

West Page 19 North Page 18
Douth Page East Page

11	12
13	14
15	16
17	18
19	20

Page 20

X Division
I Branch

