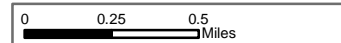


**Wolverine IAP**

Operational Period 9/06/2015

GIS Acres 72,994  
9/03/2015 1510

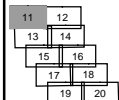
Map Created 9/5/2015 18:22:51 PM RDC



- Helispot
- Planned Fire Line
- Uncontrolled Fire Edge

Neighboring Pages

West Page North Page East Page 12  
Douth Page 13



Page 11

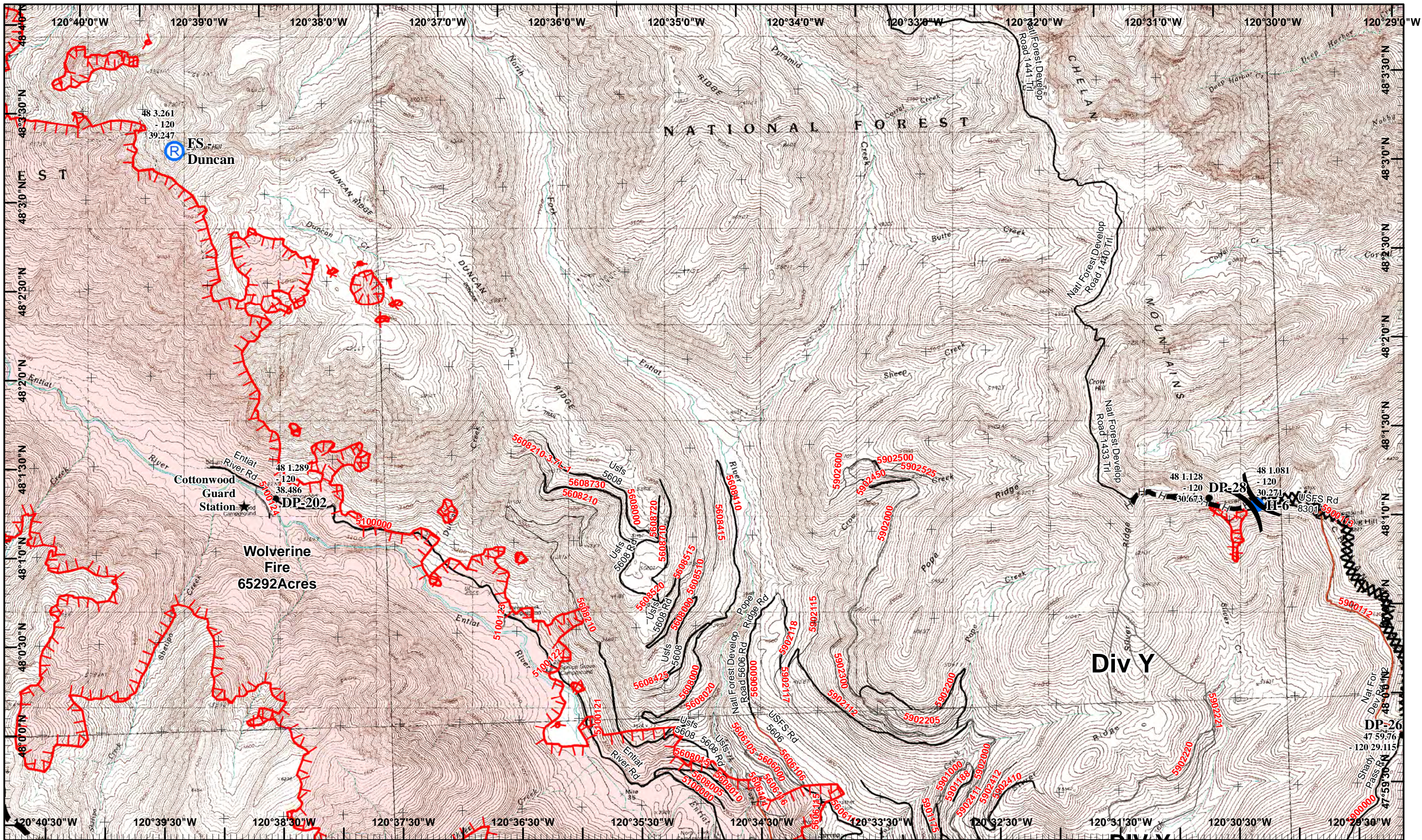
X Division  
I Branch



**Div B**

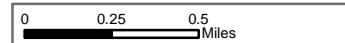
**Wolverine Fire**  
65292 Acres

47.59793  
- 120  
40.894  
**H-76**



**Wolverine IAP**  
Operational Period 9/06/2015

GIS Acres 72,994  
9/03/2015 1510  
Map Created 9/5/2015 18:23:12 PM RDC



- Helispot
- Ⓡ Repeater
- Drop Point
- ★ Other
- XXXX Completed Dozer Line
- Planned Fire Line
- H Hand Line
- ▬ Uncontrolled Fire Edge

Neighboring Pages

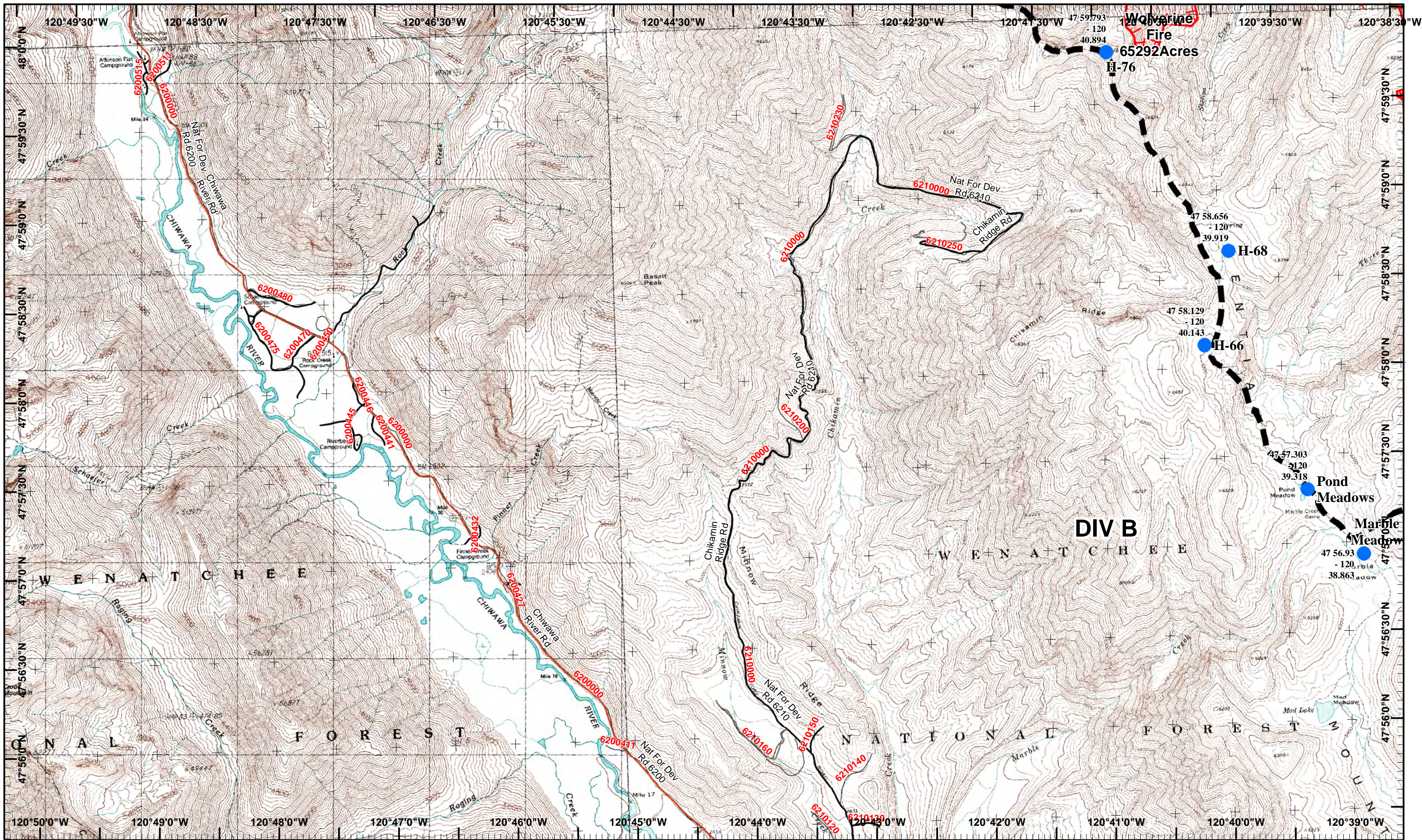
West Page 11    North Page  
Douth Page 14    East Page

11	12
13	14
15	16
17	18
19	20

Page 12

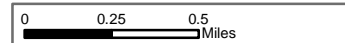
)( Division  
|| Branch





**Wolverine IAP**  
Operational Period 9/06/2015

GIS Acres 72,994  
9/03/2015 1510  
Map Created 9/5/2015 18:23:34 PM RDC



- Helispot
- Planned Fire Line
- Uncontrolled Fire Edge

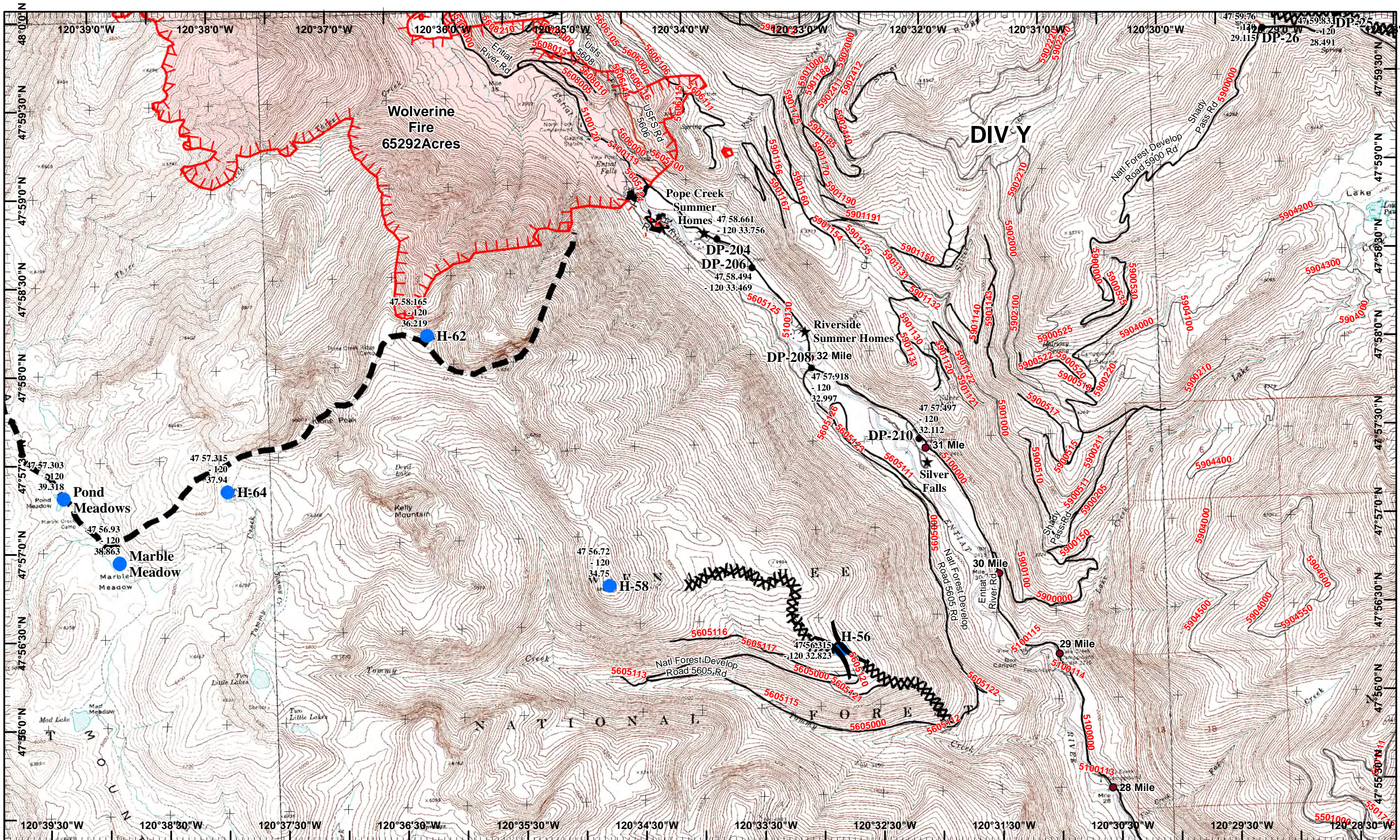
Neighboring Pages

West Page    North Page 11    East Page 14  
Douth Page 15

11	12
13	14
15	16
17	18
19	20

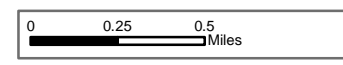
Page 13  
X Division  
I Branch





**Wolverine IAP**  
Operational Period 9/06/2015

GIS Acres 72,994  
9/03/2015 1510  
Map Created 9/5/2015 18:23:50 PM RDC



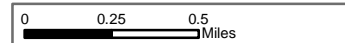
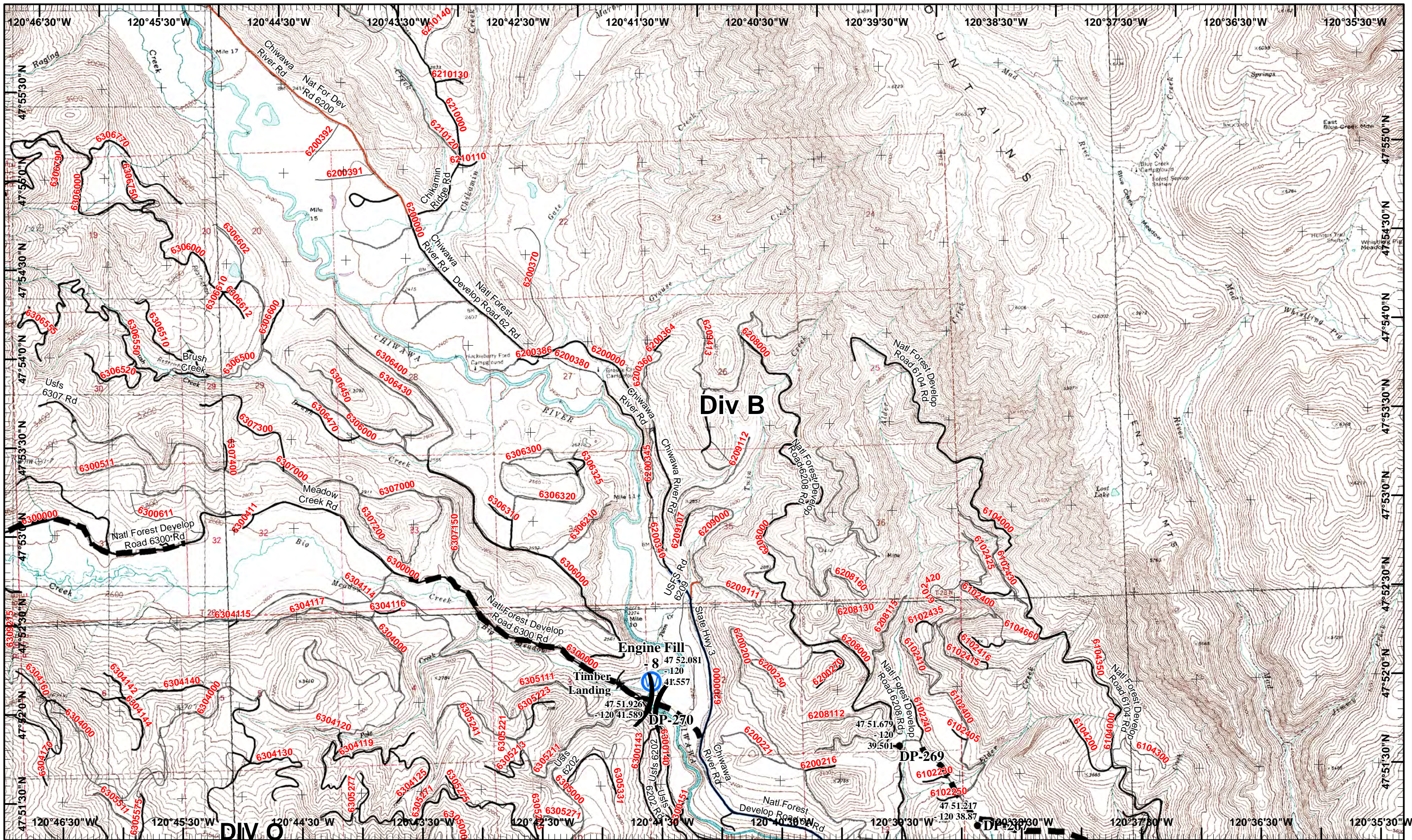
- Helispot
- ★ Other
- Drop Point
- R Road as Completed Line
- Completed Line
- Planned Fire Line
- Uncontrolled Fire Edge
- XXXX Completed Dozer Line
- H Hand Line

Neighboring Pages  
West Page 13 North Page 12 East Page  
Douth Page 16

11	12
13	14
15	16
17	18
19	20

Page 14  
Division  
Branch





Water Source

★ Other

■ Planned Fire Line



Drop Point

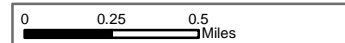
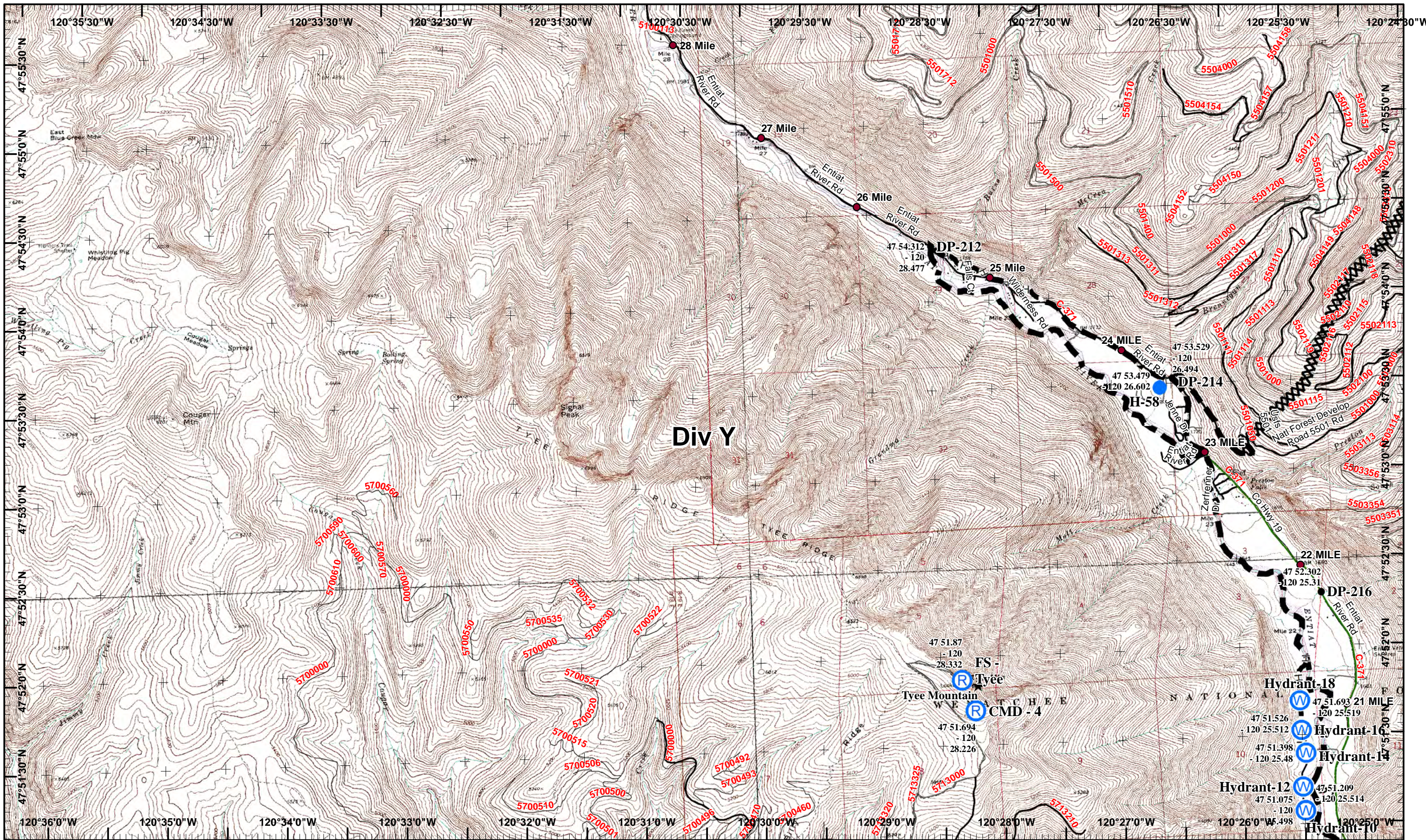
Neighboring Pages

West Page North Page 13 East Page 16  
Douth Page 17

11	12
13	14
15	16
17	18
19	20

Page 15  
)( Division  
|| Branch





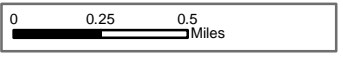
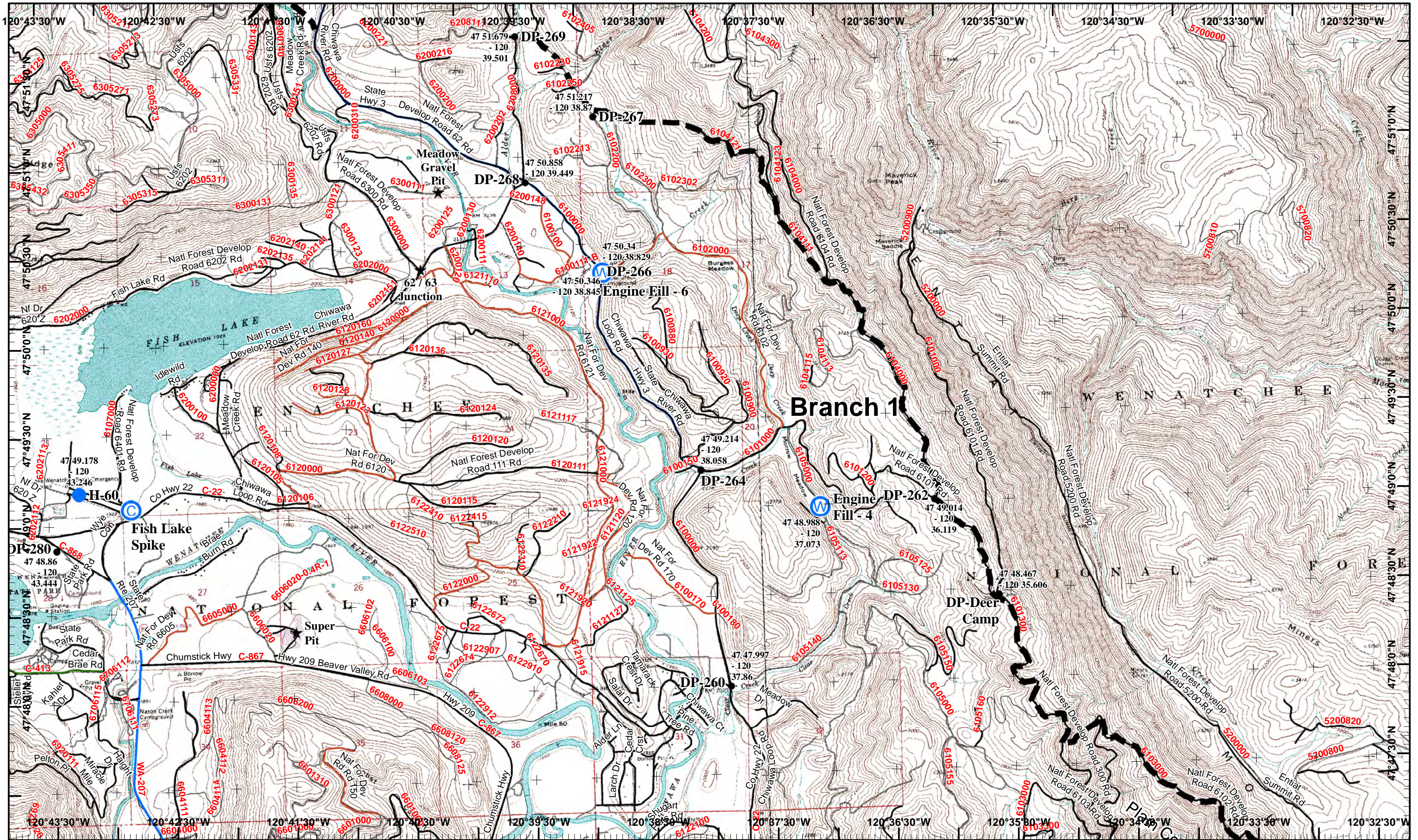
- Helispot
- W Water Source
- R Repeater
- Drop Point
- ★ Other
- XXXX Completed Dozer Line
- Planned Fire Line
- Hand Line

Neighboring Pages

West Page 15 North Page 14  
Douth Page 18 East Page

11	12
13	14
15	16
17	18
19	20

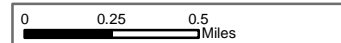
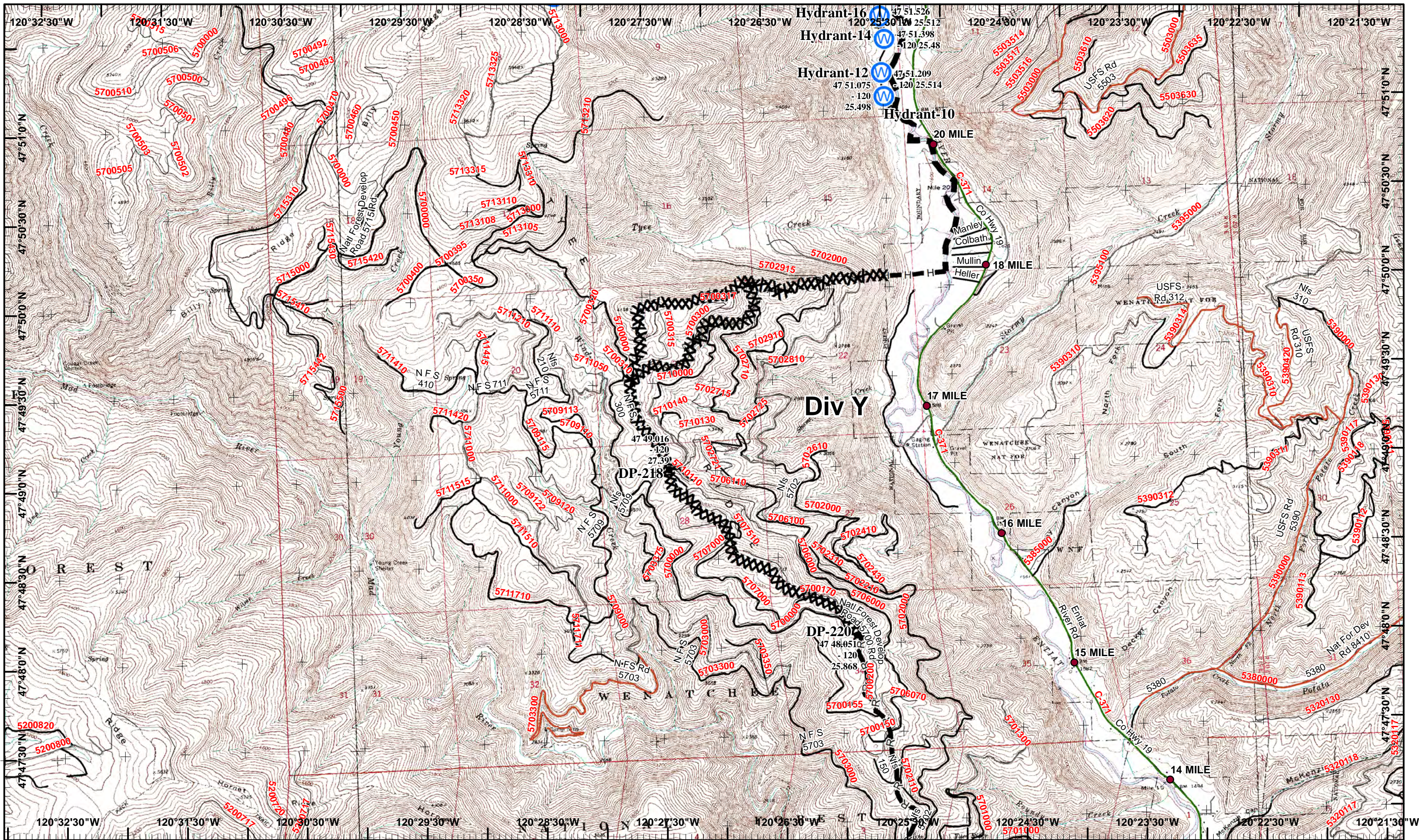




- Helispot
- W Water Source
- C Camp
- Planned Fire Line
- Drop Point
- ★ Other

Neighboring Pages

West Page	North Page 15	East Page 18
	South Page 19	



Water Source



Repeater



Completed Dozer Line



Planned Fire Line



Drop Point



Road as Completed Line



Hand Line

Neighboring Pages

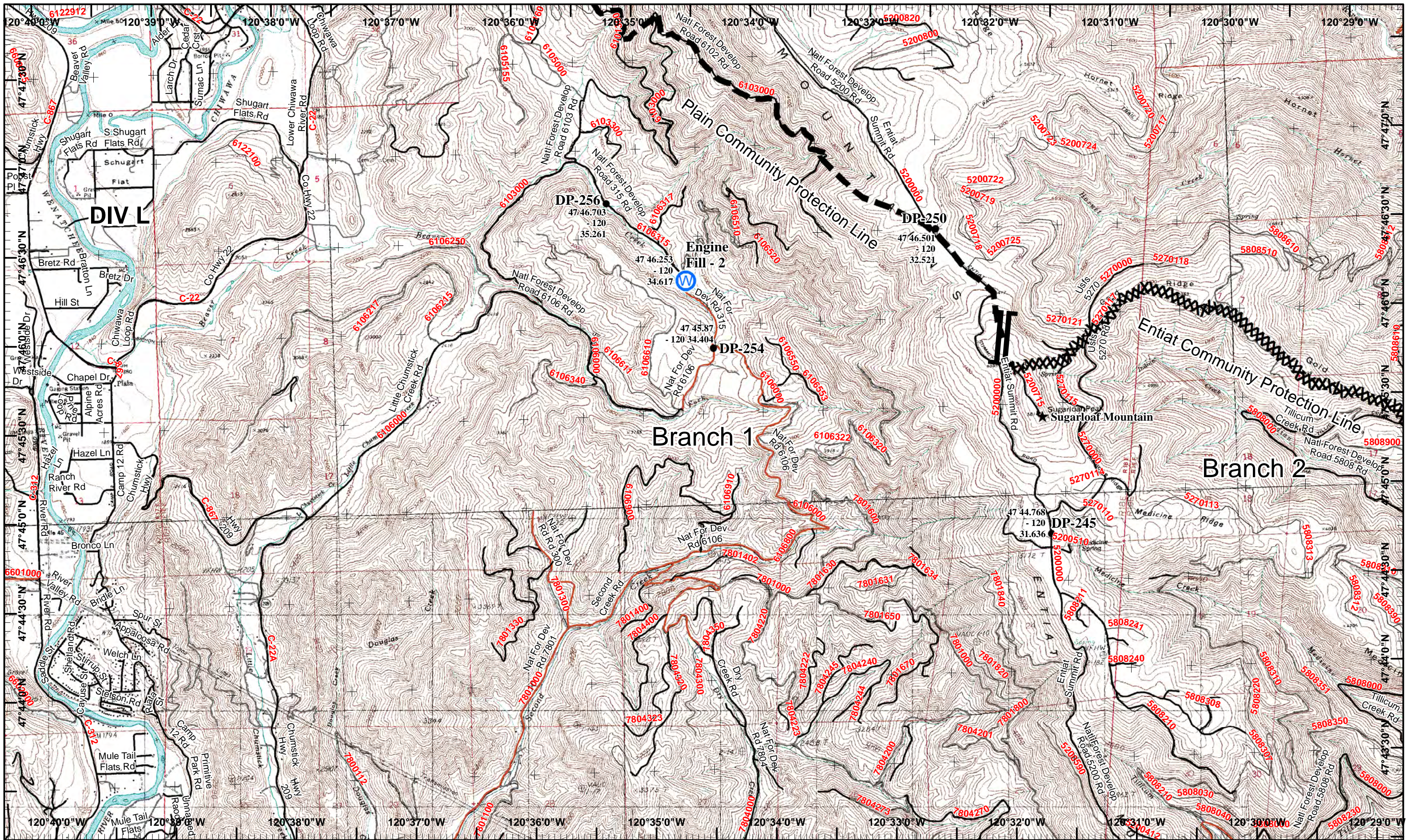
West Page 17 North Page 16  
Douth Page 20 East Page

11	12
13	14
15	16
17	18
19	20

Page 18  
X Division  
I Branch





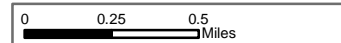


**Wolverine IAP**

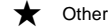
Operational Period 9/06/2015

GIS Acres 72,994  
9/03/2015 1510

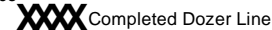
Map Created 9/5/2015 18:25:13 PM RDC



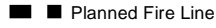
Water Source



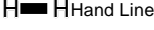
Other



Completed Dozer Line



Planned Fire Line



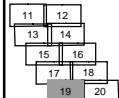
Hand Line



Drop Point

Neighboring Pages

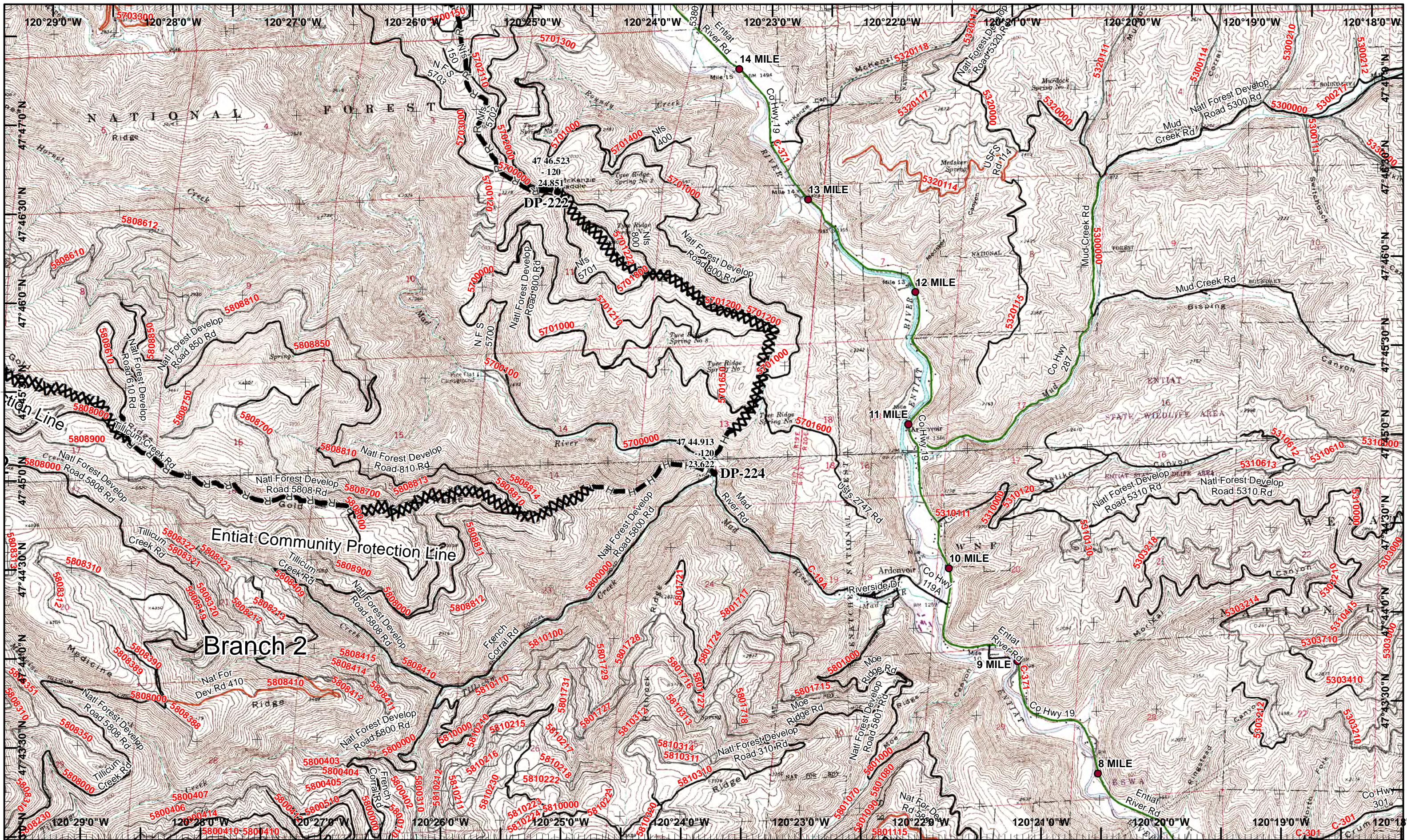
West Page North Page 17  
Douth Page East Page 20



Page 19

X Division  
I Branch



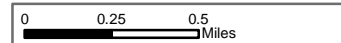


**Wolverine IAP**

Operational Period 9/06/2015

GIS Acres 72,994  
9/03/2015 1510

Map Created 9/5/2015 18:25:29 PM RDC



- Drop Point
- ▬▬▬ Road as Completed Line
- XXXX Completed Dozer Line
- ▬▬ Hand Line

Neighboring Pages

West Page 19 North Page 18  
Douth Page East Page

11	12
13	14
15	16
17	18
19	20

Page 20

) Division  
| Branch

