

Repair Plan Map

Repair Area: First Creek Fire

Operational Period 09/11/2015

Note: Repair items subject to modifications.

1
Miles



Repair Strategy: First Creek Fire

See strategy summary for more detail

0. First Creek Dozer Line
1. First Creek Hand Line (DNR)
2. Handline First Creek 971 Junctions
3. Handline First Creek 971 Junctions
4. Handline along Lakeshore
5. Handline along Lakeshore
6. Handline at Granite Slide
7. Dozerline at Shrine
8. Handline at Mission Harbor
9. Dozerline at Gravel Pit
10. Handline at Morning Sun Drive
11. Dozerline at Morning Sun Drive
12. Handline at 16445
13. Handline at Barnett
14. Handline Garage
15. Handline Piles
16. Dozerline Barnett
17. Dozerline Hale
18. Dozerline Gulf
19. Road 125
20. Dozerline Slide Ridge
21. Dozerline near Bearer
22. Dozerline near Safety Zone
23. Dozerline Granite 2
24. Handline and Cold Trail
25. Dozerline Granite Falls
26. Handline 2200
27. Granite Falls Road
28. 125 Road

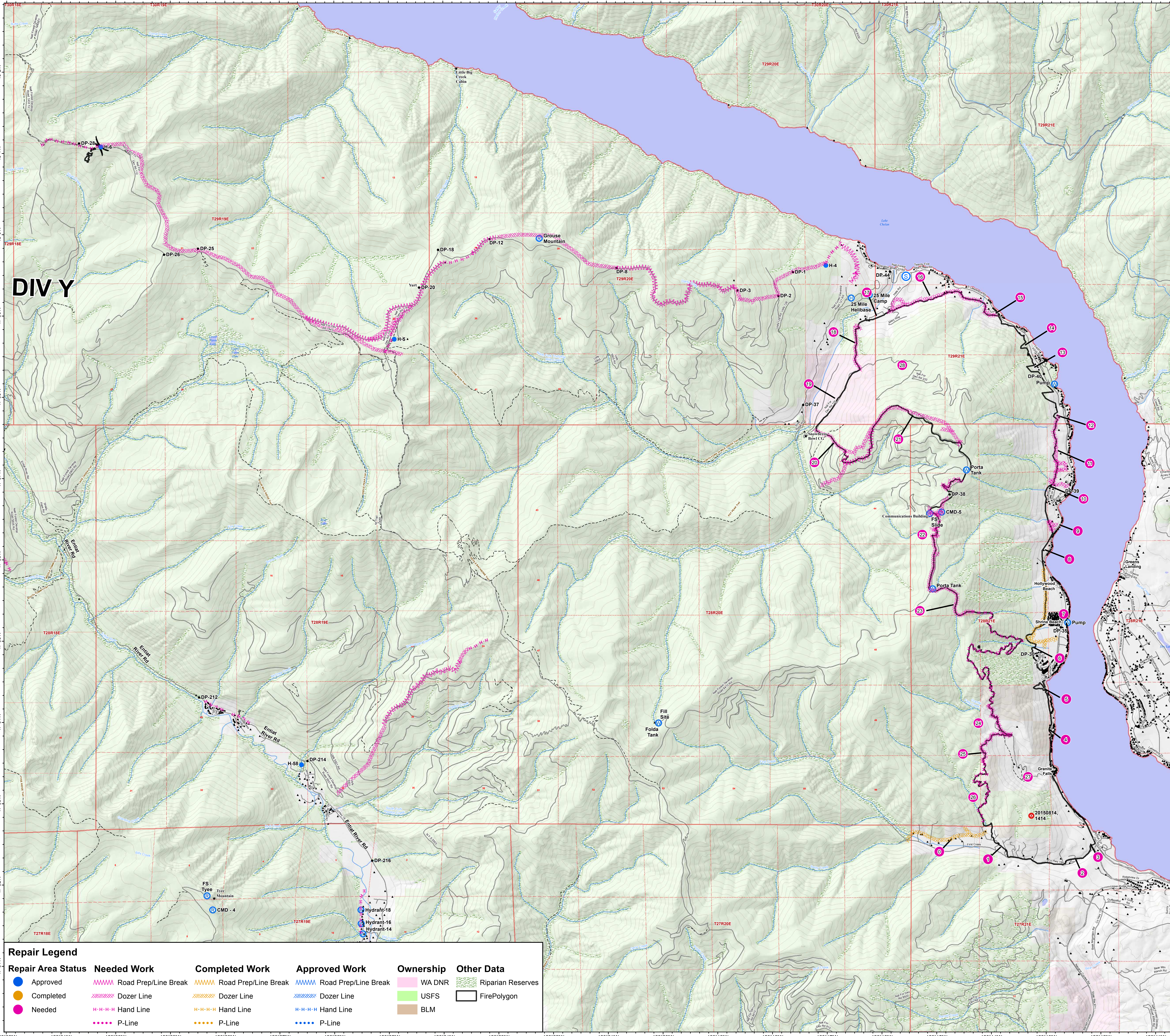
25 Mile Contingency Line

See strategy summary for more detail

- Pull Hose from DP-3 to lake;
- Handline from H-4 to Lake;
- Dozerline from DP-3 to H-4;
- Dozerline from DP-12 to DP-8;
- Handline from DP-18 to DP-12;
- Dozerline from H-6 to H-5;
- Handline from Silver Ridge to H-6;
- Handline at DP-3 Campground;

Notes:

- Fire Points Reference**
- Fire Origin
 - Drop Point
 - Ⓜ Helibase
 - Ⓜ Camp
 - Helispot
 - * Other
 - Ⓜ Water Source
 - Ⓜ Staging Area
 - Ⓜ Repeater
 - ⚠ Safety Zone



DIV Y

Repair Legend

Repair Area Status	Needed Work	Completed Work	Approved Work	Ownership	Other Data
● Approved	~~~~~ Road Prep/Line Break	~~~~~ Road Prep/Line Break	~~~~~ Road Prep/Line Break	WA DNR	▨ Riparian Reserves
● Completed	~~~~~ Dozer Line	~~~~~ Dozer Line	~~~~~ Dozer Line	USFS	▭ FirePolygon
● Needed	- - - - - Hand Line	- - - - - Hand Line	- - - - - Hand Line	BLM	
 P-Line P-Line P-Line		