

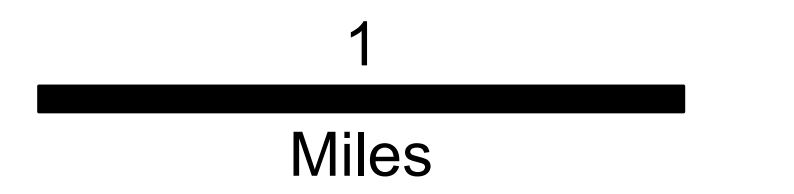
Repair Plan Map

Repair Area: Wolverine Fire

Div L

Operational Period 09/16/2015

Note: Repair items subject to modifications.



**Repair Areas: Wolverine Fire
DIV O/L Contingency Line**
See strategy summary for more detail

- Division O:**
- Oscar Temp Road
 - Oscar Gate Draft Site
 - Oscar Temp Road
 - Oscar Sky Line
 - Oscar Engine Draft
 - Oscar Landings (Repair Points)
 - Oscar Contingency Line (Repair Lines)

- Division L:**
- Lima Bike Trail
 - Lima Skyline
 - Lima Cut Bank
 - Lima Dozer Line
 - Alder Draft
 - Lima Landings (Repair Points)
 - Lima Contingency Line (Repair Lines)

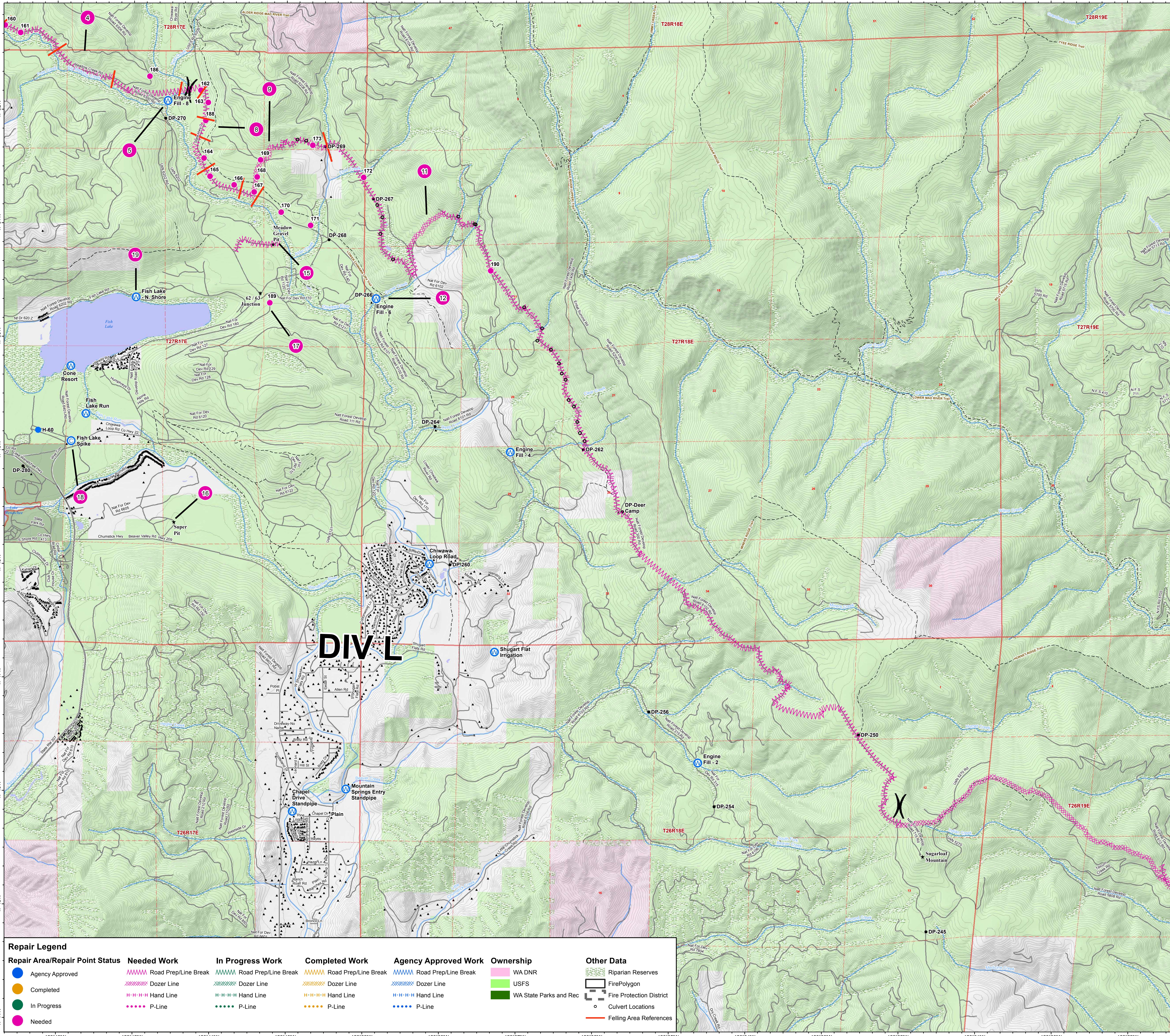
- Other:**
- Meadow Pit Deck
 - Sooper Pit Deck
 - Mulch Landing
 - Fish Lake Spike
 - Fish Lake Draft

Pt ID	Feature Type	Latitude	Longitude	Comments/Rehab Needs
158	Landing	47 53.139	-120 44.654	
159	Landing	47 53.109	-120 44.377	
160	Landing	47 52.742	-120 43.692	Full rehab needed
161	Landing	47 52.676	-120 43.449	Full rehab needed
162	Landing	47 52.17	-120 41.127	
163	Landing	47 52.063	-120 41.031	
164	Landing	47 51.573	-120 41.085	
165	Landing	47 51.413	-120 41.006	
166	Landing	47 51.338	-120 40.69	
167	Landing	47 51.276	-120 40.428	
168	Landing	47 51.408	-120 40.389	
169	Landing	47 51.558	-120 40.345	
170	Landing	47 51.099	-120 40.074	
171	Landing	47 50.983	-120 39.688	
172	Landing	47 51.405	-120 38.995	
173	Landing	47 51.688	-120 39.662	
174	Culvert Damage	47 52.931	-120 43.995	Filled with debris
175	Landing	47 53.009	-120 47.033	Chip biomass 30' buffer
176	Landing	47 53.029	-120 46.907	Full rehab needed
177	Landing	47 53.074	-120 46.618	Full rehab needed
178	Landing	47 53.051	-120 46.328	Full rehab needed
179	Landing	47 52.903	-120 45.683	Chipped biomass 30' buf
180	Landing	47 52.925	-120 45.467	Full rehab needed
181	General Disturbance	47 52.987	-120 47.151	100' dozer lane
182	General Disturbance	47 53.03	-120 45.26	Pullout
183	Landing	47 52.906	-120 45.605	Georgia?
184	Culvert Damage	47 53.038	-120 46.868	Minor, North side
185	General Disturbance	47 53.018	-120 44.068	Pullout
186	Invasive Plant Specie#	47 52.293	-120 41.796	Centaurea diffusa patch
187	Landing	47 53.477	-120 48.635	
188	Landing	47 51.905	-120 41.064	
189	Landing	47 50.3	-120 40.221	
190	Landing	47 50.585	-120 37.33	

Notes:

Fire Points Reference

- Helispot
- ⊙ Camp
- ⊙ Water Source
- * Other
- Drop Point



Repair Legend

Repair Area/Repair Point Status	Needed Work	In Progress Work	Completed Work	Agency Approved Work	Ownership	Other Data
● Agency Approved	⚡ Road Prep/Line Break	⚡ Road Prep/Line Break	⚡ Road Prep/Line Break	⚡ Road Prep/Line Break	● WA DNR	▭ Riparian Reserves
● Completed	⚡ Dozer Line	⚡ Dozer Line	⚡ Dozer Line	⚡ Dozer Line	● USFS	▭ FirePolygon
● In Progress	⚡ Hand Line	⚡ Hand Line	⚡ Hand Line	⚡ Hand Line	● WA State Parks and Rec	▭ Fire Protection District
● Needed	⚡ P-Line	⚡ P-Line	⚡ P-Line	⚡ P-Line	● Culvert Locations	▭ Felling Area References