

Repair Plan Map

Repair Area: Wolverine Fire
Div O

Operational Period 09/16/2015

Note: Repair items subject to modifications.



**Repair Areas: Wolverine Fire
 DIV O/L Contingency Line**
 See strategy summary for more detail

- Division O:**
- Oscar Temp Road
 - Oscar Gate Draft Site
 - Oscar Temp Road
 - Oscar Sky Line
 - Oscar Engine Draft
 - Oscar Landings (Repair Points)
 - Oscar Contingency Line (Repair Lines)

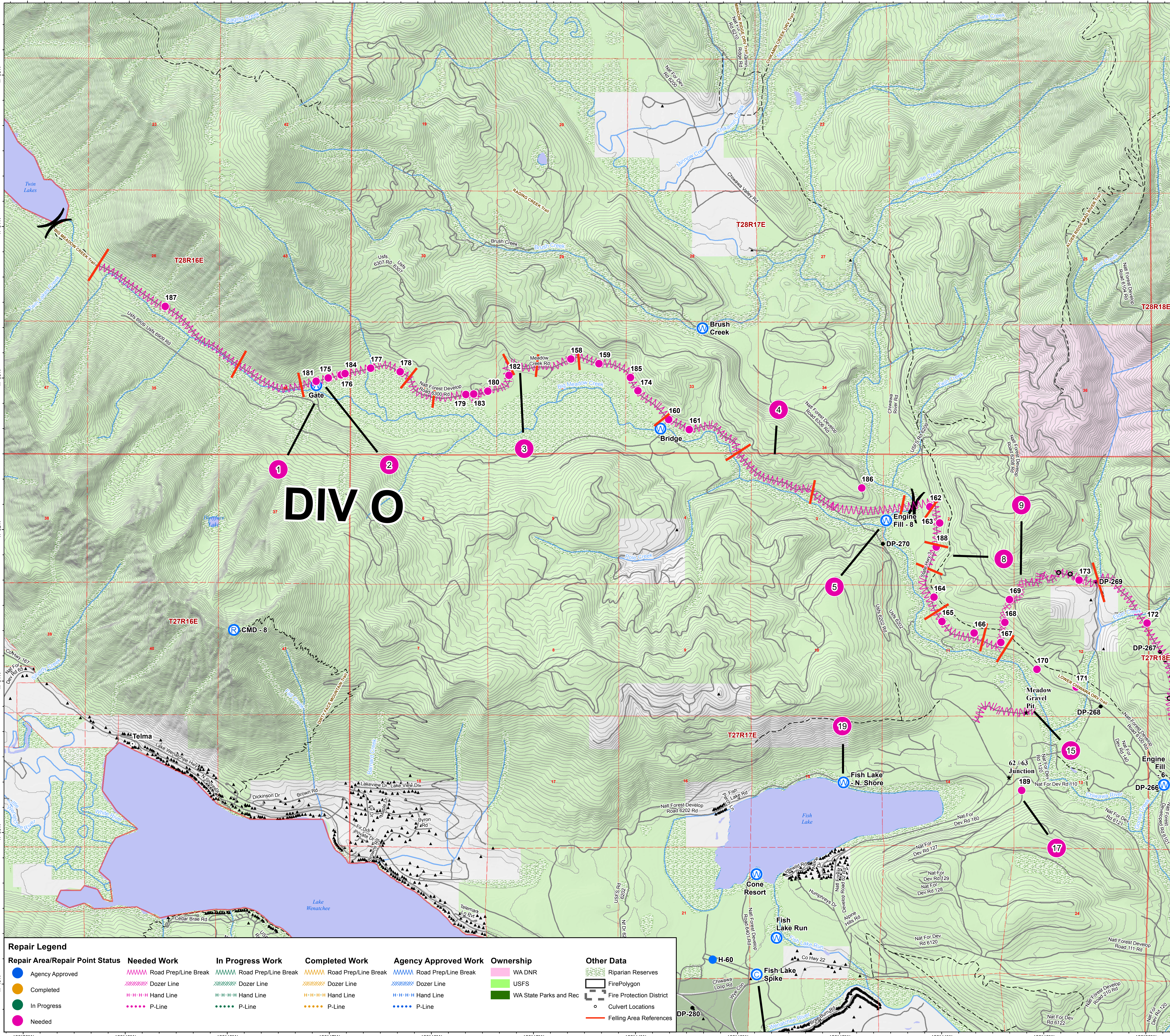
- Division L:**
- Lima Bike Trail
 - Lima Skyline
 - Lima Cut Bank
 - Lima Dozer Line
 - Alder Draft
 - Lima Landings (Repair Points)
 - Lima Contingency Line (Repair Lines)

- Other:**
- Meadow Pit Deck
 - Sooper Pit Deck
 - Mulch Landing
 - Fish Lake Spike
 - Fish Lake Draft

Pt ID	Feature Type	Latitude	Longitude	Comments/Rehab Needs
158	Landing	47 53.139	-120 44.654	
159	Landing	47 53.109	-120 44.377	
160	Landing	47 52.742	-120 43.692	Full rehab needed
161	Landing	47 52.676	-120 43.49	Full rehab needed
162	Landing	47 52.17	-120 41.127	
163	Landing	47 52.063	-120 41.031	
164	Landing	47 51.573	-120 41.085	
165	Landing	47 51.413	-120 41.006	
166	Landing	47 51.338	-120 40.69	
167	Landing	47 51.276	-120 40.428	
168	Landing	47 51.408	-120 40.389	
169	Landing	47 51.558	-120 40.345	
170	Landing	47 51.099	-120 40.074	
171	Landing	47 50.983	-120 39.688	
172	Landing	47 51.405	-120 38.995	
173	Landing	47 51.688	-120 39.662	
174	Culvert Damage	47 52.931	-120 43.995	Filled with debris
175	Landing	47 53.009	-120 47.033	Chip biomass 30' buffer
176	Landing	47 53.029	-120 46.907	Full rehab needed
177	Landing	47 53.074	-120 46.618	Full rehab needed
178	Landing	47 53.051	-120 46.328	Full rehab needed
179	Landing	47 52.903	-120 45.683	Chipped biomass 30' buf
180	Landing	47 52.925	-120 45.467	Full rehab needed
181	General Disturbance	47 52.987	-120 47.151	100' dozer lane
182	General Disturbance	47 53.03	-120 45.26	Pullout
183	Landing	47 52.906	-120 45.605	Georgia?
184	Culvert Damage	47 53.038	-120 46.868	Minor, North side
185	General Disturbance	47 53.018	-120 44.068	Pullout
186	Invasive Plant Species	47 52.293	-120 41.796	Centaurea diffusa patch
187	Landing	47 53.477	-120 48.635	
188	Landing	47 51.905	-120 41.064	
189	Landing	47 50.3	-120 40.221	
190	Landing	47 50.585	-120 37.33	

Notes:

- Fire Points Reference**
- Helispot
 - Water Source
 - Repeater
 - Drop Point
 - Camp
 - Other



Repair Legend

Repair Area/Repair Point Status	Needed Work	In Progress Work	Completed Work	Agency Approved Work	Ownership	Other Data
Agency Approved	Road Prep/Line Break	Road Prep/Line Break	Road Prep/Line Break	Road Prep/Line Break	WA DNR	Riparian Reserves
Completed	Dozer Line	Dozer Line	Dozer Line	Dozer Line	USFS	Fire Polygon
In Progress	Hand Line	Hand Line	Hand Line	Hand Line	WA State Parks and Rec	Fire Protection District
Needed	P-Line	P-Line	P-Line	P-Line		Culvert Locations
						Felling Area References