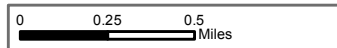



Wolverine/First Creek IAP

Operational Period 9/18/2015

GIS Acres 73,214
20150912@0104

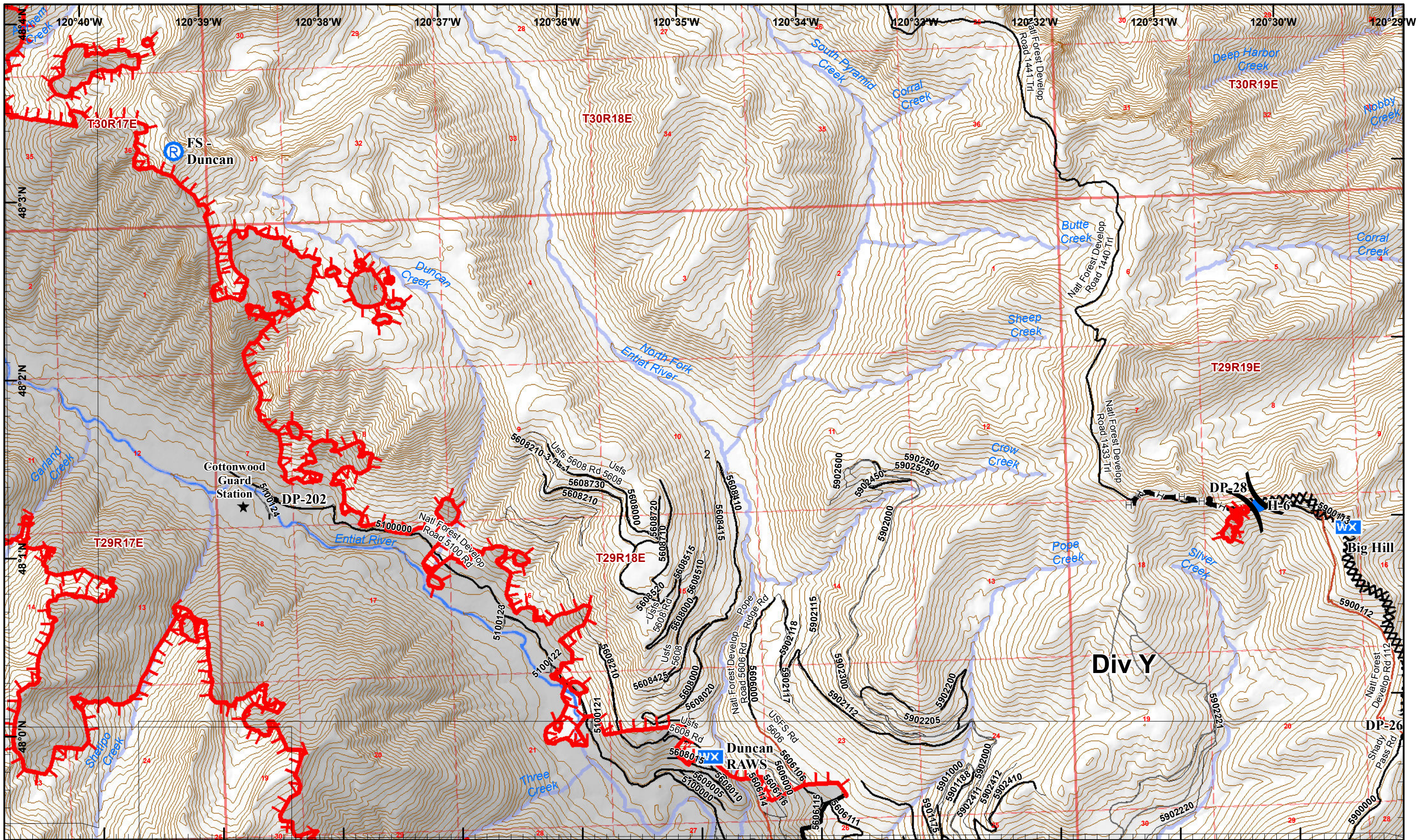


 Helispot



1	2	11
3	4	12
5	6	13
7	8	14
9	10	15

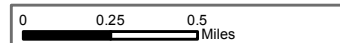




Wolverine/First Creek IAP

Operational Period 9/18/2015

GIS Acres 73,214
20150912@0104

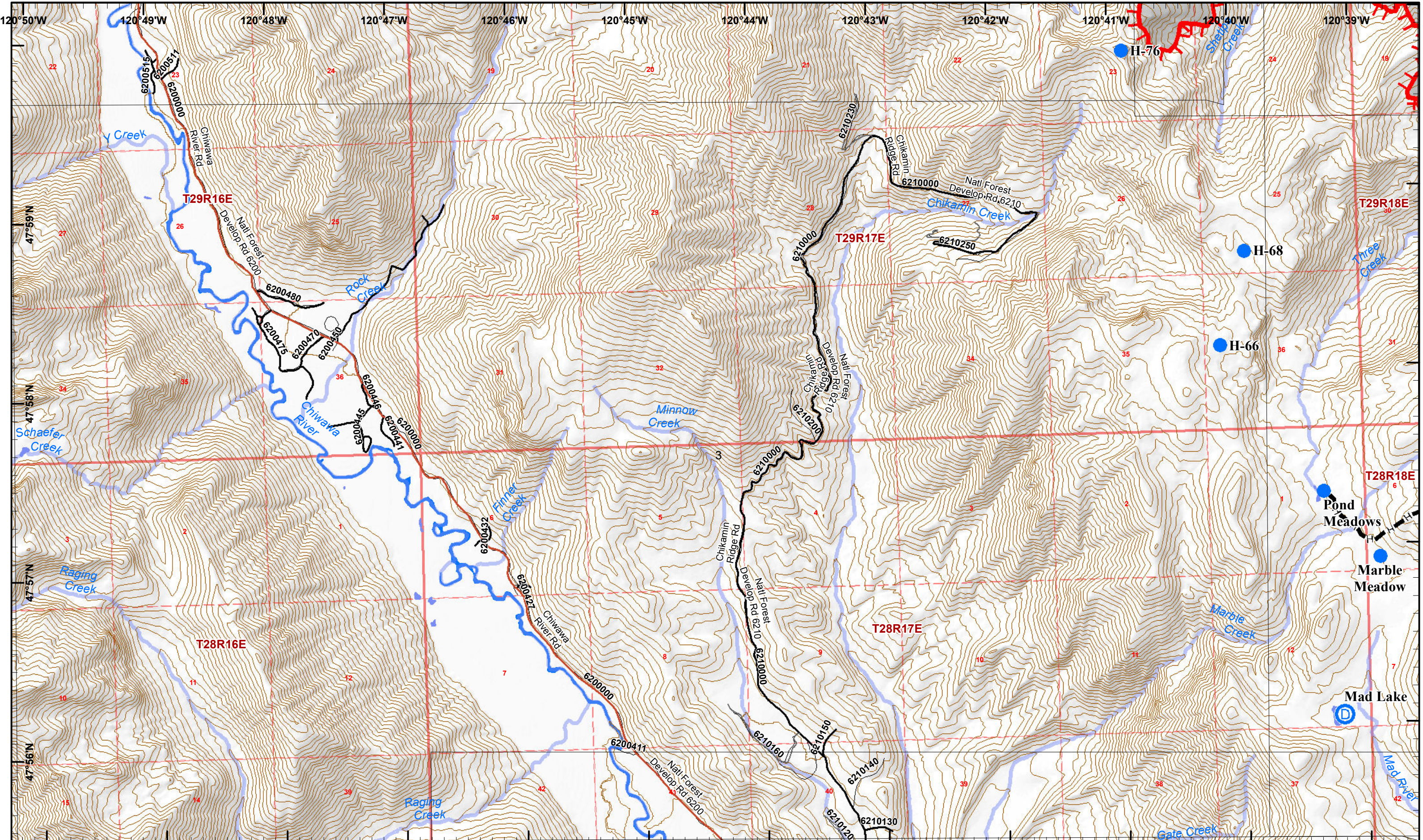


- Helispot
- R Repeater
- ★ Other
- WX Mobil Weather Unit
- Drop Point



1	2	3	4
5	6	7	8
9	10	11	12

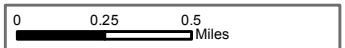




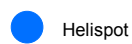
Wolverine/First Creek IAP

Operational Period 9/18/2015

GIS Acres 73,214
20150912@0104



Dip Site

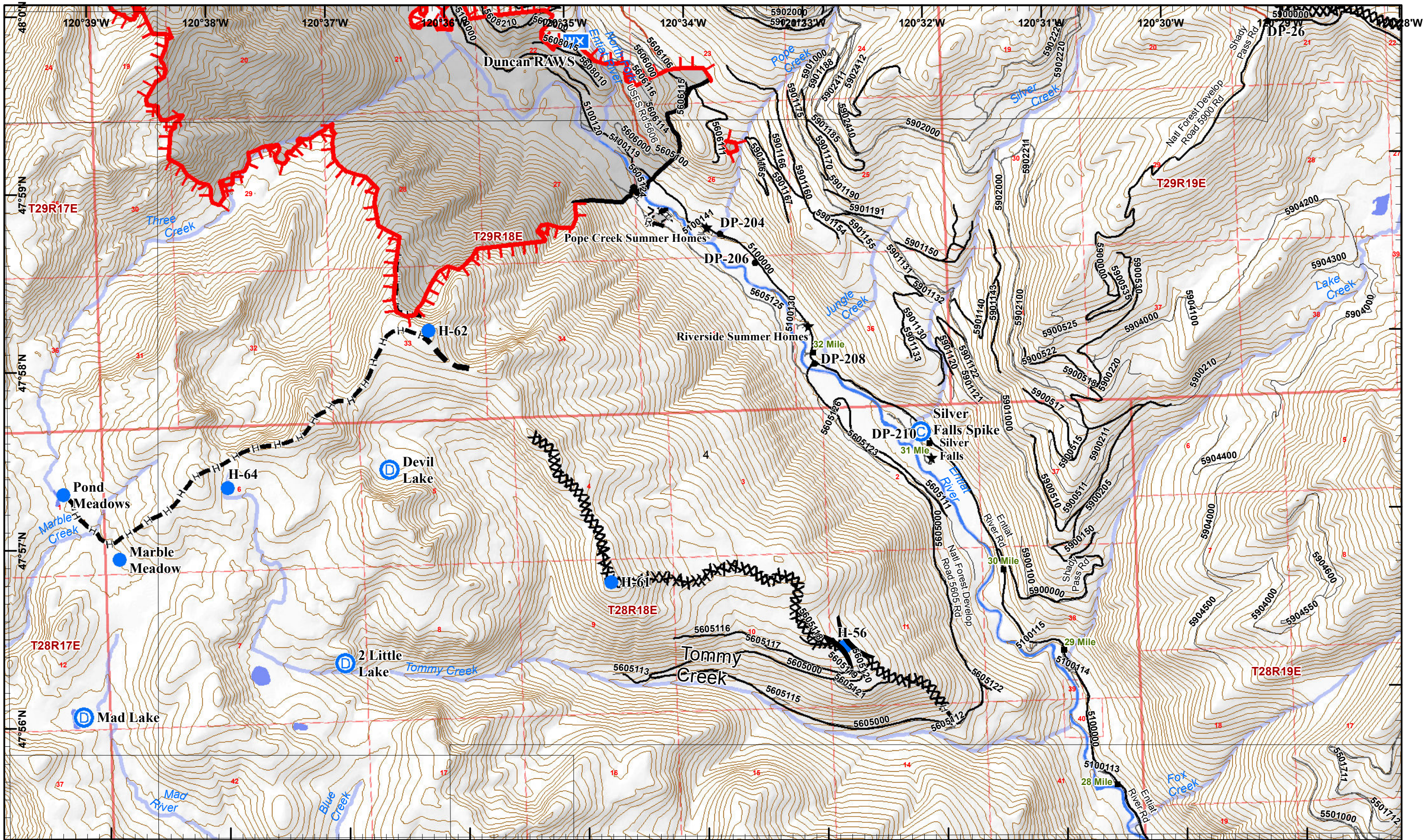


Helispot



1	2	11
3	6	12
5	8	
7	9	10

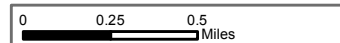




Wolverine/First Creek IAP

Operational Period 9/18/2015

GIS Acres 73,214
20150912@0104



WX Mobil Weather Unit

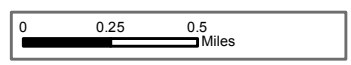
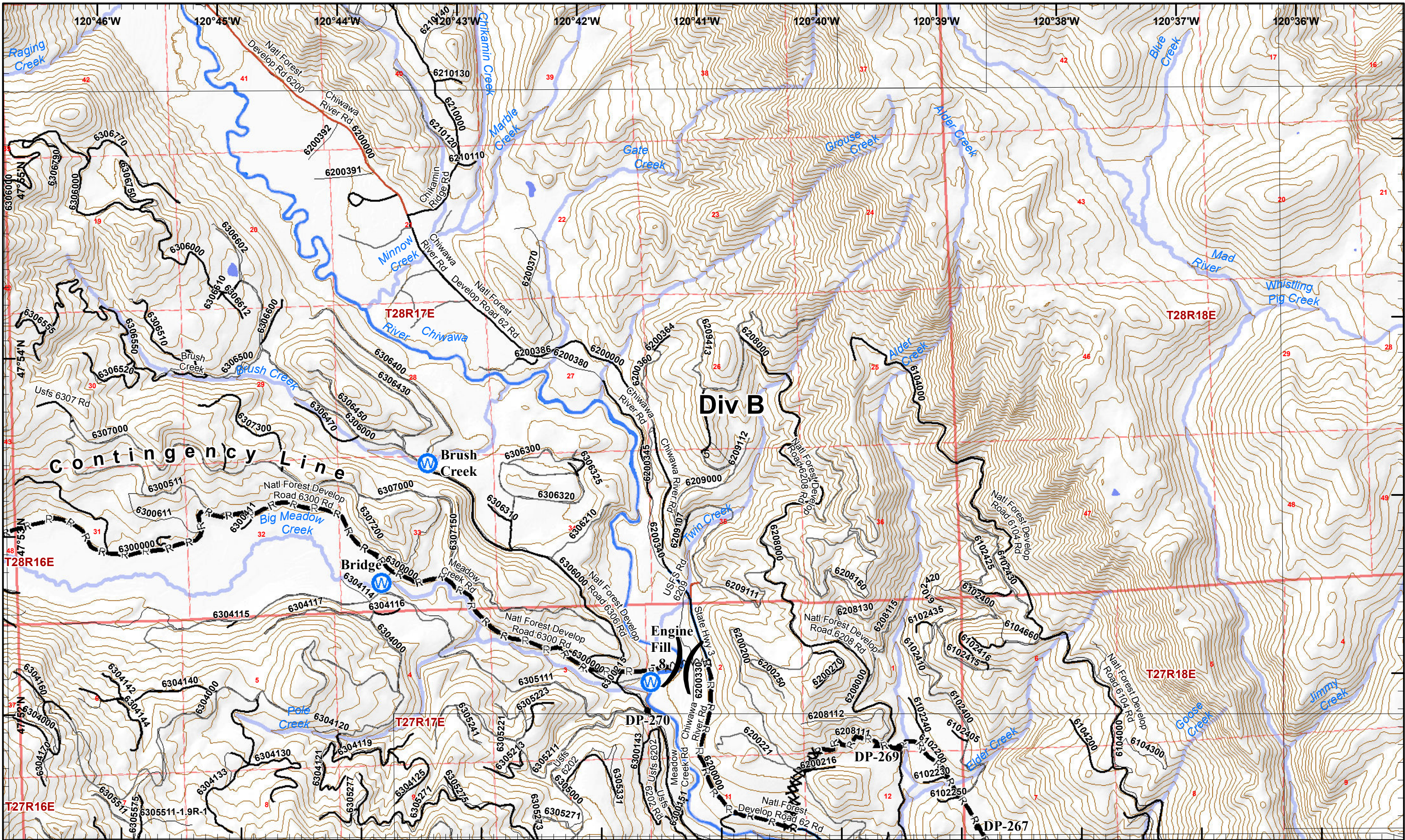
Camp

Drop Point Other



1	2	11
3	4	12
5	6	13
7	8	14
9	10	



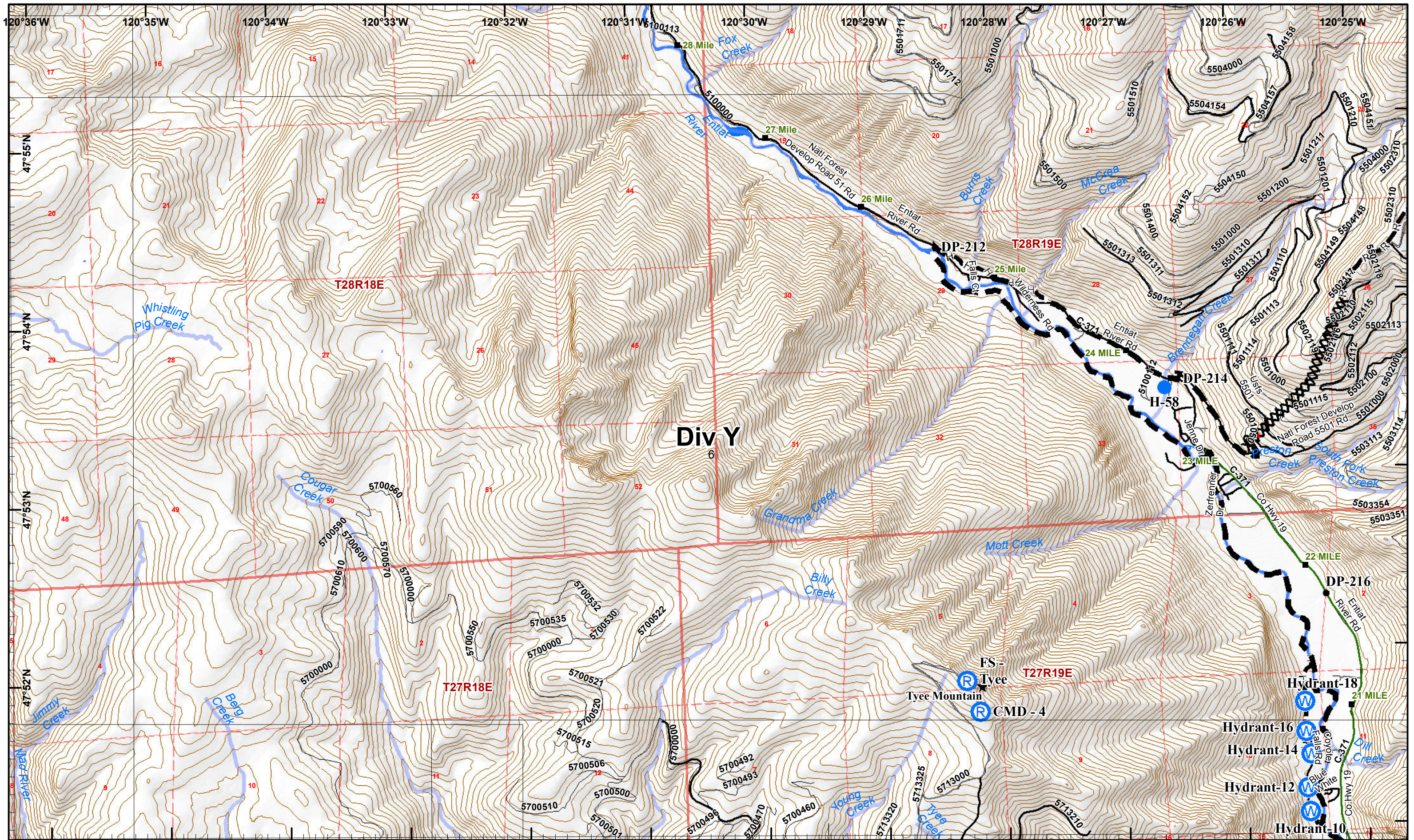



 Water Source
 Drop Point



1	2	11
3	4	12
5	6	13
7	8	14
9	10	15

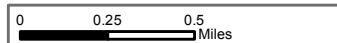




Wolverine/First Creek IAP

Operational Period 9/18/2015

GIS Acres 73,214
20150912@0104

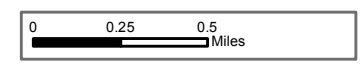
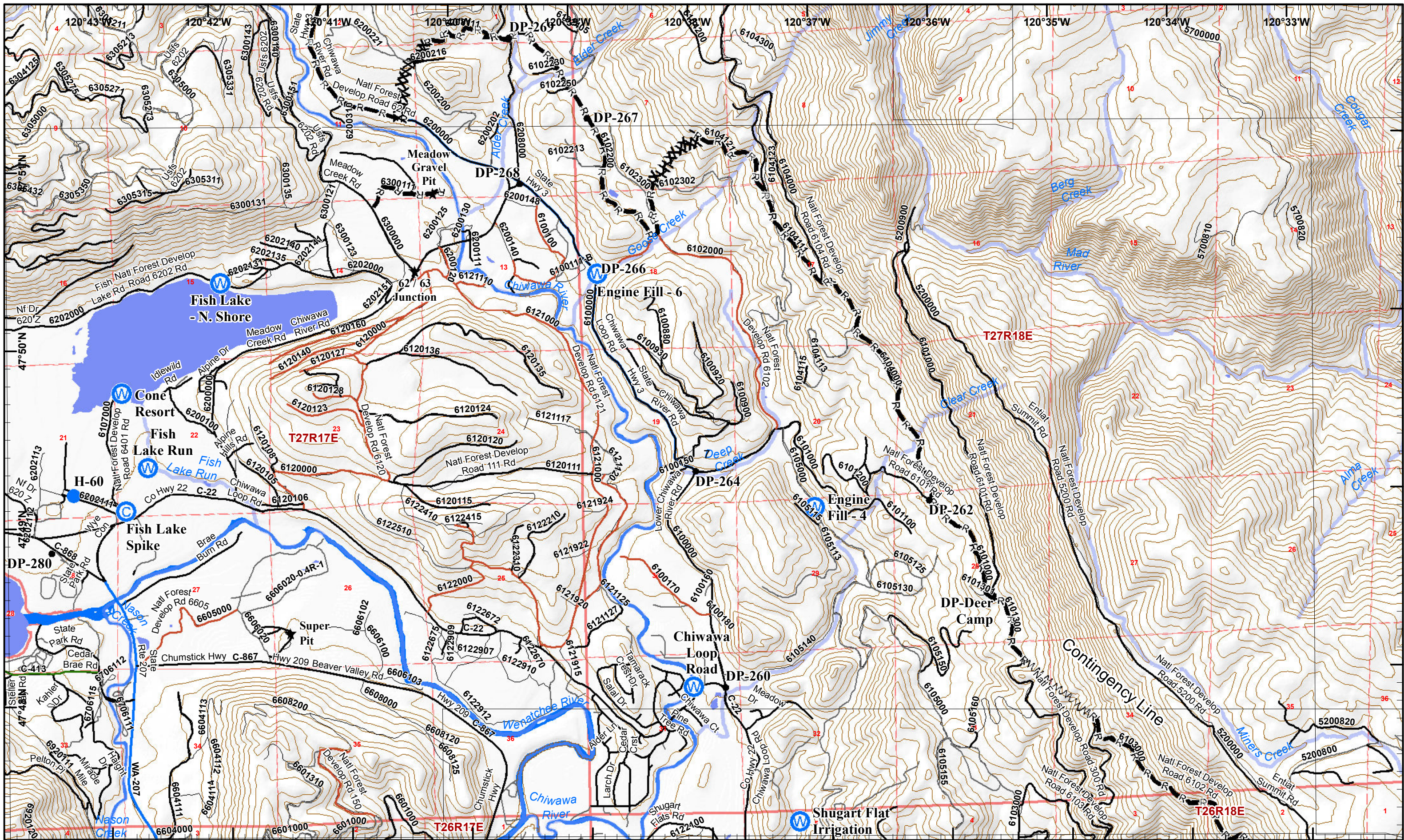


- Helispot
- W Water Source
- R Repeater
- ★ Other
- Drop Point



1	2	11
3	4	12
5	6	13
7	8	14
9	10	15



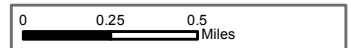
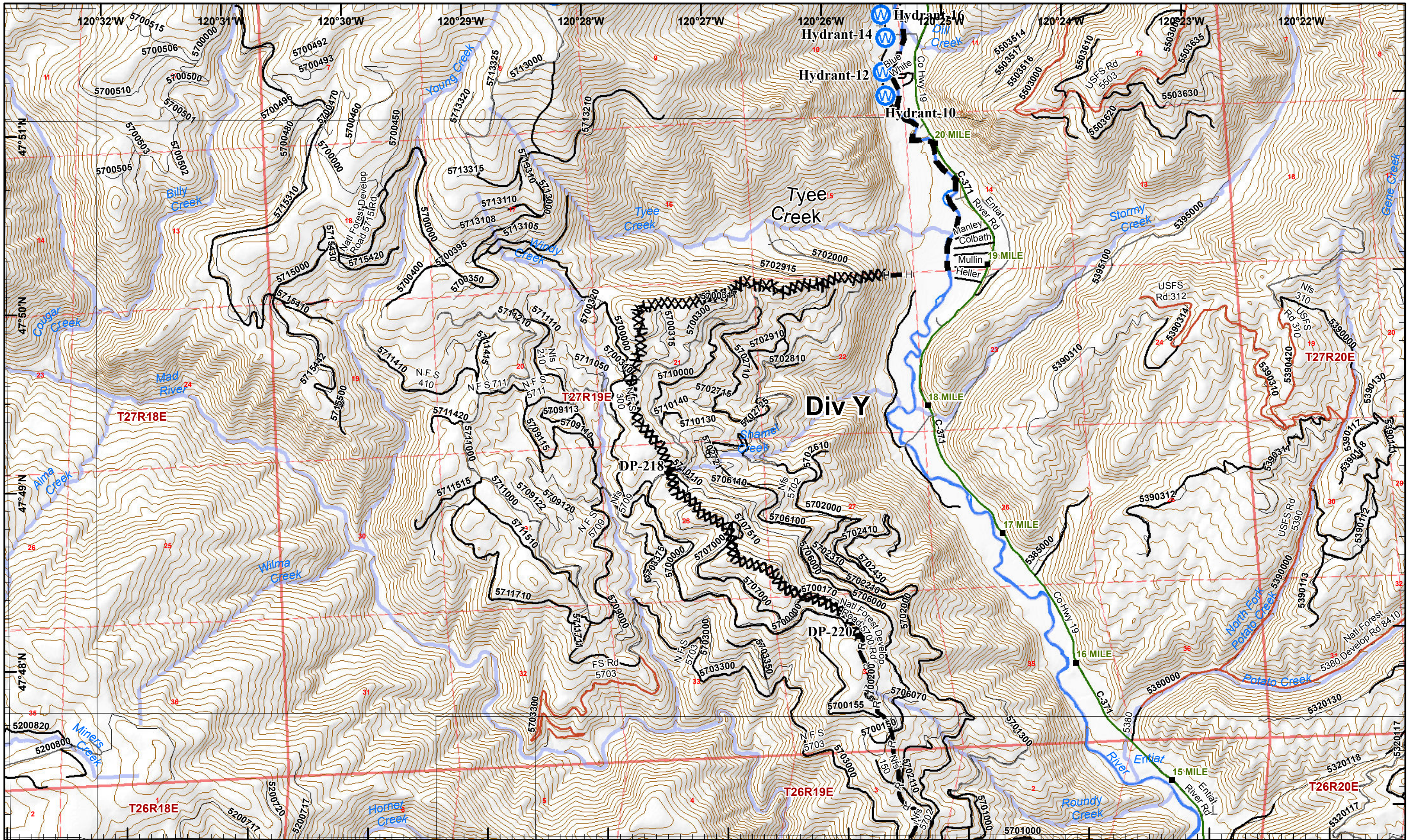


- Helispot
- W Water Source
- C Camp
- Drop Point
- ★ Other



1	2	11
3	4	12
5	6	13
7	8	14
9	10	15



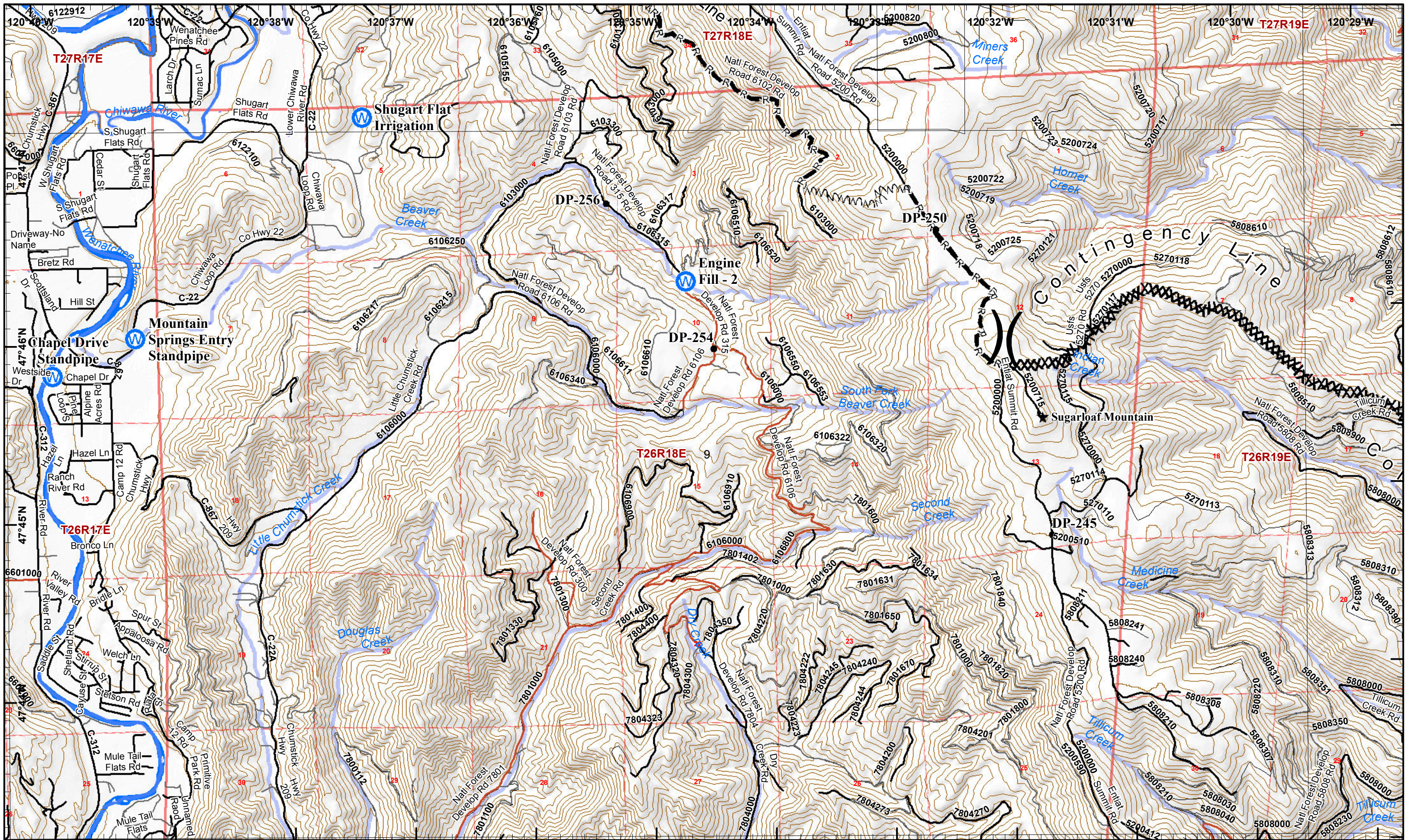


- Water Source
- Repeater
- Drop Point



1	2	11
3	4	12
5	6	13
7	8	14
9	10	15

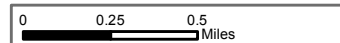




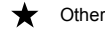
Wolverine/First Creek IAP

Operational Period 9/18/2015

GIS Acres 73,214
20150912@0104



Water Source



Other

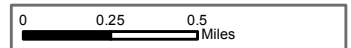
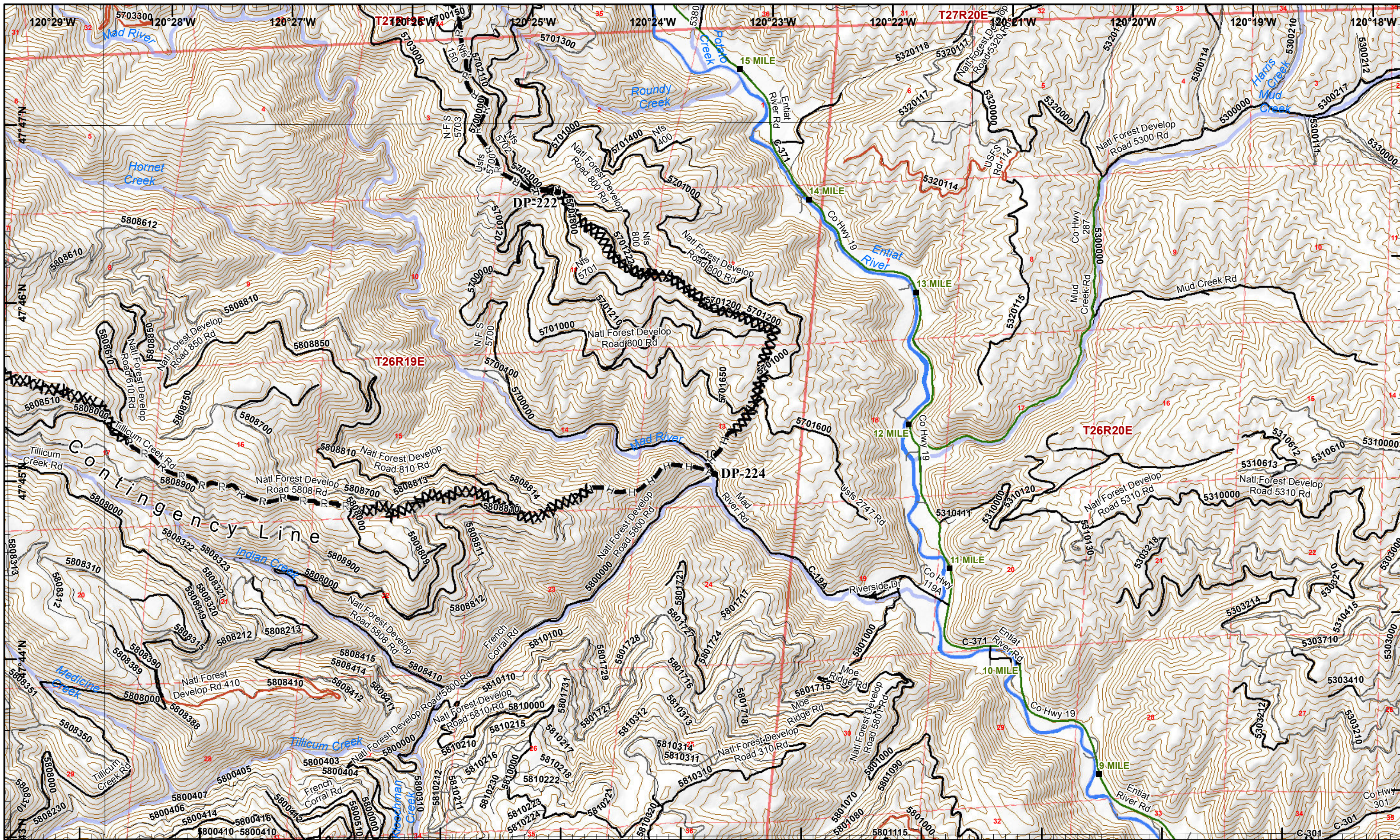


Drop Point



1	2	11
3	4	12
5	6	13
7	8	14
9	10	



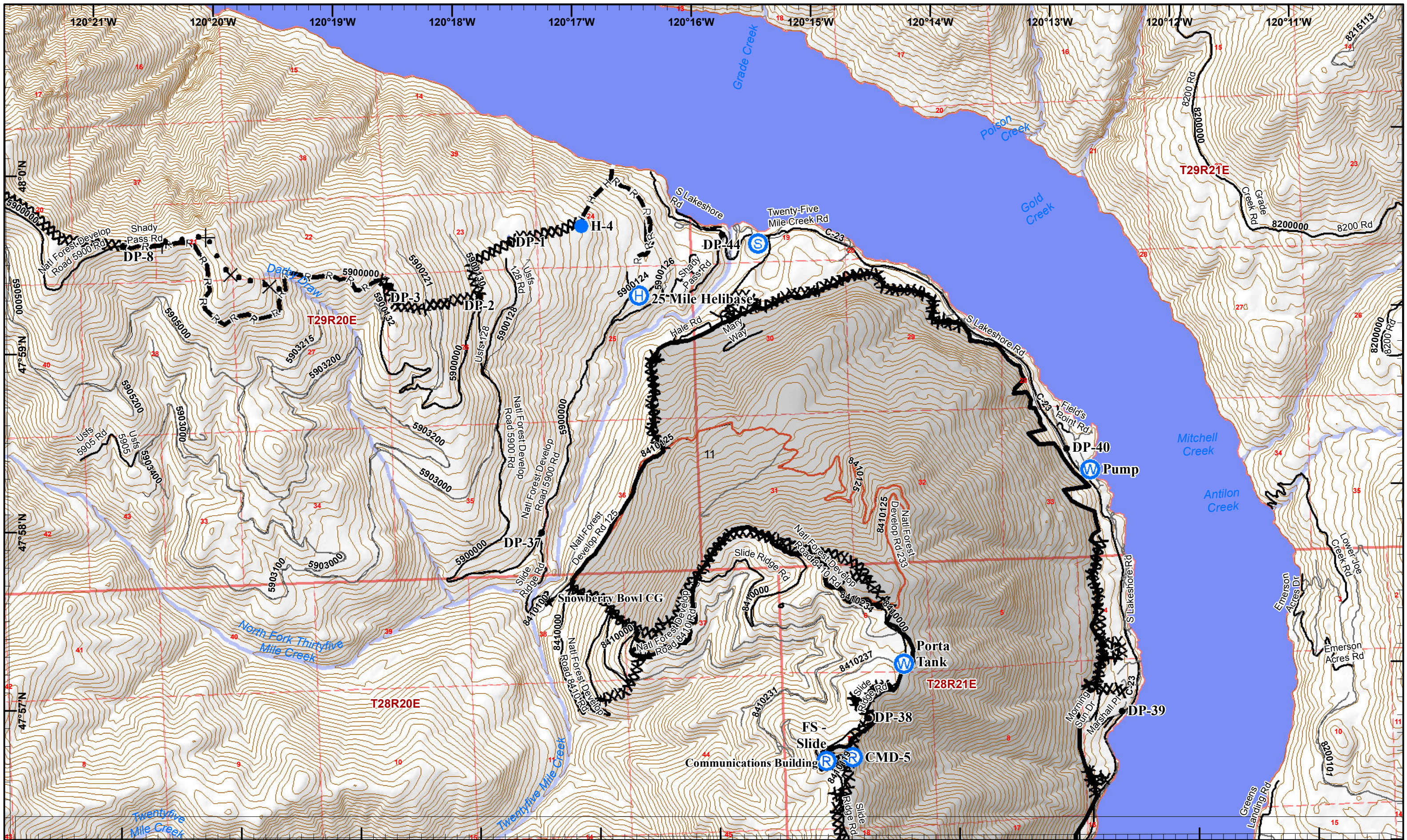


● Drop Point



1	2	11
3	4	12
5	6	
7	8	
9	10	

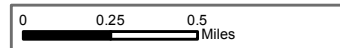




Wolverine/First Creek IAP

Operational Period 9/18/2015

GIS Acres 73,214
20150912@0104

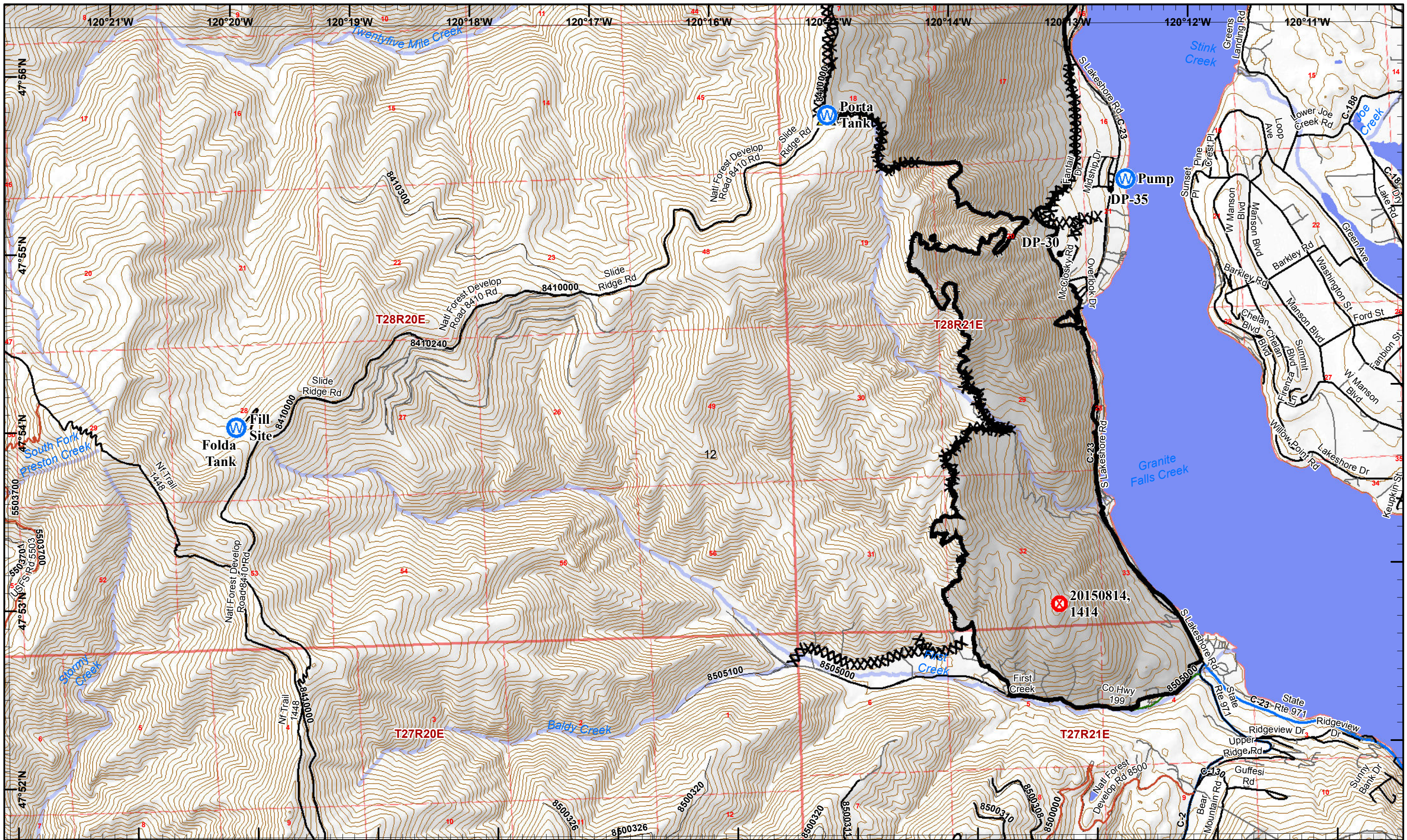


- Helibase
- Helispot
- Water Source
- Repeater
- Other
- Drop Point
- Staging Area



1	2	3	4	5	6	7	8	9	10	11	12
1	2	3	4	5	6	7	8	9	10	11	12
1	2	3	4	5	6	7	8	9	10	11	12
1	2	3	4	5	6	7	8	9	10	11	12

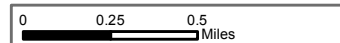




Wolverine/First Creek IAP

Operational Period 9/18/2015

GIS Acres 73,214
20150912@0104



Fire Origin



Water Source



Safety Zone

● Drop Point



1	2	11
3	4	12
5	6	13
7	8	14
9	10	15

