





120°42'0"W 120°41'30"W 120°41'0"W 120°40'30"W 120°40'0"W 120°39'30"W 120°39'0"W 120°38'30"W 120°38'0"W 120°37'30"W

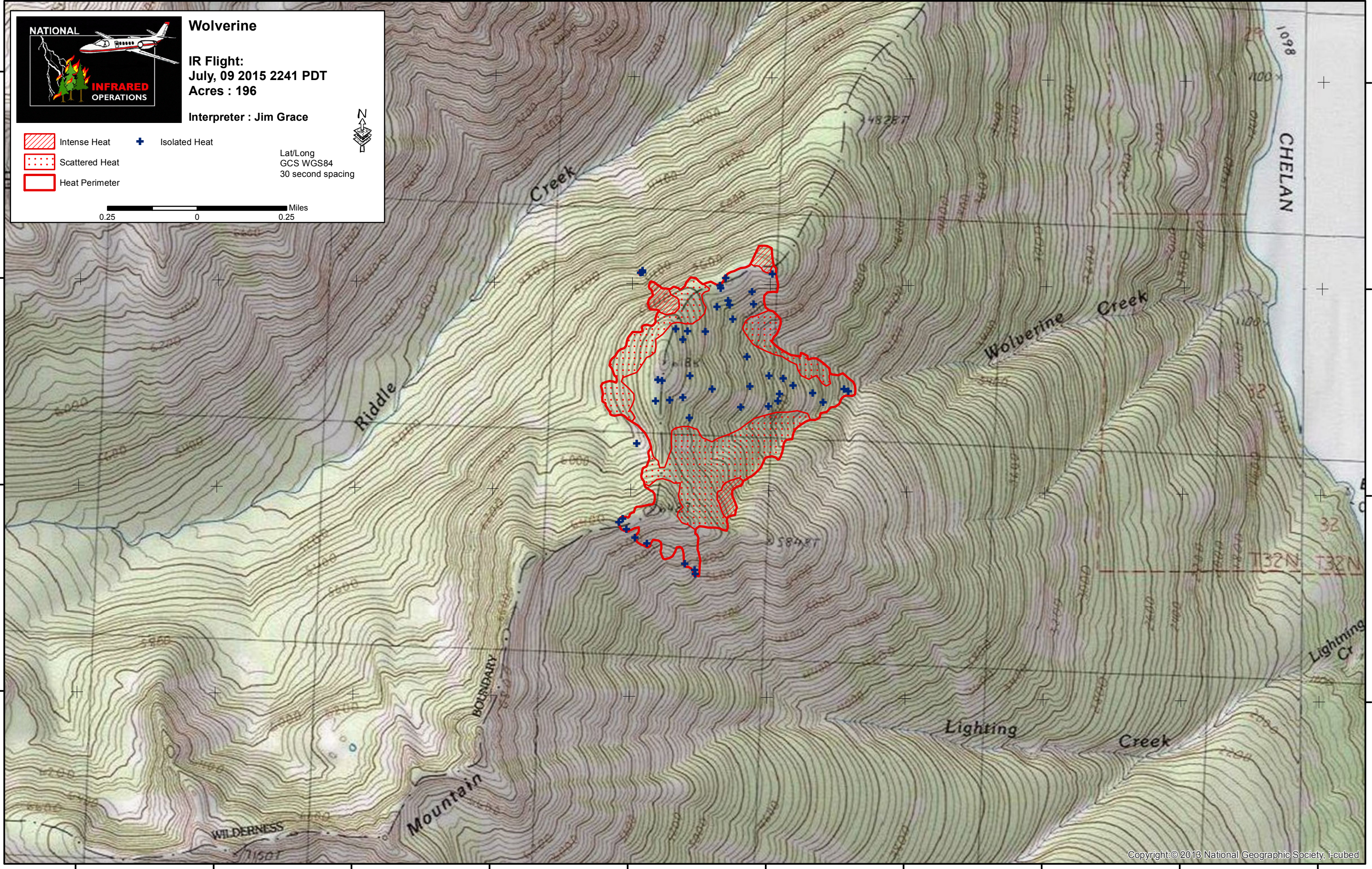
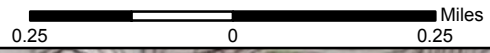
48°14'30"N
48°14'0"N
48°13'30"N
48°13'0"N



Wolverine
IR Flight:
July, 09 2015 2241 PDT
Acres : 196
Interpreter : Jim Grace

-  Intense Heat
-  Scattered Heat
-  Heat Perimeter
-  Isolated Heat

Lat/Long
GCS WGS84
30 second spacing



48°14'30"N
48°14'0"N
48°13'30"N
48°13'0"N

120°42'0"W 120°41'30"W 120°41'0"W 120°40'30"W 120°40'0"W 120°39'30"W 120°39'0"W 120°38'30"W 120°38'0"W 120°37'30"W