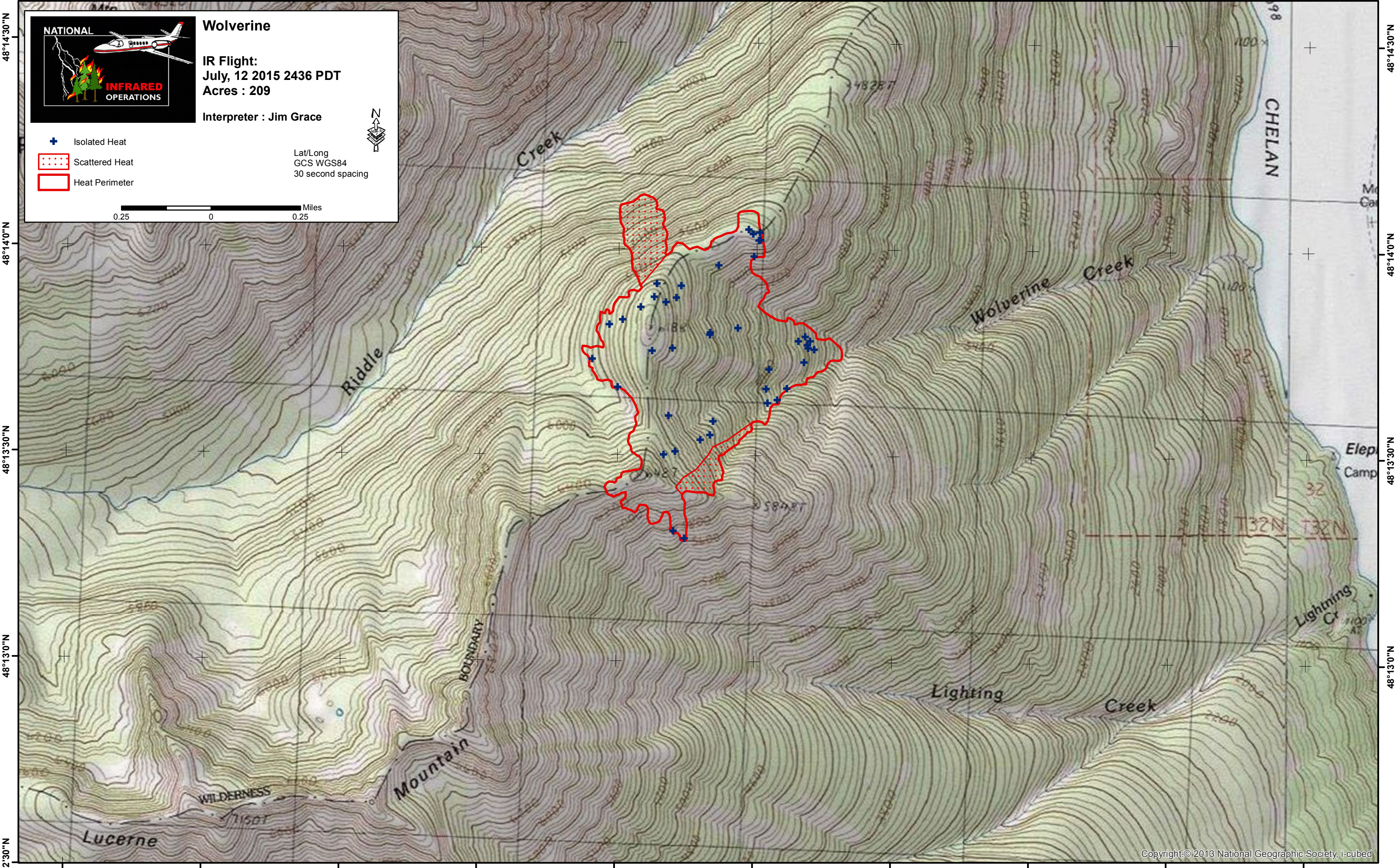


120°42'0"W 120°41'30"W 120°41'0"W 120°40'30"W 120°40'0"W 120°39'30"W 120°39'0"W 120°38'30"W 120°38'0"W 120°37'30"W



48°14'30"N
48°14'0"N
48°13'30"N
48°13'0"N
48°12'30"N

NATIONAL INFRARED OPERATIONS

Wolverine

IR Flight:
July, 12 2015 2436 PDT
Acres : 209

Interpreter : Jim Grace

Lat/Long
GCS WGS84
30 second spacing

Miles
0.25 0 0.25