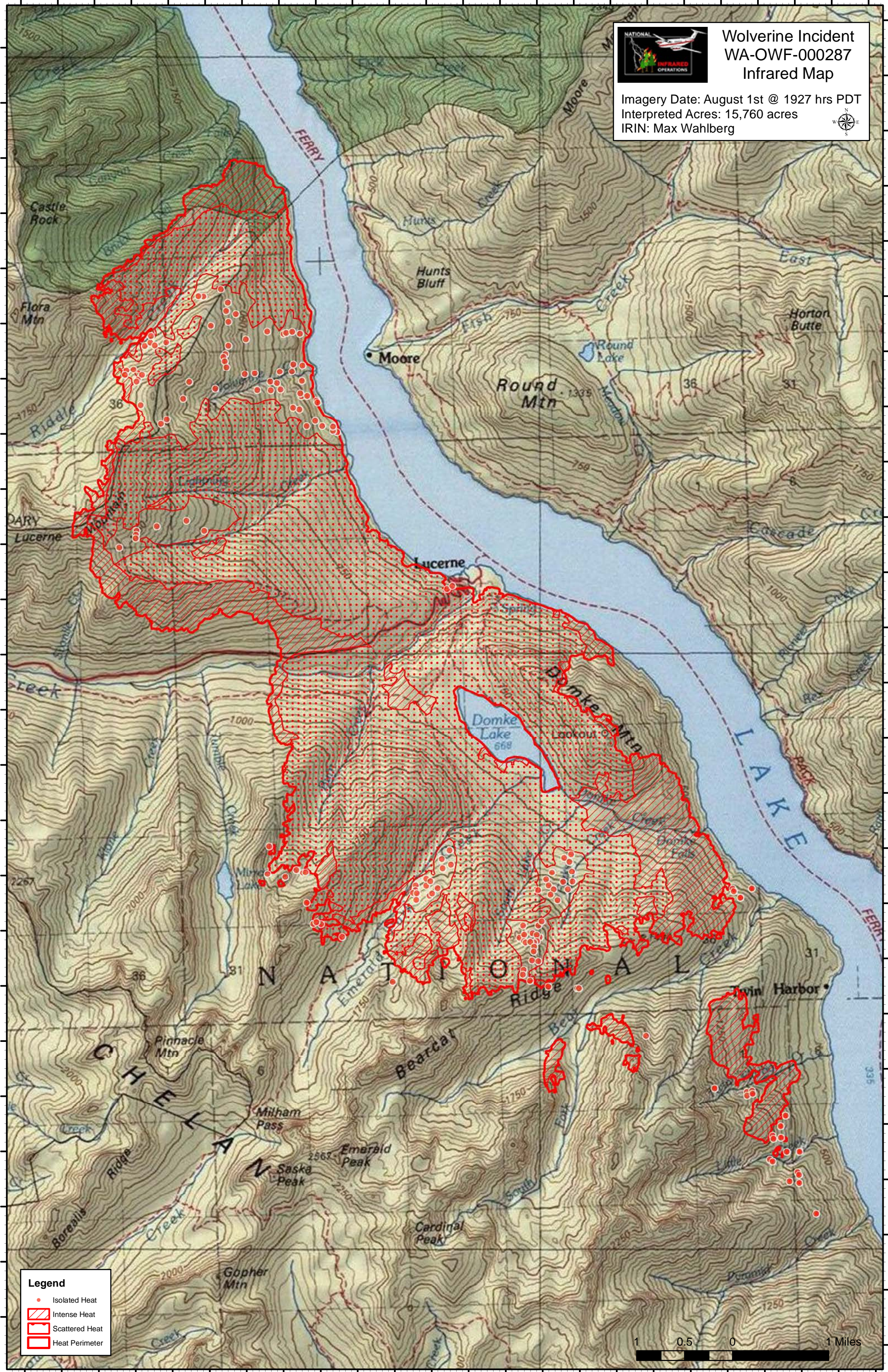


120°41'0"W 120°40'0"W 120°39'0"W 120°38'0"W 120°37'0"W 120°36'0"W 120°35'0"W 120°34'0"W 120°33'0"W 120°32'0"W 120°31'0"W 120°30'0"W



Wolverine Incident WA-OWF-000287 Infrared Map

Imagery Date: August 1st @ 1927 hrs PDT
Interpreted Acres: 15,760 acres
IRIN: Max Wahlberg



Legend

- Isolated Heat
- Intense Heat
- Scattered Heat
- Heat Perimeter



120°41'30"W 120°40'30"W 120°39'30"W 120°38'30"W 120°37'30"W 120°36'30"W 120°35'30"W 120°34'30"W 120°33'30"W 120°32'30"W 120°31'30"W 120°30'30"W