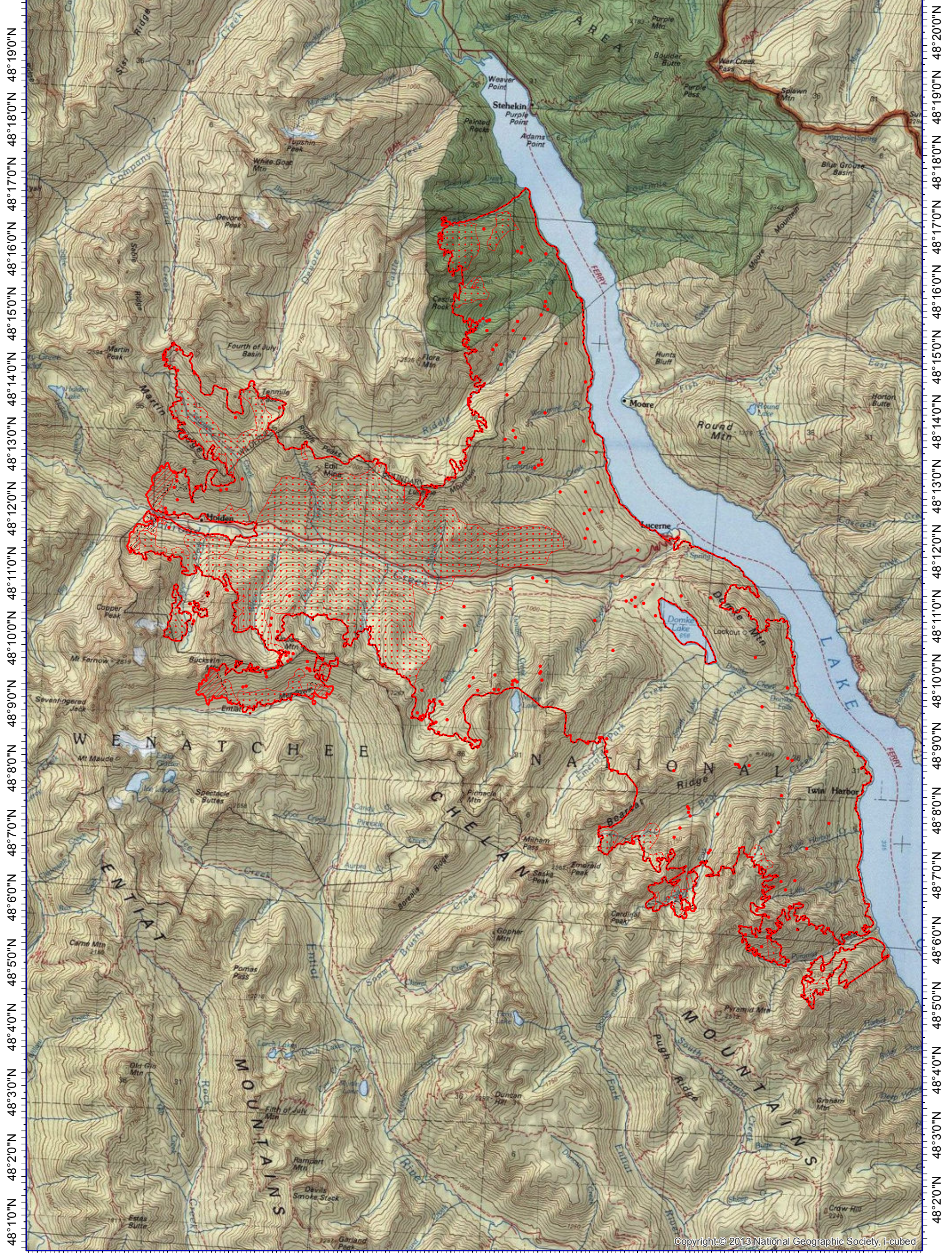


120°50'30"W 120°48'30"W 120°46'30"W 120°44'30"W 120°42'30"W 120°40'30"W 120°38'30"W 120°36'30"W 120°34'30"W 120°32'30"W 120°30'30"W



120°48'30"W 120°46'30"W 120°44'30"W 120°42'30"W 120°40'30"W 120°38'30"W 120°36'30"W 120°34'30"W 120°32'30"W 120°30'30"W

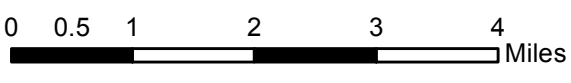


INFRARED MAP
 Wolverine (WA-OWF-000287)
 Flight: Aug 18, 2015 @ 2349 PDT
 IRIN Cheron Ferland (Oregon)
 IRIN (t): Dale Gough (Oregon)



Legend

- Isolated Heat
- - - Previous GIS Perimeter (20150818_1927)
- ▭ Heat Perimeter
- ▨ Intense Heat
- ▤ Scattered Heat



Copyright © 2013 National Geographic Society, i-cubed