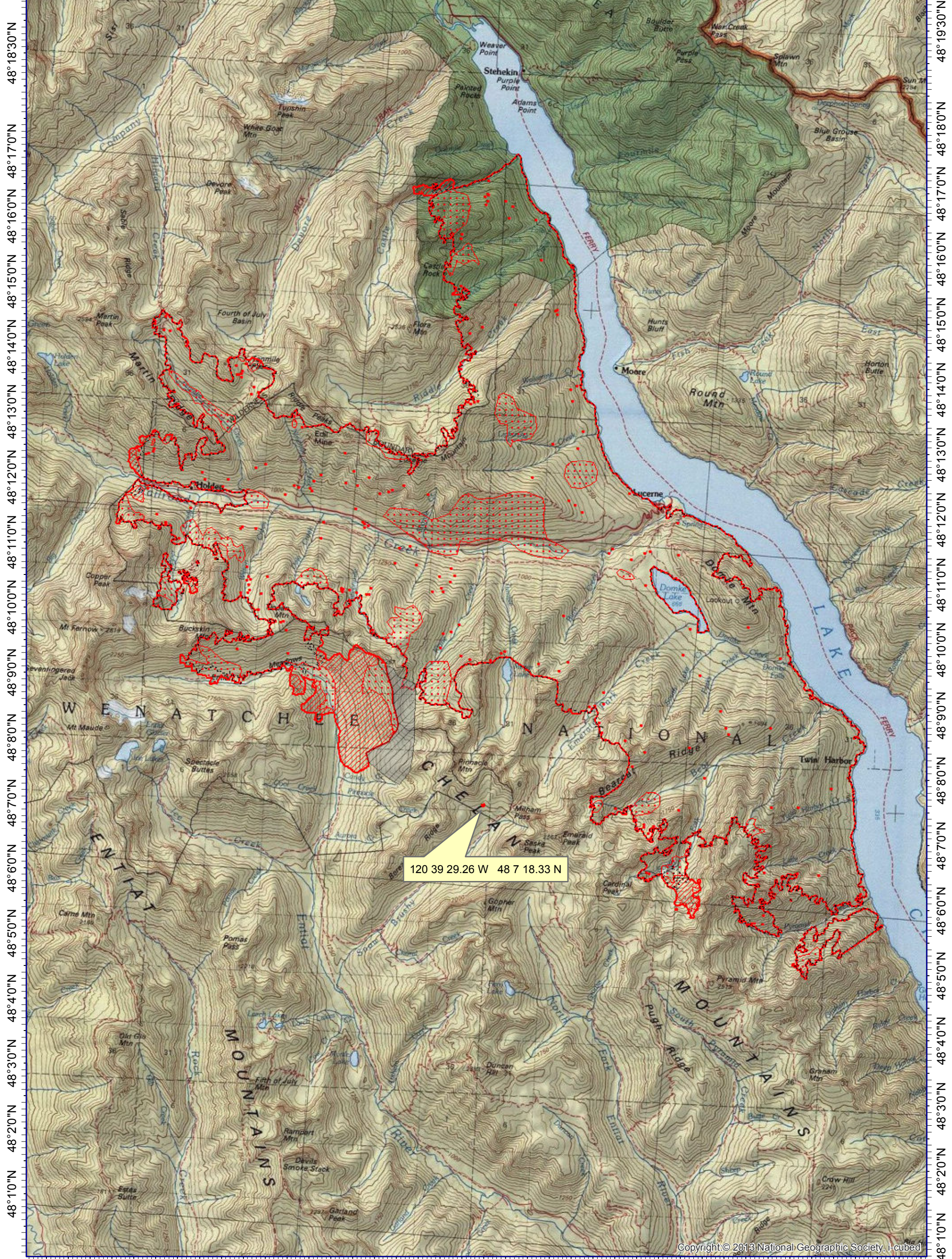


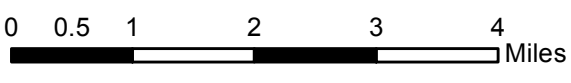
120°50'30"W 120°48'30"W 120°46'30"W 120°44'30"W 120°42'30"W 120°40'30"W 120°38'30"W 120°36'30"W 120°34'30"W 120°32'30"W 120°30'30"W



120°48'30"W 120°46'30"W 120°44'30"W 120°42'30"W 120°40'30"W 120°38'30"W 120°36'30"W 120°34'30"W 120°32'30"W 120°30'30"W



INFRARED MAP
 Wolverine (WA-OWF-000287)
 Flight: Aug 19, 2015 @ 2141 PDT
 IRIN Cheron Ferland (Oregon)
 IRIN (t): Dale Gough (Oregon)



Legend	
•	Isolated Heat
- - -	Previous GIS Perimeter (20150819_2041)
▭ (red outline)	Heat Perimeter
▭ (diagonal lines)	Intense Heat
▭ (dotted pattern)	Scattered Heat
▭ (grey hatched)	No IR (Cloud Cover)

Copyright © 2013 National Geographic Society, I-cubed