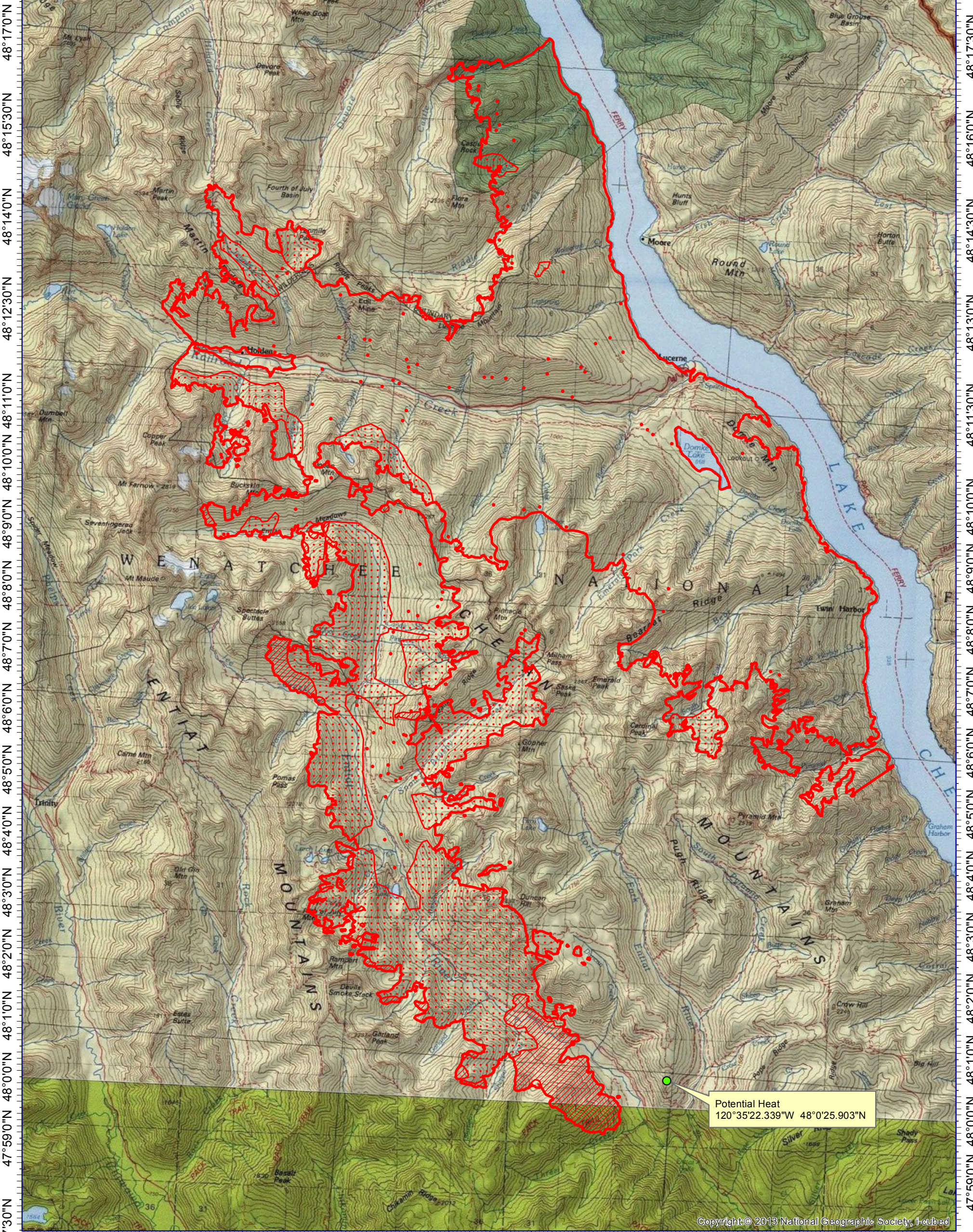


120°52'0"W 120°50'0"W 120°48'0"W 120°46'0"W 120°44'0"W 120°42'0"W 120°40'0"W 120°38'0"W 120°36'0"W 120°34'0"W 120°32'0"W 120°30'0"W



120°50'0"W 120°48'0"W 120°46'0"W 120°44'0"W 120°42'0"W 120°40'0"W 120°38'0"W 120°36'0"W 120°34'0"W 120°32'0"W 120°30'0"W



INFRARED MAP
 Wolverine (WA-OWF-000287)
 Flight: Aug 25, 2015 @ 2155 PD
 60,960 IR Acres
 IRIN (t): Dale Gough (Oregon)
 IRIN: Lance Brady (Colorado)



Legend

- Isolated Heat
- ▭ Heat Perimeter
- ▨ Intense Heat
- ▤ Scattered Heat

