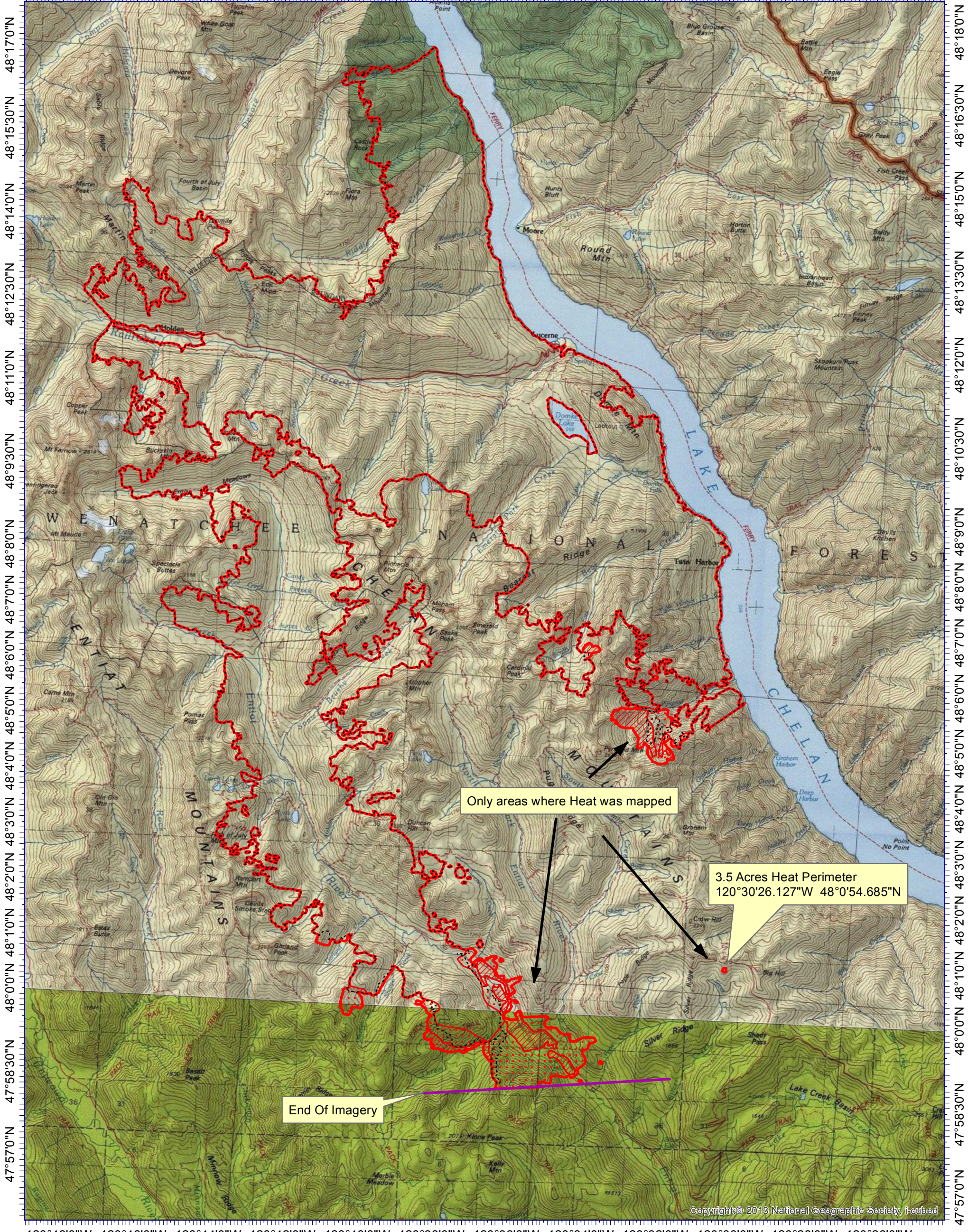


120°50'0"W 120°48'0"W 120°46'0"W 120°44'0"W 120°42'0"W 120°40'0"W 120°38'0"W 120°36'0"W 120°34'0"W 120°32'0"W 120°30'0"W 120°28'0"W 120°26'0"W



Only areas where Heat was mapped

3.5 Acres Heat Perimeter
120°30'26.127"W 48°0'54.685"N

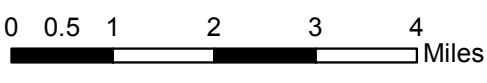
End Of Imagery



INFRARED MAP
 Wolverine (WA-OWF-000287)
 Flight: Aug 27, 2015 @ 02347 PDT
 64,849 IR Acres
 IRIN (t): Dale Gough (Oregon)
 IRIN: Lance Brady (Colorado)



- Legend**
- 20150827_2347 End Of Imagery
 - Previous Heat Perimeter (20150827_0104)
 - Heat Perimeter
 - Intense Heat
 - Scattered Heat



Copyright © 2013 National Geographic Society, Inc.