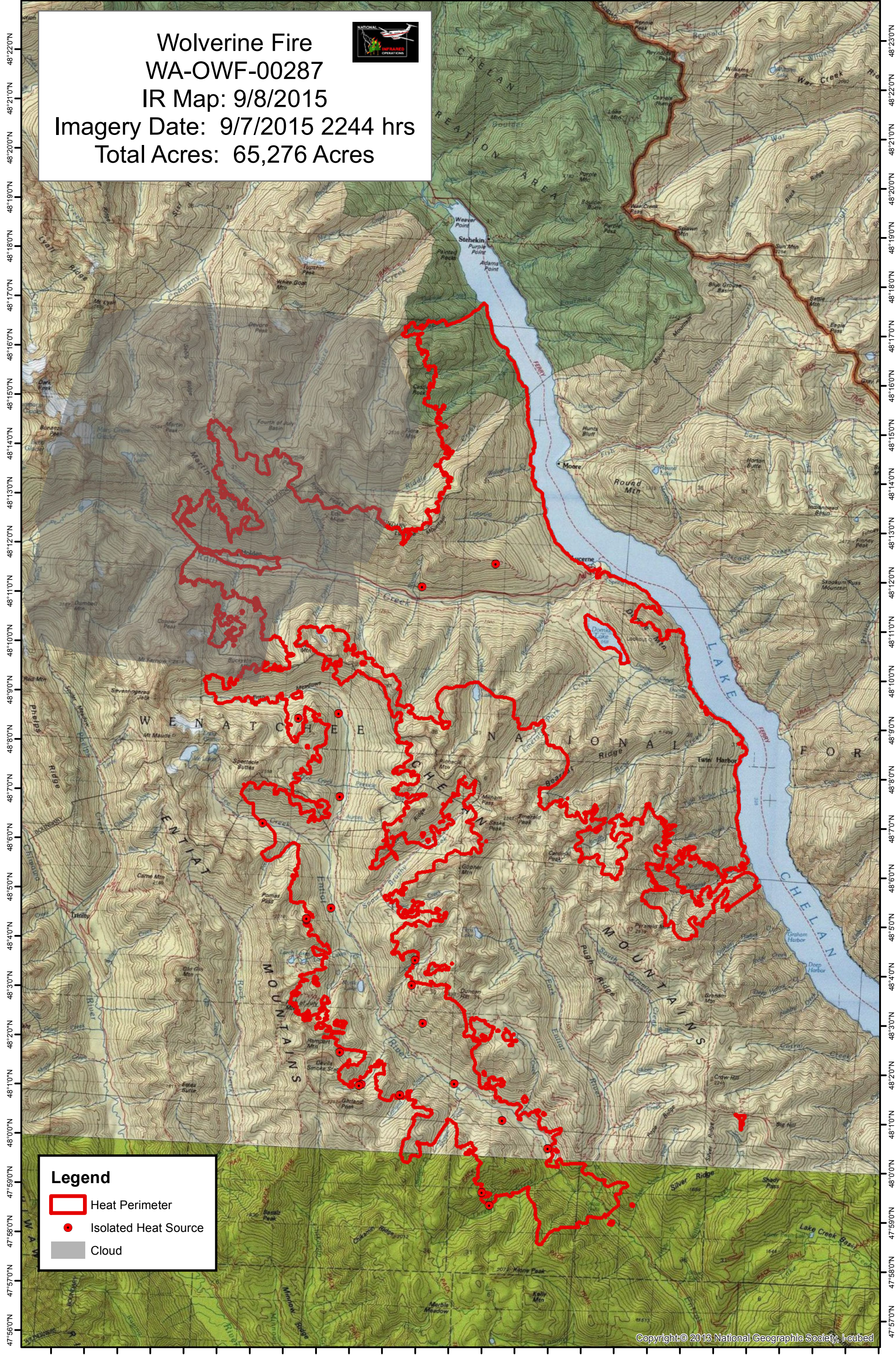


120°52'0"W 120°50'0"W 120°48'0"W 120°46'0"W 120°44'0"W 120°42'0"W 120°40'0"W 120°38'0"W 120°36'0"W 120°34'0"W 120°32'0"W 120°30'0"W 120°28'0"W

Wolverine Fire
WA-OWF-00287
IR Map: 9/8/2015
Imagery Date: 9/7/2015 2244 hrs
Total Acres: 65,276 Acres



Legend

- Heat Perimeter
- Isolated Heat Source
- Cloud

Copyright © 2013 National Geographic Society, I-cubed

IRIN: Lauren Miller
Map Produced: 20150908 0130 hrs

