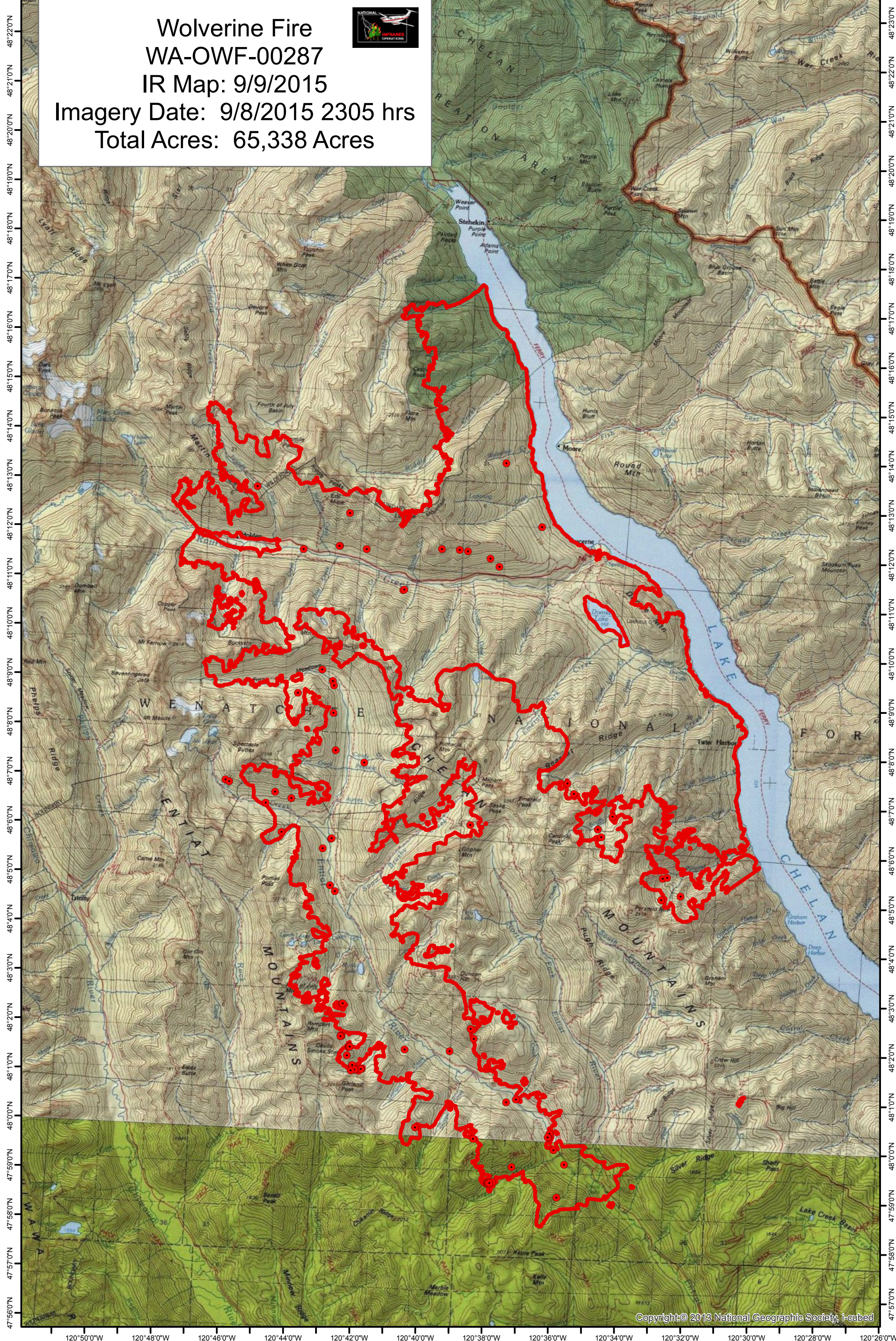




120°52'0"W 120°50'0"W 120°48'0"W 120°46'0"W 120°44'0"W 120°42'0"W 120°40'0"W 120°38'0"W 120°36'0"W 120°34'0"W 120°32'0"W 120°30'0"W 120°28'0"W

**Wolverine Fire**  
**WA-OWF-00287**  
**IR Map: 9/9/2015**  
**Imagery Date: 9/8/2015 2305 hrs**  
**Total Acres: 65,338 Acres**



Copyright © 2013 National Geographic Society, I-cubed

IRIN: Lauren Miller  
Map Produced: 20150909 0130 hrs

 Heat Perimeter      Isolated Heat Source

0     2 Miles

