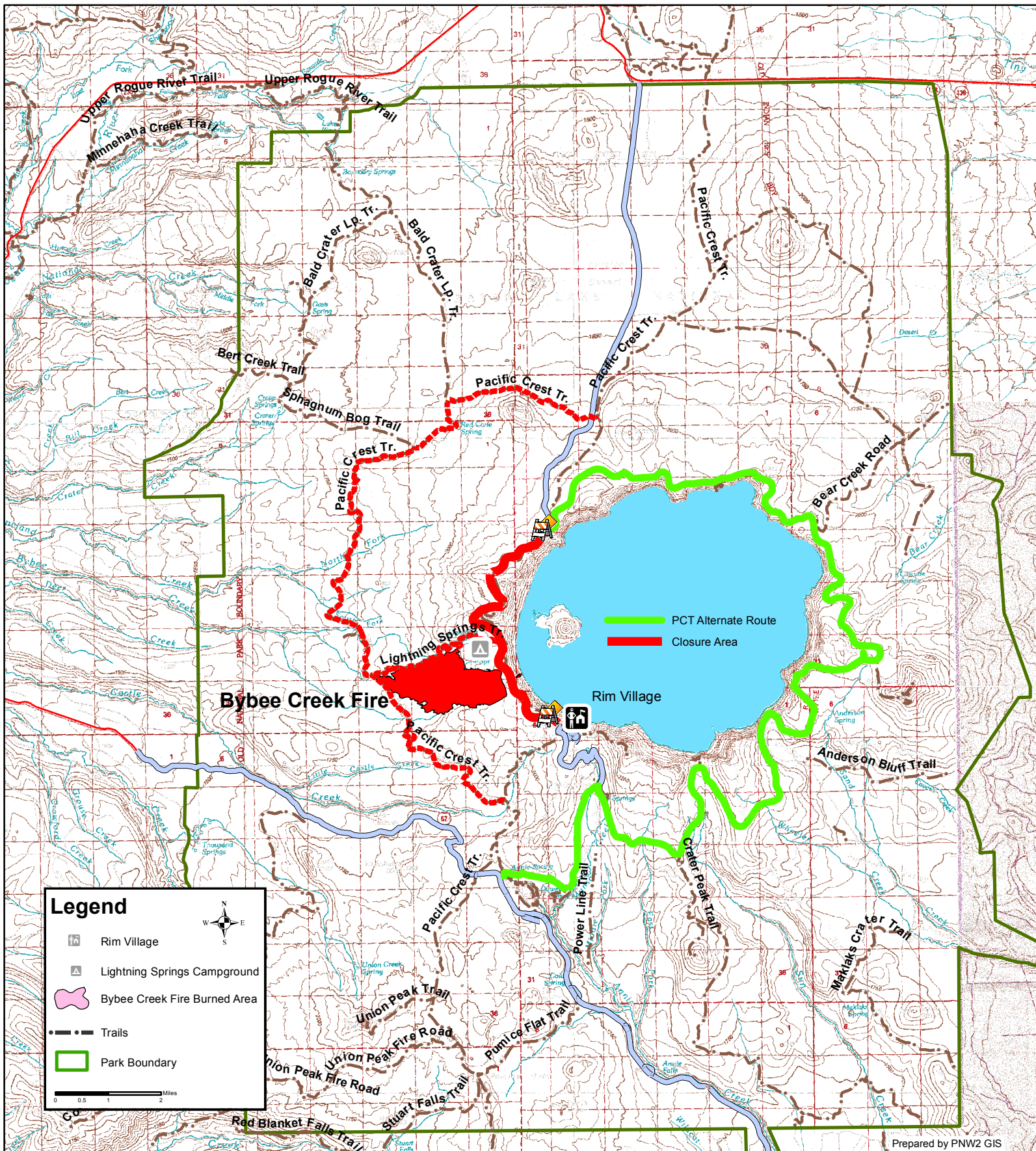


**Bybee Creek Fire  
Information Map  
08/06/2016  
1,116 Acres  
45% Contained**



**Closure: The Pacific Crest Trail is closed from Dutton Creek Camp north to the PCT parking lot on North Entrance Road. The Rim Trail is closed between Rim Village and North Junction, PCT hikers should use East Rim Drive as an alternative route. Lightning Springs Trail and backcountry camp are closed. The West Rim Drive from Rim Village to North Junction is temporarily closed.**



— PCT Alternate Route  
— Closure Area

**Legend**

- Rim Village
- Lightning Springs Campground
- Bybee Creek Fire Burned Area
- Trails
- Park Boundary

0 0.5 1 2 Miles