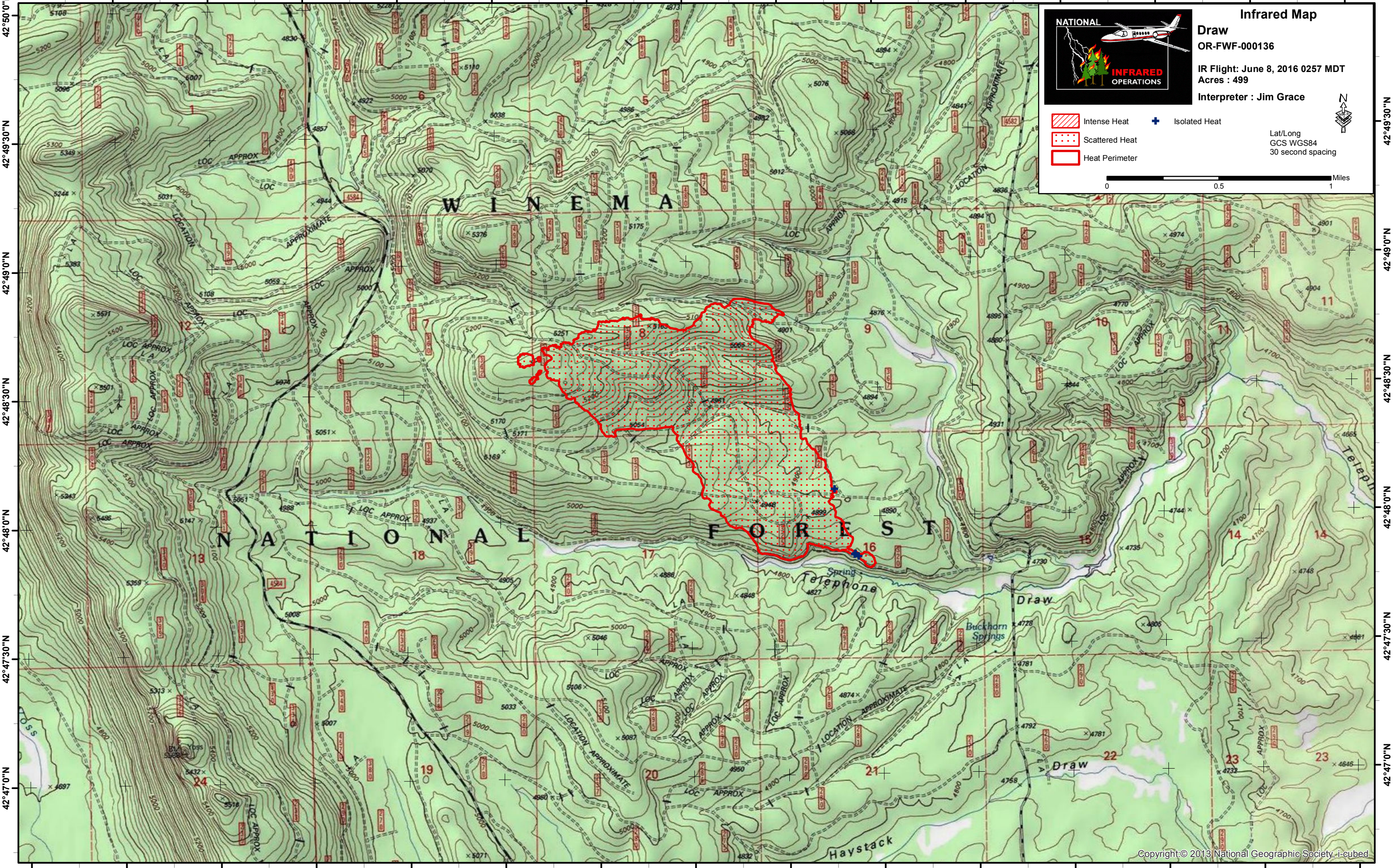


121°36'0"W 121°35'30"W 121°35'0"W 121°34'30"W 121°34'0"W 121°33'30"W 121°33'0"W 121°32'30"W 121°32'0"W 121°31'30"W 121°31'0"W 121°30'30"W 121°30'0"W 121°29'30"W



Infrared Map
Draw
OR-FWF-000136
IR Flight: June 8, 2016 0257 MDT
Acres : 499
Interpreter : Jim Grace

Legend:
[Red hatched] Intense Heat
[Red dots] Scattered Heat
[Red outline] Heat Perimeter
[Blue plus] Isolated Heat

Lat/Long
GCS WGS84
30 second spacing

0 0.5 1 Miles

121°36'30"W 121°36'0"W 121°35'30"W 121°35'0"W 121°34'30"W 121°34'0"W 121°33'30"W 121°33'0"W 121°32'30"W 121°32'0"W 121°31'30"W 121°31'0"W 121°30'30"W 121°30'0"W 121°29'30"W

42°50'0"N
42°49'30"N
42°49'0"N
42°48'30"N
42°48'0"N
42°47'30"N
42°47'0"N

42°49'30"N
42°49'0"N
42°48'30"N
42°48'0"N
42°47'30"N
42°47'0"N