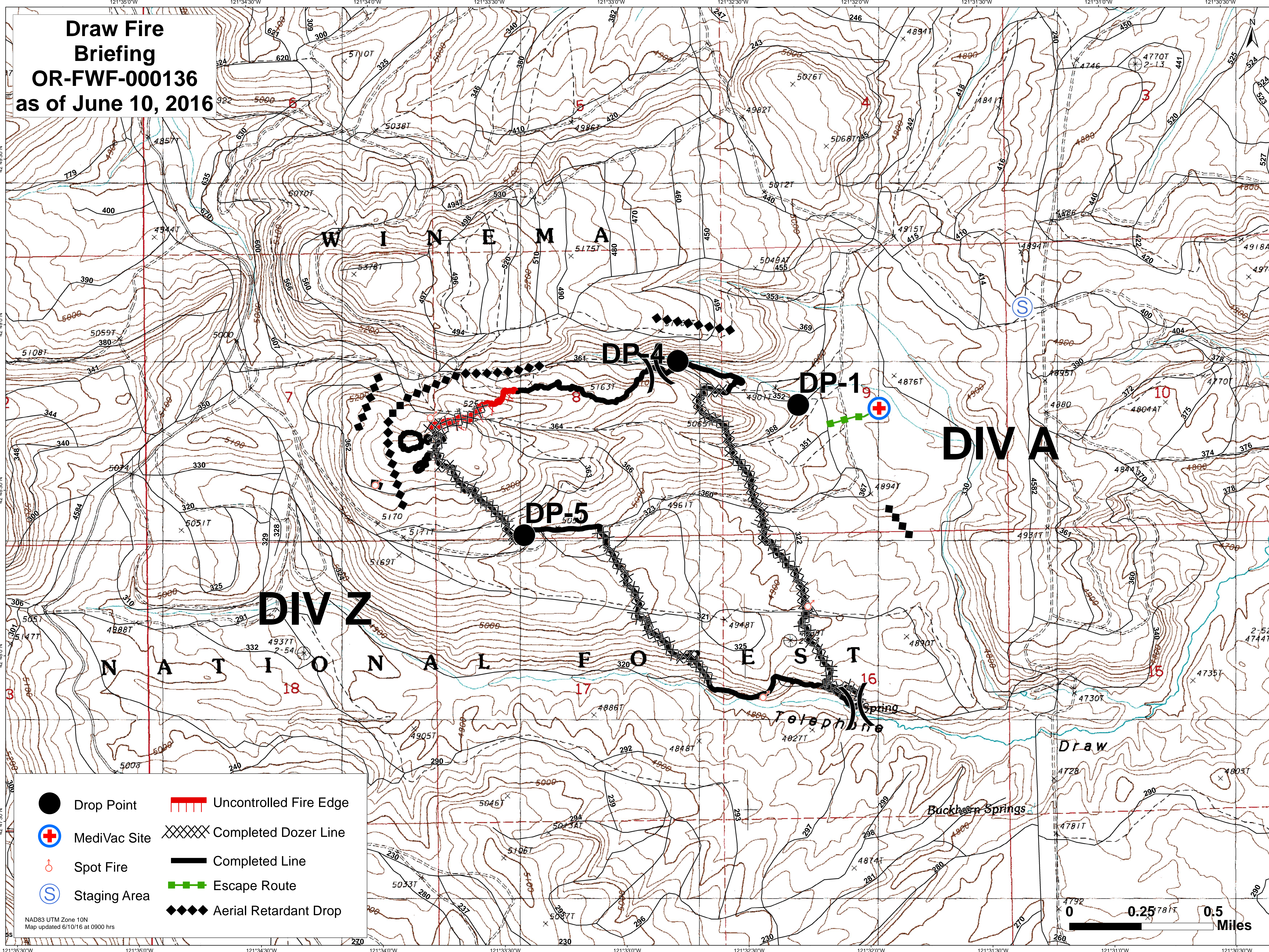





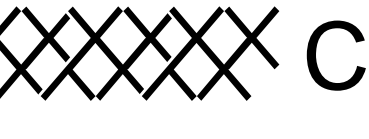





**Draw Fire Briefing**  
**OR-FWF-000136**  
**as of June 10, 2016**



-  Drop Point
-  MediVac Site
-  Spot Fire
-  Staging Area
-  Uncontrolled Fire Edge
-  Completed Dozer Line
-  Completed Line
-  Escape Route
-  Aerial Retardant Drop

NAD83 UTM Zone 10N  
 Map updated 6/10/16 at 0900 hrs

0 0.25 0.5 Miles