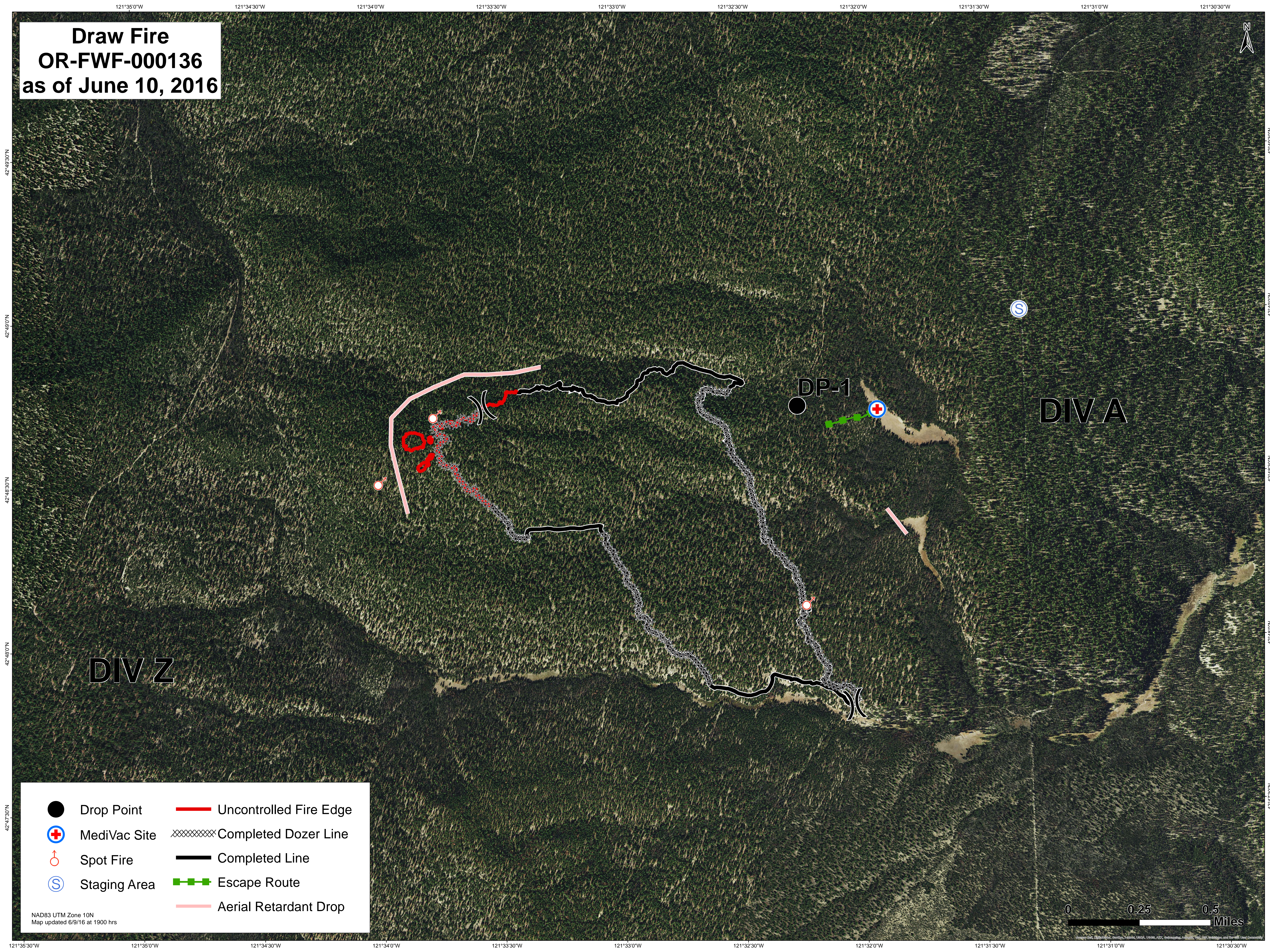











Draw Fire
OR-FWF-000136
as of June 10, 2016

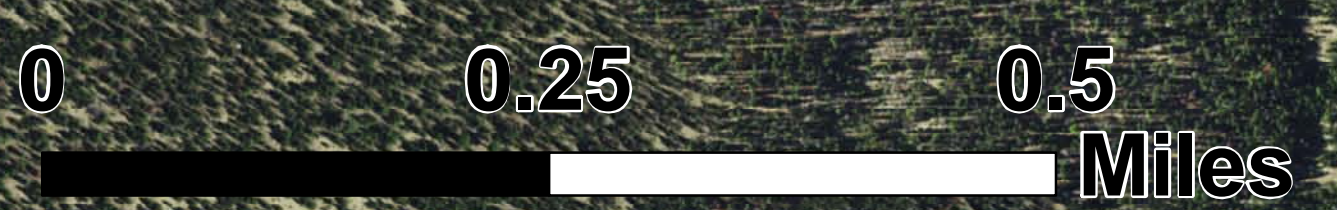


DIV Z

DIV A

 Drop Point	 Uncontrolled Fire Edge
 MediVac Site	 Completed Dozer Line
 Spot Fire	 Completed Line
 Staging Area	 Escape Route
	 Aerial Retardant Drop

NAD83 UTM Zone 10N
Map updated 6/9/16 at 1900 hrs



121°35'0"W 121°35'0"W 121°34'30"W 121°34'0"W 121°33'30"W 121°33'0"W 121°32'30"W 121°32'0"W 121°31'30"W 121°31'0"W 121°30'30"W