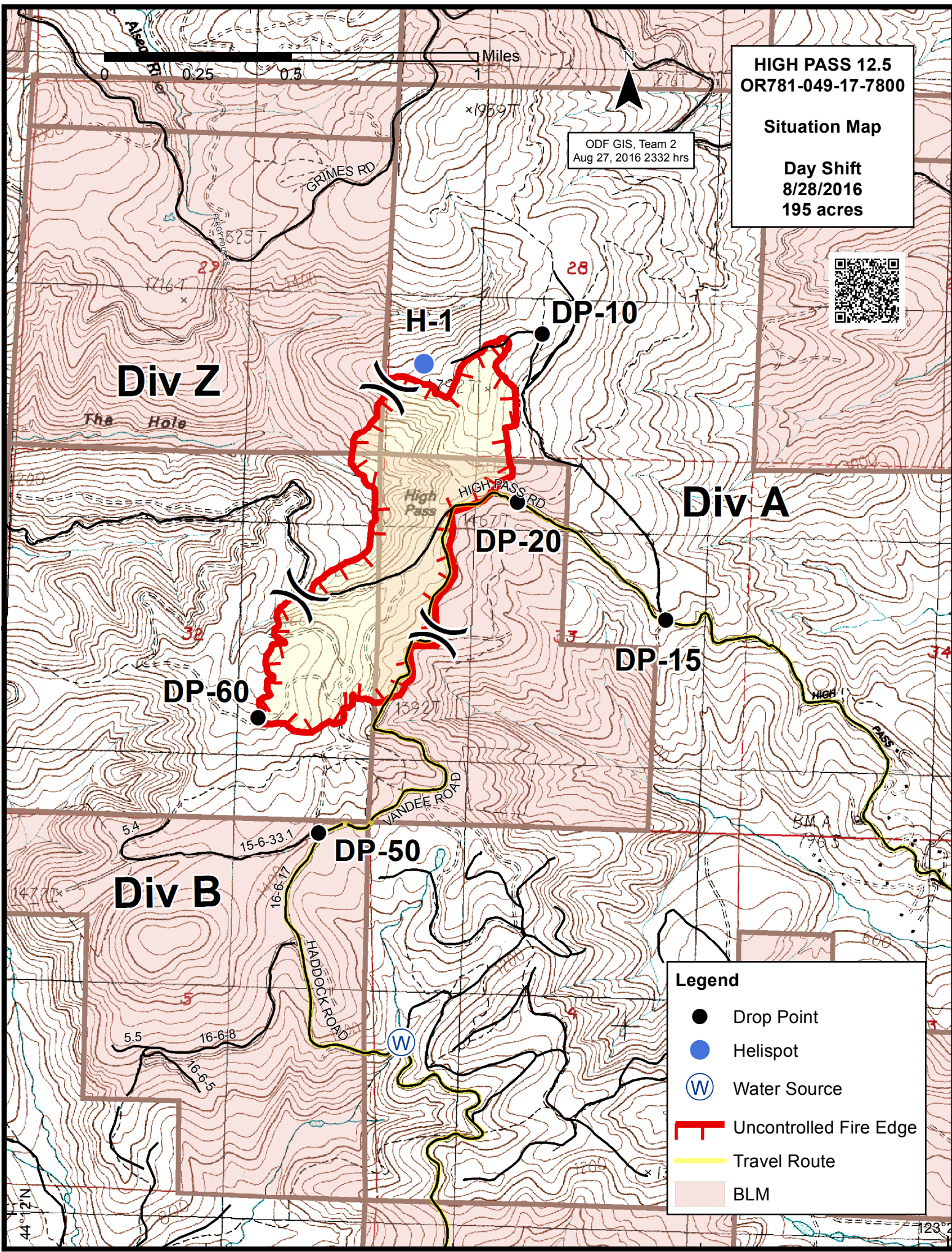


HIGH PASS 12.5
OR781-049-17-7800

Situation Map

Day Shift
8/28/2016
195 acres

ODF GIS, Team 2
 Aug 27, 2016 2332 hrs



Legend

- Drop Point
- Helispot
- Ⓜ Water Source
- ┌ Uncontrolled Fire Edge
- Travel Route
- BLM

44° 12' N

123° 24' W