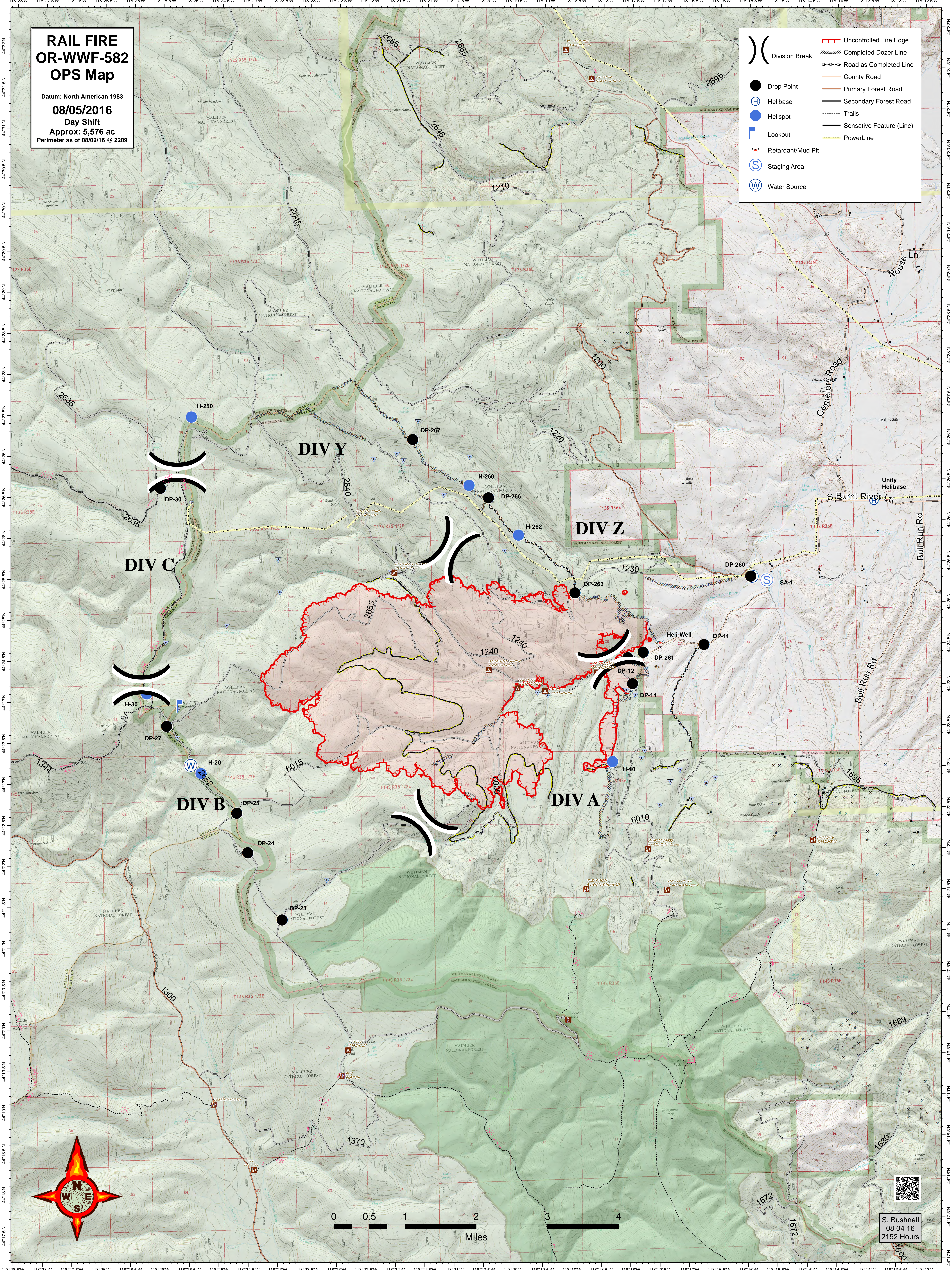


RAIL FIRE OR-WWF-582 OPS Map

Datum: North American 1983
08/05/2016
Day Shift
Approx: 5,576 ac
Perimeter as of 08/02/16 @ 2209

- Uncontrolled Fire Edge
- Completed Dozer Line
- Road as Completed Line
- County Road
- Primary Forest Road
- Secondary Forest Road
- Trails
- PowerLine
- Drop Point
- Helibase
- Helispot
- Lookout
- Retardant/Mud Pit
- Staging Area
- Water Source



S. Bushnell
08 04 16
2152 Hours