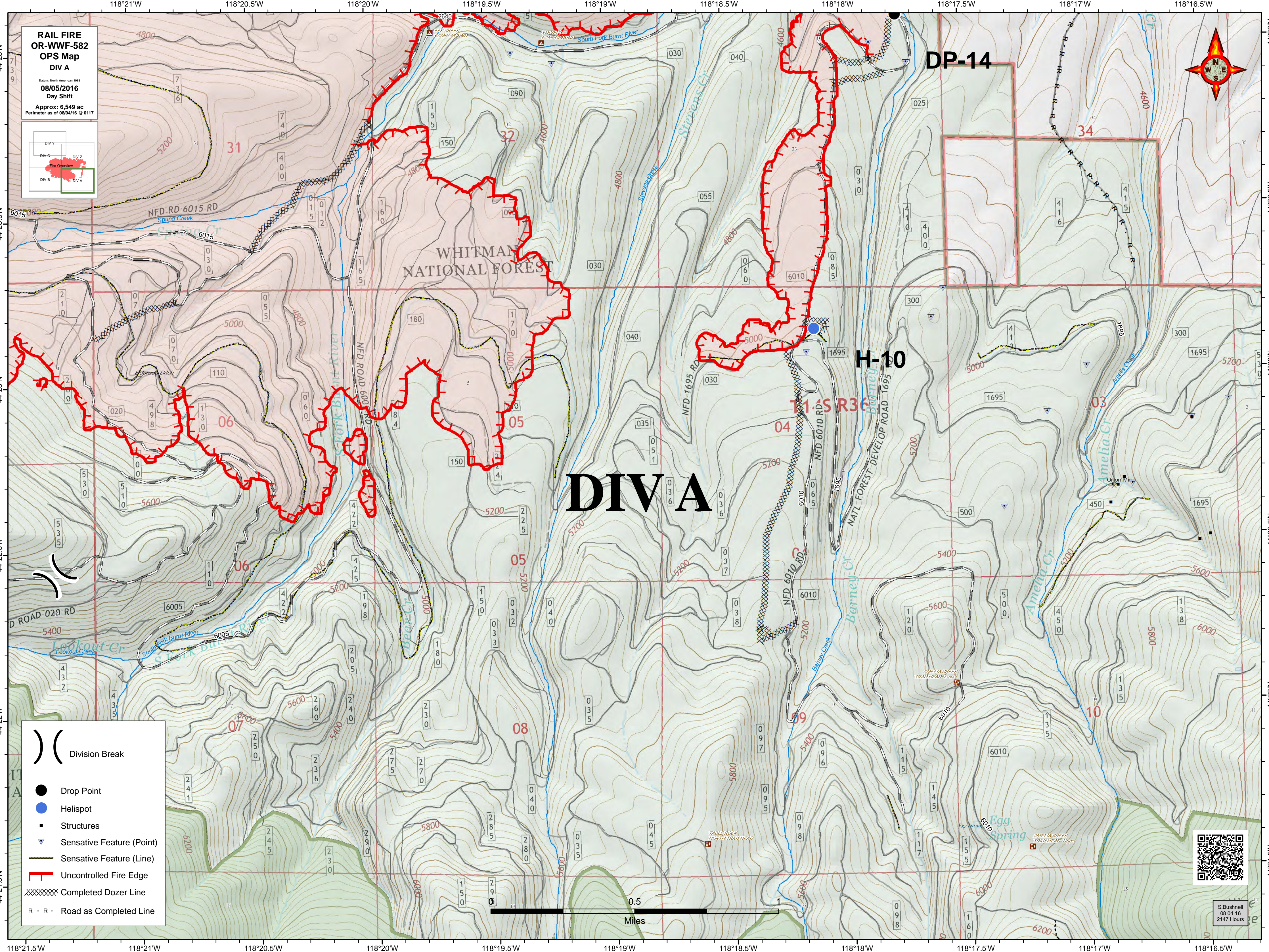


**RAIL FIRE  
OR-WWF-582  
OPS Map  
DIV A**

Date: North American 1983  
**08/05/2016**  
 Day Shift

Approx: 6,549 ac  
 Perimeter as of 08/04/16 @ 0117



**DIV A**

**DP-14**

**H-10**

**T15R36**

**( )** Division Break

**●** Drop Point

**●** Helispot

**■** Structures

**▼** Sensitive Feature (Point)

**—** Sensitive Feature (Line)

**┃** Uncontrolled Fire Edge

**XXXXXX** Completed Dozer Line

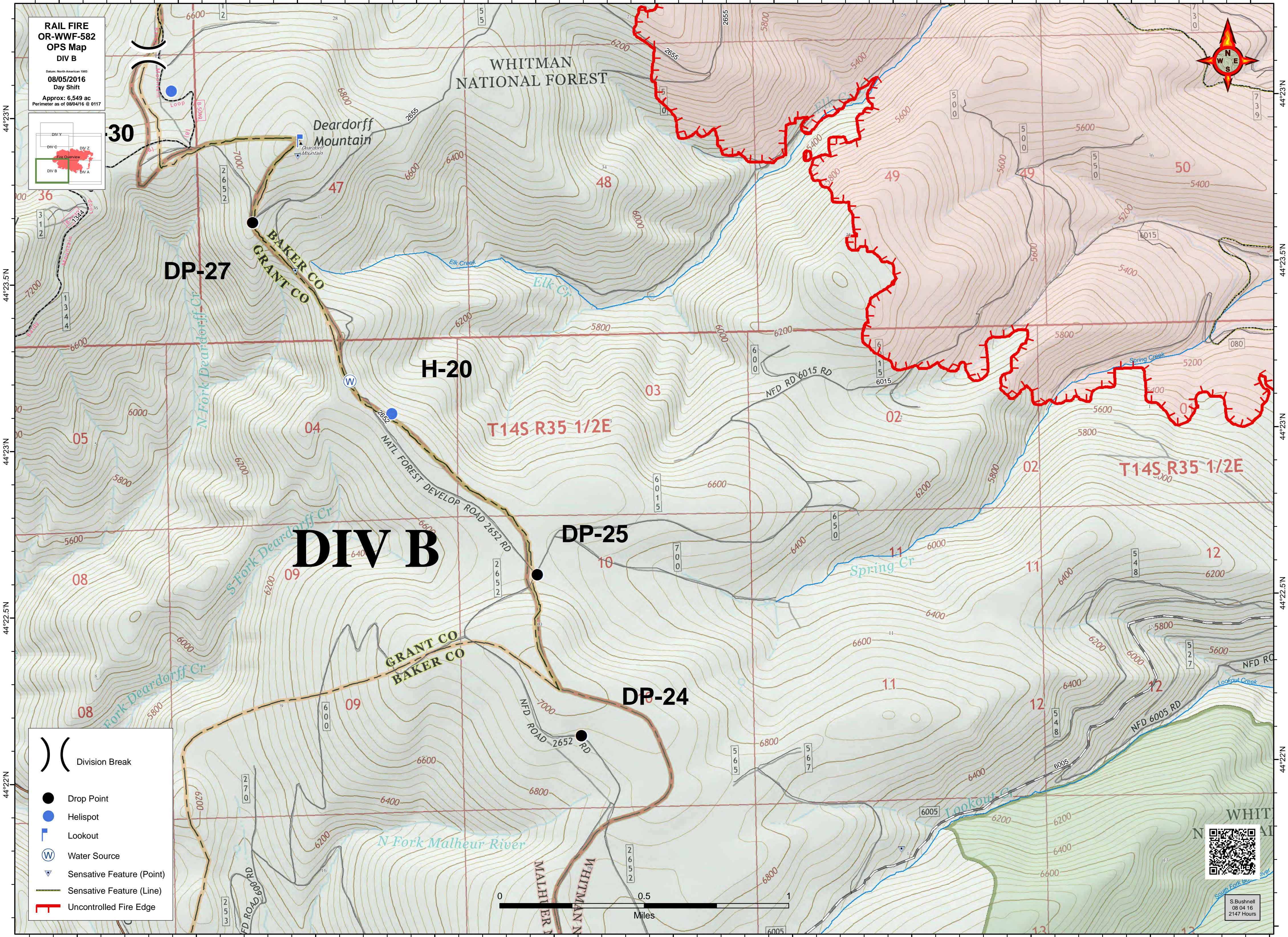
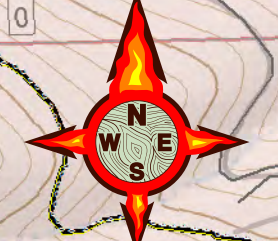
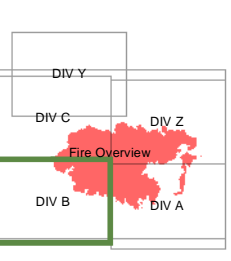
**R - R -** Road as Completed Line



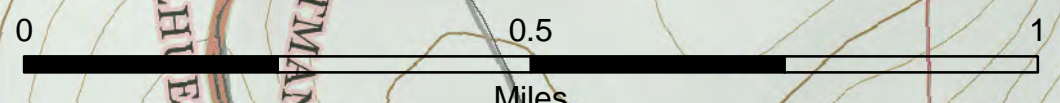
S. Bushnell  
 08/04/16  
 2147 Hours

118°26.5'W 118°26'W 118°25.5'W 118°25'W 118°24.5'W 118°23'W 118°23.5'W 118°23'W 118°22.5'W 118°22'W 118°21.5'W

**RAIL FIRE  
OR-WWF-582  
OPS Map  
DIV B**  
Datum: North American 1983  
**08/05/2016**  
Day Shift  
Approx: 6,549 ac  
Perimeter as of 08/04/16 @ 0117



- Division Break
- Drop Point
- Helispot
- Lookout
- Water Source
- Sensitive Feature (Point)
- Sensitive Feature (Line)
- Uncontrolled Fire Edge



S. Bushnell  
08/04/16  
2147 Hours

118°26.5'W 118°26'W 118°25.5'W 118°25'W 118°24.5'W 118°23'W 118°23.5'W 118°23'W 118°22.5'W 118°22'W 118°21.5'W

**RAIL FIRE  
OR-WWF-582  
OPS Map  
DIV C**

Date: North American 1983  
**08/05/2016**  
 Day Shift

Approx: 6,549 ac  
 Perimeter as of 08/04/16 @ 0117



# DIV Y

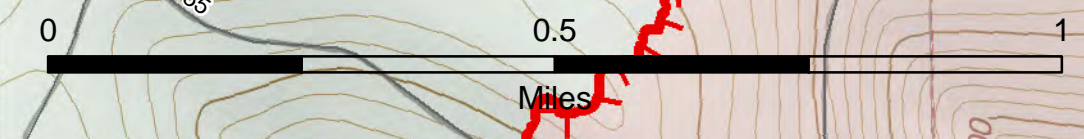
# DIV C

## DP-30

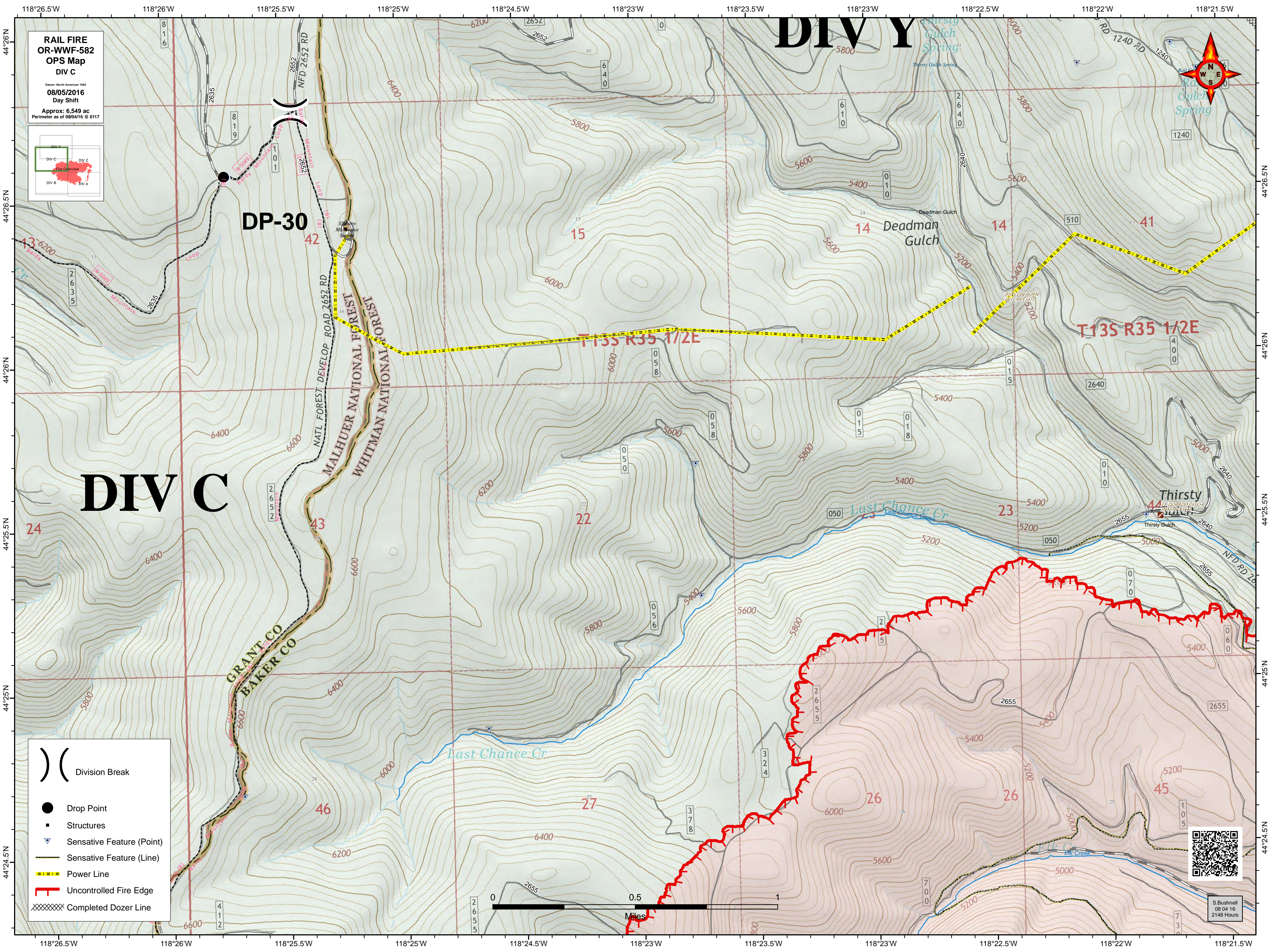
### T135 R35 1/2E

### T13S R35 1/2E

- Division Break
- Drop Point
- Structures
- Sensitive Feature (Point)
- Sensitive Feature (Line)
- Power Line
- Uncontrolled Fire Edge
- Completed Dozer Line



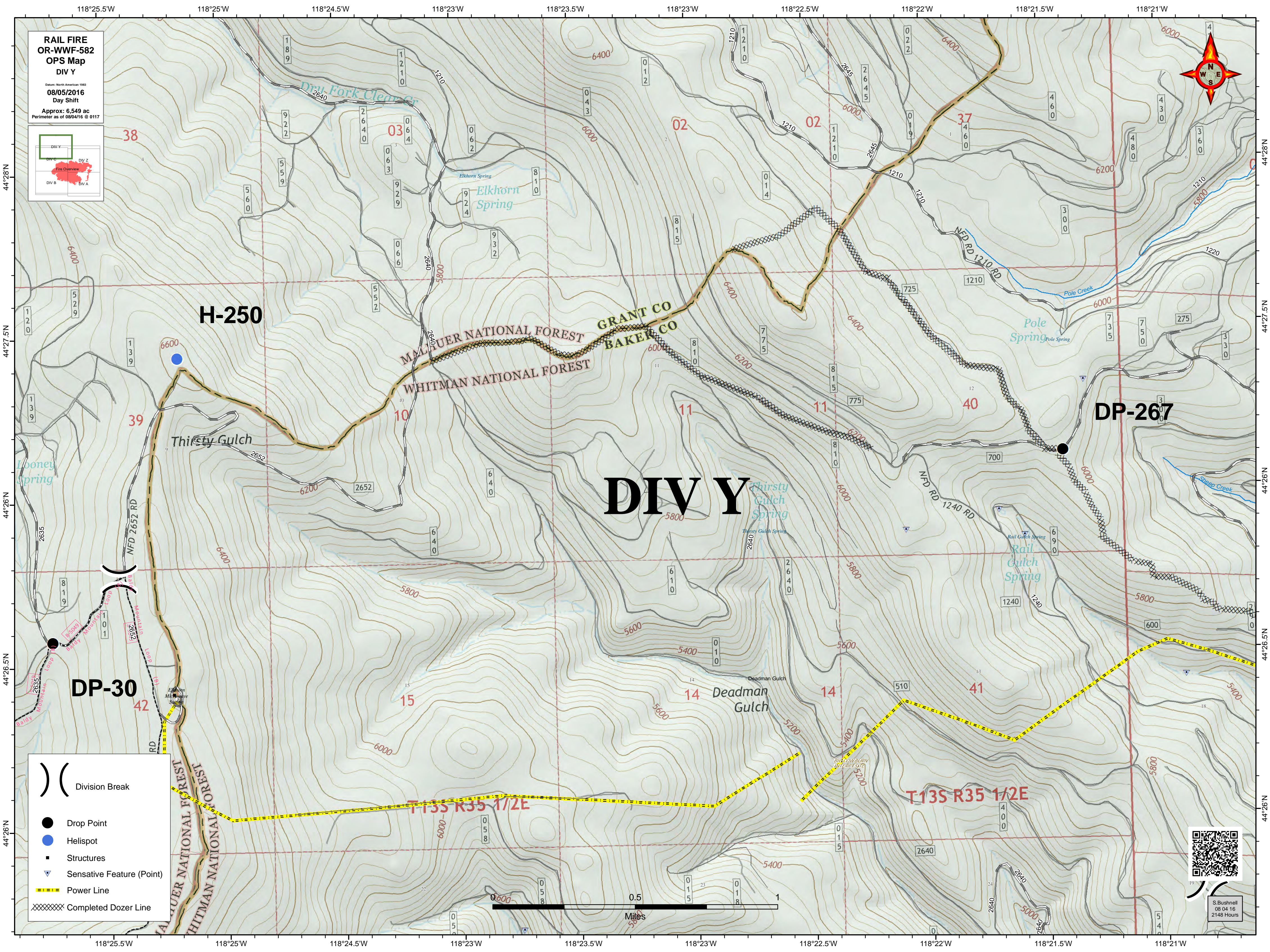
S. Bushnell  
 08/04/16  
 2148 Hours



**RAIL FIRE  
OR-WWF-582  
OPS Map  
DIV Y**

Date: North American 1983  
**08/05/2016**  
 Day Shift

Approx: 6,549 ac  
 Perimeter as of 08/04/16 @ 0117



**H-250**

**DP-267**

**DP-30**

**DIV Y**

**)) (** Division Break

**●** Drop Point

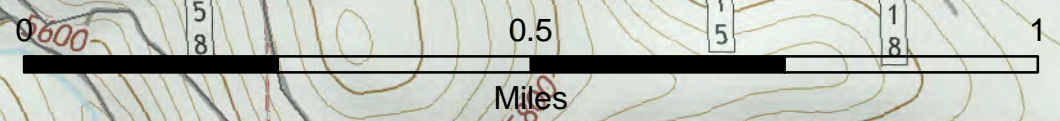
**●** Helispot

**■** Structures

**▼** Sensitive Feature (Point)

**---** Power Line

**-----** Completed Dozer Line

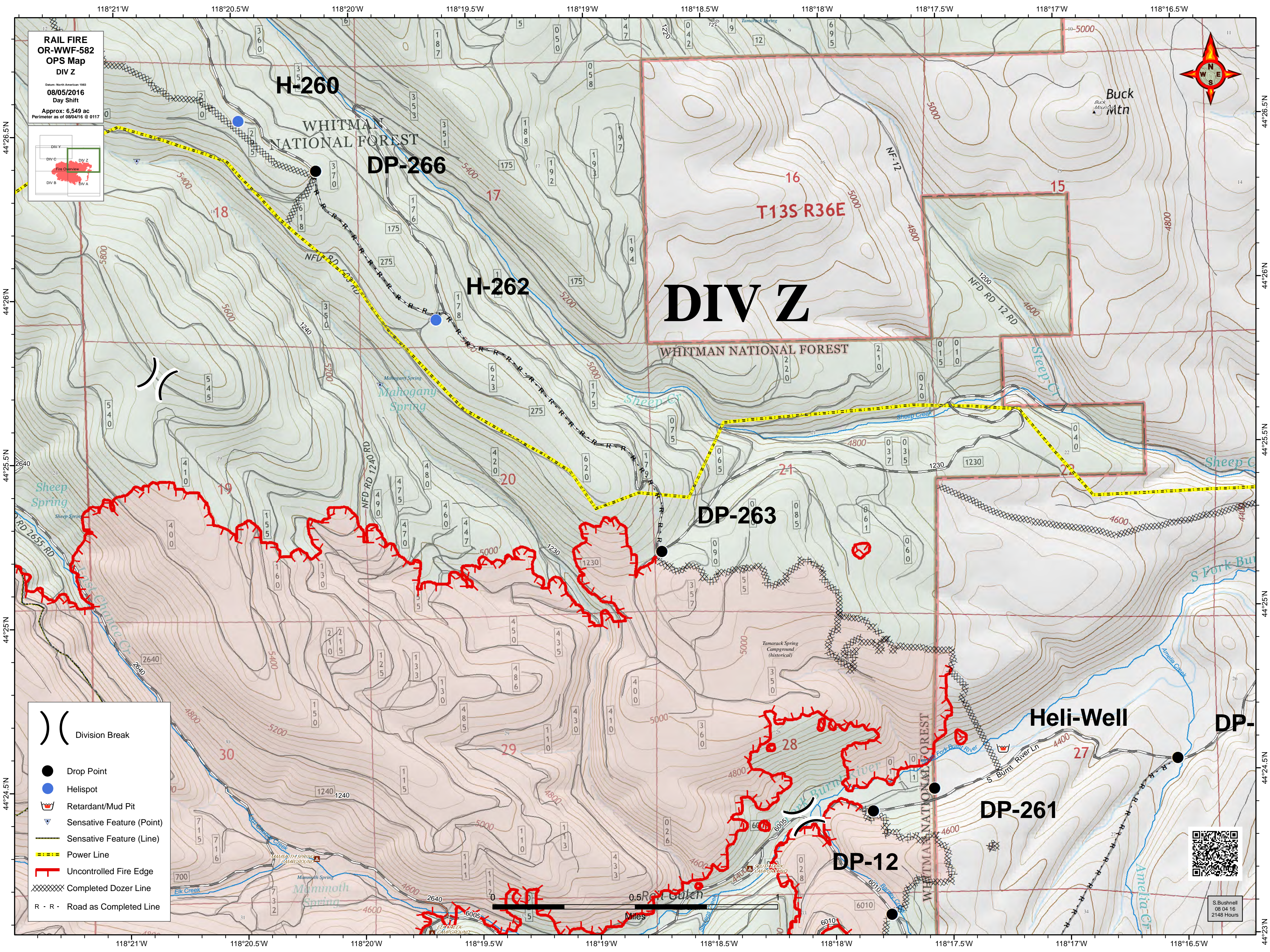


S. Bushnell  
 08/04/16  
 2148 Hours

**RAIL FIRE  
OR-WWF-582  
OPS Map  
DIV Z**

Date: North American 1983  
08/05/2016  
Day Shift

Approx: 6,549 ac  
Perimeter as of 08/04/16 @ 0117

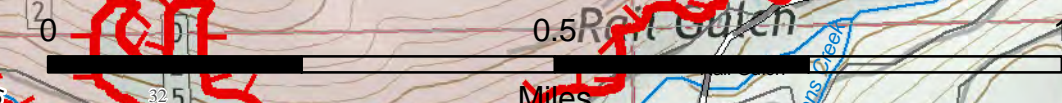


**Legend**

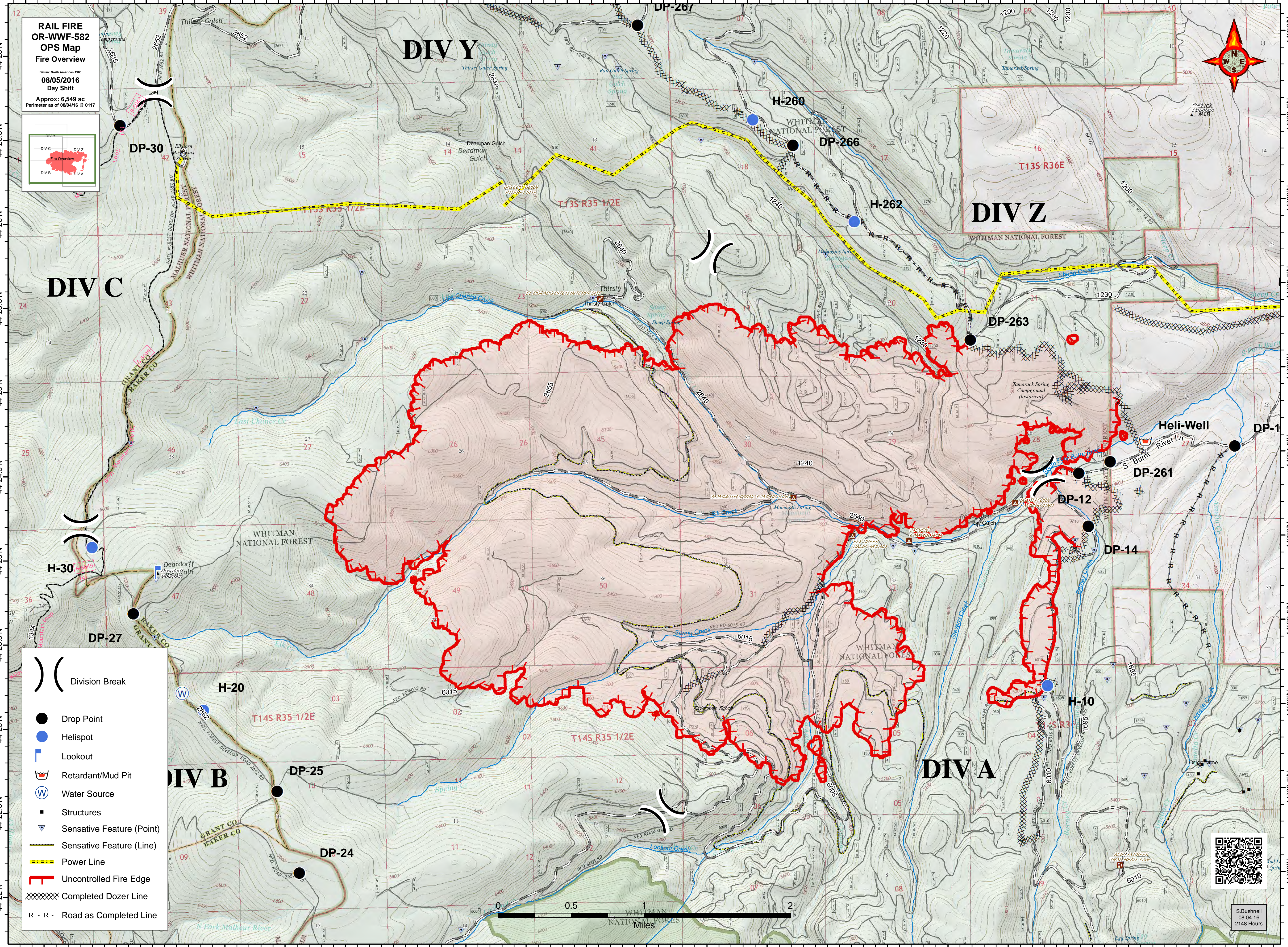
- Division Break
- Drop Point
- Helispot
- Retardant/Mud Pit
- Sensitive Feature (Point)
- Sensitive Feature (Line)
- Power Line
- Uncontrolled Fire Edge
- Completed Dozer Line
- Road as Completed Line



S. Bushnell  
08/04/16  
2148 Hours



118°26.5'W 118°26'W 118°25.5'W 118°25'W 118°24.5'W 118°23'W 118°23.5'W 118°23'W 118°22.5'W 118°22'W 118°21.5'W 118°21'W 118°20.5'W 118°20'W 118°19.5'W 118°19'W 118°18.5'W 118°18'W 118°17.5'W 118°17'W 118°16.5'W



**RAIL FIRE  
OR-WWF-582  
OPS Map  
Fire Overview**

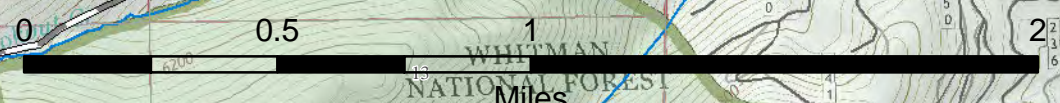
Date: North American 1983  
**08/05/2016**  
Day Shift

Approx: 6,549 ac  
Perimeter as of 08/04/16 @ 0117



**))** Division Break

- Drop Point
- Helispot
- Lookout
- Retardant/Mud Pit
- Water Source
- Structures
- Sensitive Feature (Point)
- Sensitive Feature (Line)
- Power Line
- Uncontrolled Fire Edge
- Completed Dozer Line
- R - R - Road as Completed Line



S. Bushnell  
08/04/16  
2148 Hours

118°26.5'W 118°26'W 118°25.5'W 118°25'W 118°24.5'W 118°23'W 118°23.5'W 118°23'W 118°22.5'W 118°22'W 118°21.5'W 118°21'W 118°20.5'W 118°20'W 118°19.5'W 118°19'W 118°18.5'W 118°18'W 118°17.5'W 118°17'W 118°16.5'W