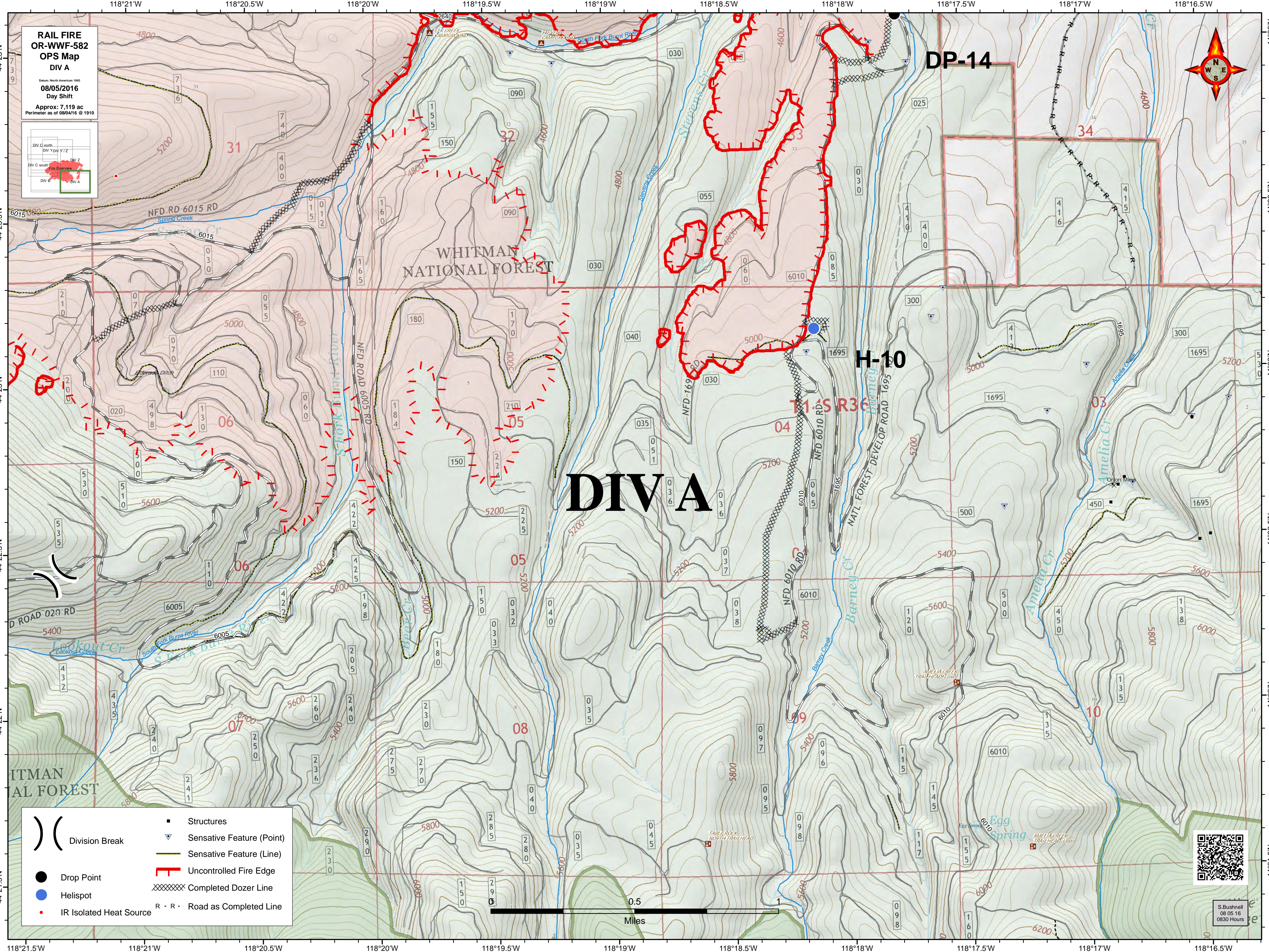


**RAIL FIRE
OR-WWF-582
OPS Map
DIV A**

Date: North American 1983
08/05/2016
Day Shift

Approx: 7,119 ac
Perimeter as of 08/04/16 @ 1910



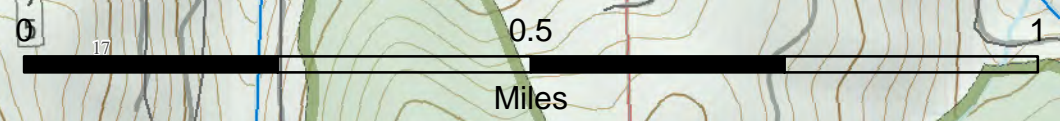
DIV A

DP-14

H-10

T15R36

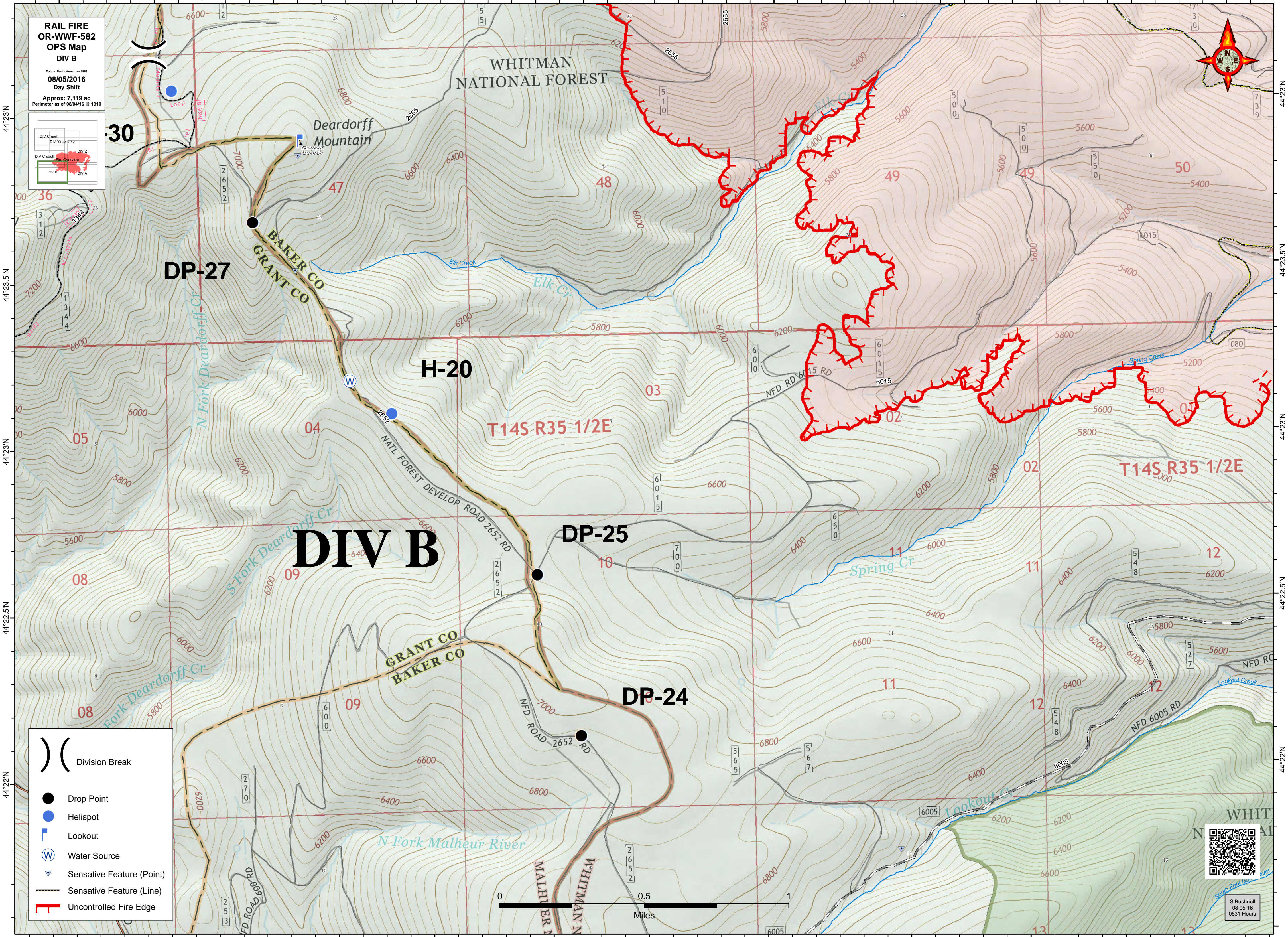
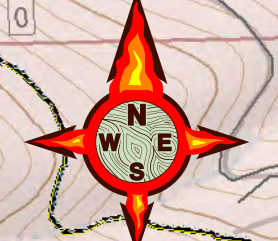
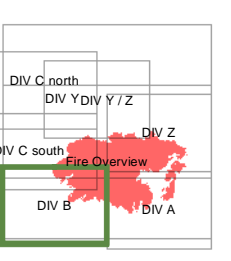
	Division Break		Structures
	Drop Point		Sensitive Feature (Point)
	Helispot		Sensitive Feature (Line)
	IR Isolated Heat Source		Uncontrolled Fire Edge
			Completed Dozer Line
			R - R - Road as Completed Line



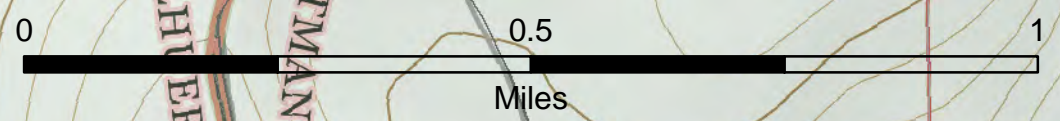
S. Bushnell
08/05/16
0830 Hours

118°26.5'W 118°26'W 118°25.5'W 118°25'W 118°24.5'W 118°23'W 118°23.5'W 118°23'W 118°22.5'W 118°22'W 118°21.5'W

**RAIL FIRE
OR-WWF-582
OPS Map
DIV B**
Date: North American 1983
08/05/2016
Day Shift
Approx: 7,119 ac
Perimeter as of 08/04/16 @ 1910



- Division Break
- Drop Point
- Helispot
- Lookout
- Water Source
- Sensitive Feature (Point)
- Sensitive Feature (Line)
- Uncontrolled Fire Edge



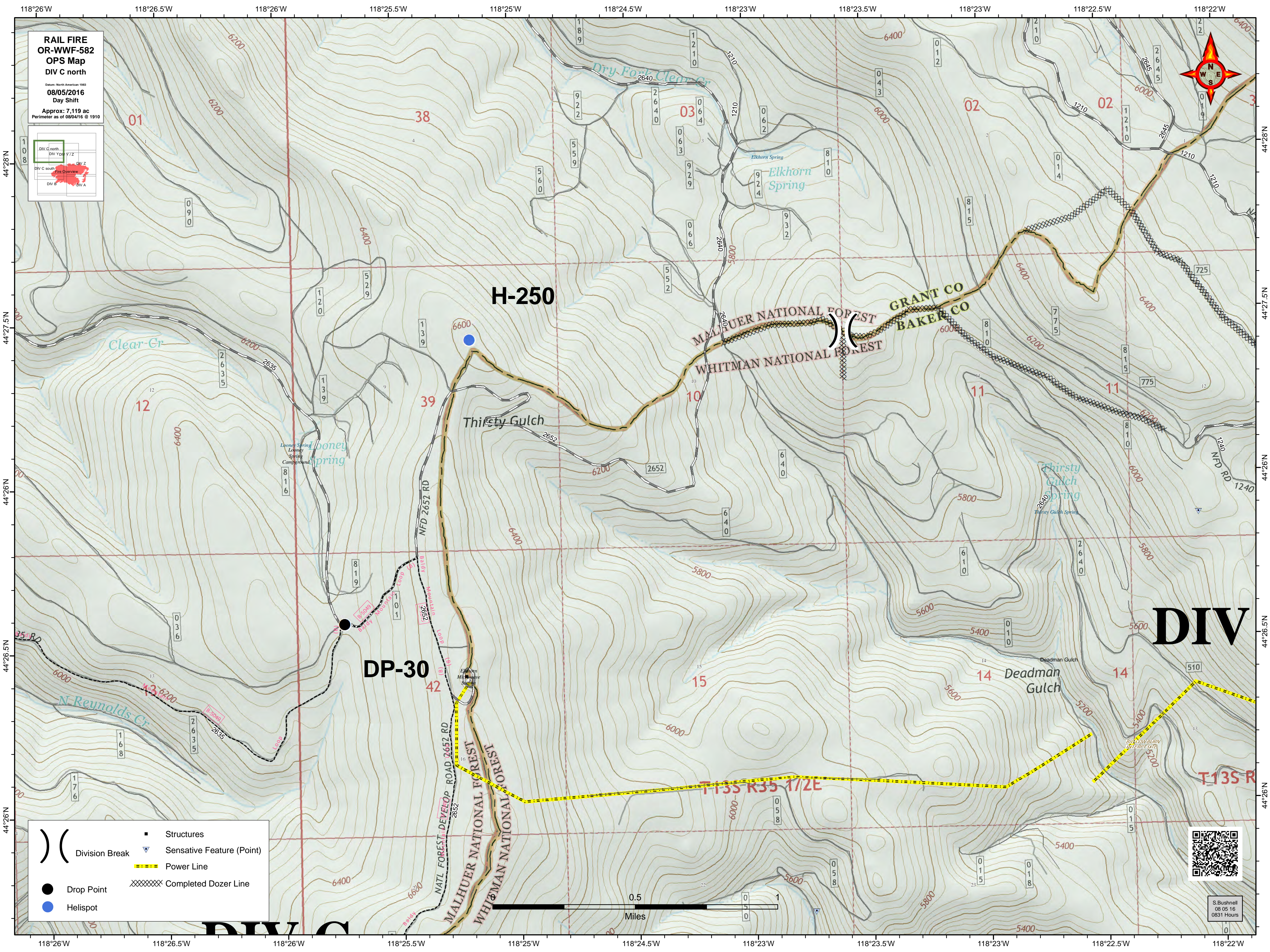
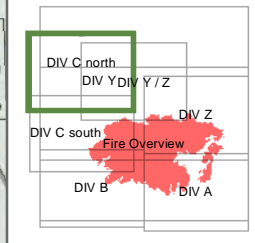
S. Bushnell
08/05/16
0831 Hours

118°26.5'W 118°26'W 118°25.5'W 118°25'W 118°24.5'W 118°23'W 118°23.5'W 118°23'W 118°22.5'W 118°22'W 118°21.5'W

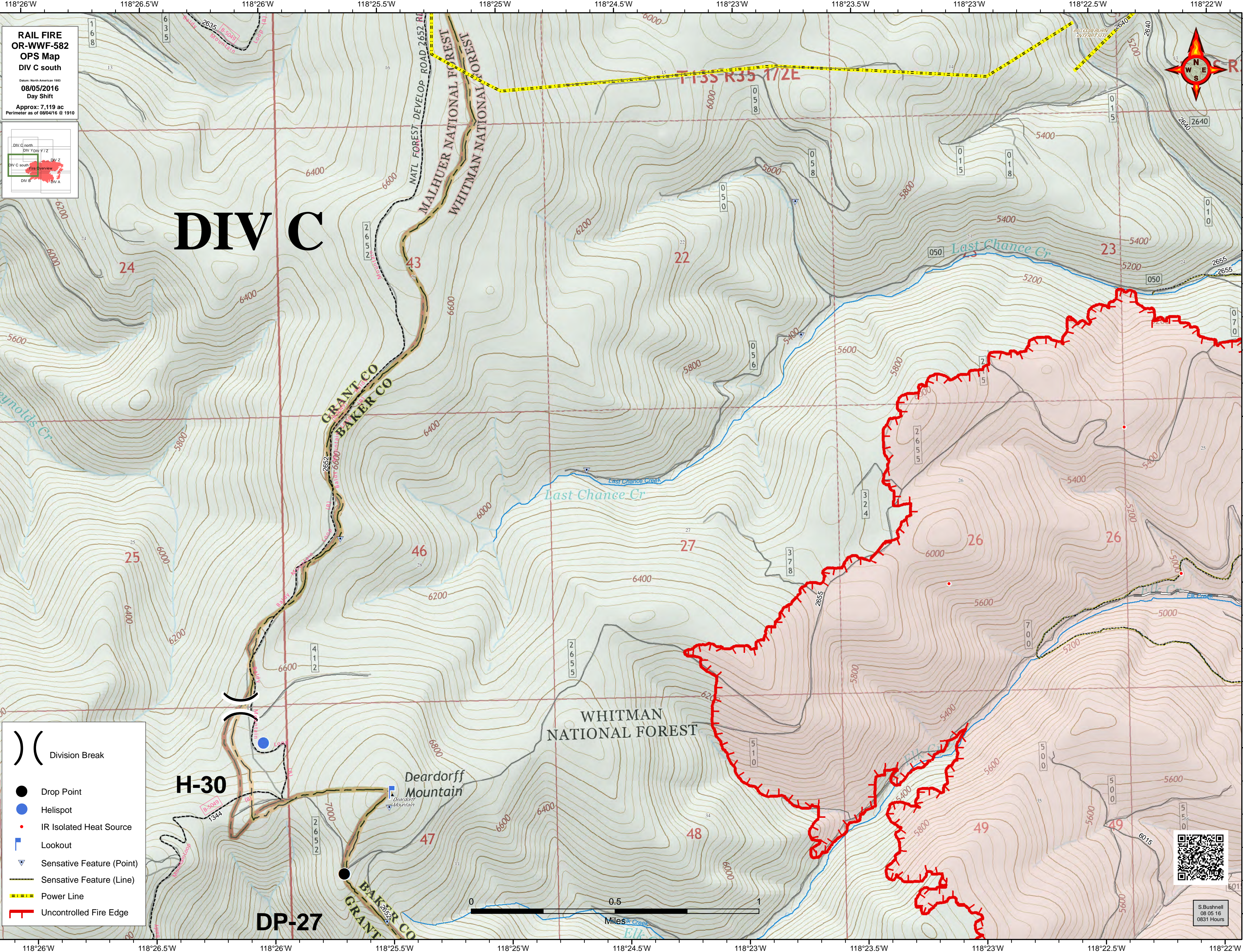
**RAIL FIRE
OR-WWF-582
OPS Map
DIV C north**

Date: North American 1983
08/05/2016
 Day Shift

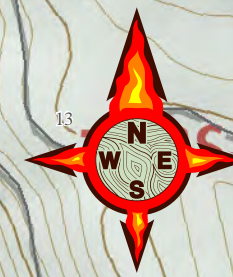
Approx: 7,119 ac
 Perimeter as of 08/04/16 @ 1910



S. Bushnell
 08 05 16
 0831 Hours



RAIL FIRE OR-WWF-582 OPS Map DIV C south
 Date: North American 1983
08/05/2016
 Day Shift
 Approx: 7,119 ac
 Perimeter as of 08/04/16 @ 1910



DIV C

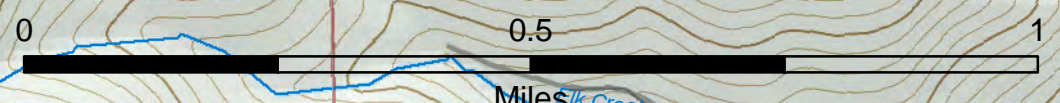
- Division Break
- Drop Point
- Helispot
- IR Isolated Heat Source
- Lookout
- Sensitive Feature (Point)
- Sensitive Feature (Line)
- Power Line
- Uncontrolled Fire Edge

H-30

DP-27

Deardorff Mountain

WHITMAN NATIONAL FOREST

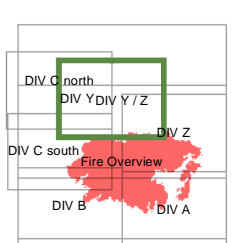
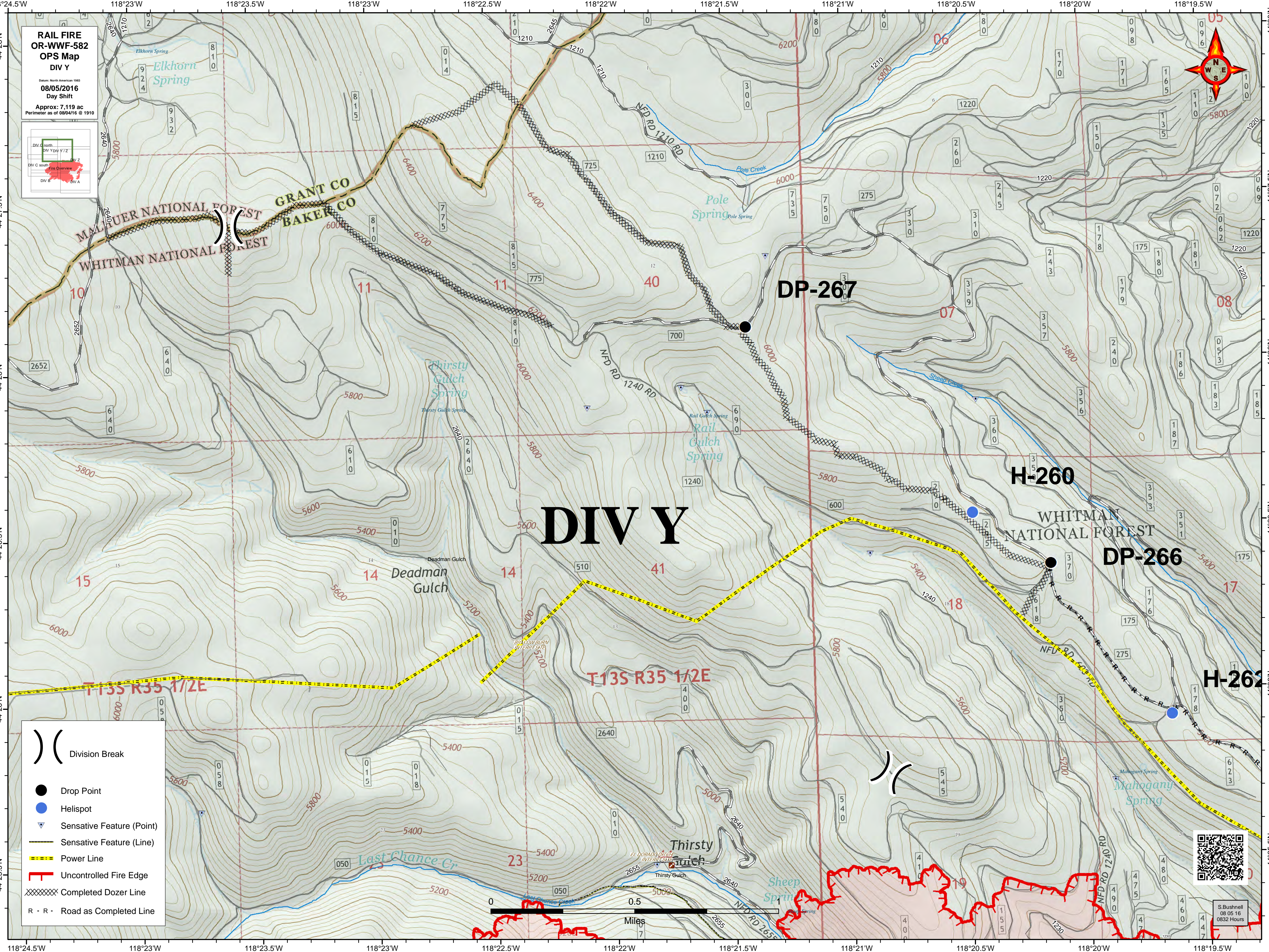
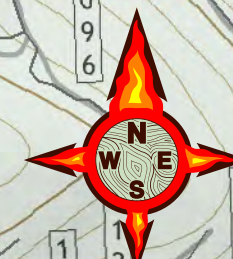


S. Bushnell
08/05/16
0831 Hours

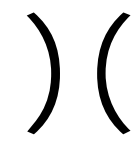

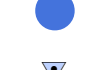




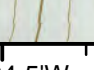

**RAIL FIRE
OR-WWF-582
OPS Map
DIV Y**

Date: North American 1983
08/05/2016
Day Shift

Approx: 7,119 ac
Perimeter as of 08/04/16 @ 1910

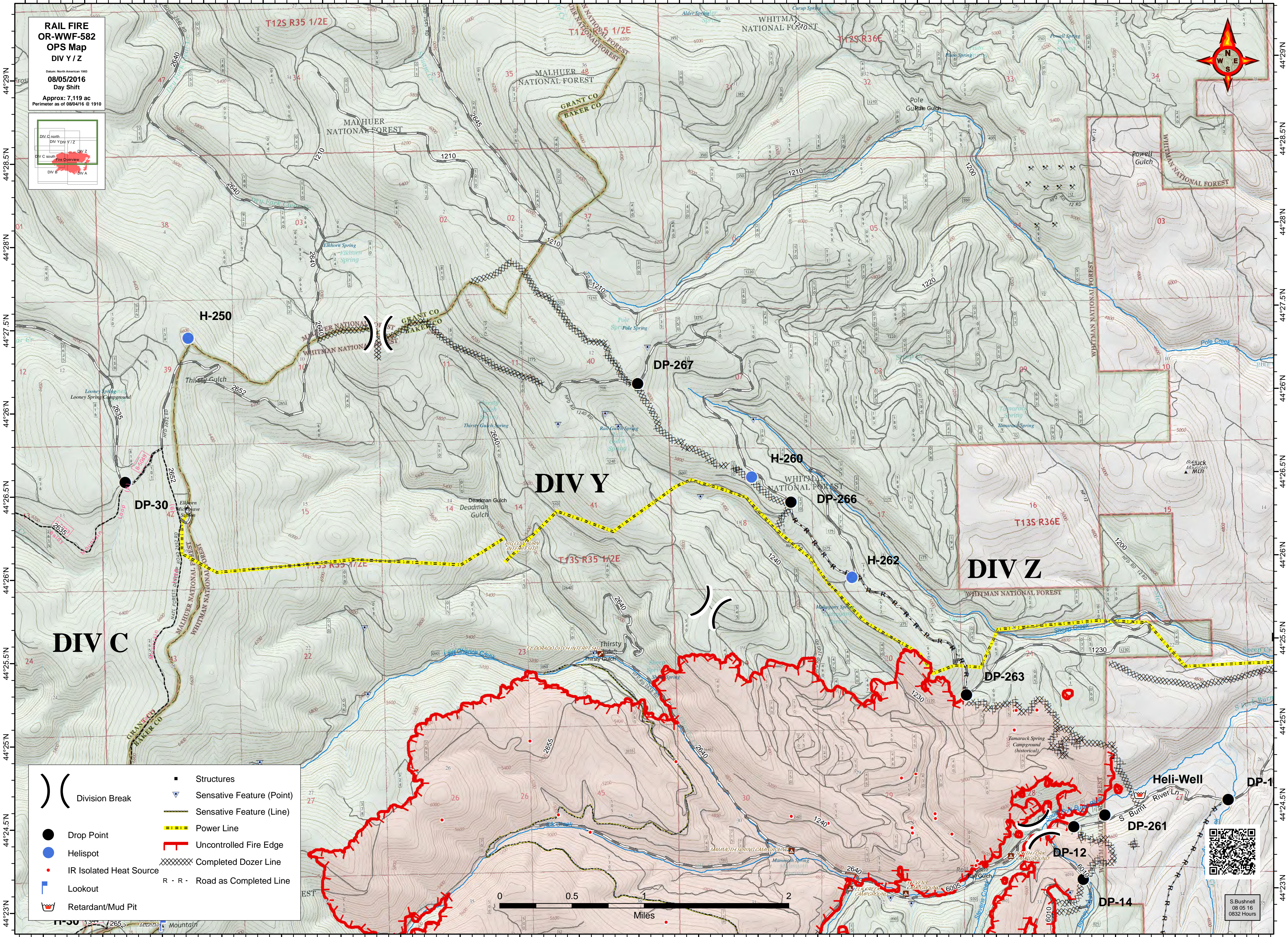
DIV Y

-  Division Break
-  Drop Point
-  Helispot
-  Sensitive Feature (Point)
-  Sensitive Feature (Line)
-  Power Line
-  Uncontrolled Fire Edge
-  Completed Dozer Line
-  R - R - Road as Completed Line



S. Bushnell
08 05 16
0832 Hours

118°26.5'W 118°26'W 118°25.5'W 118°25'W 118°24.5'W 118°23'W 118°23.5'W 118°23'W 118°22.5'W 118°22'W 118°21.5'W 118°21'W 118°20.5'W 118°20'W 118°19.5'W 118°19'W 118°18.5'W 118°18'W 118°17.5'W 118°17'W 118°16.5'W



**RAIL FIRE
OR-WWF-582
OPS Map
DIV Y / Z**

Date: North American 1983
08/05/2016
Day Shift

Approx: 7,119 ac
Perimeter as of 08/04/16 @ 1910



	Division Break		Structures
	Drop Point		Sensitive Feature (Point)
	Helispot		Sensitive Feature (Line)
	IR Isolated Heat Source		Power Line
	Lookout		Uncontrolled Fire Edge
	Retardant/Mud Pit		Completed Dozer Line
			R - R - Road as Completed Line

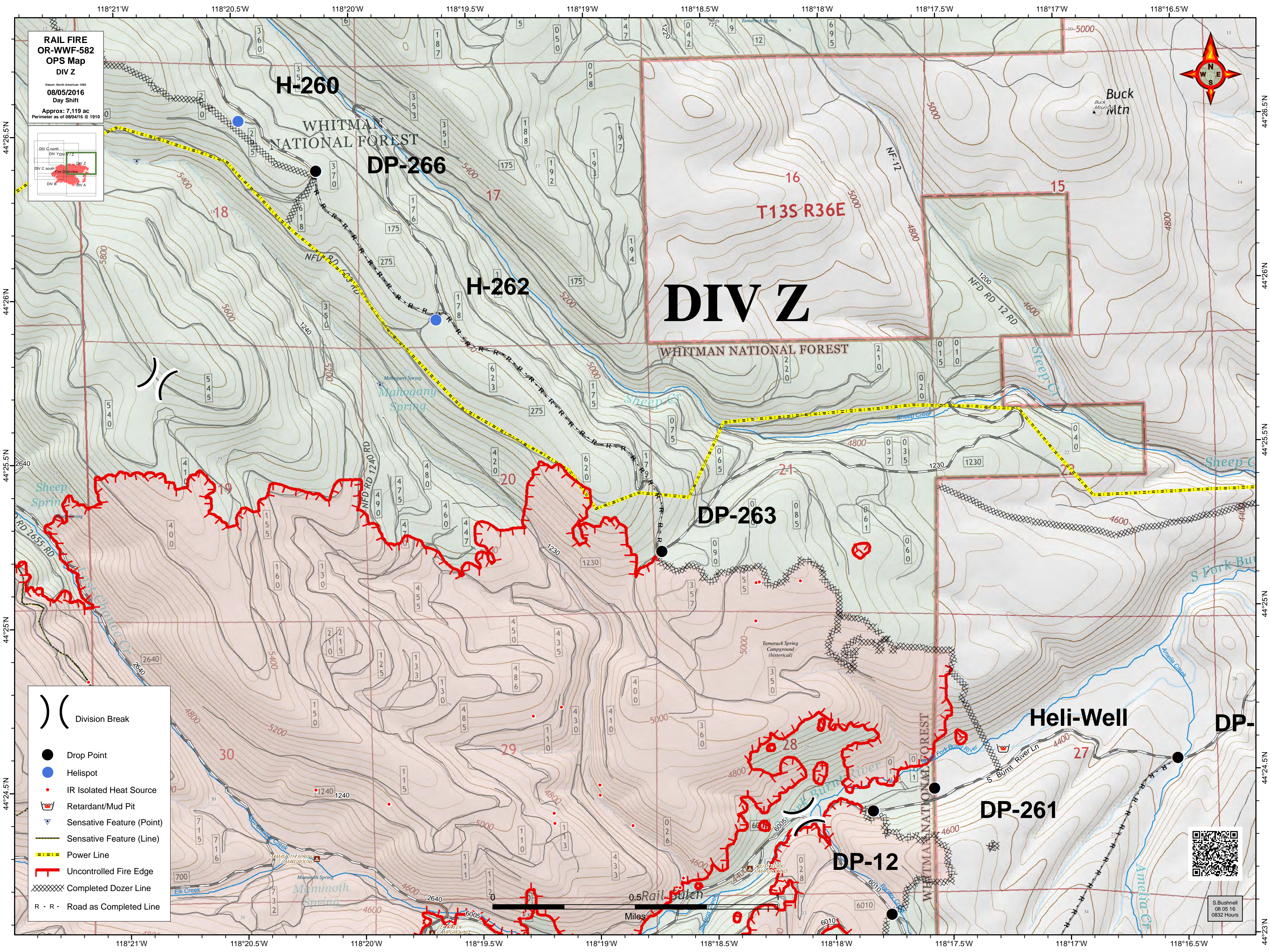


S. Bushnell
08 05 16
0832 Hours

**RAIL FIRE
OR-WWF-582
OPS Map
DIV Z**

Date: North American 1983
08/05/2016
 Day Shift

Approx: 7,119 ac
 Perimeter as of 08/04/16 @ 1910



) (Division Break

● Drop Point

● Helispot

● IR Isolated Heat Source

☑ Retardant/Mud Pit

▽ Sensitive Feature (Point)

— Sensitive Feature (Line)

— — — Power Line

— Uncontrolled Fire Edge

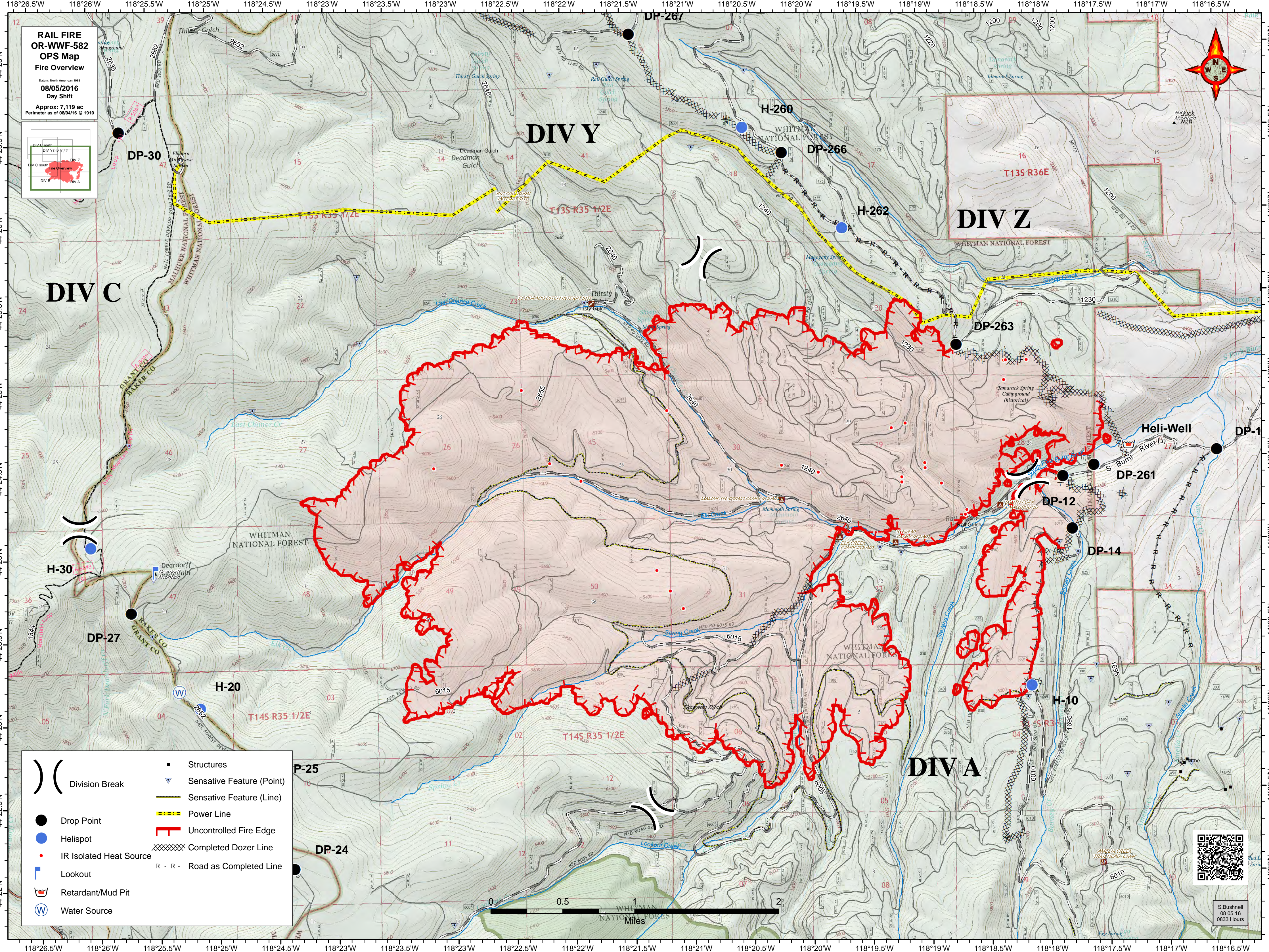
XXXXXX Completed Dozer Line

R - R - Road as Completed Line



S. Bushnell
 08/05/16
 0832 Hours

0.5 Miles



**RAIL FIRE
OR-WWF-582
OPS Map
Fire Overview**

Date: North American 1983
08/05/2016
 Day Shift

Approx: 7,119 ac
 Perimeter as of 08/04/16 @ 1910



	Division Break		Structures
	Sensitive Feature (Point)		Sensitive Feature (Line)
	Drop Point		Power Line
	Helispot		Uncontrolled Fire Edge
	IR Isolated Heat Source		Completed Dozer Line
	Lookout		R - R - Road as Completed Line
	Retardant/Mud Pit		
	Water Source		



S. Bushnell
 08 05 16
 0833 Hours