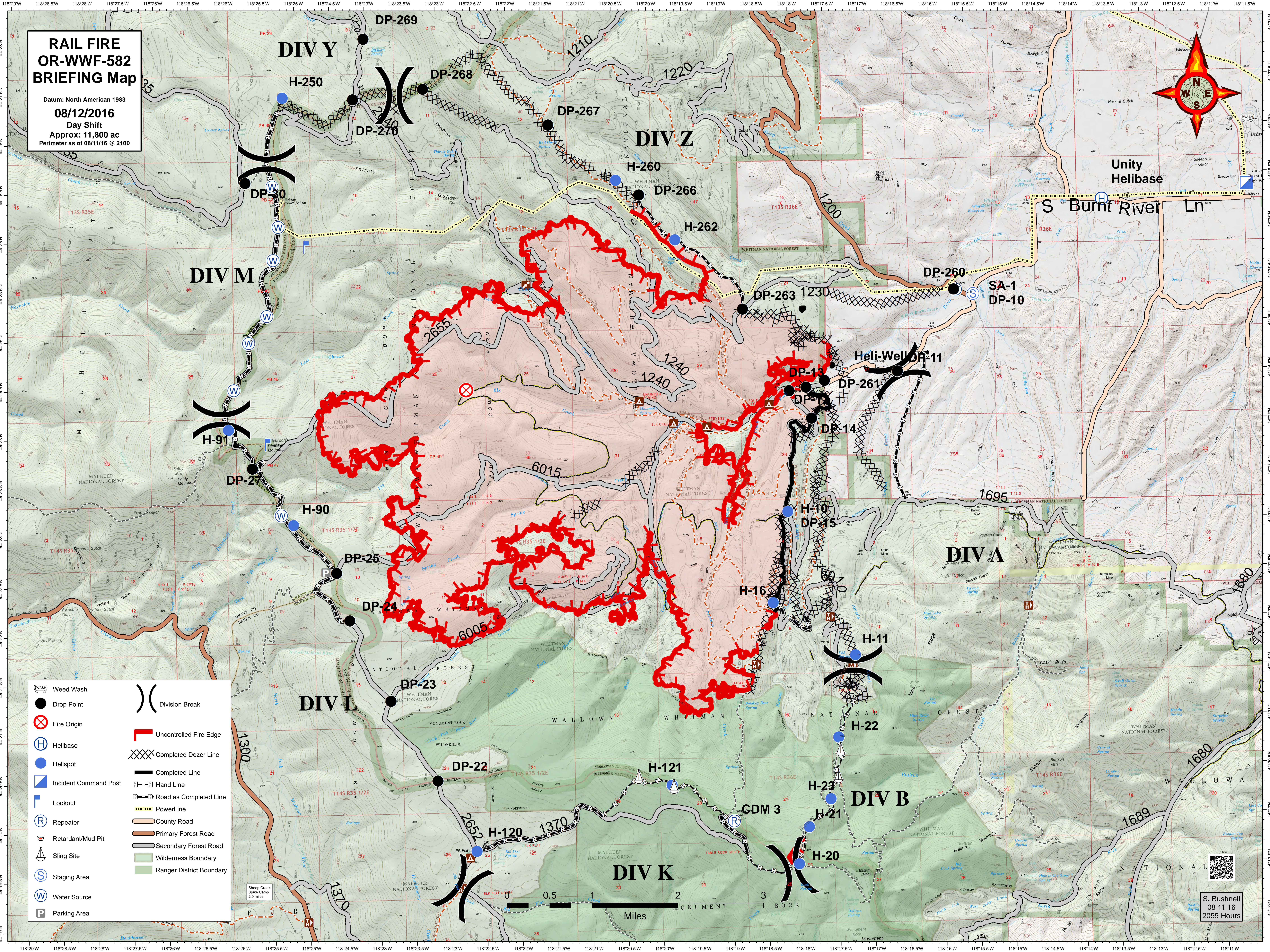


RAIL FIRE OR-WWF-582 BRIEFING Map

Datum: North American 1983
08/12/2016
 Day Shift
 Approx: 11,800 ac
 Perimeter as of 08/11/16 @ 2100



- | | | | |
|--|-----------------------|--|--------------------------|
| | Weed Wash | | Division Break |
| | Drop Point | | Uncontrolled Fire Edge |
| | Fire Origin | | Completed Dozer Line |
| | Helibase | | Completed Line |
| | Helispot | | Hand Line |
| | Incident Command Post | | Road as Completed Line |
| | Lookout | | PowerLine |
| | Repeater | | County Road |
| | Retardant/Mud Pit | | Primary Forest Road |
| | Sling Site | | Secondary Forest Road |
| | Staging Area | | Wilderness Boundary |
| | Water Source | | Ranger District Boundary |
| | Parking Area | | |



S. Bushnell
 08 11 16
 2055 Hours