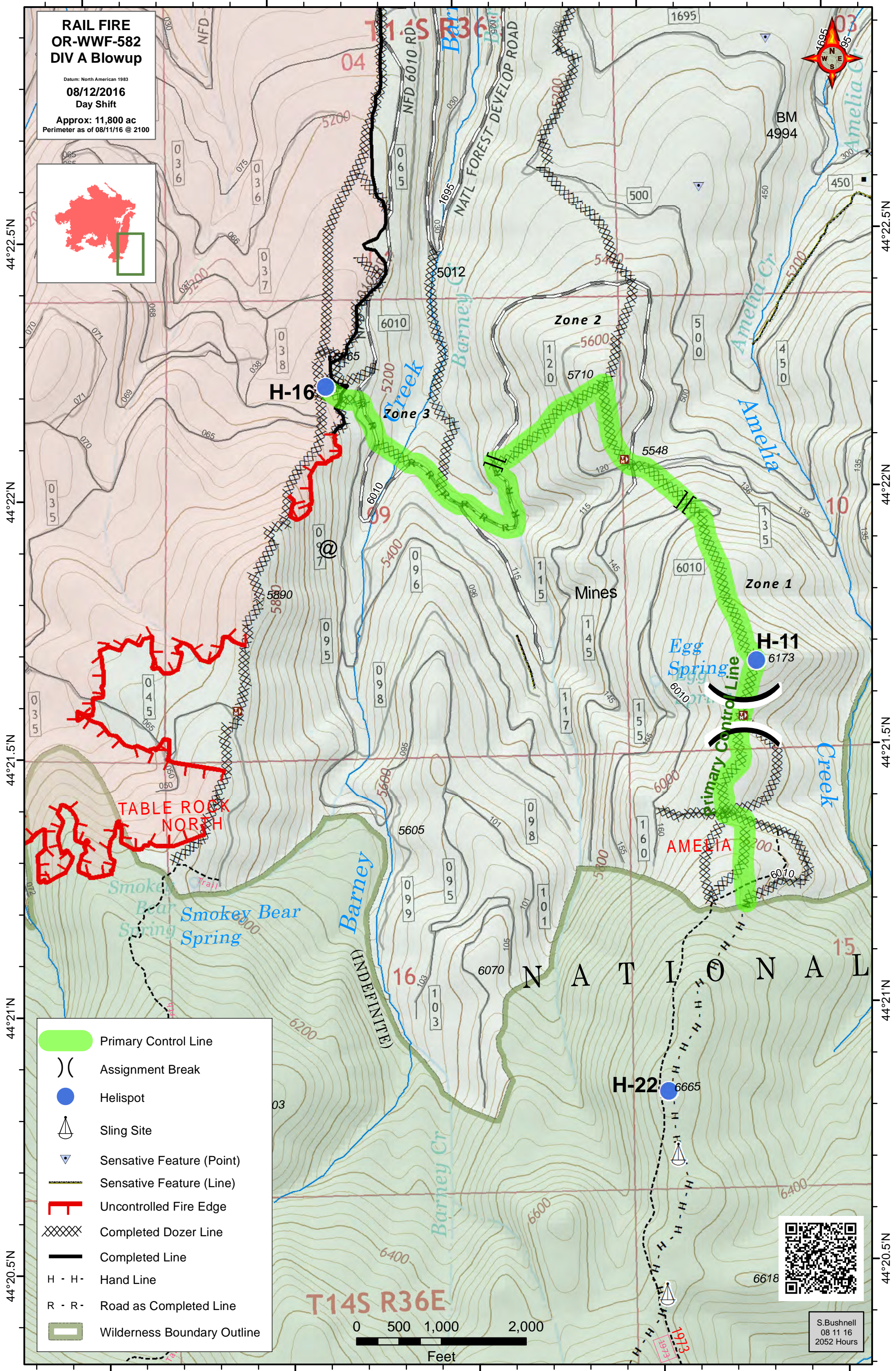
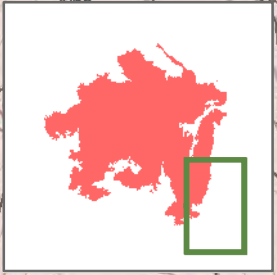


118°19'W 118°18.5'W 118°18'W 118°17.5'W 118°17'W

**RAIL FIRE  
OR-WWF-582  
DIV A Blowup**  
Datum: North American 1983  
**08/12/2016**  
Day Shift  
Approx: 11,800 ac  
Perimeter as of 08/11/16 @ 2100



44°22.5'N  
44°22'N  
44°21.5'N  
44°21'N  
44°20.5'N

44°22.5'N  
44°22'N  
44°21.5'N  
44°21'N  
44°20.5'N

- Primary Control Line
- Assignment Break
- Helispot
- Sling Site
- Sensitive Feature (Point)
- Sensitive Feature (Line)
- Uncontrolled Fire Edge
- Completed Dozer Line
- Completed Line
- Hand Line
- Road as Completed Line
- Wilderness Boundary Outline

0 500 1,000 2,000  
Feet



S. Bushnell  
08 11 16  
2052 Hours

118°19'W 118°18.5'W 118°18'W 118°17.5'W 118°17'W