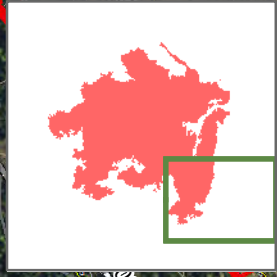


118°20'W 118°19.5'W 118°19'W 118°18.5'W 118°18'W 118°17.5'W 118°17'W 118°16.5'W 118°16'W

**RAIL FIRE
OR-WWF-582
DIV A Blowup**
Datum: North American 1983
08/12/2016
Day Shift
Approx: 11,800 ac
Perimeter as of 08/11/16 @ 2100



44°22.5'N
44°22'N
44°21.5'N
44°21'N

44°22.5'N
44°22'N
44°21.5'N
44°21'N

- | | | | |
|--|---------------------------|--|--------------------------------|
| | Division Break | | Uncontrolled Fire Edge |
| | Helispot | | Completed Dozer Line |
| | Sling Site | | Completed Line |
| | Structures | | H · H · Hand Line |
| | Sensitive Feature (Point) | | R · R · Road as Completed Line |
| | Sensitive Feature (Line) | | Primary Control Line |

118°20'W 118°19.5'W 118°19'W 118°18.5'W 118°18'W 118°17.5'W 118°17'W 118°16.5'W 118°16'W

S. Bushnell
08 11 16
2051 Hours

Source: Esri, DigitalGlobe, GeoEye, Earthstar Geographics, CNES/Airbus DS, USDA, USGS, AeroGRID, IGN, IGP, swisstopo, and the GIS User Community