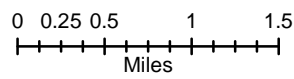


# RAIL FIRE OR-WWF-582 IAP Map

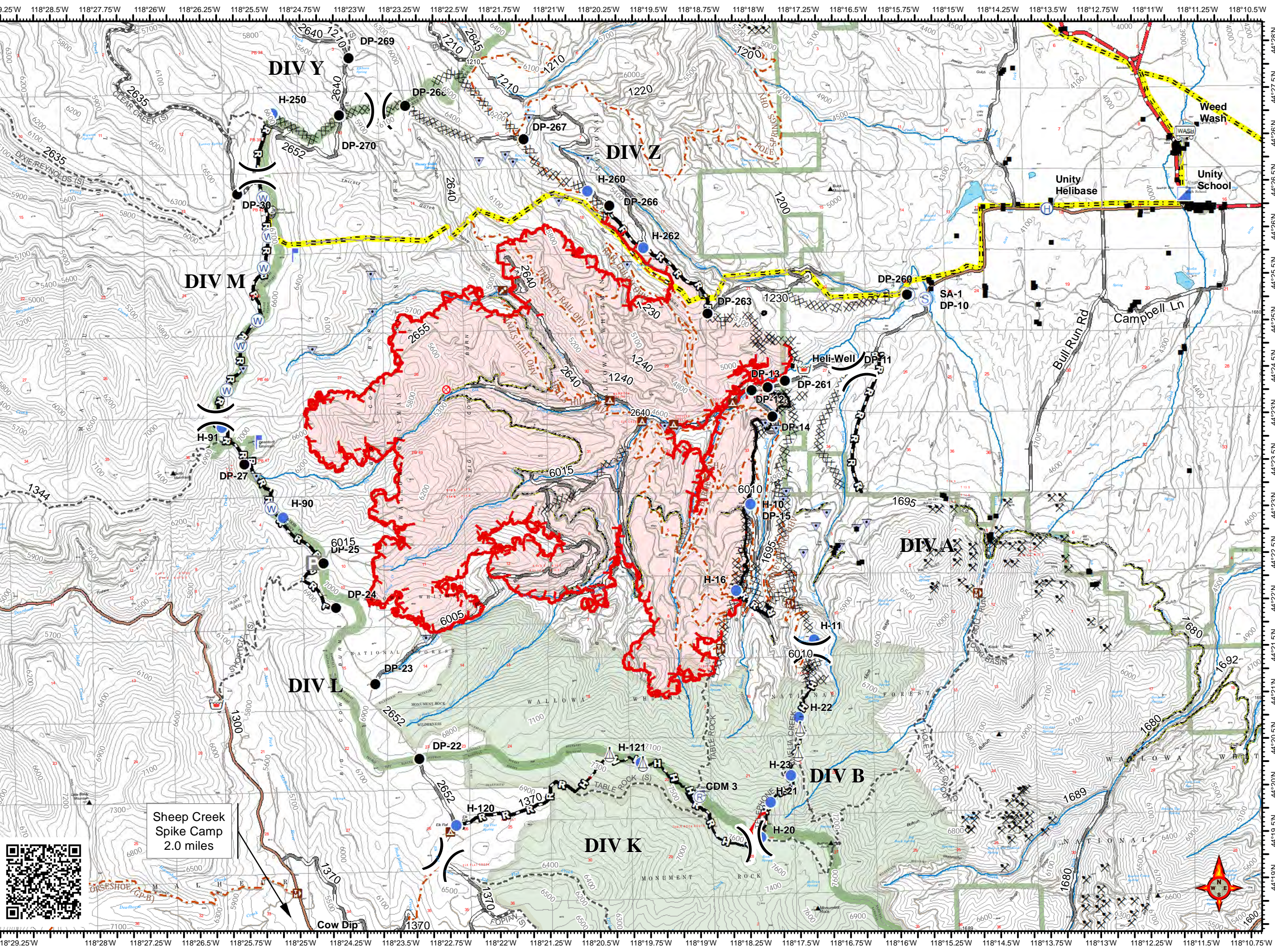
08/12/2016 Day Shift  
Perimeter as of: 08/11/2016 @ 2100  
Approx: 11,800 ac

- Division Break
- Drop Point
- Fire Origin
- Helibase
- Helispot
- Incident Command Post
- Weed Wash
- Lookout
- Repeater
- Retardant/Mud Pit
- Sling Site
- Staging Area
- Water Source
- Parking Area
- Lookout Tower
- Microwave Station
- Sensitive Feature (Point)
- Sensitive Feature (Line)
- Uncontrolled Fire Edge
- Completed Dozer Line
- Completed Line
- Hand Line
- Road as Completed Line
- Highways
- Paved Road
- Gravel Road
- Natural / Unknown Road
- Non-Motorized Trails
- Motorized / OHV Trails
- PowerLine
- Ranger District Boundary
- Wilderness Boundary

**WEATHER**  
Temp: 77  
RH: 20  
Wind: Var. 2-5 -> NW 4-8 -1400  
Haines: 3 very low



S. Bushnell  
08 11 16  
2053 Hours



Sheep Creek  
Spike Camp  
2.0 miles



Datum: North American 1983